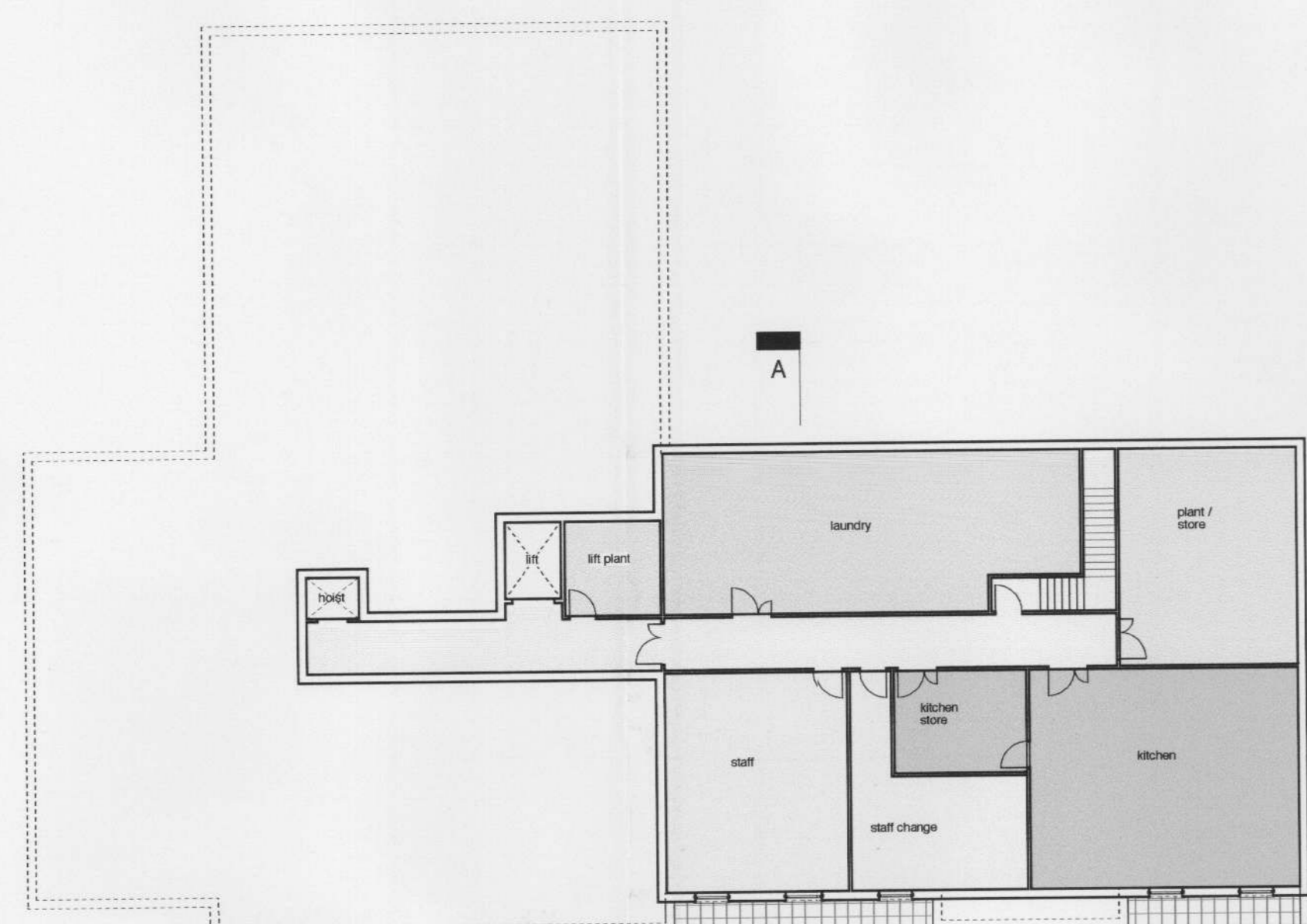
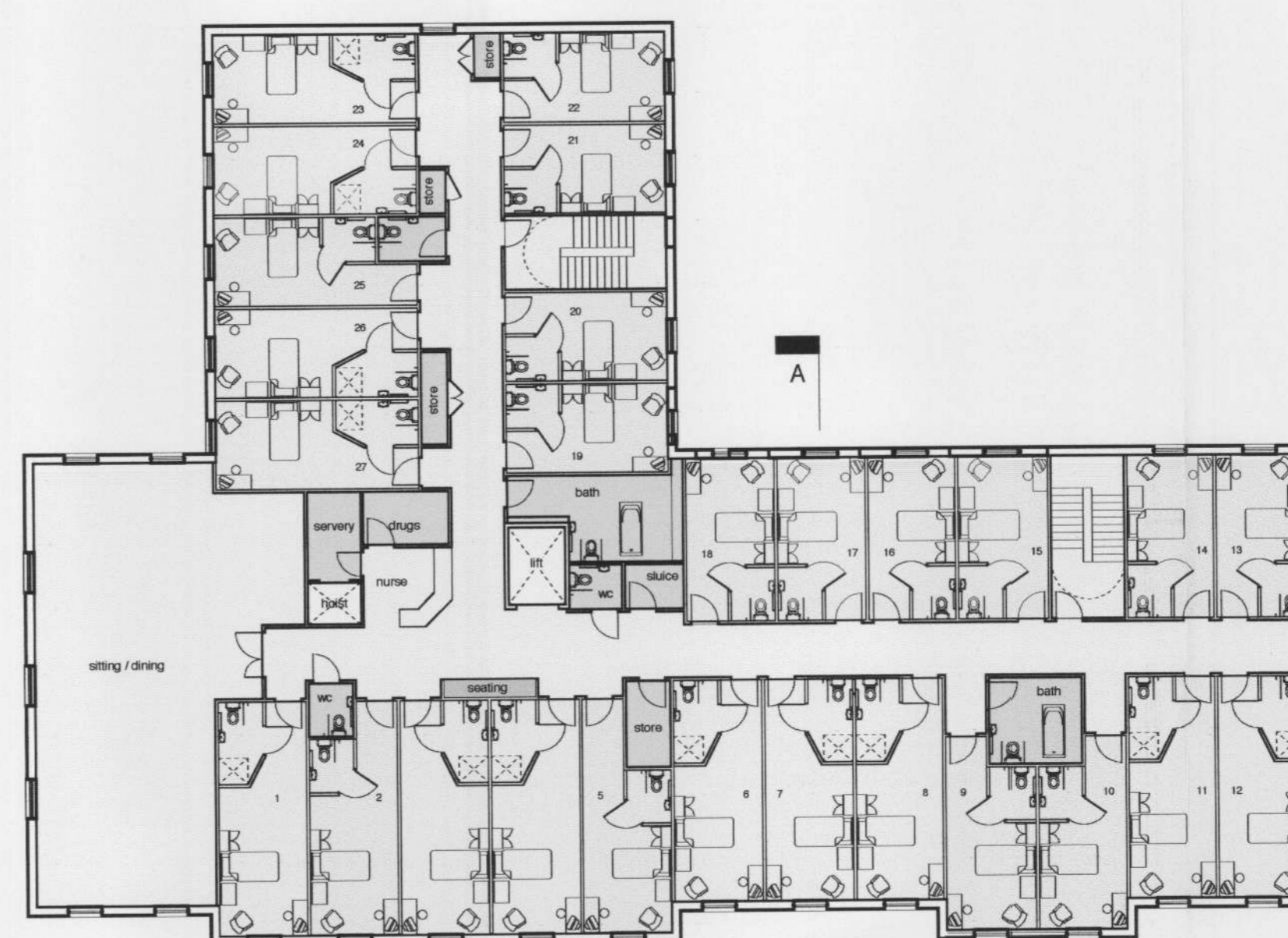


Notes: 1. Do not Scale  
2. Check all dimensions on site  
3. This drawing is copyright

06/0951/FUL



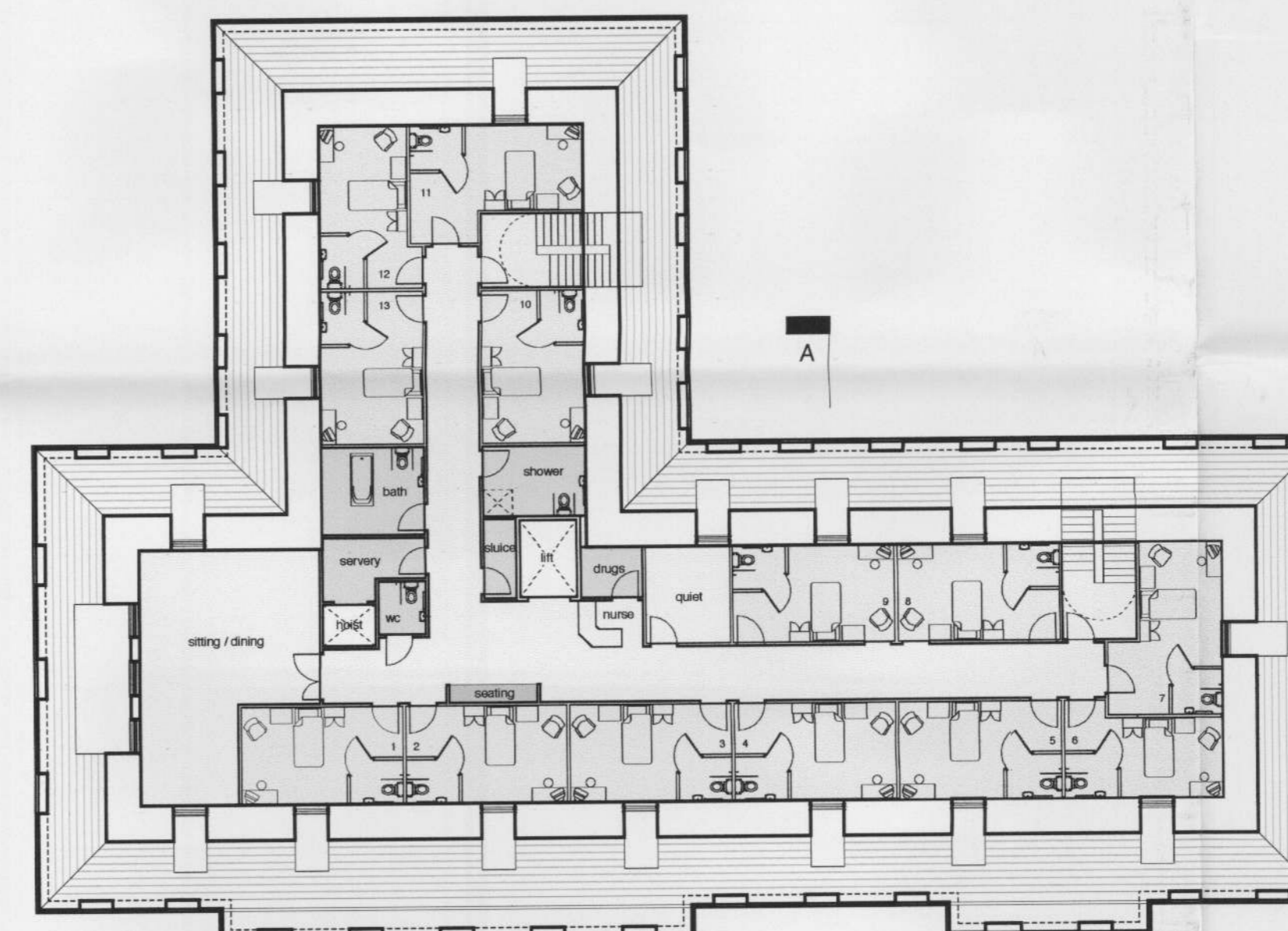
basement plan



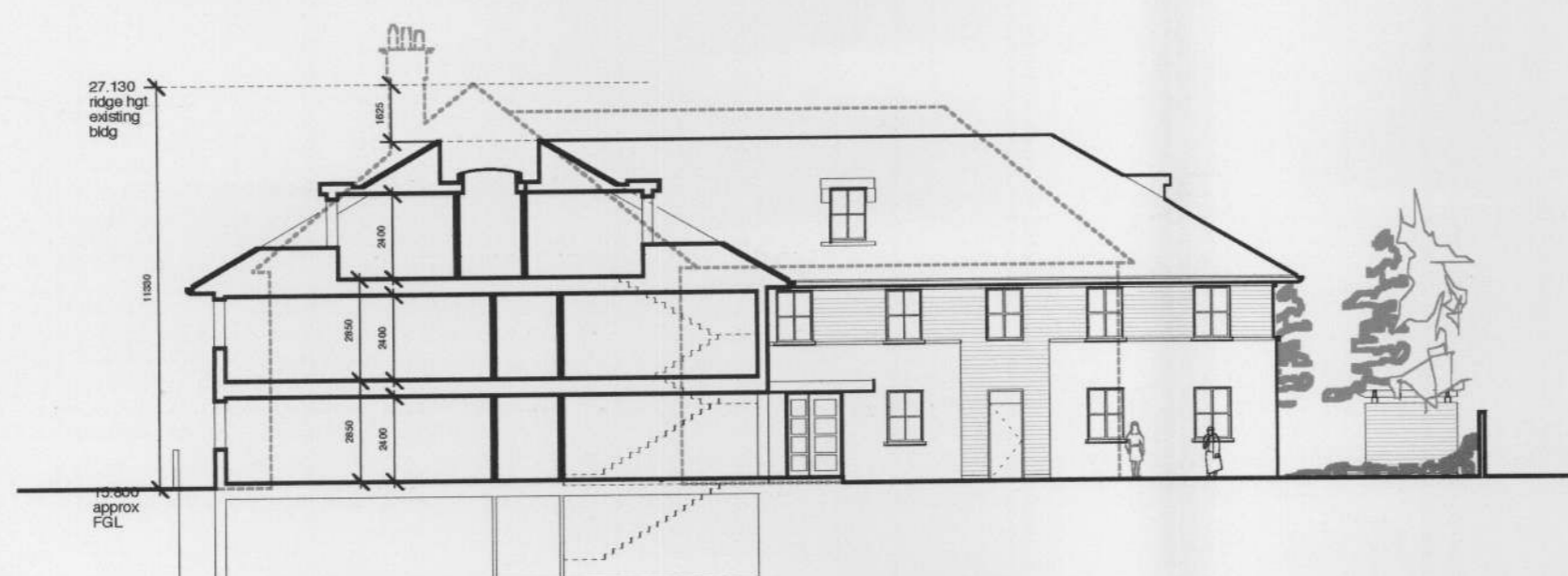
first floor plan



ground floor plan



roof level plan



section A-A

LONDON BOROUGH OF  
RICHMOND UPON THAMES  
10 MAY 2006  
PLANNING

B	8.5.06	GP	Minor revisions to window locations, windows added to corridor ends, stair between ground floor and basement re configured
A	29.3.06	GP	Holst shown
No	Date	By	Revision

Project  
St Mary's  
Hampton

Drawing  
Floor plans and section

Job Dwg No.  
927 203B  
Scale By Date drawn  
1:200@A1 GP 28.2.06

DunthorneParkerArchitects  
16 Hampden Gurney Street London W1H 5AL  
t 020 7258 0411 f 020 7723 1329  
www.dunthorneparker.co.uk  
mail@dunthorneparker.co.uk