

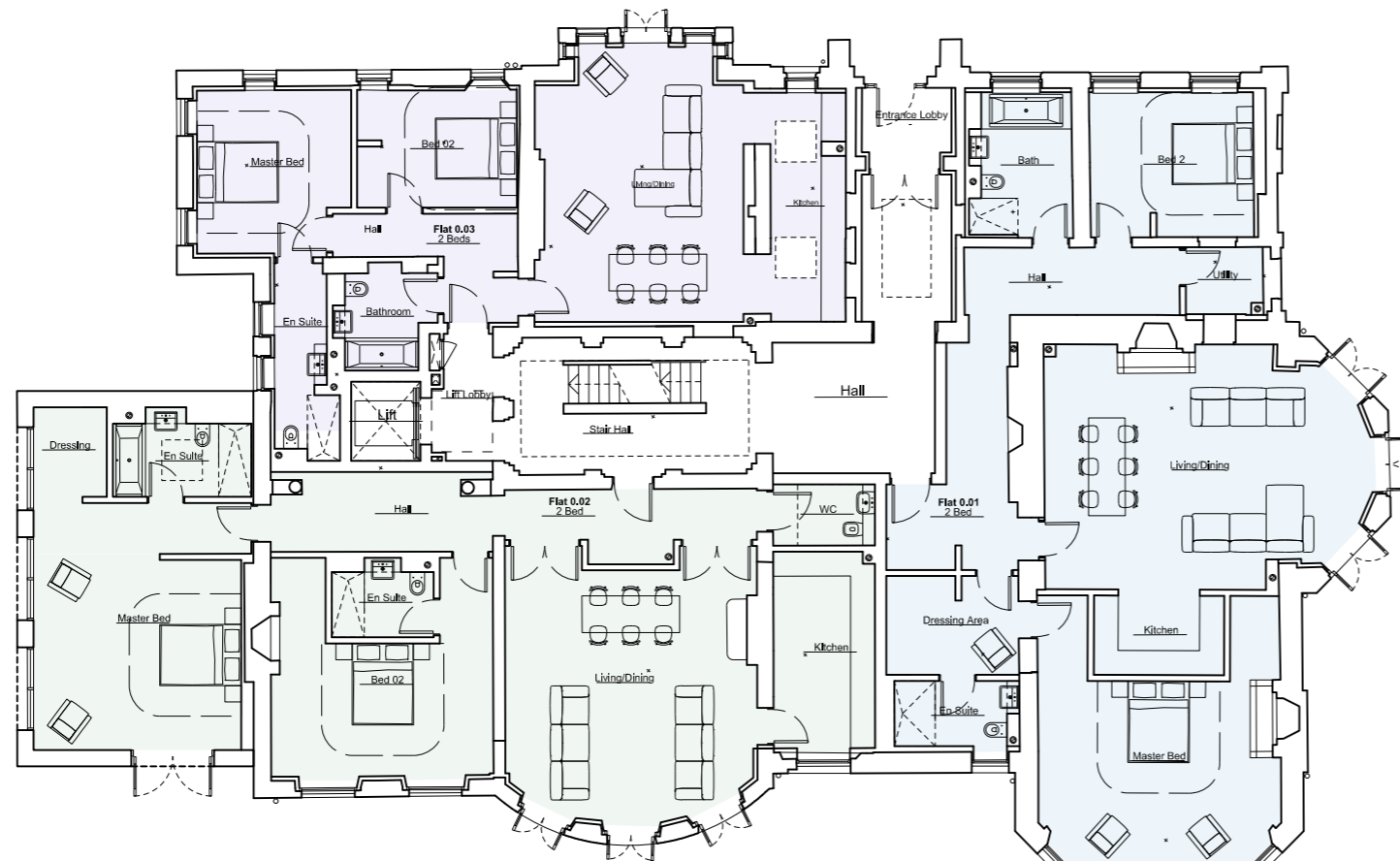
LATCHMERE HOUSE

Summary of Changes

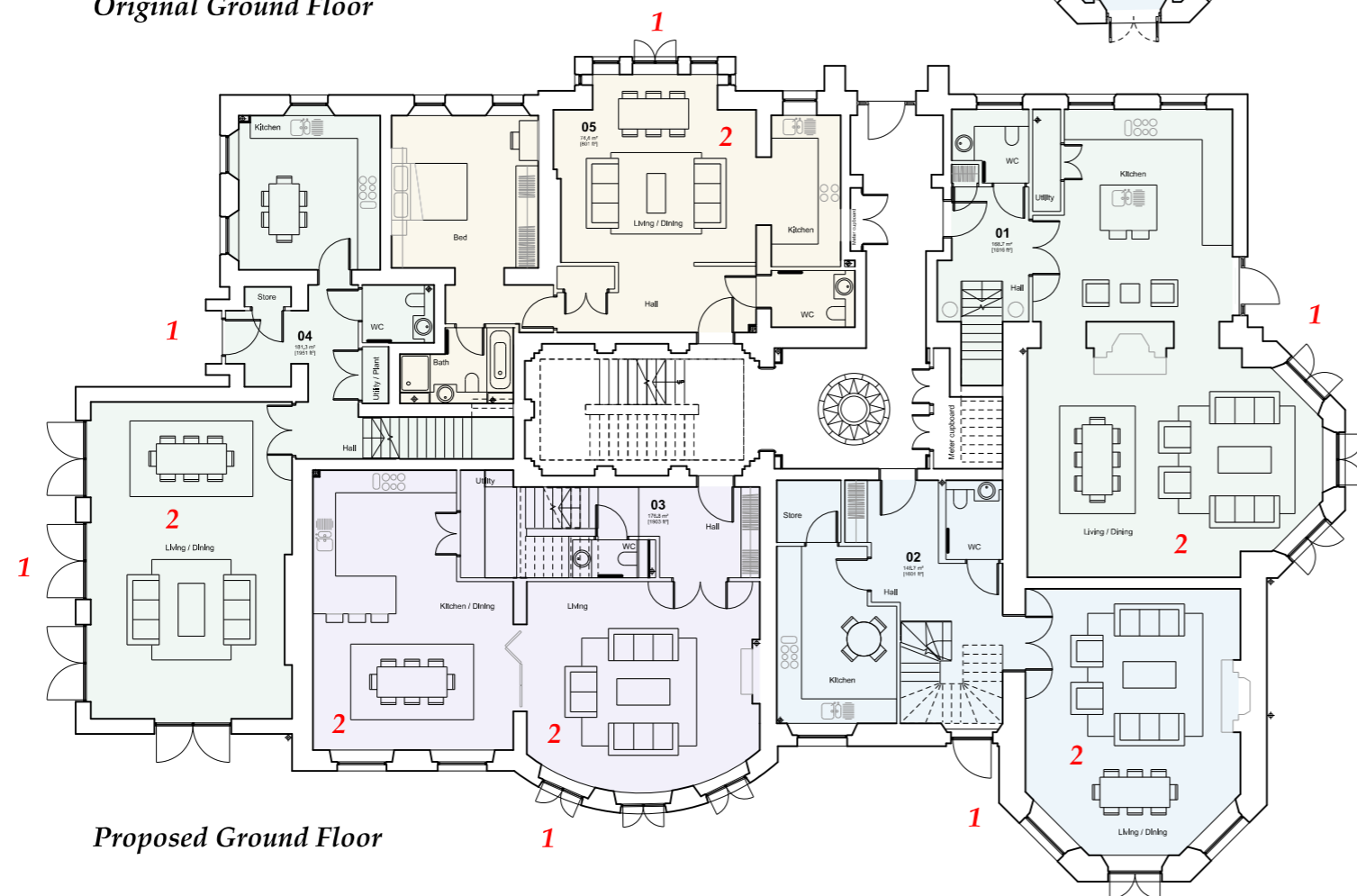
The intention of the revised design is to optimise the use of the large reception rooms on the Ground Floor.

The original application was for seven flats; three on the Ground Floor, two on the First Floor and two on the Second Floor. This revised design proposes to keep the two Second Floor flats but use the Ground and First Floor to provide 4 duplex apartments and one Ground Floor apartment. As a result;

1. Five of the apartments have a direct connection with ground level.
2. All the principal reception rooms can be used as living rooms and not bedrooms.
3. The lift is no longer necessary, as only the two second floor flats are accessed from above ground level. This results in less demolition and a more sympathetic treatment of the original fabric.
4. The only change to the external design from the original application is a new entrance door on the south west façade and a small variation in window arrangement on the same elevation.



Original Ground Floor

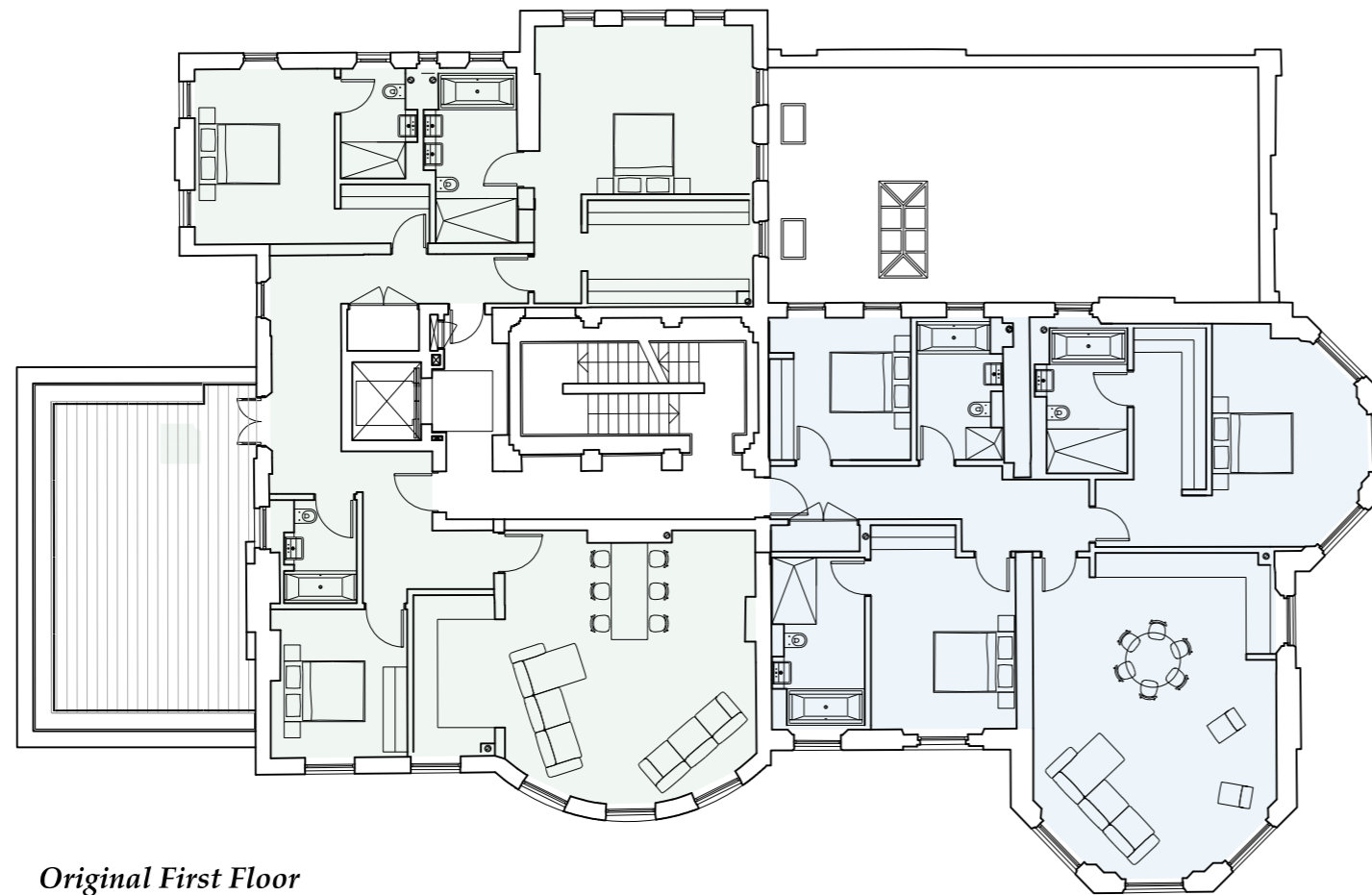


Proposed Ground Floor

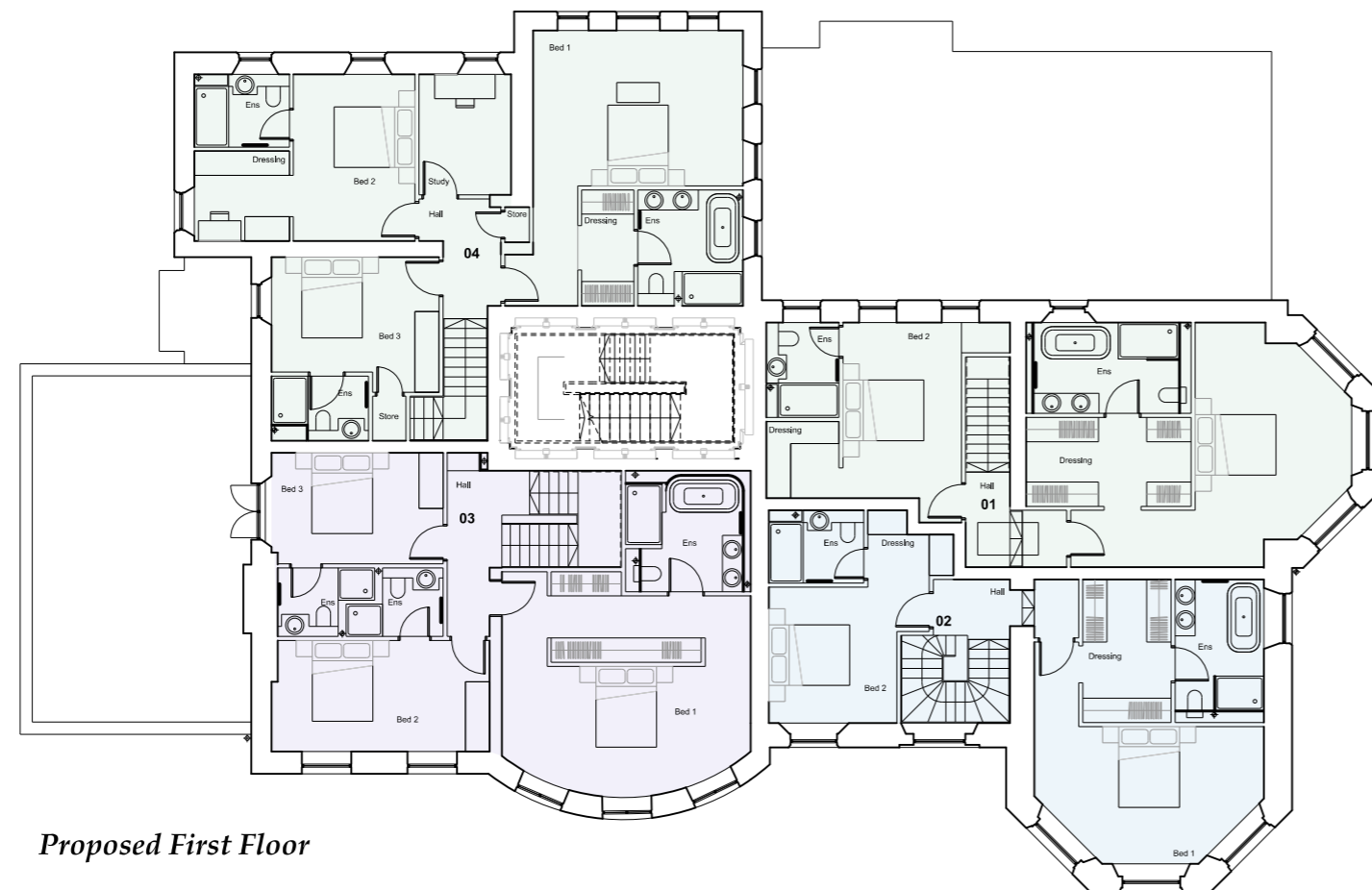
LATCHMERE HOUSE

First Floor Comparison

The duplex arrangement allows the First Floor rooms to be used as bedrooms instead of living rooms. Access to this floor from the common core is not required.



Original First Floor

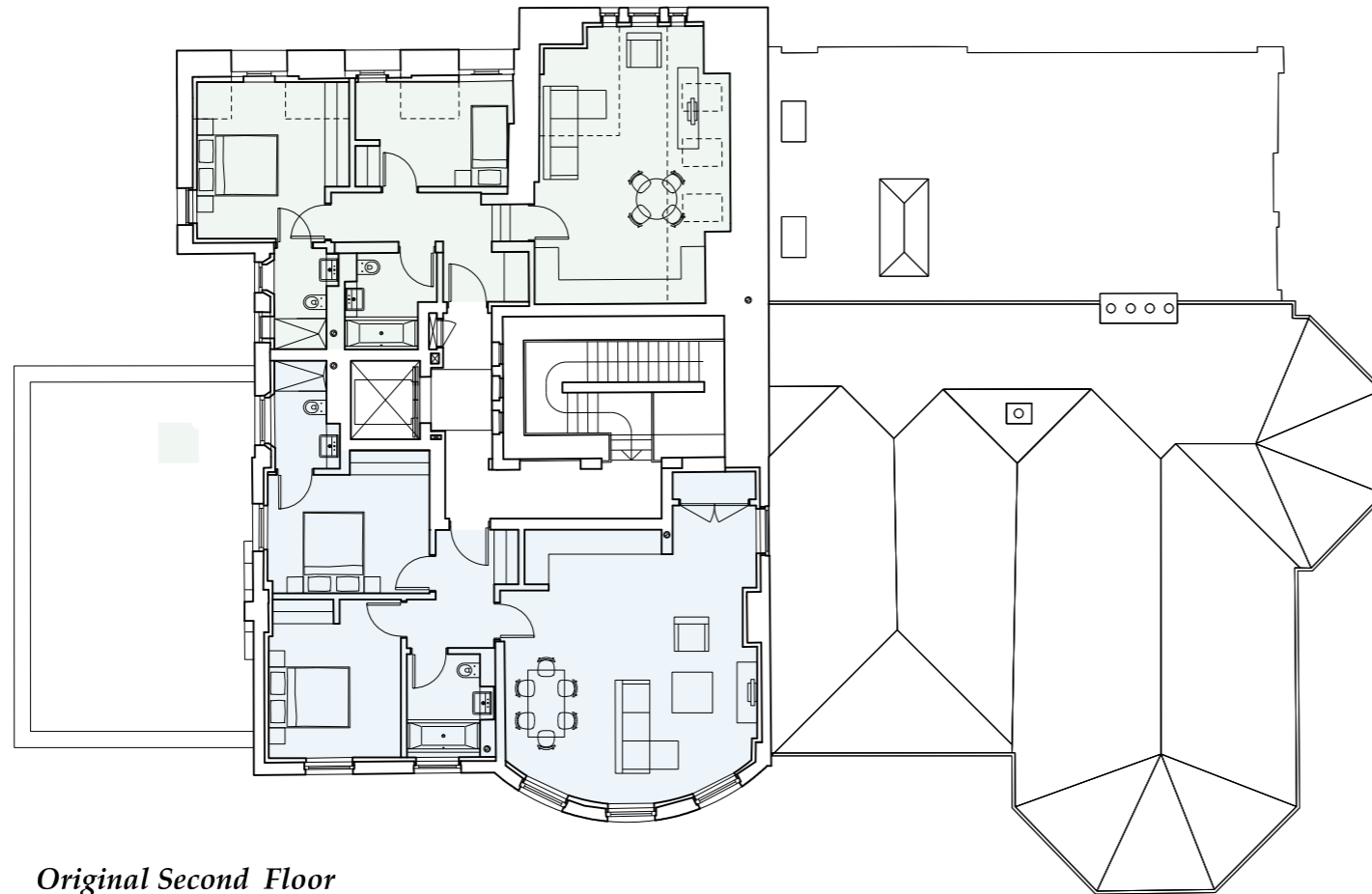


Proposed First Floor

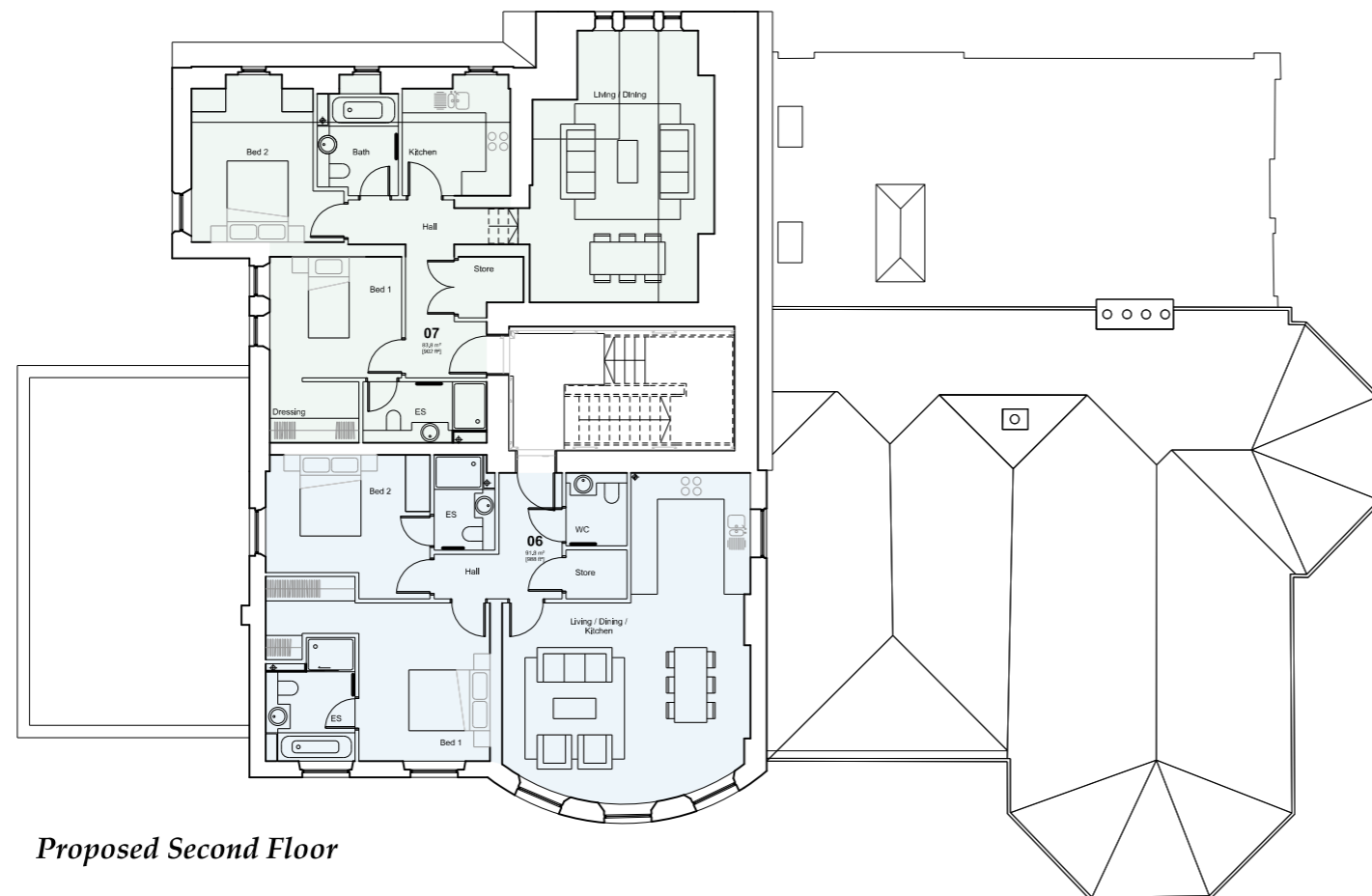
LATCHMERE HOUSE

Second Floor Comparison

Better use of the Second Floor can be made by avoiding a lift and the demolition and new structure it requires.



Original Second Floor



Proposed Second Floor