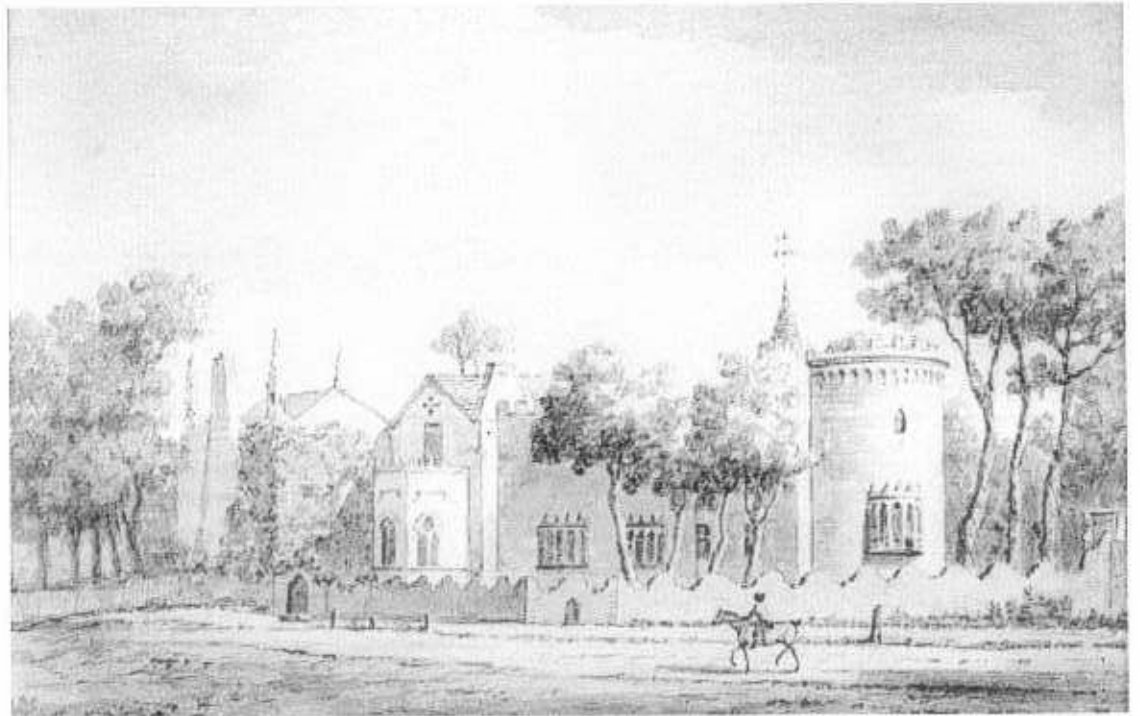
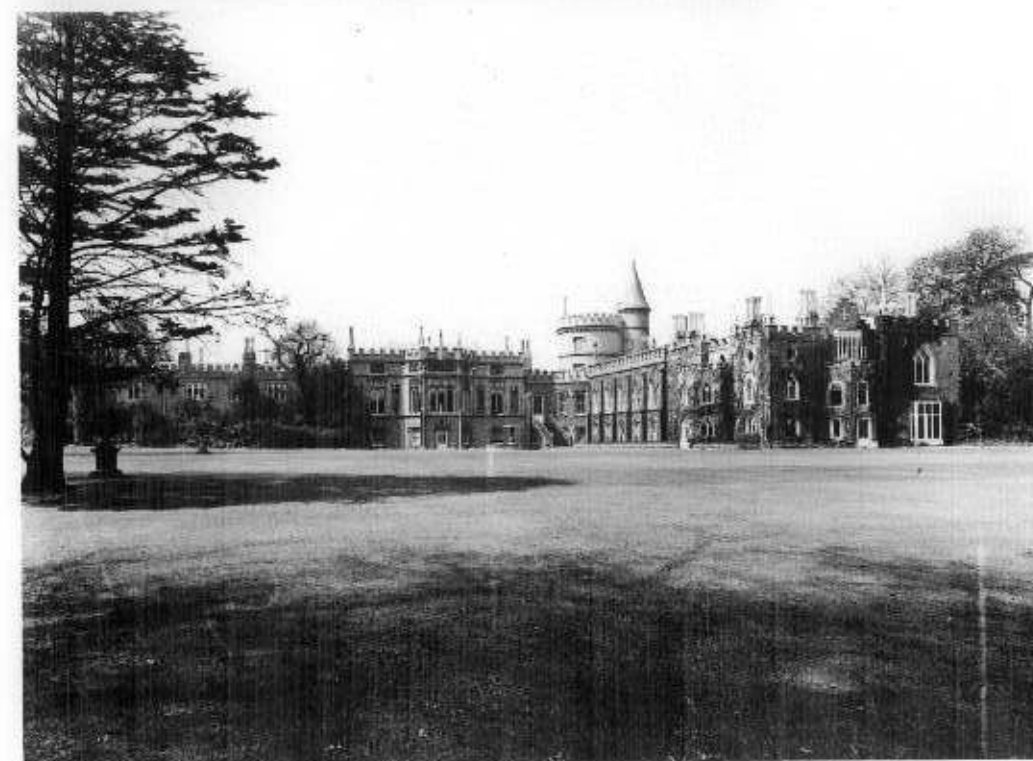
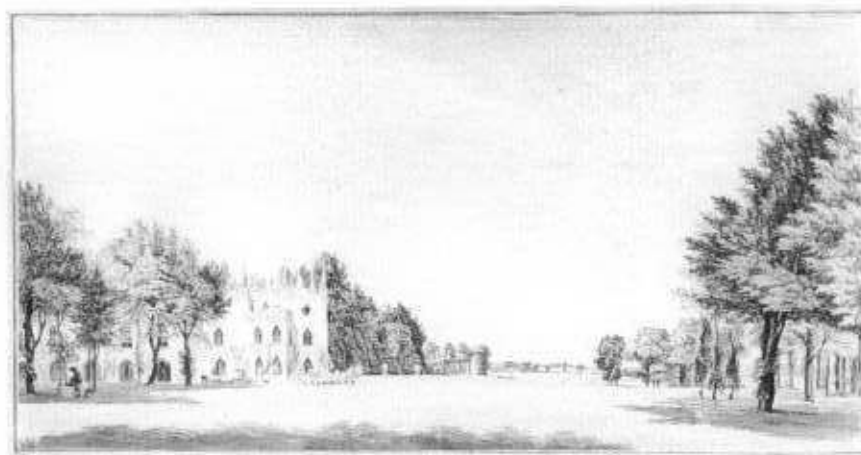
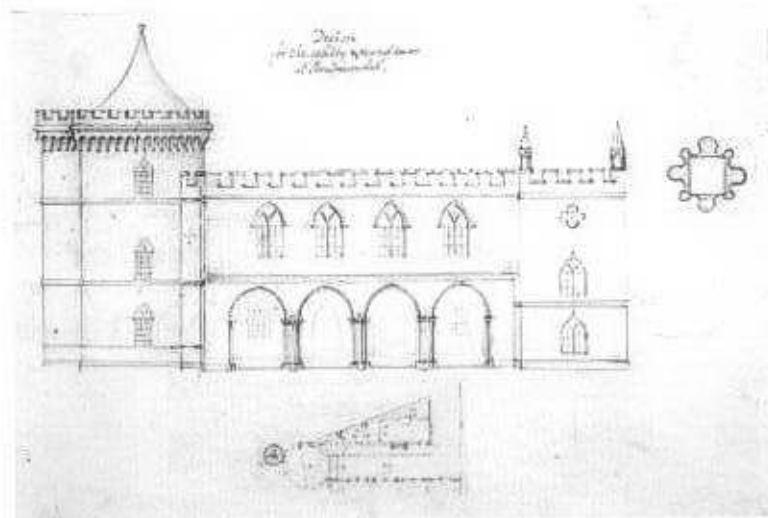


Principal floor plan
Description, 1784



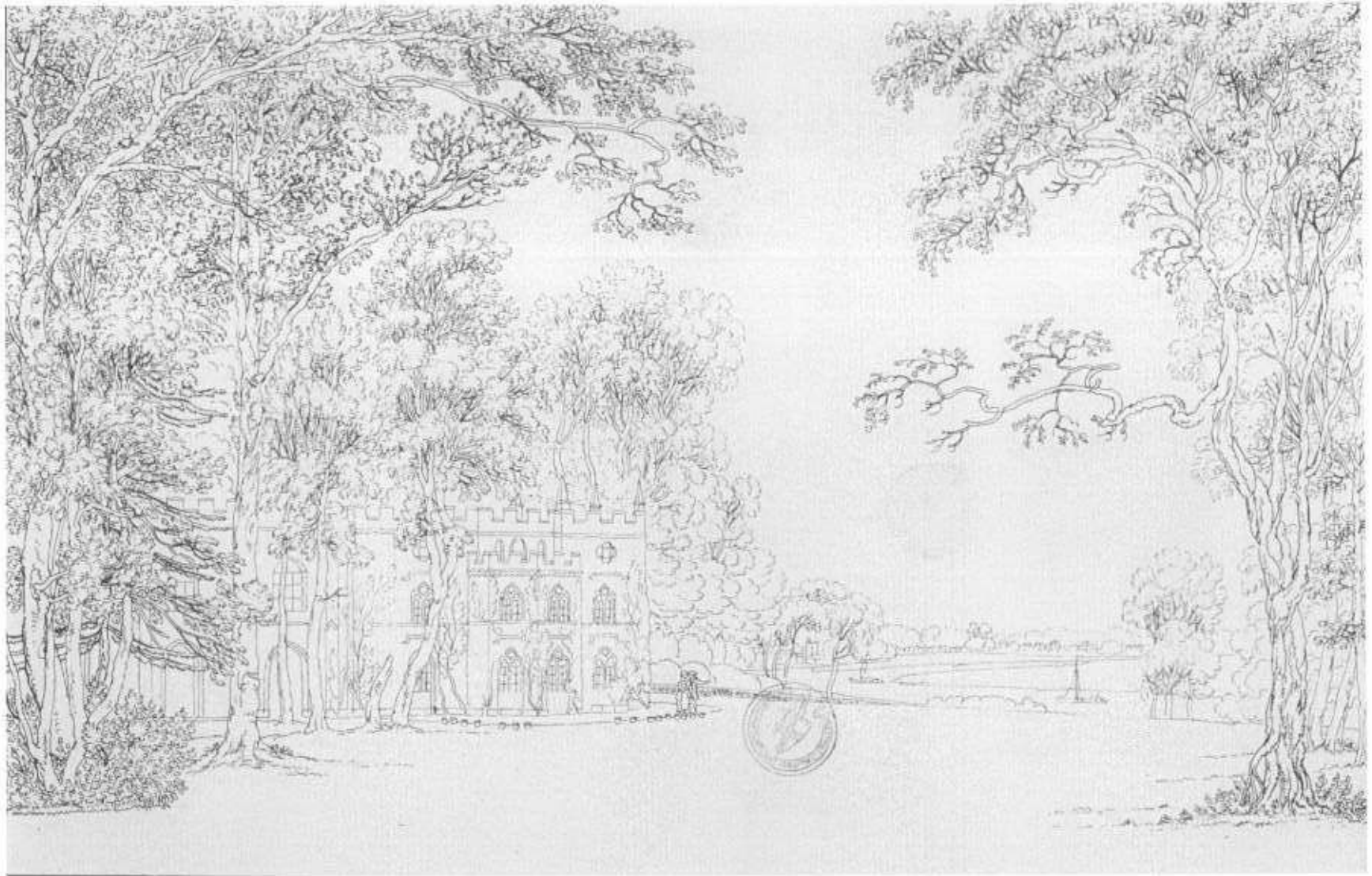
The North Front
late 18th Century



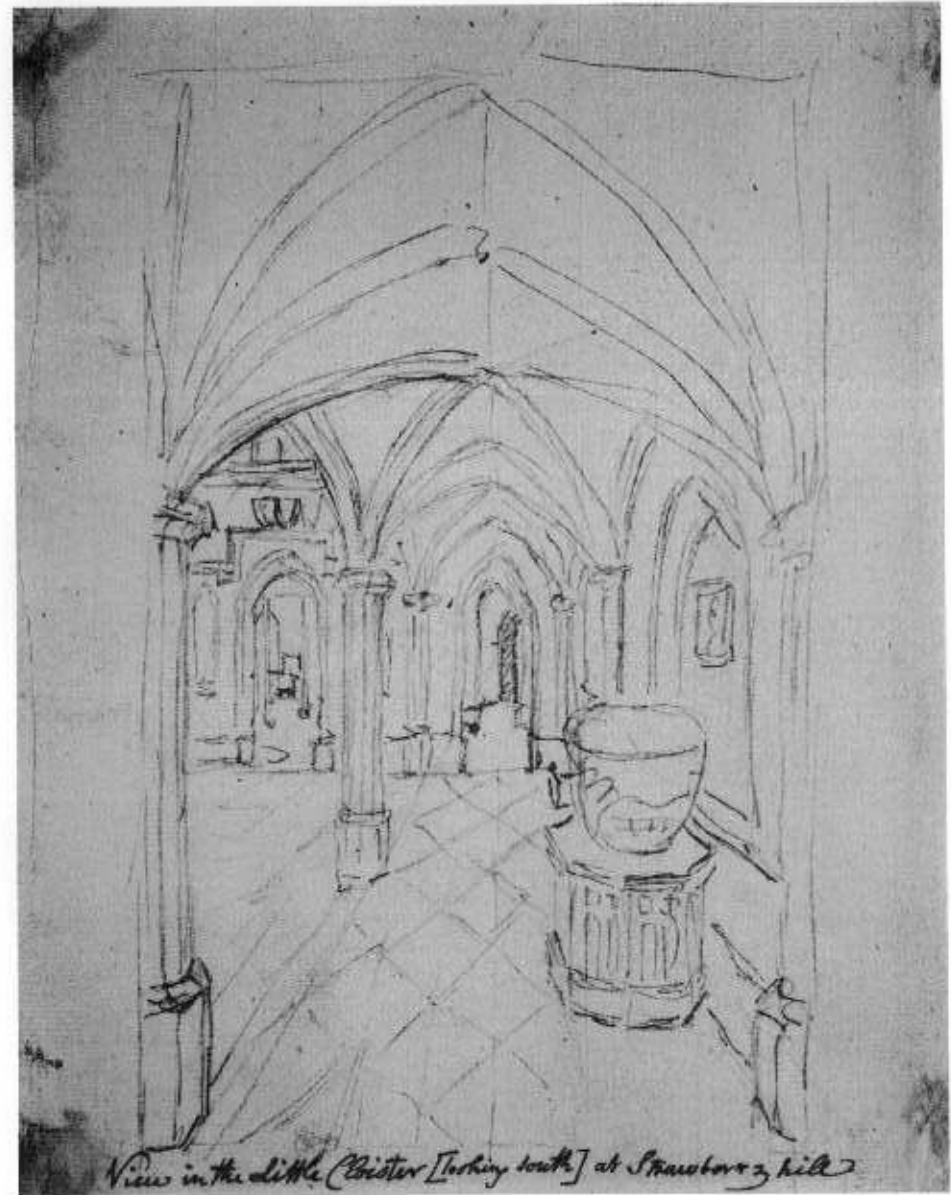


1 2
3 4

- The South Front
 1. Chute: Proposed Long Gallery, 1759
 2. Muntz: Strawberry Hill and the Thames 1756
 3. Sandby: South and East fronts 1783
 4. St Mary's College from the east 1927



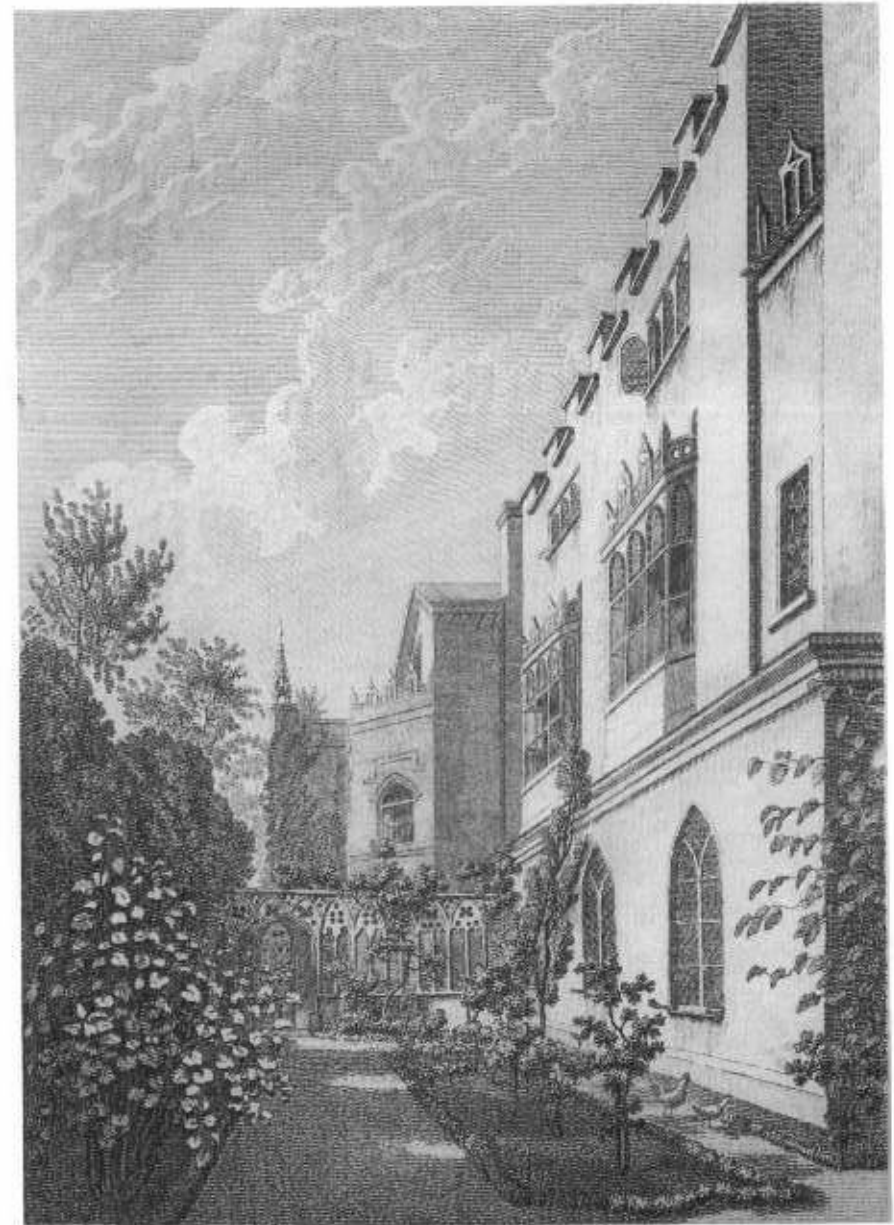
The South Elevation during the 1770's, the arches of the cloister open, forming a loggia linking the fine rooms above to the pleasure ground.



The Little Cloister by Carter (1780s) extended the gothic monastic feel. The door to the left leads to the hall. The door on the right, enters the Winding Cloister set with medieval alabasters and Muntz's mock-medieval memorial brass. Its planned irregular plan is linked to the Great Cloister with the Prior's Garden



John Carter, 1780s
The North entrance court, marked with a further screen to the west
leading onto the prior's garden.



The Prior's or Abbots Garden in the early 1780s filling the narrow slip of land between the North elevation and the road to Hampton. The leaded lights and the units of independent building were used by Walpole to evoke the image of an ancient castle which evolved over time.



North-West
Country Life, 1922