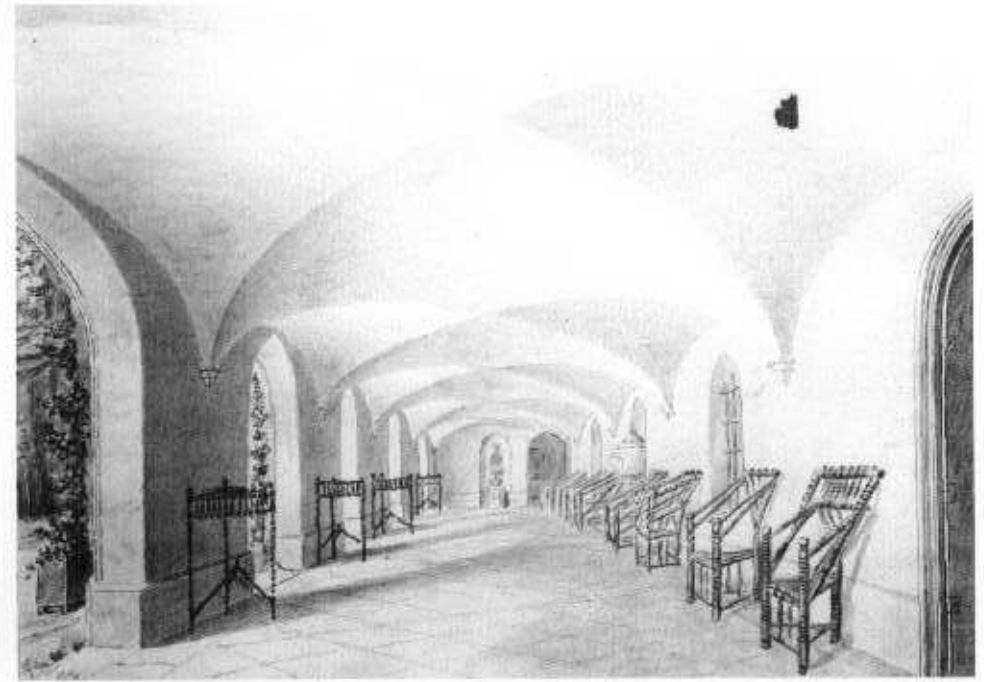
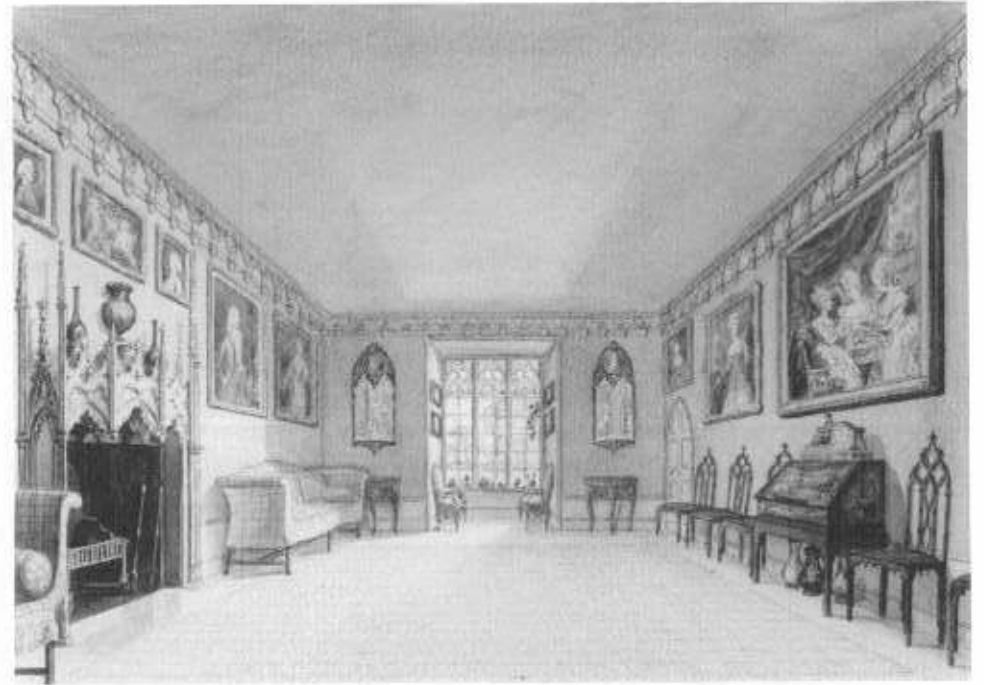




The Entrance Hall
John Carter, 1780s

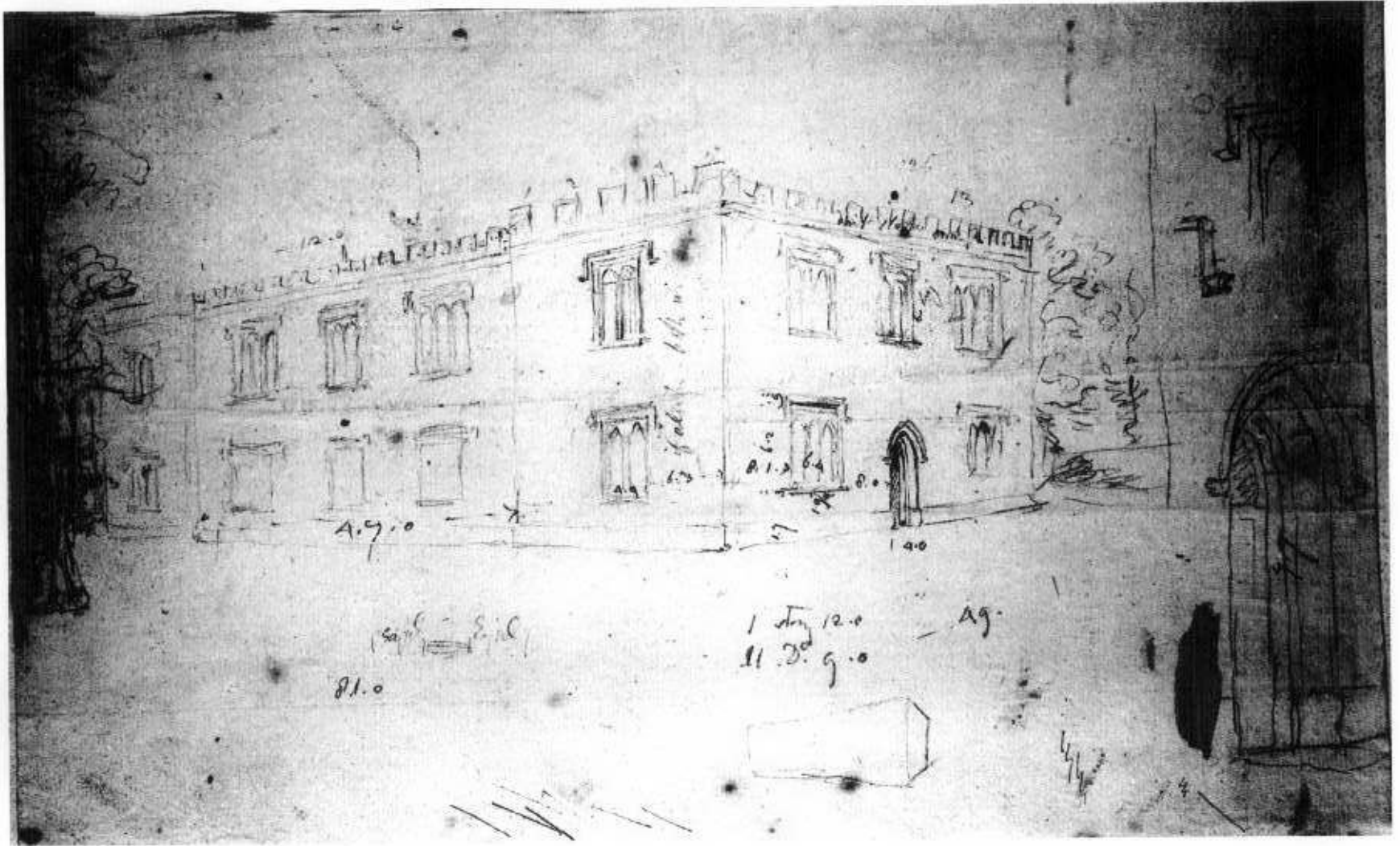


1 2
3 4

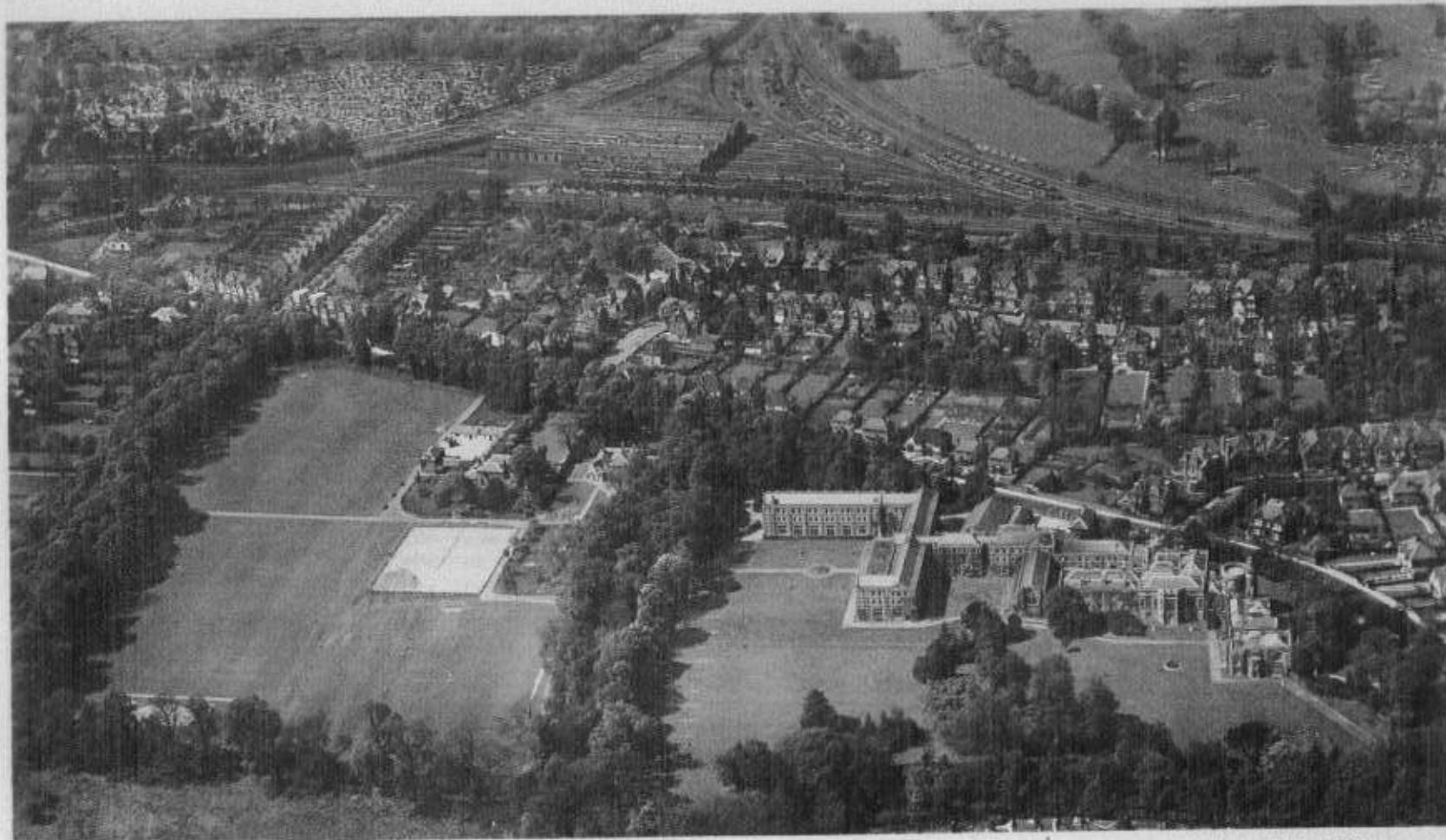
1. Refectory, 2. Carter: Refectory 1788, 3. Cloister, 4. Carter: Cloister 1788



The only known image of the front gates to Lady Waldegrave's carriage sweep. The gates reflect the other elements of the improvements carried out during the early 1860s.



Walpole's 'New Offices' a free standing structure with leaded lights now linked to the Villa by Lady Waldegrave's pavilion



COPYRIGHT
E 4890

ST. MARY'S TRAINING COLLEGE,
STRAWBERRY HILL, MIDDLESEX.

THE AERIAL
PHOTOGRAPHIC CO.
LONDON