

Strawberry Hill Trust

06 / 1626 / LBC

STRAWBERRY HILL HOUSE  
Restoration of Walpole's Villa  
as a heritage site

ANALYSIS OF FABRIC  
May 2006

Vol 1 - Ground Floor

Peter Inskip + Peter Jenkins Architects  
Ltd  
19-23 White Lion Street, London N1 9PD  
T: 020 7833 4002 F: 020 7278 5343  
E: [ijarch@inskip-jenkins.co.uk](mailto:ijarch@inskip-jenkins.co.uk)

I give myself a Burlington-air, and say, that as Chiswick is a model of  
Grecian architecture, Strawberry Hill is to be so of Gothic.  
Horace Walpole to Mann

The lower part of the castle was hollowed into several intricate cloisters; and it was not easy for one under so much anxiety to find the door that opened into the cavern. An awful silence reigned throughout those subterraneous regions, except now and then some blasts of wind that shook the doors she had passed, and which, grating on the rusty hinges, were re-echoed through that long labyrinth of darkness. Every murmur struck her with new terror; yet more she dreaded to hear the wrathful voice of Manfred urging his domestics to pursue her.

***The Castle of Otranto***

## Abbreviations, Symbols and Typology

Accounts Paget Toynbee. <i>Strawberry Hill Accounts a Record o Expenditure In Building furniture, &amp;c.</i> (1927 Oxford).		my most worthy & honourable friend the honourable Mr. Horace Walpole'. British Library Add Mss 5841 ff 76-84		579.a.30, [also 579.b.37., RB.23.a.24124]	
AER	Sir Albert E Richardson (1880 -	CRONIN	Thirty-Four Years at Strawberry Hill - The Very Reverend Kevin Cronin C.M., C.B.E., M.A. From Strawberry Hill Archive	HEWETT	Osbert Wyndham HEWETT (ed.) '...and Mr. Fortescue' <i>A Selection from the Diaries from 1851 to 1862 of Chichester Fortescue, Lord Carlingford, K.P.</i> (London: John Murray, 1958)
AH	<i>Architectural History</i>				
AJ	<i>Architect's Journal</i> 8 May 1997 p 11	D 1774	Horace WALPOLE. <i>A Description of the Villa of Mr Horace Walpole at Strawberry Hill</i> (Strawberry Hill Press: 1774).	HW	Horace Walpole (1717-1797), later Earl of Orford.
BICENTENARY	<i>Bicentenary of Strawberry Hill</i> - A Reprint of the Proceedings at St. Mary's College on May 16 <sup>th</sup> , 1947.	D 1784	Horace WALPOLE. <i>A Description of the Villa of Mr Horace Walpole at Strawberry Hill</i> (Strawberry Hill Press: 1784).	GB	<i>Craftsmen</i> Geoffrey BEARD. <i>Craftsmen and Interior Decoration in England 1660 - 1820</i> (London: Bloomsbury, 1980).
BAILLIE	Thomas & CO. <i>A concise Account of some of the Ecclesiastic and Domestic painted &amp; Stained Glass Windows, Memorial Brasses, &amp;c., That have been designed, executed, and fixed up, Principally in Great Britain and Ireland, by Thomas Baillie &amp; Co., (1875</i>	ENTWISLE	'Eighteenth-Century London Paperstainers: Thomas Bromwich at the Golden Lyon on Ludgate Hill'.	GUILLERY	Peter GUILLERY. 'STRAWBERRY HILL: BUILDING AND SITE - Part One: The Building' <i>Architectural History</i> 38: 1995.
CARLINGFORD	Carlingford manuscript Diaries British Library Add Ms 63721 followed by vol number.	EH NMR	Photographs held by English Heritage and the National Monument Record.	Kenney Interview	Interview with Peter Rose 23 January 1996 with Antony Kenney
CABINET	'Our Museum' <i>The Cabinet Maker and Art Furnisher</i> , 1 September 1883.	EVANS	John Evans. An Excursion to Windsor, in July 1810, through Battersea, Putney, Kew, Richmond, Twickenham, Strawberry Hill, and Hampton Court with historical and biographical anecdotes, for the improvement of the rising generation, with an account of his Majesty's last Walks on the Terrace of Windsor castle, &c.. London, printed for Sherwood, Neely and Jones, 1817 (BL 10350.aa.23).	LEAR	Lady STRACHEY (ed.) <i>Later Letters of Edward Lear, Author of "The Book of Nonsense" to Chichester Fortescue (Lord Carlingford), Frances Countess of Waldegrave and others.</i> (London: T Fisher Unwin, 1911)
CARROLL	Kathleen Carroll. <i>Lady Frances Waldegrave Political Hostess at Strawberry Hill 1856 - 1879</i> (Borough of Twickenham Local Hisotry Society Paper number 77: 1998).			LEAR II	Lady STRACHEY (ed.) <i>Letters of Edward Lear Author of the Book of Nonsense to Chichester Fortescue Lord Carlingford and Frances Countess of Waldegrave</i> (London: T Fisher Unwin, 1907).
CL	Country Life Photographic archive.	EVANSII	John Evans LL.D., <i>of Islington Richmond, and its Vicinity. With a glance at Twickenham, Strawberry Hill, and Hampton Court etc.</i> (Richmond: printed for James Darnill, etc., 1824) pp. xiv, [2], 279; [3] plates. Illus. (12o); 15cm. BL	MS	Michael Snodin
COLE 1762	'vol. 40 of my manuscript collections' ff. 78-84 (original sequence 153-165' Sequence from ff 76 begins 'Being on a visit for 2 or 3 days to			NEVILL	Ralph NEVILL (ed.) <i>The Reminiscences of</i>

	Lady Dorothy Nevill (London: Edward Arnold, 1906) BL 10827 h 26.
PYE	Henrietta PYE. <i>A Short View of the Principal Seats and Gardens in and about Twickenham</i> (London, 1767 (BL 10351d1).
OWH	Osbert Wyndham Hewett. 'The Waldegrave Strawberry Hill' <i>Architectural Review</i> vol 122 no 728 Sept 1957 pp 157 - 161.
RIBA	Royal Institute of British Architects Drawings Archive (at the V&A) Richardson & Houffe drawing for alterations carried out by the builders Dove Brothers (1960 - 64) at St Mary's college. Works to Strawberry Hill House appear to have been carried out 1960 - 62.
RL	Richmond Local Studies Library
SALE	Strawberry Hill, The Reneowned Seat of Horace Walpole. Mr George Robins 25 April 1842, for 23 days. Copy at the London Library consulted.
Simmarian	The Simmarian Newsletter - no. 33 March 1963
PG	Peter Guilery
VENTOM	Ventom, Bull and Cooper. <i>The Strawberry Hill Estate</i> (BL Maps 30.c.3).

## SYMBOLS

Shorthand symbols used to modify dates in the chronological analysis:

>	After an indicated year
≥	from
<	before
≤	before or up to
~	about three years either-side an indicated date
1 / 2	first half of the century
2 / 2	second half of the century
1 / 4	first quarter
C18	eighteenth century

Room numbering is expressed with three variables, beginning with a letter defining floor level, then a numeral which indicates compartment - 1 for Walpole's Villa; 2 for the Waldegrave Pavillion; and 3 to indicate New Office. The final numeral indicates room within the specified compartment.

G/1/11 indicates Ground floor room in the Walpole Villa numbered 11.

G	ground floor
F	first floor
S	second floor
A	attics (third floor)

1	Walpole's Villa
2	Waldegrave Pavillion
3	New Offices

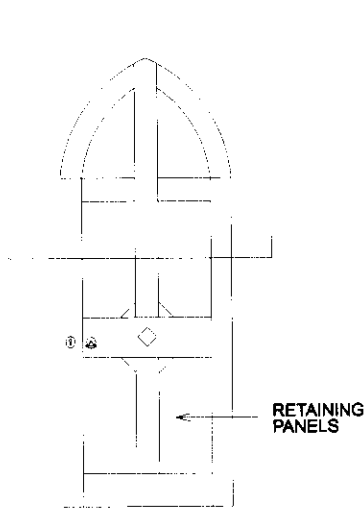
Other abbreviations used on the drawings and in the analysis of fabric used to identify elements. The annotation

D	door
W	window
RL	roof light

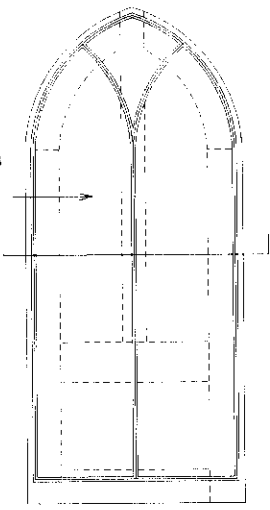
N	niche
S	shutter
C	chimney

## **TPOLOGY**

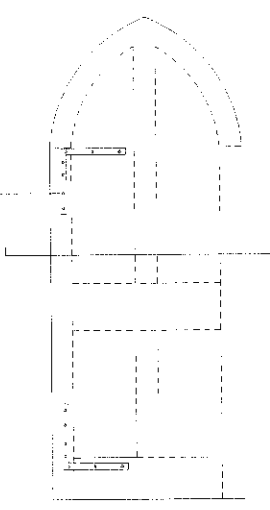
Elevation



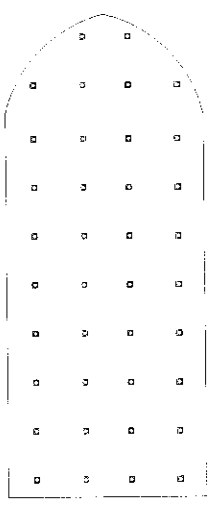
FRAMES, PANELS  
AND HINGES  
ALIGNED FLUSH



FRAMES, PANELS  
AND HINGES  
ALIGNED FLUSH



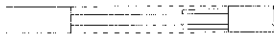
Back



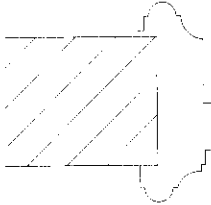
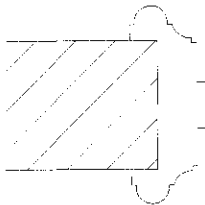
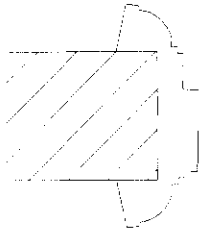
Front

Doors

Section  
Part  
Enlargement



Plan  
Enlargement



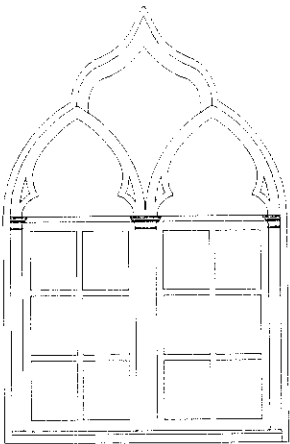
Architraves

Type 1

Type 2

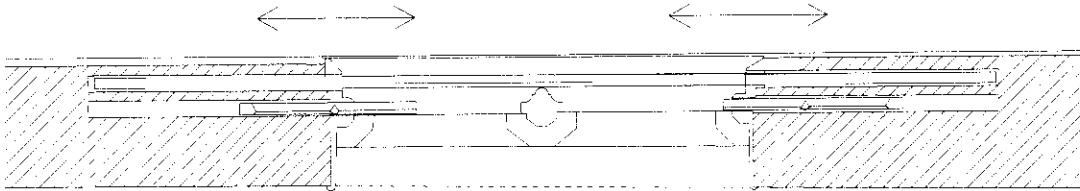
Type 3

Elevation



Windows

Section  
Part  
Enlargement



Windows and Shutters operation

Type 1



<b>Oratory</b>	<b>G/1/1</b>
1762	Oratory
1784	a small oratory
1810	Oratory
1861	[disappears - incorporated into Lady Waldegrave's new Vestibule]
1958	Recovered by AER

*Entering by the great north gate, the first object that presents itself is a small oratory inclosed with iron rails; in front, an altar, on which stands a saint in bronze; open niches, and stone basons for holy water; designed by John Chute, esq; of the Vine in Hampshire. On the right hand is a small garden called the abbot's garden, parted off by an open screen, taken from the tomb of Roger Niger bishop of London in old St. Paul's.*

Description 84 P 2

The Oratory, built to John Chute's design, followed the construction of the bow window to the Holbein Chamber when Walpole acquired the narrow strip of land between the Pantry G/1/3 and C18 road to Hampton.

Three of Chute's drawings are known and thought to date from 1761. The south elevation of the wall was divided into five bays, filled with tracery and above, a cornice which was a reduction of that in the Great Parlour and first used by James Gibbs at Wroxton. About twenty years after completion the space is recorded in a series of three watercolour views by Carter which show the disposition of the ornament, the detail of the floor and the relationship with the little cloister. Carter's views show the space as represented in Chute's designs except the access door linking to the little cloister. Intriguingly, Carter shows a full-length door, much as Chute represents but the present arrangement has a high threshold. The C18 arrangement of the forecourt had the entrance gate directly opposite the central aperture, with its view of the early renaissance bronze figure, sold in 1842 and now in the V&A, which would have heightened the sense of entering a monastic cloister.

During the mid C19 improvements and extension of the house the space was dramatically altered. A new vestibule was built over the forecourt and extended over the part of the oratory. The little loggia of the oratory was enclosed and linked with a new door to the Pantry (G/1/3) and became a link passage from the domestic offices to the new front door, the present entrance gate at the carriage sweep wall. Through the 1861-62 addition, much of the decorative elements of plasterwork survived on the south wall and on the embrasures of W 1 and W 2. The 1958 - 59 restoration by Sir Albert Richardson (AER) removed Lady Waldegrave's Vestibule and recovered and restored the Oratory, Little Cloister, Hall and the related elevations.

ITEM	HISTORICAL DETAIL	WORKS
<b>CEILING</b> Plain plaster	1984 ≤1762 May completed prior to May, 1861 -3 Assimilated into new Vestibule. Ceiling un effected; 1958 - 60 AER revealed oratory restoration of Hall 1984 John Warren renews ceilings and floors	
<b>CORNICE</b> A miniature version of Gt Parlour cornice run mouldings with cast or modelled supporting Gothic brackets. To perimeter of room.	1761/2	
<b>WALLS</b> All other walls plain plaster on [masonry] core. A trapezoid in plan, the north wall canted east and west with the central bay pierced, enclosed by a grill; the side bays pierced and remaining open.  South: plaster on [brick] core; render is worked with ornament. Divided into five vertical bays with repeating tracery, the first bay filled by a door (ornament lost with original door), the central bay with a niche and projecting hood and bracket. Below, the low level wainscot divided into panels ornamented with raised quartrefoils.  North Brick / masonry core, plain plaster	1761/2 design by John Chute suggests a highly ornamented wall, blind low-projecting Gothic tracery in five bays flanking central bay with niche and projecting plinth; although space is engulfed in 1861 - 3 detail of niche seems to survive; 178? Carter's shows an element of projecting ornament  1761/2  [1771] building of prior's garden aspect changed 1842 Bronze statue of 'a saint' lost, not bought-in at the sale. 1861 - 3 East canted corner enclosed I by new Vestibule. 1958-60 AER plan suggests opening was transformed to a narrow door,	
<b>SKIRTING</b> Plain high skirting. Plaster or cement	1762  1780s View by John Carter shows a plain [stone] or [render] skirting with square top edge forming the plinth.	
<b>FLOOR</b> Stone pavement, irregular slabs.	1958	

ITEM	HISTORICAL DETAIL	WORKS
<p><b>WINDOW OPENINGS</b>  Three lancet arch-shaped openings, unglazed. The embrasures with applied raised repetitive lozenge-shaped panels. All painted Brilliant white. The sill of cement, unpainted.</p> <p>The decorative stucco of the embrasures damaged by salts.</p>		
<p>W 1 North-West  architrave Three-quarter round, inside edge with cavetto; moulded plaster. On the outside edge a stoup moulded in render.  frame The embrasure decorated with a double register of lozenge-shaped panels repeated twice on each side.</p>	<p>W 1  architrave 1958    frame 1958</p> <p>1762 Chute drawing represents W 1 open  1781 published plan shows W 1 blocked.  1861 - 1958 Lady Waldegrave glazed scheme  1958 AER reopened</p>	
<p>W 2 North  architrave As W 1;  frame A larger version of W 1, arranged as a double register but with four repetitions of lozenge motif.  furniture Hinged grill with lock box.  other The opening fitted with a hinged steel gate. Knob and box lock fixed, lock not used.</p>	<p>W 2 1962  architrave 1958/9  frame 1958/8</p> <p>furniture  other Grill 1958</p>	<p>Restore fixed bars, five uprights and obelisk finials and an upper vertical brace fixed in the embrasure as represented by Chute and Carter.</p> <p>Relocate existing iron gate elsewhere subject to further research.</p>
<p>W 3 North-East</p>	<p>W 3  1781 Open  1861 Probably completely lost to make doorway to Vestibule.  1958 AER uncovered and restored by  1984 impact of John Warren's work not known</p>	
<p><b>DECORATION</b>  Plain white 'weather shield' type modern external paint.</p>	<p>1780s John Carter views appears to show off white decoration.</p>	