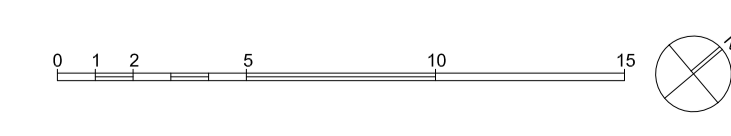


LUC
 Originator
 43 Chilton Street, London, NW1 1JD
 +44 (0)20 7383 5784
 london@landuse.co.uk
 www.landuse.co.uk

Iss	Date	Description	Dm	Chk
2	171121	for Planning	JDB	EP
1	171023	First Issue	JDB	EP

Notes
 Do not scale from this drawing
 All dimensions are drawn in millimeters
 Drawing & design copyright LUC
 Reproduction of this drawing in whole or in part is prohibited without prior permission.

Key	
	Public Open Space 5196m ²
	Pedestrian footways etc 512m ²
	Cartiageway, parking space etc. 1465m ²
	Existing buildings 1119m ²
	Inaccessible 806m ²



Project / Client
Twickenham Rediscovered Programme
 for London Borough of Richmond Upon Thames
 Scale @ A1
 1:200

Drawing Title		Existing Site Areas		Status	Job Nr	Drawing Nr	Issue
				for Planning	7085	LUC-LD PLN 002	2