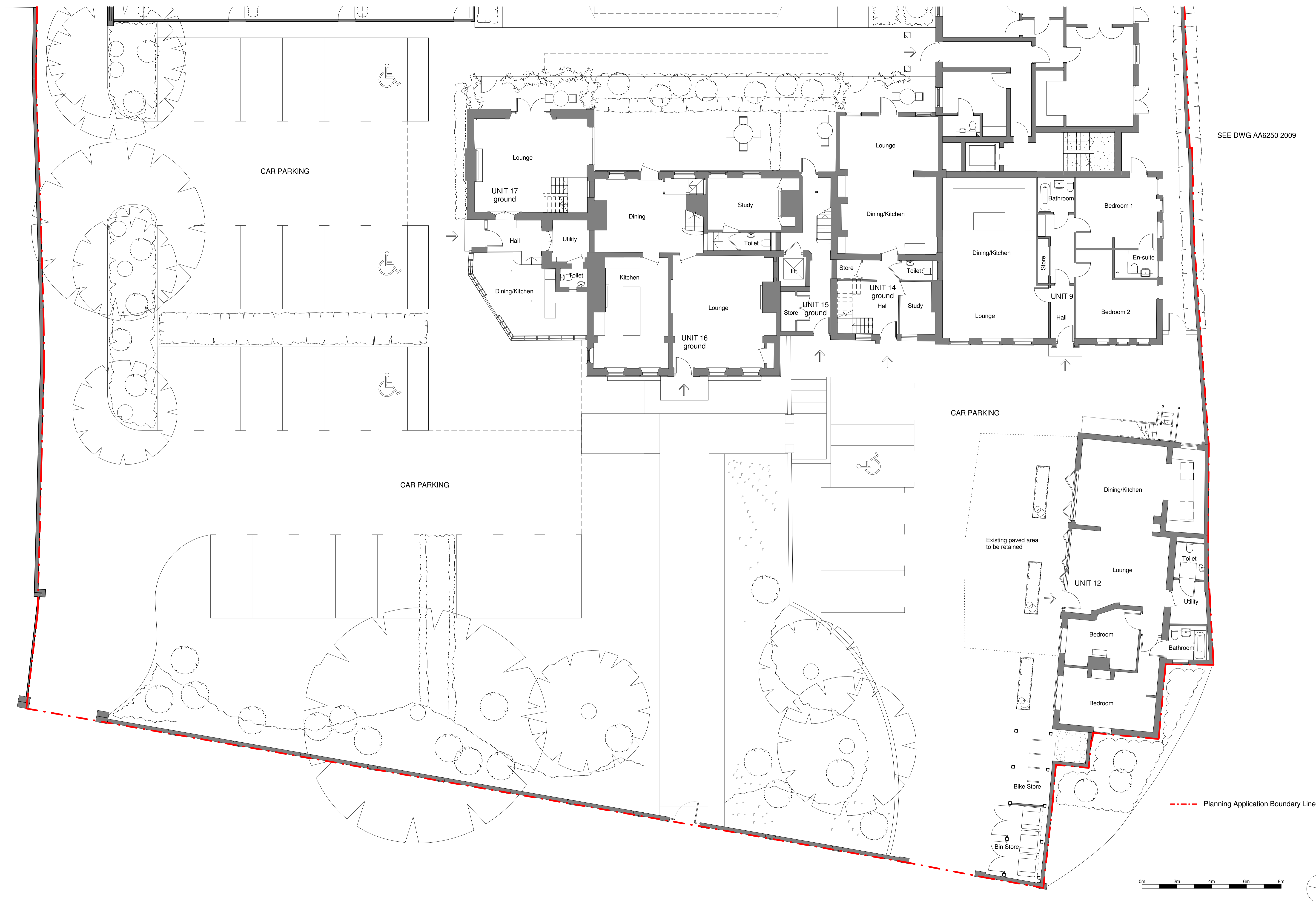


SEE DWG AA6250 2009



Rev	Date	Description	Dwn	Chk	Drawn	ed
A	07-06-17	Gateposts retained in existing location	ed	JB	Checked	PD
B	04-08-17	Amendments as per Conservation Officer comments: removal of parking spaces and balconies to units 7, 8, 10 & 11 and retention of existing paving at front of Coach House.	ed	JB	Date	April '17
C	09-08-17	Amendments as per planning consultant comments	ed	JB	Scale @ A1	1 : 100