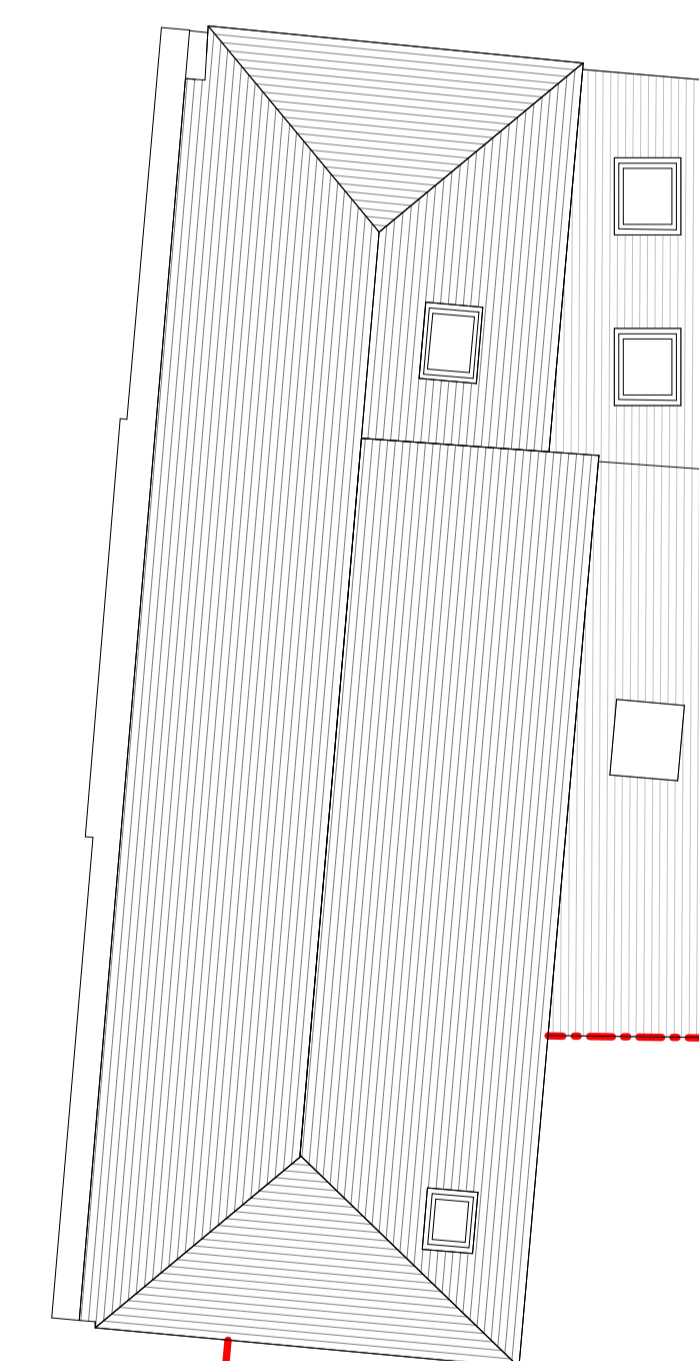
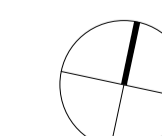


SEE DWG AA6250 2011



--- Planning Application Boundary Line



Rev	Date	Description	Dwn	Ckd	Drawn	ed
-		First Issue				
A	04-08-17	Amendments as per Conservation Officer comments: removal of parking spaces and balconies to units 7, 8, 10 & 11 and retention of existing paving at front of Coach House.	ed	JB	Checked	PD
B	09-08-17	Amendments as per planning consultant comments	ed	JB	Date	April '17
					Scale @ A1	1 : 100

St Michael's Convent, Ham
Main Building & Coach House
Proposed Second Floor

AA6250 R2-2007
REV B
PLANNING

