

# Luminaire Specification

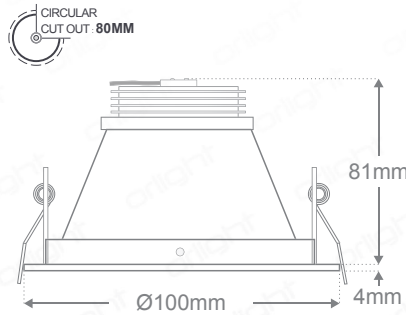
## EZENTIAL100 - Ezential 100 LED Downlight



### Description

Ezential 100 Solid State fixture combines advanced thermal management with a CREE 1512 chipset to enable superior performance. Aluminium construction to IP54 with opal diffuser for glare reduction. A single chipset ensures uniformity of the light beam with a CRI >80 light quality assurance. Colour consistency is adhered to with a 2-Step MacAdams Ellipse binning strategy. Chip Life TM-21 L70 value > 60,500 hours  
Available in combination with Mains Dimmable, 1-10V and DALI dimmable Power Supplies.

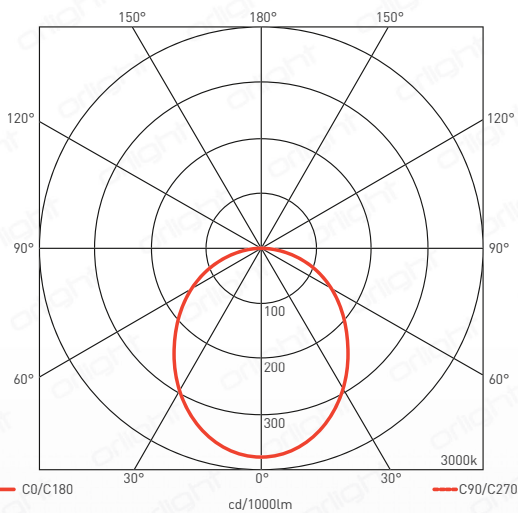
### Dimensions



### Standards



### Polar Report



### Specifications

Chipset	CREE 1512 Chipset		
Dimming Options	Mains; 1-10V; Dali		
Power Consumption	9W Fixture / 10W Circuit Power		
Voltage	36V		
Colour Temperature	3000K	4000K	5000K
Light Output ~	730lm	765lm	770lm
lm Per Watt ~	73lm/W	76lm/W	77lm/W
CRI	>80	>80	>80
Beam Angle	100°		
Binning	2 Step MacAdams Ellipse		
Chip Life TM-21	L70 > 60,500 hrs		
IP Rating	54		
Weight	258g		
Finish	White Bezel		

#### 3000K

R1	R2	R3	R4	R5	R6	R7	R8
81	89	96	82	80	86	85	62
R9	R10	R11	R12	R13	R14	R15	
11	74	81	68	82	98	73	

#### 4000K

R1	R2	R3	R4	R5	R6	R7	R8
80	87	93	82	79	82	88	67
R9	R10	R11	R12	R13	R14	R15	
11	69	80	56	81	96	73	

#### 5000K

R1	R2	R3	R4	R5	R6	R7	R8
81	88	93	82	80	82	89	69
R9	R10	R11	R12	R13	R14	R15	
13	71	80	54	83	96	75	

Product Coding: Example: EZENTIAL100-WH-4000K-DALI

\*Accessories

CODE	SIZE	FINISH	COLOUR TEMP	DIMMING OPTION	EMERGENCY OPTION	DRIVERS
EZENTIAL	100	WH - (WHITE)	3000K	D - (Mains Dim)	EM	MTG21 DR DIM
			4000K	1-10V	EM	JOLLY-MINI-1-10V-LC
			5000K	DALI	EM	JOLLY-MINI-DALI-LC

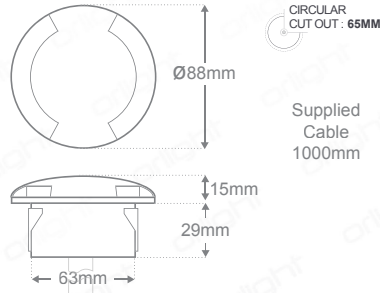
\*Refer to Accessories

## ORLLM88-2 - Marine Grade Two-Way Led Fixture

### Description

Marine grade 316 stainless steel in-ground dual marker light complete with integral CREE LED package. Fixture rated to IP68 allowing submersion in water thus negating common issues arising from lack of soil drainage. Configured to 2 x 40 degree beam as standard, product functions with 350mA constant current driver. No mechanical joints to light source ensures robust protection against water ingress. Product runs cool meeting all "touch temperature" requirements.

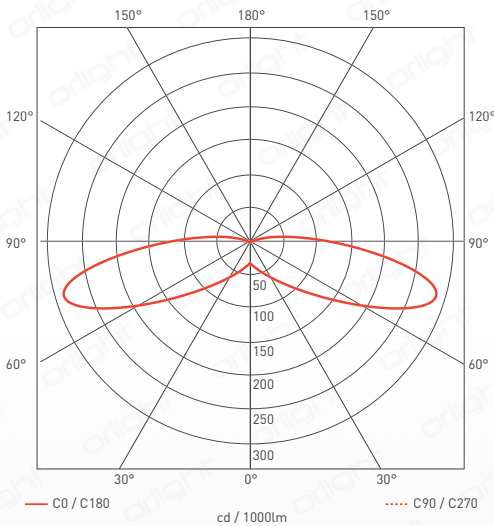
### Dimensions



### Standards



### Polar Report



### Specifications

Chipset	5050 - CREE	
Dimming Options	1-10V; DALI	
Power Consumption	3W	
Voltage	9V	
Colour Temperature	3000K	5000K
Light Output ~	240lm	270lm
lm Per Watt ~	80lm/W	90lm/W
CRI	>80	>75
Beam Angle	2 x 40°	
Binning	4 Step MacAdams Ellipse	
Chip Life TM-21	L70 > 60,500 hours	
IP Rating	68	
Operating Ambient Temp	-20-50 °C	
Max Surface Operating Temp	65 °C	
Weight	650g	
Finish	316 Marine Grade Stainless Steel	

### Colourmetrics

#### 3000K

R1	R2	R3	R4	R5	R6	R7	R8
81	87	93	83	80	84	86	64
R9	R10	R11	R12	R13	R14	R15	
13	70	82	64	82	96	73	

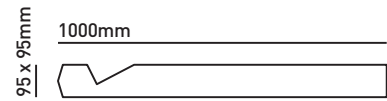
#### 5000K

R1	R2	R3	R4	R5	R6	R7	R8
64	72	80	69	65	63	80	54
R9	R10	R11	R12	R13	R14	R15	
0	35	65	37	64	89	55	

Product Coding: Example: ORLLM88-2-SS-3000K

\*Accessories

CODE	FINISH	COLOUR TEMP	DIMMING OPTION	DRIVERS
ORLLM88-2	SS-(STAINLESS STEEL)	3000K	ND-(SWITCHED)	ORLRPV350CC - (IP68)
		5000K	1-10V	JOLLY-MINI-1-10V - (IP20)
			DALI	JOLLY-MINI-DALI - (IP20)
			*Refer to Accessories	



# BOL LED MAINS

STRAIGHT TO MAINS LED WOODEN BOLLARD

## PRODUCT DATA

Product code	BOL LED 030 MAINS
Colours available (LED)	White (WH), Warm white (WW) & Blue (BL)

## PHOTOMETRICS

Beam angle (°)	110	
Colour temperature (K)	±175k	WH: 6000      WW: 3000
CRI (colour rendering index)	R8	WH: 70      WW: 85
Life of LED (hrs)	70,000	
Luminous flux (lm)	WH: 212	
Wattage (W)	5	
Luminous efficacy (lm/w)	WH: 42	
Lux @ 1m	WH: 104	

## WIRING

Drivers	N/A (350mA LED driver built in)
Cable/flying lead (m)	1.8
Type of wiring required	Parallel (mains)

## GENERAL

Accessories	BOL LED BRACKET, JB1 & JB5
Bathroom zone	N/A
Construction material (body)	Iroko wood
Cut-out (mm)	N/A
Face temperature when lit (°C)	43
IK rating	N/A
IP rating	65
Max drive over speed (mph)	N/A
Rotation angle (°)	N/A
SELV (safety extra low voltage)	Yes
Tilt angle (°)	N/A
Warranty (yrs)	1
Weight (Kg)	TBC

## FEATURES

To retain original colour, treatment will be required every 1-2 years, otherwise the wood will weather and turn a natural grey colour.

All data quoted is subject to change without prior notice

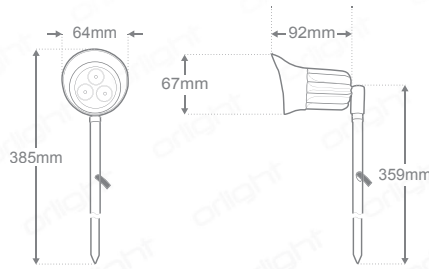
## ORLLM66 - Marine Grade Led Spike Fixture

### Description

Marine grade 316 stainless steel in-ground spike fixture complete with integral CREE LED package. Configured to 15 degree beam as standard, product functions with 350mA constant current driver. No mechanical joints to light source ensures robust protection against water ingress. Product runs cool meeting all touch temperature requirements.



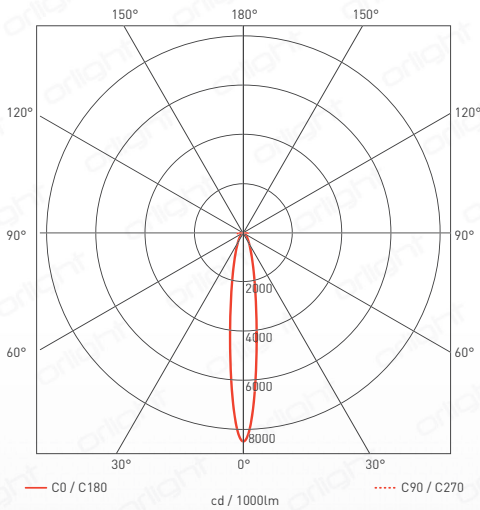
### Dimensions



### Standards



### Polar Report



### Specifications

Chipset	5050 - CREE	
Dimming Options	1-10V; DALI	
Power Consumption	3W Fixture / 5W Circuit Power	
Voltage	9V	
Colour Temperature	3000K	5000K
Light Output ~	235lm	290lm
lm Per Watt ~	78lm/W	97lm/W
CRI	>80	>70
Beam Angle	15°	
Binning	4 Step MacAdams Ellipse	
Chip Life TM-21	L70 > 60,500 hours	
IP Rating	65	
Operating Ambient Temp	-20-50°C	
Max Surface Operating Temp	65°C	
Weight	925g	
Finish	316 Marine Grade Stainless Steel With Polished Reflector	

### Colourmetrics

3000K

5000K

R1	R2	R3	R4	R5	R6	R7	R8	R1	R2	R3	R4	R5	R6	R7	R8
79	87	94	82	78	83	86	61	67	73	77	71	68	64	79	58
R9	R10	R11	R12	R13	R14	R15		R9	R10	R11	R12	R13	R14	R15	
6	69	80	63	80	96	71		0	35	69	42	67	87	60	

Product Coding: Example: ORLLM66-SS-3000K-DALI

\*Accessories

CODE	FINISH	COLOUR TEMP	DIMMING OPTION	DRIVERS
ORLLM66	SS - (STAINLESS STEEL)	3000K	ND-(SWITCHED)	ORLRPV350CC - (IP65)
		5000K	1-10V	JOLLY-MINI-1-10V - (IP20)
			DALI	JOLLY-MINI-DALI - (IP20)
			*Refer to Accessories	

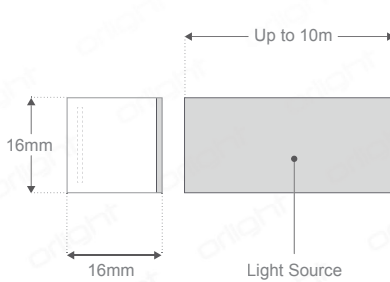
## LUMENFLEX-SIDE - Linear LED - Side Emitting



### Description

IP68 rated flexible LED strip offering a uniform and even light distribution with no LED hotspots. Suitable for both interior and exterior applications. Injection moulded connections ensure IP68 integrity. Available in a variety of colour temperatures with a light quality assurance of CRI > 80. 2-Step MacAdams Ellipse binning strategy for colour consistency. Please refer below for available accessories.

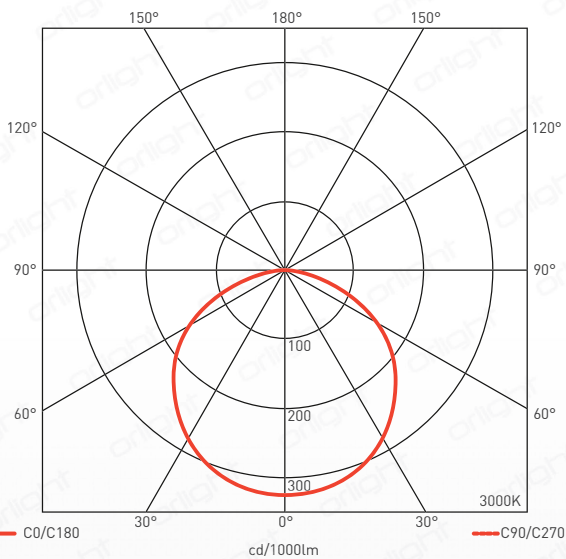
### Dimensions



### Standards



### Polar Report



### Specification

Chipset	High Efficient SMD3014 LED			
Dimming Options	Non-Dim; Mains; 1-10V; DALI			
Power Consumption	12W / Meter			
Voltage	DC24V			
Colour Temperature	2400K	2700K	3000K	4000K
Light Output ~	550lm	580lm	600lm	610lm
lm Per Watt ~	46lm/W	58lm/W	50lm/W	51lm/W
CRI	>80	>80	>80	>80
Beam Angle	120°			
Binning	2 Step MacAdams Ellipse			
IP Rating	IP68			
IK Rating	IK08			
Length Cut Intervals	55mm			
Maximum Length	10m (20m Both Ends Feed)			
Working Ambient Temp	-20°C ~ 40°C			

### Colourmetrics

#### 2400K

R1	R2	R3	R4	R5	R6	R7	R8
79	91	94	77	79	92	79	53
R9	R10	R11	R12	R13	R14	R15	
1	81	76	74	82	97	69	

#### 2700K

R1	R2	R3	R4	R5	R6	R7	R8
78	90	96	77	78	88	81	54
R9	R10	R11	R12	R13	R14	R15	
1	77	76	67	81	99	69	

#### 3000K

R1	R2	R3	R4	R5	R6	R7	R8
79	91	96	78	79	89	82	56
R9	R10	R11	R12	R13	R14	R15	
1	79	76	66	82	98	70	

#### 4000K

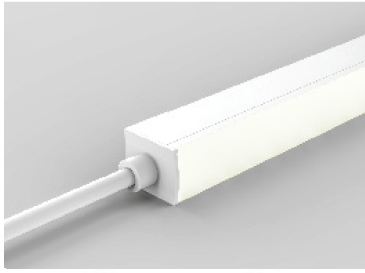
R1	R2	R3	R4	R5	R6	R7	R8
77	86	95	79	76	81	87	60
R9	R10	R11	R12	R13	R14	R15	
1	68	77	53	79	97	68	

Product Coding: Example: LF-SIDE-2700K-10M

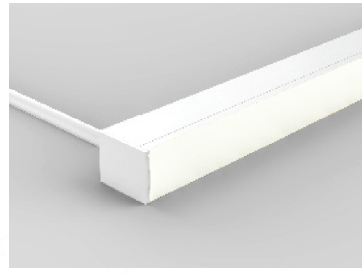
Please Specify

CODE	COLOUR TEMPERATURE	LENGTH	DIMMING	CABLE ENTRY
LF-SIDE (LUMENFLEX-SIDE)	2400K	10M MAX	MAINS	INLINE
	2700K	REFER TO LENGTH MATRIX	1-10V	REAR
	3000K		DALI	LEFT
	4000K			RIGHT
				REFER TO CABLE ENTRY

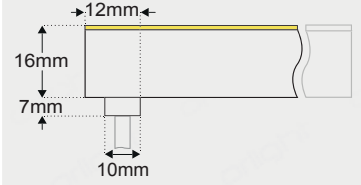
## Cable Entry



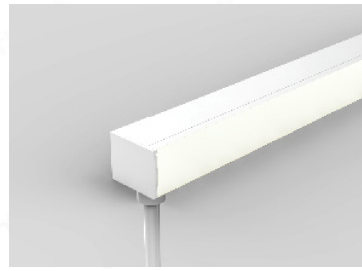
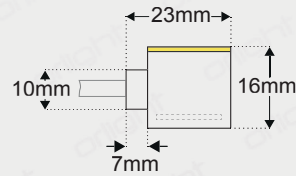
Inline Cable Entry



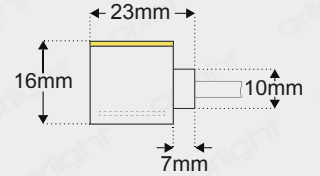
Rear Cable Entry



Left Cable Entry



Right Cable Entry



## Length Matrix

The LUMENFLEX-SIDE can be cut every 55mm, take into consideration the cable entry. The table gives information of the overall length, obtained by adding the total cable entry length (8mm) to all the available cut lengths (Up to 10m).

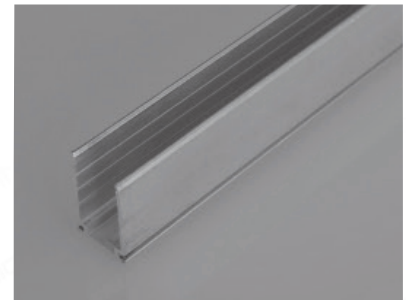
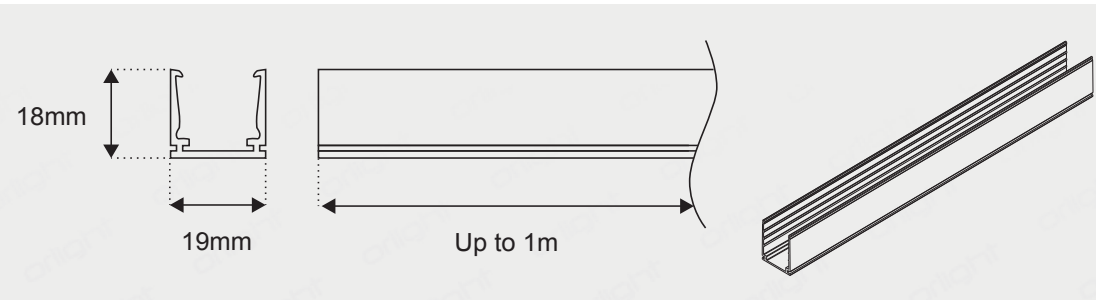
55	63	2090	2098	4125	4133	6160	6168	8195	8203
110	118	2145	2153	4180	4188	6215	6223	8250	8258
165	173	2200	2208	4235	4243	6270	6278	8305	8313
220	228	2255	2263	4290	4298	6325	6333	8360	8368
275	283	2310	2318	4345	4353	6380	6388	8415	8423
330	338	2365	2373	4400	4408	6435	6443	8470	8478
385	393	2420	2428	4455	4463	6490	6498	8525	8533
440	448	2475	2483	4510	4518	6545	6553	8580	8588
495	503	2530	2538	4565	4573	6600	6608	8635	8643
550	558	2585	2593	4620	4628	6655	6663	8690	8698
605	613	2640	2648	4675	4683	6710	6718	8745	8753
660	668	2695	2703	4730	4738	6765	6773	8800	8808
715	723	2750	2758	4785	4793	6820	6828	8855	8863
770	778	2805	2813	4840	4848	6875	6883	8910	8918
825	833	2860	2868	4895	4903	6930	6938	8965	8973
880	888	2915	2923	4950	4958	6985	6993	9020	9028
935	943	2970	2978	5005	5013	7040	7048	9075	9083
990	998	3025	3033	5060	5068	7095	7103	9130	9138
1045	1053	3080	3088	5115	5123	7150	7158	9185	9193
1100	1108	3135	3143	5170	5178	7205	7213	9240	9248
1155	1163	3190	3198	5225	5233	7260	7268	9295	9303
1210	1218	3245	3253	5280	5288	7315	7323	9350	9358
1265	1273	3300	3308	5335	5343	7370	7378	9405	9413
1320	1328	3355	3363	5390	5398	7425	7433	9460	9468
1375	1383	3410	3418	5445	5453	7480	7488	9515	9523
1430	1438	3465	3473	5500	5508	7535	7543	9570	9578
1485	1493	3520	3528	5555	5563	7590	7598	9625	9633
1540	1548	3575	3583	5610	5618	7645	7653	9680	9688
1595	1603	3630	3638	5665	5673	7700	7708	9735	9743
1650	1658	3685	3693	5720	5728	7755	7763	9790	9798
1705	1713	3740	3748	5775	5783	7810	7818		
1760	1768	3795	3803	5830	5838	7865	7873		
1815	1823	3850	3858	5885	5893	7920	7928		
1870	1878	3905	3913	5940	5948	7975	7983		
1925	1933	3960	3968	5995	6003	8030	8038		
1980	1988	4015	4023	6050	6058	8085	8093		
2035	2043	4070	4078	6105	6113	8140			

\* For Inline Cable Entry end caps please allow 7mm (See Cable Entry)

## Mounting Profile Options

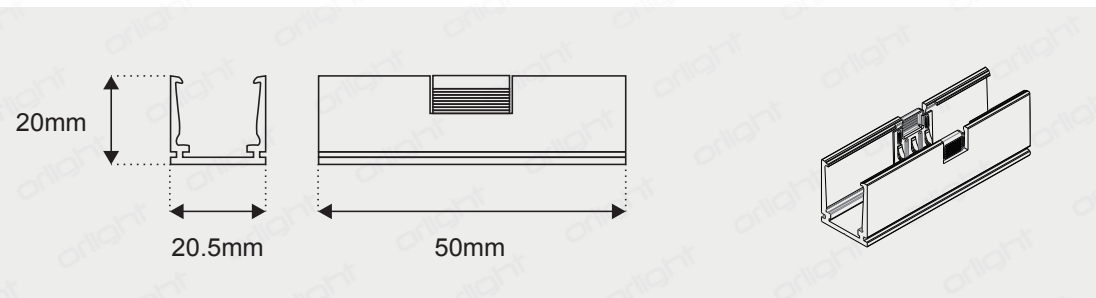
### LUMENFLEX SIDE HS - Standard Aluminium U Profile

### Standard Profile



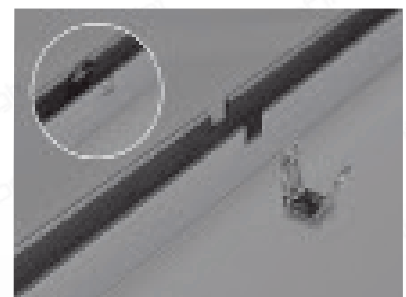
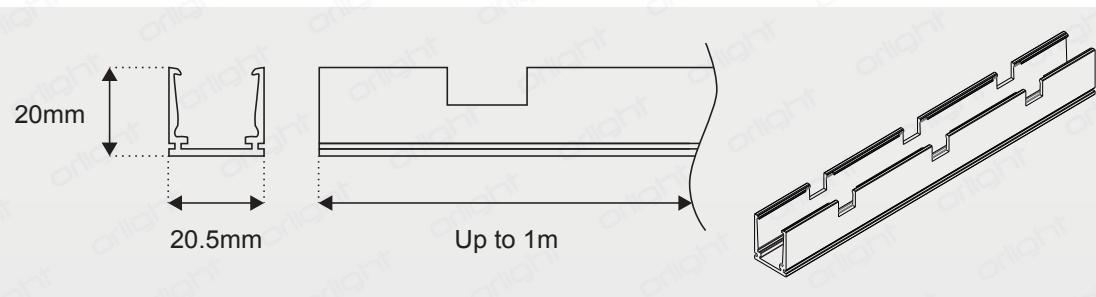
### LUMENFLEX SIDE HS-SL-50 - Self-locking Aluminium U Channel 50mm

### Self-locking 50mm Clip



### LUMENFLEX SIDE HS-SL - Self-locking Aluminium U Profile

### Self-locking Profile



## Drivers

DRIVER (Non-Dim)	SPECIFICATION	DIMENSIONS (LxWxH)	LUMENFLEX LENGTH
ORLRPV2418	LED Driver ,DC24V, 18W	140mm x 30mm x 20mm	0m - 1.5m
ORLRPV2435	LED Driver, DC24V, 35W	141mm x 40mm x 30mm	1.5m - 3m
ORLRPV2460	LED Driver, DC24V, 60W	162mm x 42mm x 32mm	3m - 5m
ORLRPV24100	LED Driver, DC24V, 100W	190mm x 52mm x 36mm	5m - 9m
ORLRPV24150	LED Driver, DC24V, 150W	222mm x 68mm x 39mm	9m+
DRIVER (Mains Dim)			
ORLRPV25-24MD	LED 25W Mains Dimmable Driver 24V	154mm x 54mm x 20mm	0m - 2m
ORLRPV50-24MD	LED 50W Mains Dimmable Driver 24V	177mm x 61mm x 24mm	2m - 4.5m
ORLRPV100-24MD	LED 100W Mains Dimmable Driver 24V	230mm x 70mm x 46mm	4.5m - 9m
INTERFACE			
ORLRPV-INTERFACE-MINI	1-10V INTERFACE	100mm x 37mm x 20mm	Up to 10m
ORLDALIINTERFACE-12/24/36V	DALI INTERFACE	100mm x 37mm x 20mm	Up to 10m