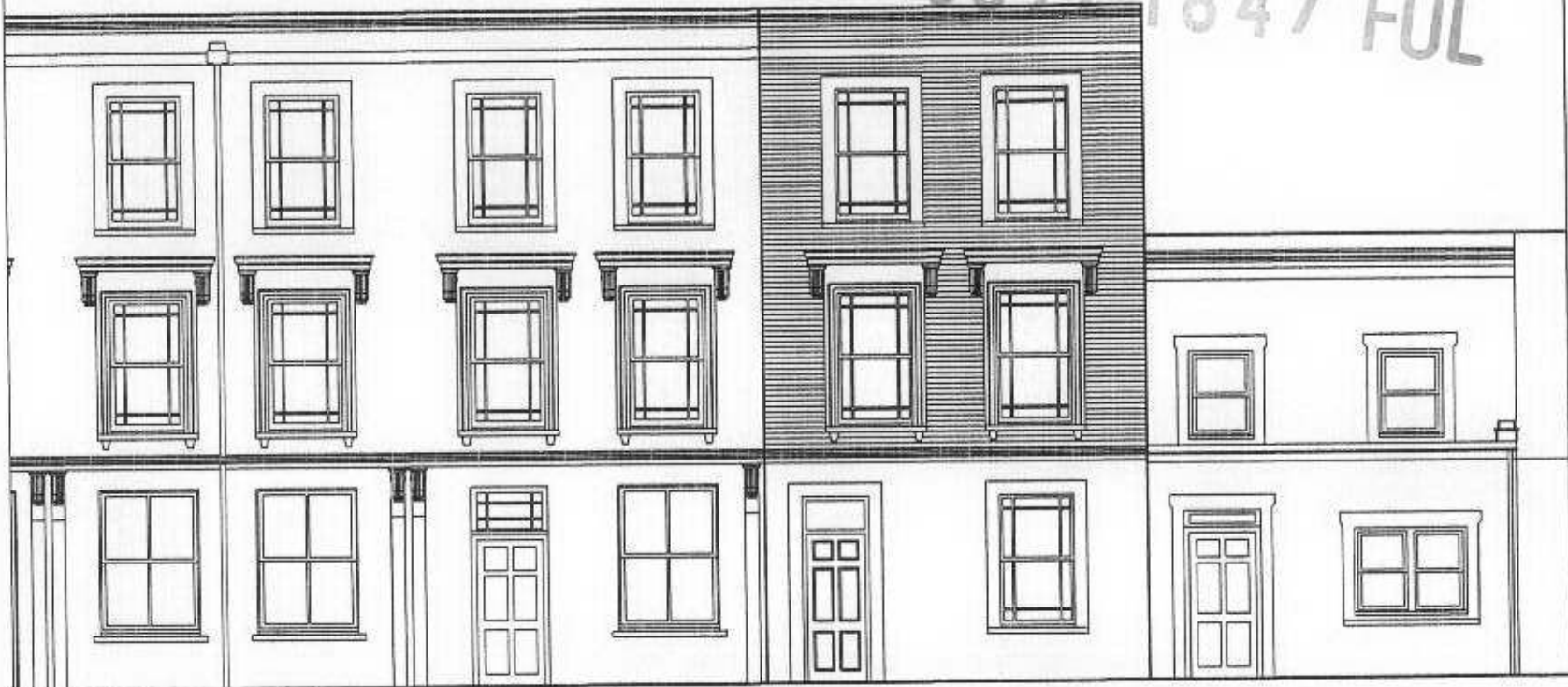


06/2184/FUL



**PROPOSED FRONT ELEVATION**

*Materials*  
 Main Walls : London stock brick to match adjacent.  
 Ground Floor : painted render, colour off white.  
 Windows : timber painted white, clear glass.  
 Railings : black painted metal to match adjacent

Revision	Description	Date	By
----------	-------------	------	----

**REVISIONS**

DO NOT SCALE FROM DRAWING. USE FIGURED DIMENSIONS ONLY. WHERE APPLICABLE, CHECK DIMENSIONS ON SITE PRIOR TO COMMENCEMENT OF WORKS

<b>WEIGHTMAN &amp; BULLEN</b> <b>ARCHITECTS</b> tel: 020 7323 9593 fax: 020 7637 0806 e-mail: wb@wb-london.com	Date	June 2006	Project	5 QUEEN'S ROAD TEDDINGTON, LONDON TW11 0LX	
	Scale	1:100		HOUSE FRONT ELEVATION	
	Drawn	JW	Dwg. No.	5565/013	
	Checked	B		Rev.	*