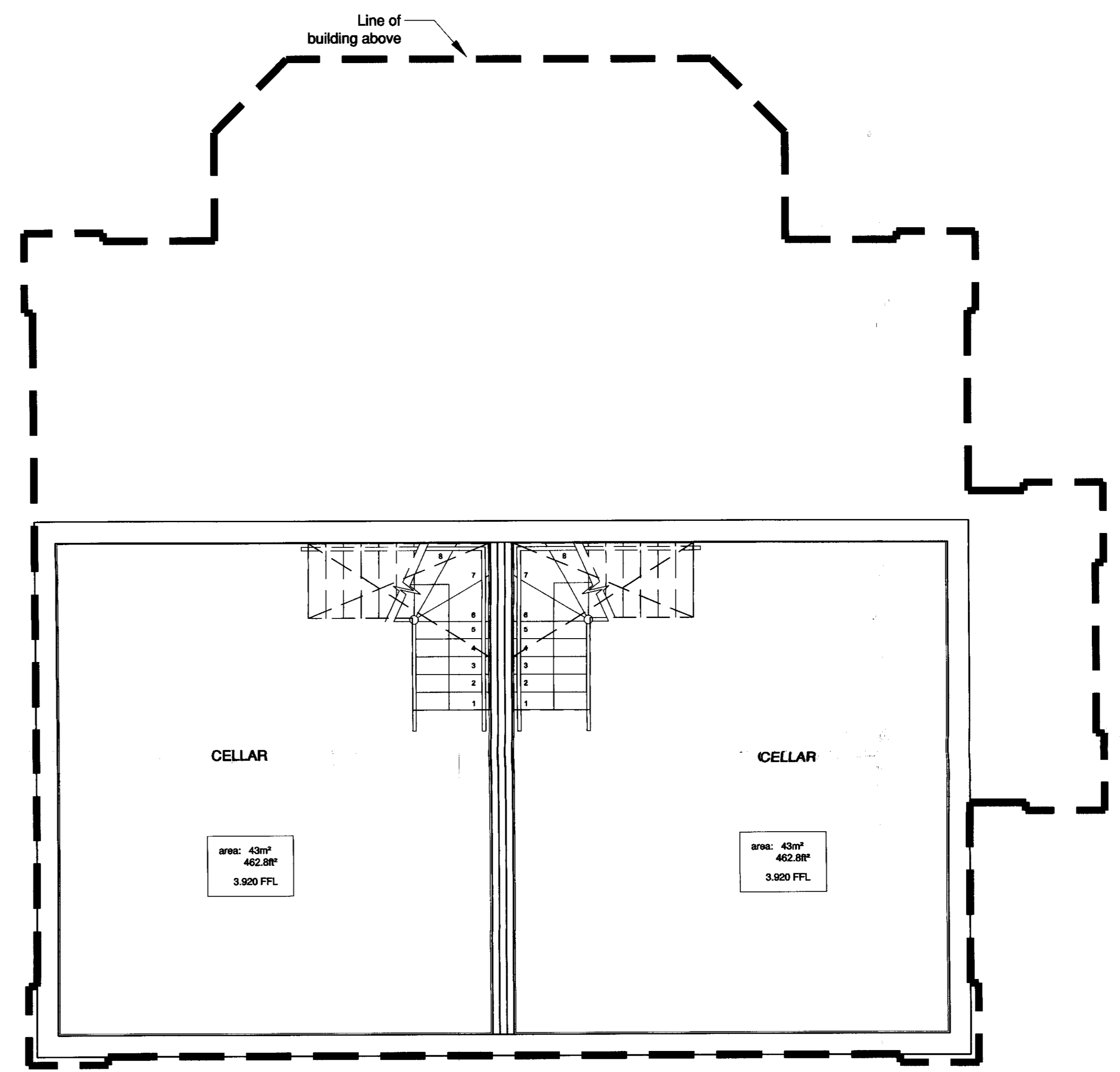
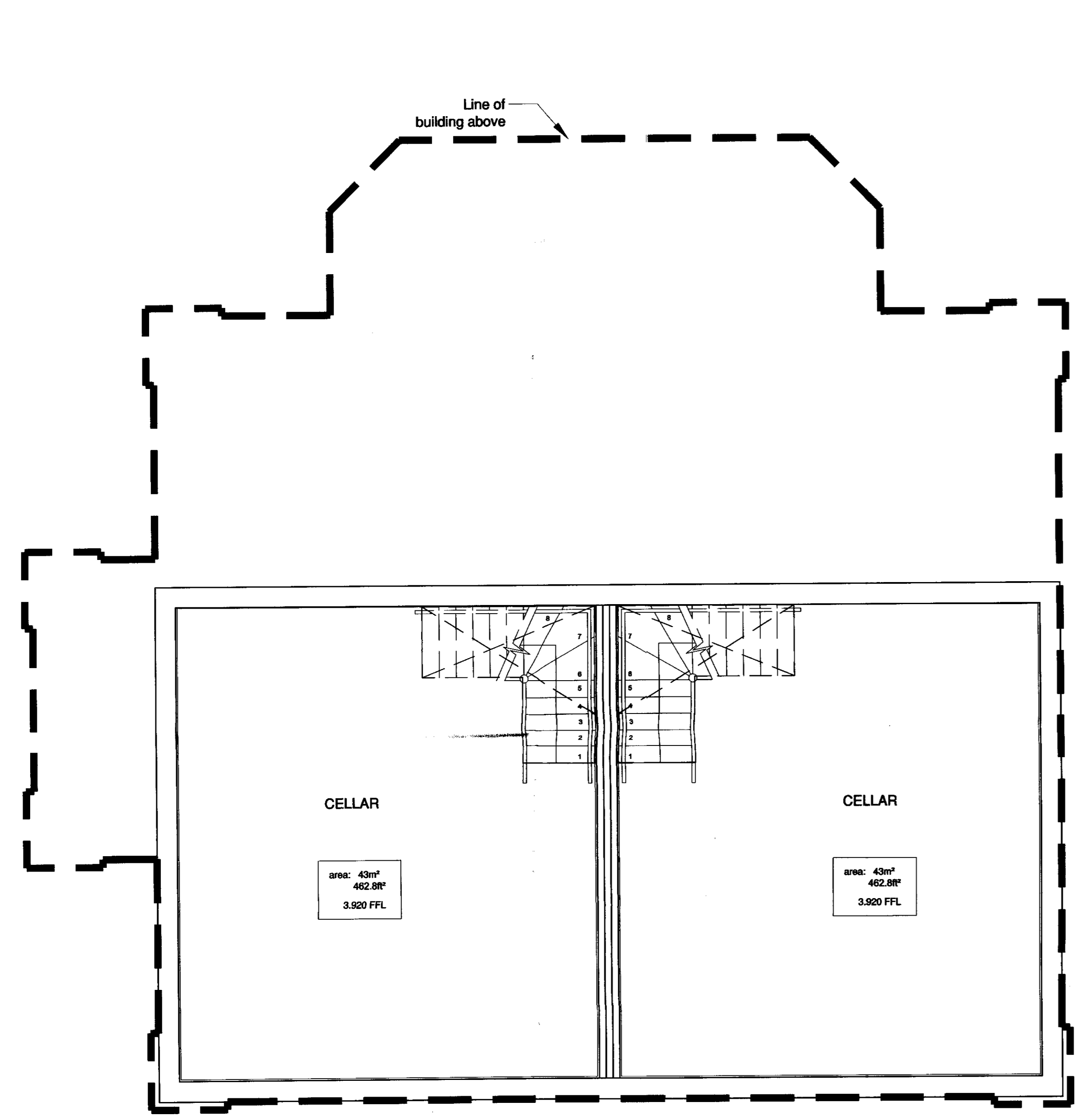


DO NOT SCALE this drawing. Figure dimensions only are to be used.
 © The drawing is the sole copyright of Design Group 3 Architects.
 Any discrepancies between this drawing and other information should be reported to the Architect.
 MODIFICATIONS TO THIS DRAWING TO BE MADE SOLELY ON ORIGINAL MAGNETIC MEDIA. ANY MAY ONLY BE CARRIED OUT BY DESIGN GROUP 3 ARCHITECTS.

Rev: Date: Description: By: Rvw:
 P01 04.01.06 Layout revised to all plots JCW
 P02 21.03.06 stone/ bike store/ cars added JCW

RECEIVED
 - 5 JUL 2006
 PLANNING

06/2191/FUL



ALL LEVELS SUBJECT TO FINAL SITE CHECK
 PRIOR TO CONSTRUCTION

Design Group 3 | Architects

	Client: 1 Queen Square, Brighton, East Sussex BN1 3FD. Telephone: 01273 720807 Fax: 01273 720808 E-mail: Brighton@dg3a.co.uk Website: www.designgroup3.co.uk			
	Project Name: The Townhouses, Richmond Lock			
Drawing Title: Typical Basement Plan				
Project No:	Drawing No:	Revision:		
0379	134	P02		
Drawing Status:	Date:	Scale:	Drawn/Reviewed:	
PLANNING	MAY 2006	1:50	JCW	