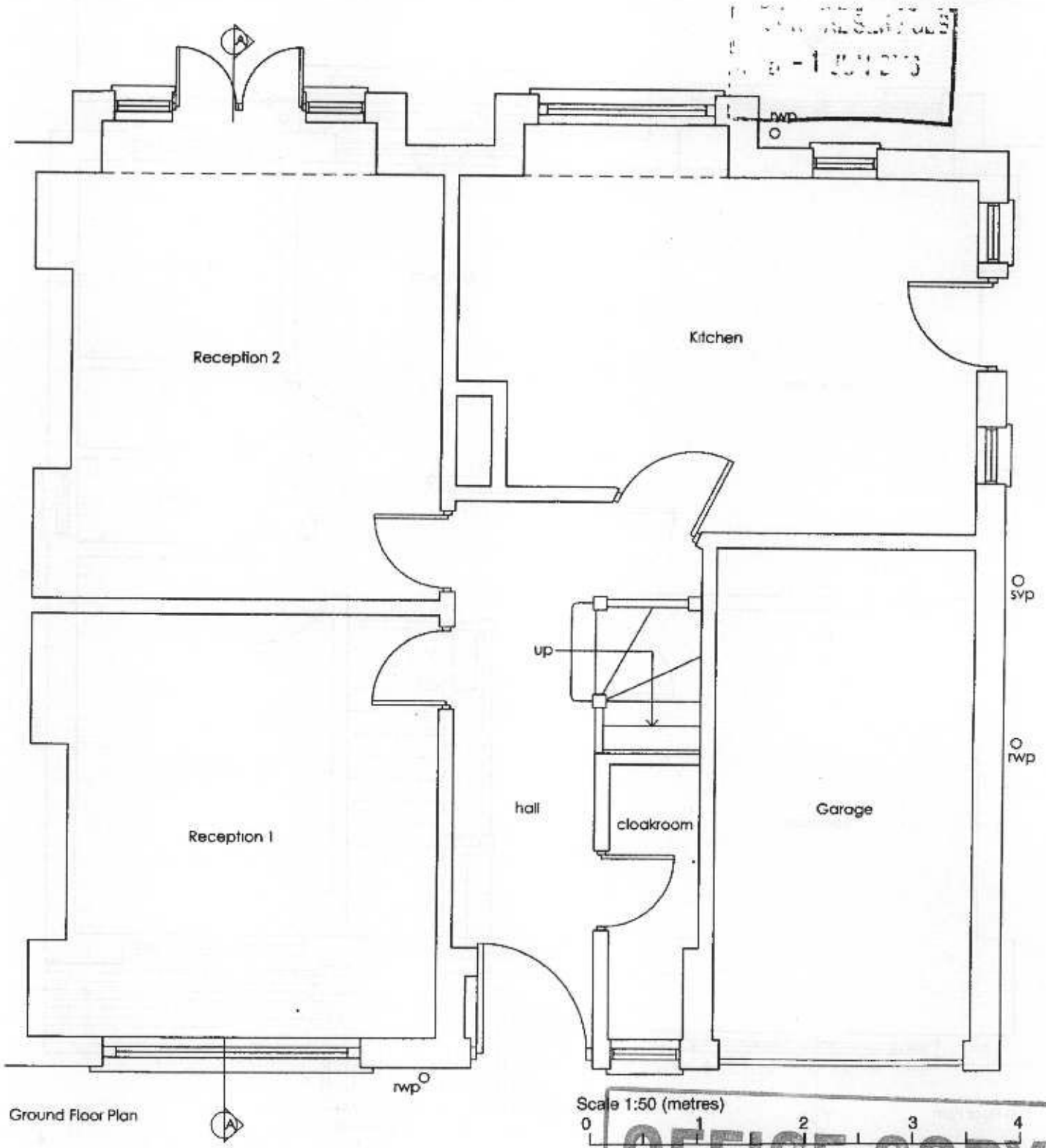


Job No. 260304	Location 102 Roehampton Vale, SW15 3RX	Sketch No. 01
Sketch By C.F	Subject Existing Ground Floor Plan (1:50)	Date 20.04.06



**Terence Fidler Partnership Ltd. - Consulting Structural Engineers**

14A High Street, Kings Langley, Herts, WD4 8BH

Email: info@tfpengineers.co.uk

