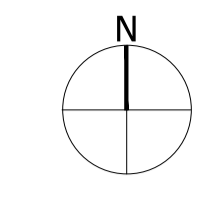


LEGEND

- Site Boundary
- Building Heights**
- 0m to 10m
- 11m to 20m
- 21m to 30m
- Above 30m



**London Borough of Richmond Upon Thames
 Townscape Character Areas**

- Area Boundaries
- 1. Waldegrave Road;
- 2. Elmfield Grove;
- 3. Teddington Pool;
- 4. Teddington High Street;
- 5. St. Marys;
- 6. Teddington Riverside;
- 7. St. Marys University Campus;
- 8. Kingston and Langham;
- 9. St. Marks Estate;
- 10. Udney Park;
- 11. Gomer Gardens;
- 12. Clarence Road;
- 13. North Fairfax;
- 14. Collis School;
- 15. South Fairfax;
- 16. St. Winifreds;
- 17. Langdon Park;
- 18. Langdon Place;
- 19. Harrowdene Gardens; and
- 20. Bushy Park

Note:
 • The existing building heights are derived from the OS MasterMap Building Height Attribute (BHA) dataset

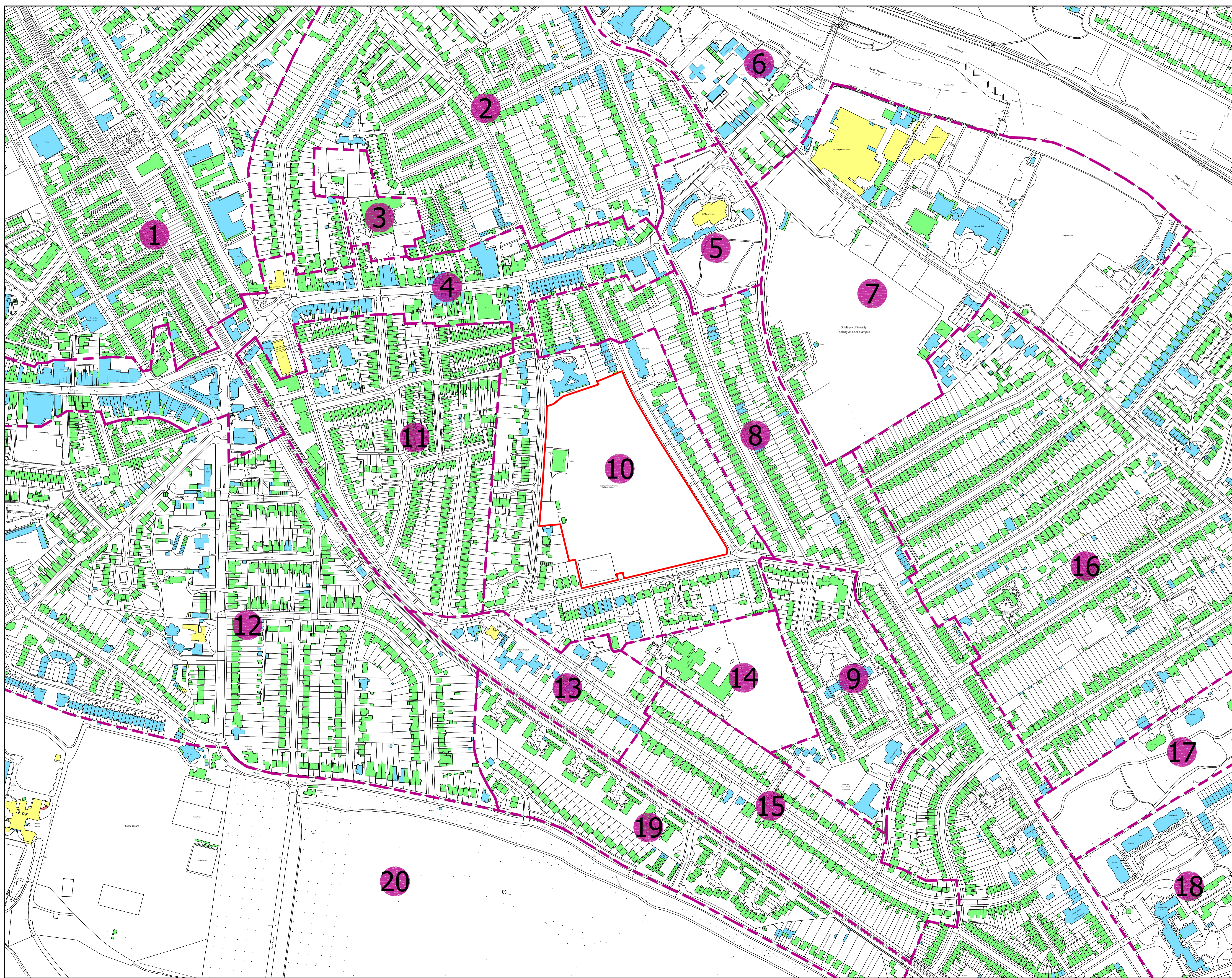


FIGURE 5

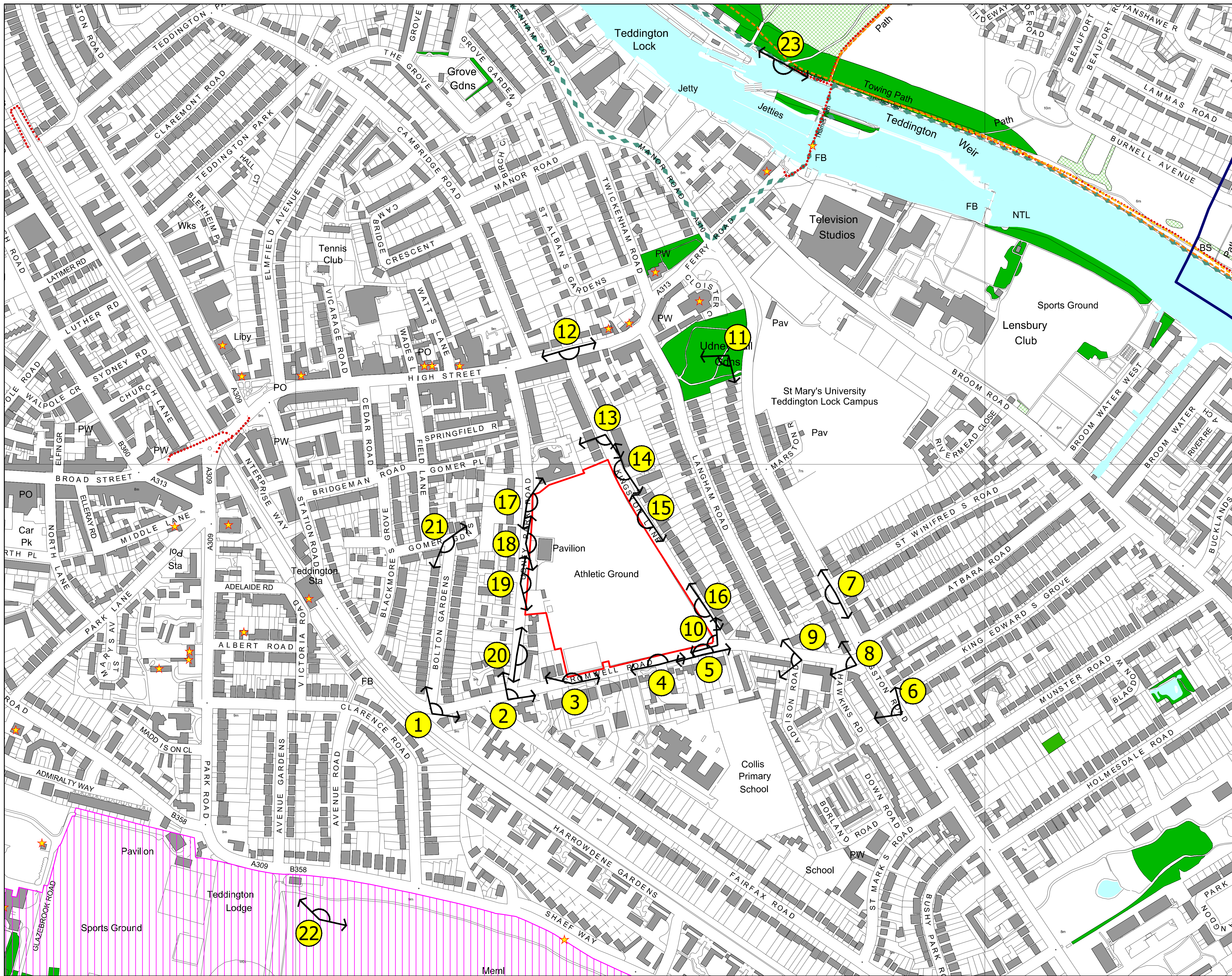
Project
**Former ICL Private Ground,
 Teddington**
 Drawing Title
Local Townscape Character Plan

Date 14.09.2017	Scale 1:2,500 @A1 1:5,000 @A3	Drawn by MK	Check by RH
Project No 25615	Drawing No L4	Revision -	



Planning • Master Planning & Urban Design • Architecture •
 Landscape Planning & Design • Environmental Planning •
 Graphic Communication • Public Engagement • Research

bartonwillmore.co.uk



The scaling of this drawing cannot be assured

Revision _____ Date _____ Dm _____ Ckd _____

LEGEND

- Site Boundary
- Existing Woodlands, Copses and Tree Belts ^
- Existing Scrub ^
- Existing Water Courses and Features ^
- Contours/Spot Heights (Metres AOD) ^
- 110m +
- Local Planning Authority Boundary ^
- Public Rights of Way */###
- Sustrans Cycle Route +
- Cycle Route ++
- National Trail/Long Distance Walk #/###
- ★ Listed Buildings ~
- Registered Parks and Gardens ~
- 1 Location of Photographic Viewpoints (Site Context Photographs 1-23)

Sources:
 ^ OS Mapping
 # Natural England GIS Data Set
 * Historic England National Monument Record GIS Data Set
 + Surrey County Council Planning GIS Data
 + Sustrans National Cycle Network GIS Data
 + Department of Transport (DOT) GIS Cycle Network Data
 ## OS Explorer Map 1:25,000 Scale

Data collected for contours and analysis mapping is based on publicly available sources at the time of preparation inserted using the British National Grid and may itself not be accurate. Barton Willmore shall not be liable for the accuracy of data derived from external sources.

FIGURE 6

Project
Former ICL Private Ground,
Teddington

Drawing Title
Visual Appraisal Plan

Date 14.09.2017	Scale 1:2,500 @A1 1:5,000 @A3	Drawn by GG	Check by RH
Project No 25615	Drawing No L6		Revision -

BARTON WILLMORE

Planning • Master Planning & Urban Design • Architecture •
 Landscape Planning & Design • Environmental Planning •
 Graphic Communication • Public Engagement • Research

bartonwillmore.co.uk

Reproduced from the Ordnance Survey Map with the permission of the Controller of HMSO. Crown Copyright Reserved. Licence No. 100019279.

3:\25600-25999\25600-25699\25615 - Teddington Athletic Ground\A4 - Dwg & Registers\Landscape\25615 L6 Visual Appraisal Plan.dwg - A1



The scaling of this drawing cannot be assured

Revision _____ Date _____ Dwn _____ Ckd _____

LEGEND

- Site Boundary
- Existing Woodlands, Copses and Tree Belts ^
- Existing Scrub ^
- Existing Water Courses and Features ^
- Contours/Spot Heights (Metres AOD) ^
- Local Planning Authority Boundary ^
- Area under Construction
- Existing Light Sources - Indicative Locations
- Built Up Areas of Settlement
- Sports Pitch Light Source

Sources: ^ OS Mapping

Data collected for contours and analysis mapping is based on publicly available sources at the time of preparation inserted using the British National Grid and may itself not be accurate. Barton Willmore shall not be liable for the accuracy of data derived from external sources.

FIGURE 7

Project
Former ICL Private Ground,
Teddington

Drawing Title
Night Time Lighting Plan

Date	Scale	Drawn by	Check by
14.09.2017	1:2,500 @A1 1:5,000 @A3	MN	RH
Project No	Drawing No	Revision	
25615	L14	-	



Planning • Master Planning & Urban Design • Architecture •
Landscape Planning & Design • Environmental Planning •
Graphic Communication • Public Engagement • Research

bartonwillmore.co.uk

Offices at: Birmingham Bristol Cambridge Cardiff Edinburgh Glasgow Leeds London Manchester Newcastle Reading Southampton



The scaling of this drawing cannot be assured

Revision	Date	Drn	Ckd

LEGEND

- Site Boundary
- Contours/Spot Heights (Metres AOD) ^
- Other Open Land of Townscape Importance *
- Area poorly provided with Public Open Space *
- High Constraints Due to Inter-Visibility with Existing Receptors. Built Form to be Limited and Set within a Robust Landscape Structure
- Medium Constraints Due to Screening Provided by Existing Vegetation Bordering the Eastern Edge of the Site. Suitable for Built Form Set within a Robust Landscape Framework and of Sensitive Massing Area for Sports Provision
- New Public Open Space Providing an Offset to Fullerton Court
- Channeled or Largely Filtered Views
- Partial Views Primarily From Upper Storey Windows
- No Views
- Retain and Enhance Existing Vegetation with Built Form Offset from Root Protection Areas
- Varying Boundary Treatments in Different States of Repair
- New Access Routes Across the Site
- Thames Lea Tunnel including 6 meters Offset and no Build Zone

Source: OS Mapping
 * London Borough of Richmond upon Thames Local Plan - Proposals Map, Adopted July 2015

Data collated for constraints and analysis mapping is based on publicly available sources at the time of preparation inserted using the British National Grid and may itself not be accurate. Barton Willmore shall not be liable for the accuracy of data derived from external sources.

FIGURE 8

Project
 Former ICL Private Ground,
 Teddington

Drawing Title
 Landscape Opportunities and
 Constraints Plan

Date	Scale	Drawn by	Check by
14.09.2017	1:1,250 @A2	GG	RH
Project No	Drawing No	Revision	
25615	L7	-	



Planning • Master Planning & Urban Design • Architecture •
 Landscape Planning & Design • Environmental Planning •
 Graphic Communication • Public Engagement • Research

bartonwillmore.co.uk

ISO 9001 Quality Standard

Aerial photograph captured 2015