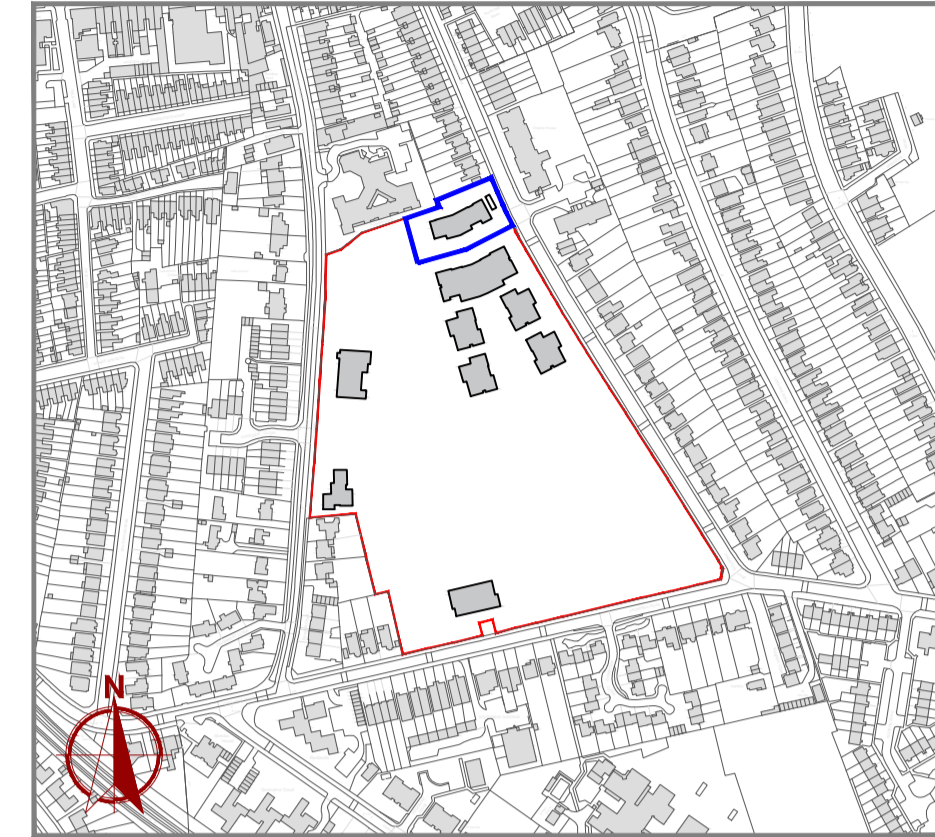


PLANNING

This drawing is the copyright of Quantum Group and may not be copied/reproduced or altered in anyway without written authority.
 Do Not Scale. Use figure dimensions.
 Check all dimensions on site before work proceeds, report discrepancies to Architect.
 If In Doubt Ask!!

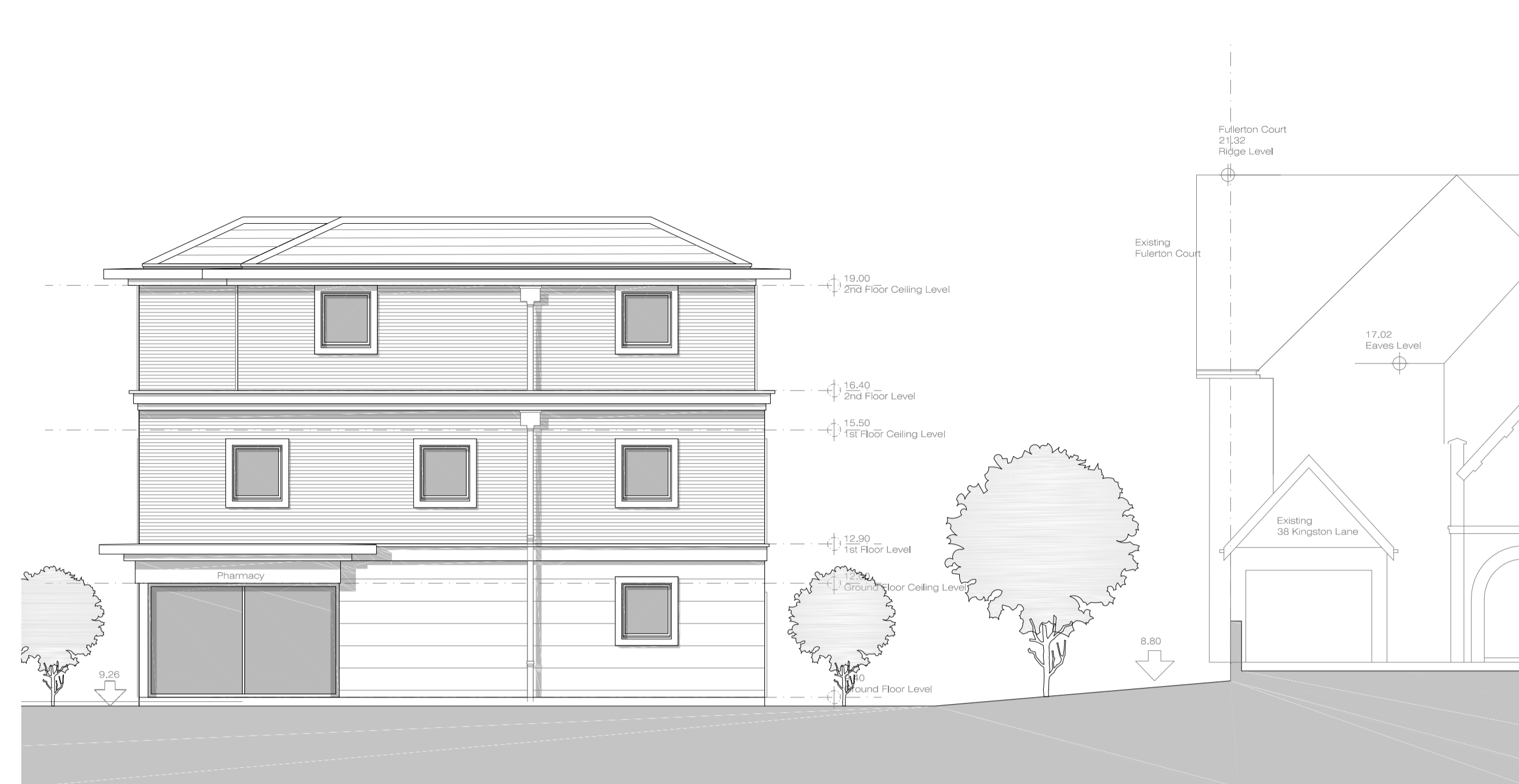
NOTES:



Location Plan - 1:5000



West Elevation



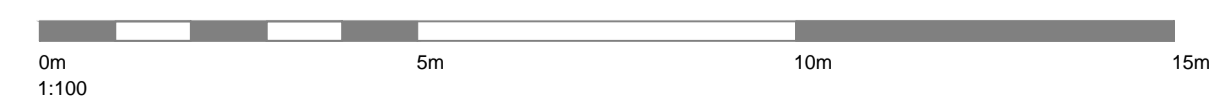
East Elevation



North Elevation



South Elevation



			JC
Rev	Date	Description	Initials



Quantum House, 170 Charminster Road, Charminster, Bournemouth, BH8 9RL.
 Email: info@quantumhomes.co.uk | Web: www.quantumhomes.co.uk
 Tel: 01202 531635 | Fax: 01202 531650

Project:

Former Imperial College
 Private Ground, Udney Park
 Road, Teddington

Drawing Title:

Plot A - GP Surgery
 Proposed Elevations

Discipline:

ARCHITECTURAL

Drawn by:

PL

Checked by:

SH

Scale:

1:100@A1

Date:

Aug 2017

Drawing Number:

900-P309

Revision: