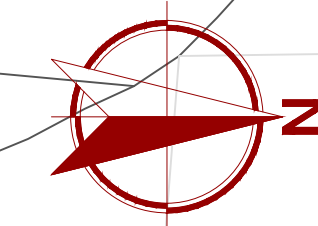


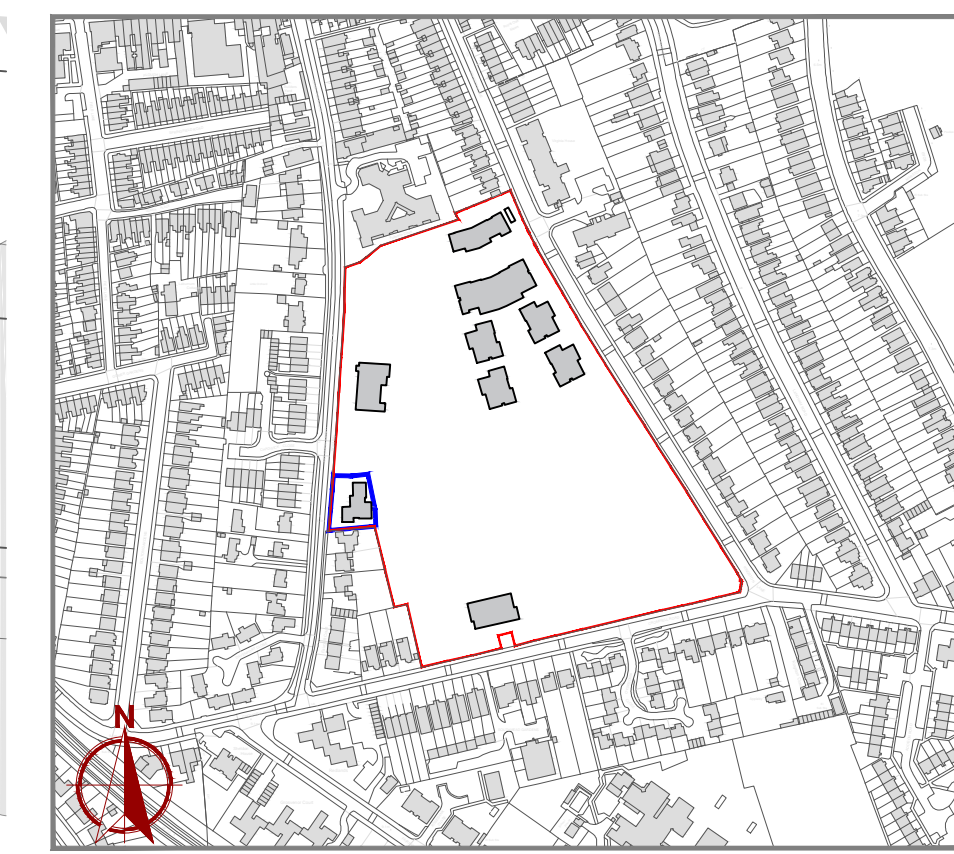
When Scaled correctly this bar measures 100mm.

# PLANNING

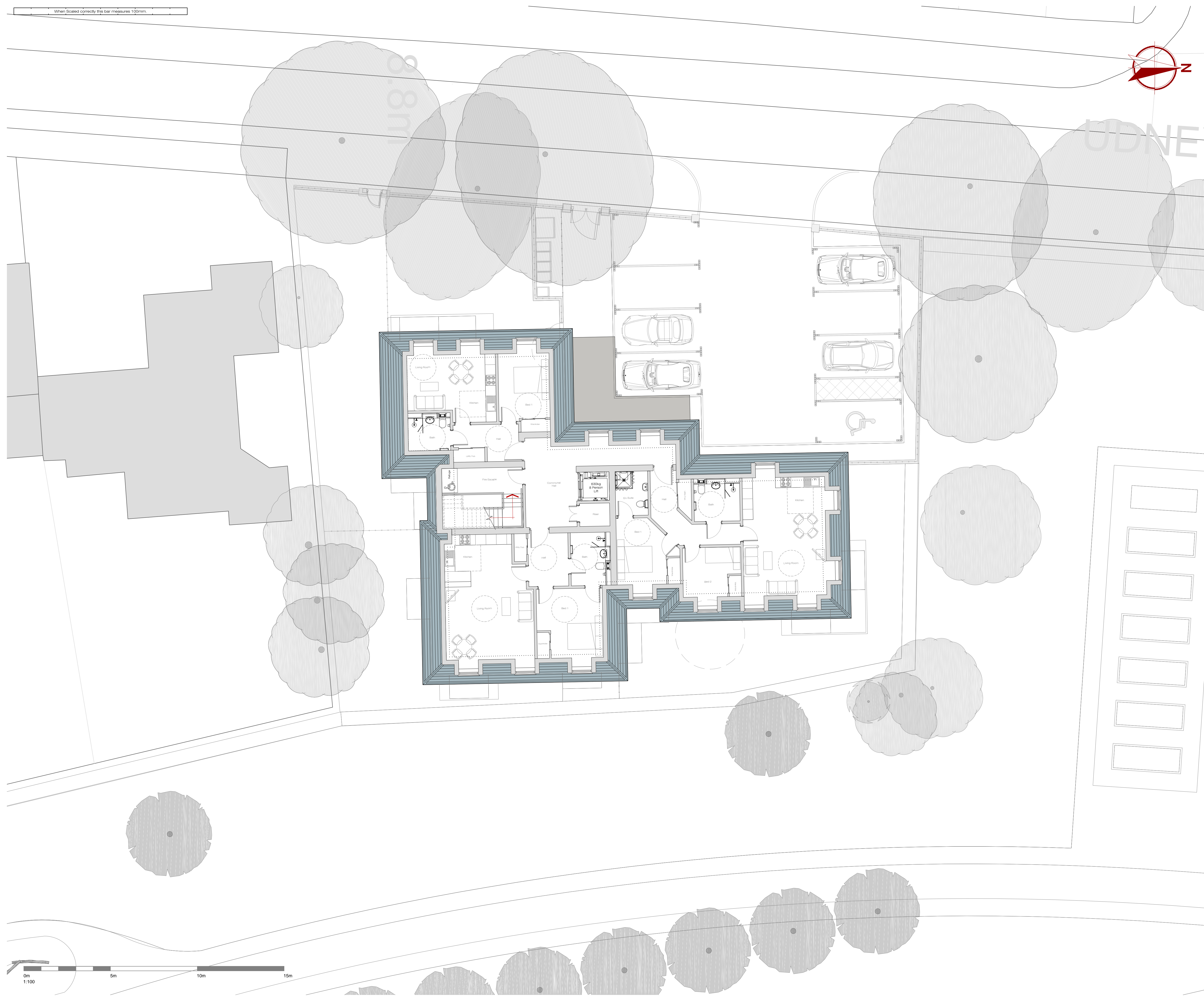
This drawing is the copyright of Quantum Group and may not be copied/reproduced or altered in anyway without written authority.  
Do Not Scale, Use figure dimensions.  
Check all dimensions on site before work proceeds, report discrepancies to Architect.  
If In Doubt Ask!!



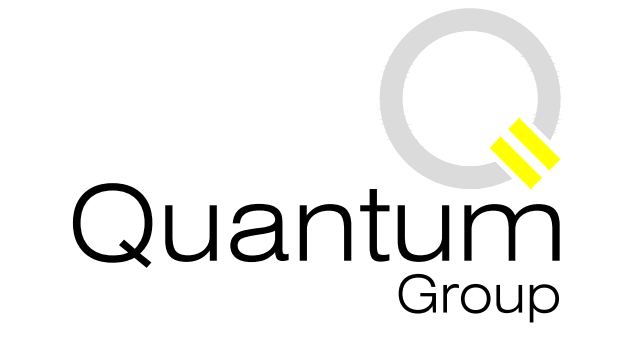
NOTES:



Location Plan - 1:5000



Rev	Date	Description	Initials



Quantum House, 170 Charminster Road, Charminster, Bournemouth, BH8 9RL.  
Email: info@quantumhomes.co.uk | Web: www.quantumhomes.co.uk  
Tel: 01202 531635 | Fax: 01202 531650

Project:  
**Former Imperial College  
Private Ground, Udney Park  
Road, Teddington**

Drawing Title:  
**Plot C - Existing Car Park  
Proposed Second Floor Plan**

Discipline:  
**ARCHITECTURAL**

Drawn by: JC      Checked by: SH

Scale: 1:100@A1      Date: Aug 2017

Drawing Number: **900-P502**      Revision:

