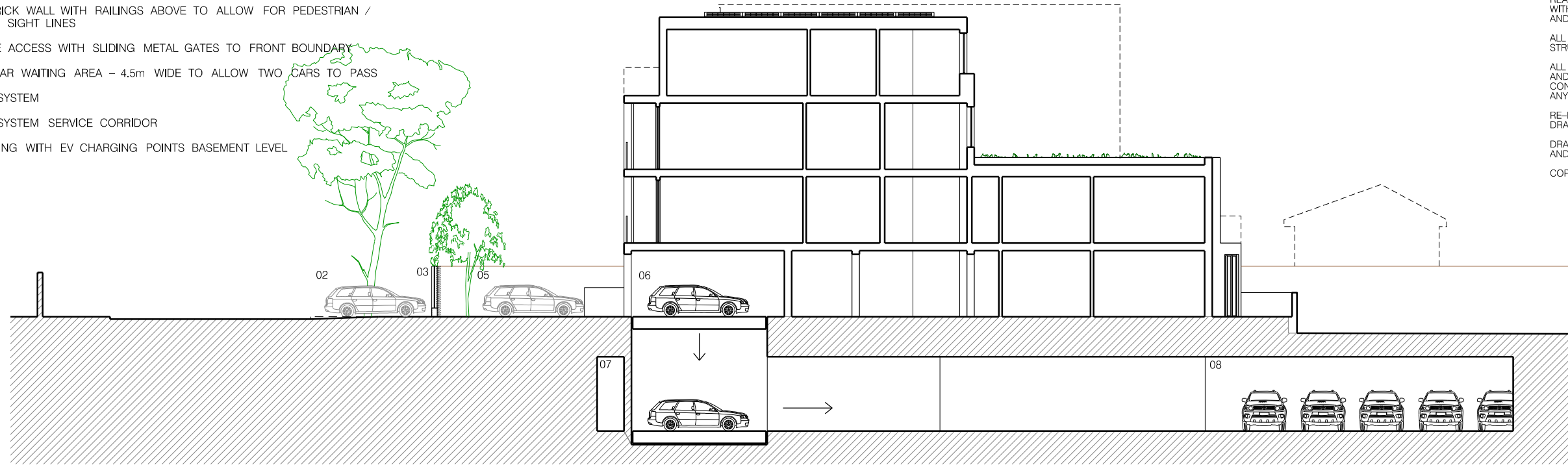


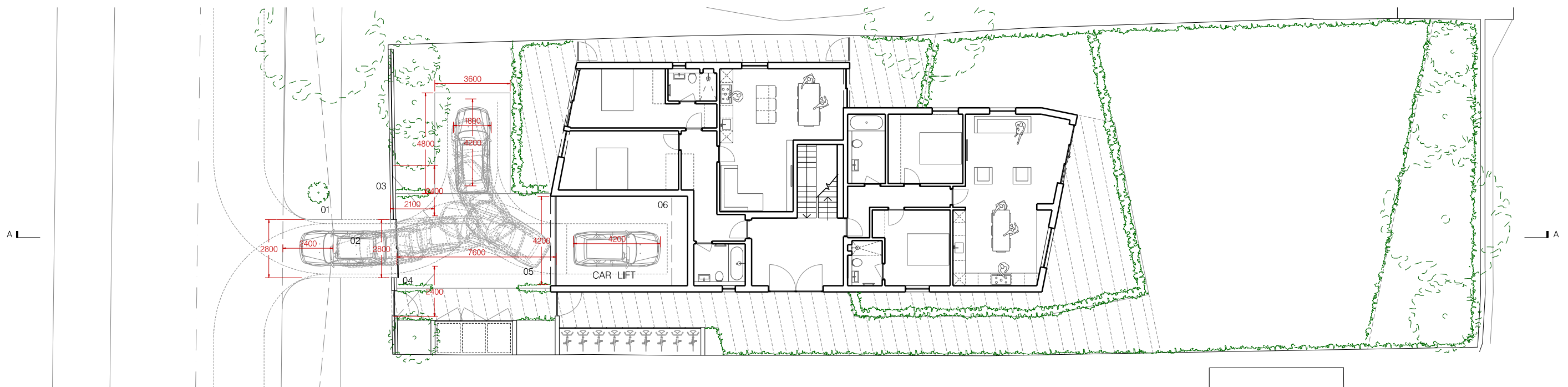
NOTES:

- 01 DROPPED KERB WITH VISIBILITY SPLAY SET 2.4 METRES AWAY FROM EDGE OF HIGHWAY
- 02 CAR WAITING AREA 1
- 03 300mm BRICK WALL WITH RAILINGS ABOVE TO ALLOW FOR PEDESTRIAN / VEHICULAR SIGHT LINES
- 04 2.8m WIDE ACCESS WITH SLIDING METAL GATES TO FRONT BOUNDARY
- 05 ON-SITE CAR WAITING AREA - 4.5m WIDE TO ALLOW TWO CARS TO PASS
- 06 CAR LIFT SYSTEM
- 07 CAR LIFT SYSTEM SERVICE CORRIDOR
- 10 CAR PARKING WITH EV CHARGING POINTS BASEMENT LEVEL

EXISTING INFORMATION PROVIDED BY CLIENT
 ALL WORKS TO BE IN ACCORDANCE WITH CURRENT BUILDING REGULATIONS AND TO BE READ AND CONSTRUCTED IN CONJUNCTION WITH A SCHEDULE OF WORKS DOCUMENT AND STRUCTURAL ENGINEER'S INFORMATION
 ALL DEMOLITION TO BE APPROVED BY STRUCTURAL ENGINEER PRIOR TO COMMENCEMENT
 ALL DIMENSIONS, EXISTING LEVELS, DRAIN RUNS AND SITE CONDITIONS TO BE VERIFIED ON SITE BY CONTRACTOR PRIOR TO CONSTRUCTION, AND ANY DISCREPANCIES MADE KNOWN
 RE-ROUTING OF EXISTING AND RUNNING OF NEW DRAINAGE TO BE TO CONTRACTOR'S DESIGN
 DRAWINGS ARE FOR PLANNING PURPOSES ONLY AND ARE NOT ISSUED FOR CONSTRUCTION
 COPYRIGHT FLOWER MICHELIN LLP 2017



SECTION AA



GROUND FLOOR PLAN

- Rev. G Drawing revised to Case Officer comments.
- Rev. F Dimensions Shown To Car To Highways Comments
- Rev. E Sweep Path Shown To Highways Comments
- Rev. D Disabled parking space turning area/sweep path shown
- Rev. C Drawing revised to Case Officer comments.
- Rev. B Drawing revised to Case Officer comments.
- Rev. A Drawing revised to show PV panels to roof

