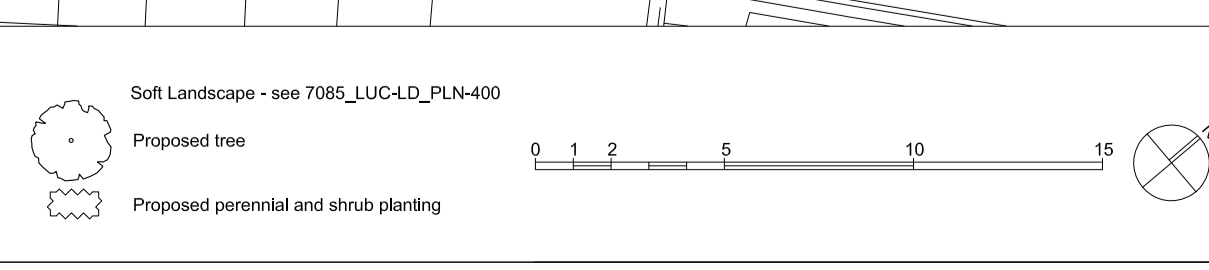


LUC
 Originator
 43 Chalton Street, London, NW1 1JD
 +44 (0)20 7383 5784
 london@landuse.co.uk
 www.landuse.co.uk

Iss	Date	Description	Drn	Chk
15	171112	for Planning, incorporating planning feedback	JB	EP
14	171207	for Stage 3	JB	EP
13	171121	for Planning	JB	EP
12	171030	Building update	JB	EP
11	171023	Building update, parking bays revised	JB	EP
10	170927	Revision to Water St	JB	EP

Notes
 Do not scale from this drawing
 All dimensions are drawn in millimeters
 Drawing & design copyright LUC
 Reproduction of this drawing in whole or in part is prohibited without prior permission.

- Outline Specification References - see 7085_LUC-LD_PLN-200
- P1 Natural stone paving
 - P2 Natural stone setts
 - P3 Resin bound gravel
 - P4 Natural stone steps
 - P5 Boulders
 - W1 Masonry wall
 - W2 Steel balustrade
 - K1 Natural stone flat channel kerb
 - F1 Curved Bench
 - F2 Bench / seat
 - F3 Bin
 - F4 Bicycle stand
 - F5 Handrail
 - L1 See 7085_LUC-LD_PLN-201



Project / Client
Twickenham Rediscovered Programme
 for London Borough of Richmond Upon Thames

Scale @ A1
 1:200

Status
 for Planning

Drawing Title / Client		Job Nr	Drawing Nr	Issue
Landscape & Public Realm General Arrangement		7085	LUC-LD_PLN 101	15