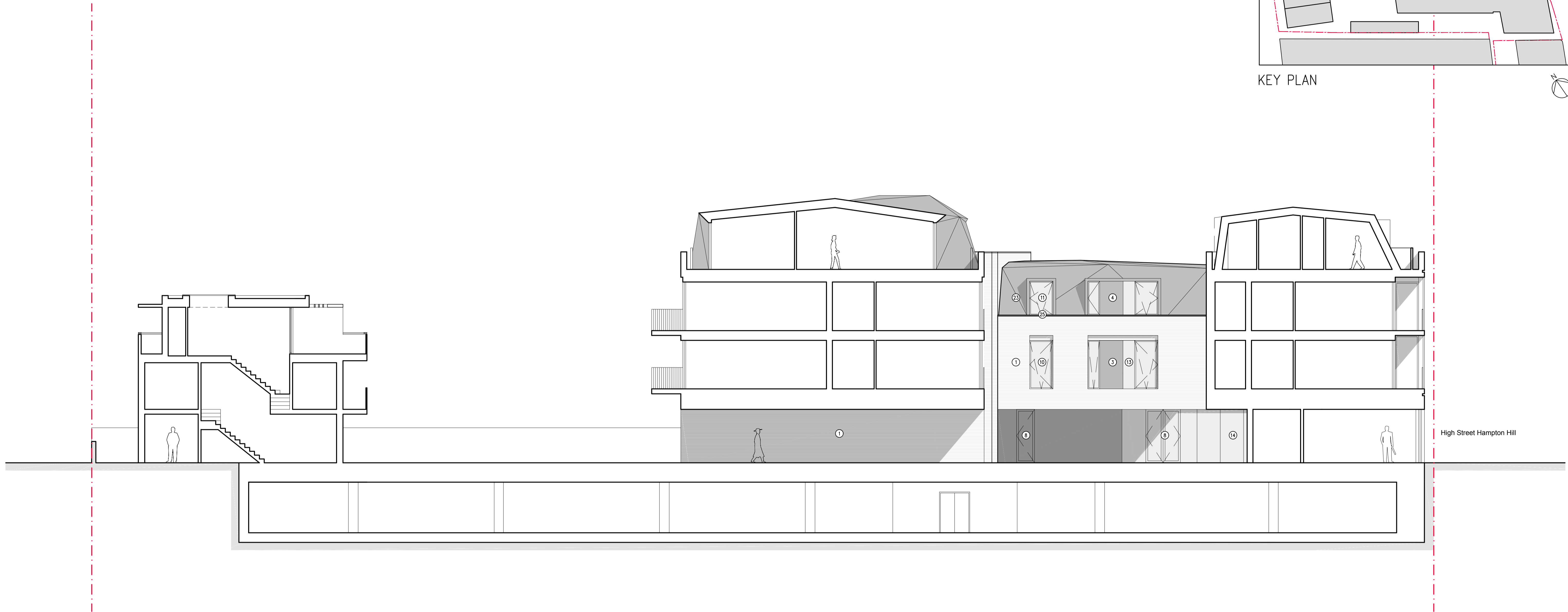


KEY PLAN



High Street Hampton Hill

**F** PROPOSED SECTION F  
(20)P00 SCALE: 1:100 (A1)

Material description:

Walls:

- ① Yellow fair faced brick in stretcher bond. Final type / colour and mortar colour subject of submission and approval by LPA
- ② White render
- ③ Cladding - TECU Classic Copper
- ④ Cladding - TECU Classic Copper (roof level)
- ⑤ Fixed louvered cladding - TECU Classic Copper (town houses)
- ⑥ Fixed louvered cladding - TECU Classic Copper (roof level)
- ⑦ Shopfront signage zone and cladding - TECU Bronze

Doors & Windows:

- ⑧ Double glazed doors - Copper anodised aluminium frames
- ⑨ Double glazed doors - Copper anodised aluminium frames (roof level)
- ⑩ Double glazed tilt and turn windows - Copper anodised aluminium frames
- ⑪ Double glazed tilt and turn windows - Copper anodised aluminium (roof level)
- ⑫ Double glazed sliding doors - Copper anodised aluminium frame
- ⑬ Fixed frameless double glazed windows
- ⑭ Low ion toughened laminated shopfront glazing
- ⑮ Double glazed sliding rooflight lantern
- ⑯ Copper anodised roller shutter

- ⑰ Double glazed obscured windows - Copper anodised aluminium frames
- ⑱ Projecting window with opaque glazing panel and angled clear panel

Privacy Screens:

- ⑲ Sliding louvered privacy screens - Copper anodised aluminium
- ⑳ Sliding louvered privacy screens - Copper anodised aluminium (roof level)
- ㉑ Opaque toughened laminated glass privacy screens

Balustrading:

- ⑲ Toughened laminated glass balustrades
  - ㉒ Recessed balconies with copper coloured metal balustrades
  - ㉓ Juliet balconies with copper coloured metal balustrades
  - ㉔ Balcony, copper coloured metal balustrades - Tecu Classic Copper cladding
- Roofs:
- ㉕ TECU Classic Copper cladding with integrated photovoltaics
  - ㉖ TECU Classic Copper cladding for town houses
  - ㉗ TECU Classic Copper Flashing
  - ㉘ Sedum green roof finish

Canopies and Soffits:

- ㉙ Canopies - with white rendered fascias and soffits with TECU Classic copper flashing and roofs
- ㉚ Soffit to recessed balconies - white render

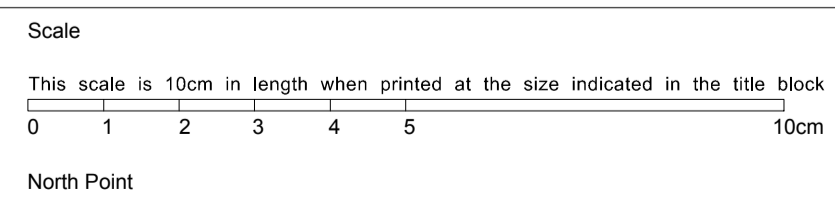
Terraces:

- ㉛ Stone ( Refer to landscape proposals)
- ㉜ Composite timber decking ( Refer to landscape proposals)

NOTES  
 1 The Contractor must check and confirm all dimensions  
 2 All discrepancies must be reported and resolved by the Architect before works commence  
 3 This drawing is not to be scaled  
 4 All work and materials to be in accordance with current applicable Statutory Legislation and to comply with all relevant Codes of Practice and British Standards

Copyright Rolfe Judd Ltd

Key Plan



Rev continued

Date

Revision	Date
- Preliminary Drawing Issue	30/06/17
A Preliminary Drawing Issue	21/07/17
B Preliminary Issue	03/08/17
P1 Planning Issue	31/08/17
P2 Townhouse terrace omitted as LPA request	29/01/18

Client

Greatplanet Limited

Project

63 - 71 High Street

Hampton Hill

Drawing

Proposed Section F

Scale

1:100 (A1)

Date

Jun 17

Status

Planning

Job Number

5903 T(20) E06

Revision

P2

**Rolfe Judd**

Architecture Planning Interiors

Old Church Court, Claylands Road, The Oval, London SW8 1NZ

T 020 7556 1500

www.rolfe-judd.co.uk

G:\6903\T\_Series\T20\T20E06