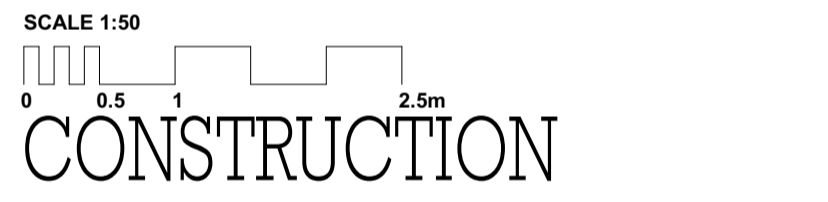
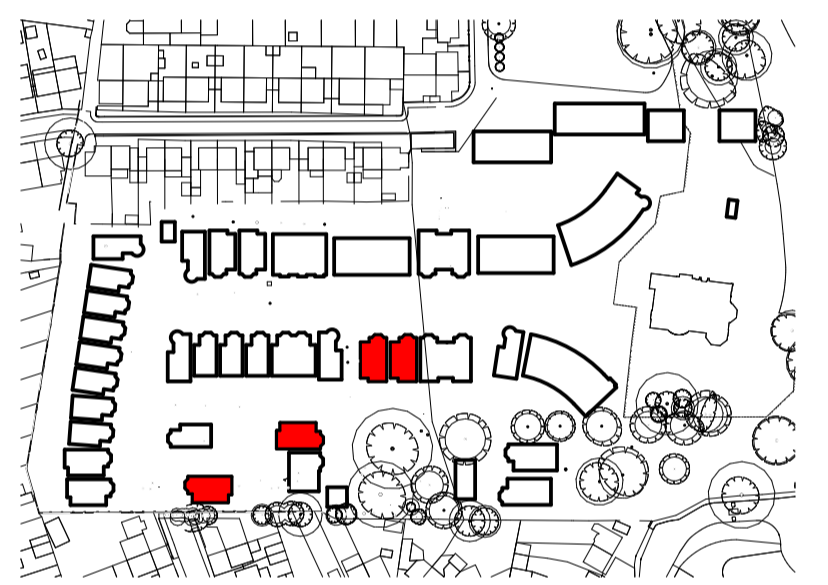


For wall type build-ups see dwg 4721\_4\_341  
 Note: wall type IWT-3 is 75mm timber stud - where metal stud are to be substituted, set wall out to centre line

**GENERAL NOTES**  
 Drawing to be read in conjunction with engineers and other specialist drawings.  
 All dimensions are structural and must be checked on site.  
 For structural, civil and sub-surface drainage information see engineer's drawings.  
 For building services see mechanical and electrical drawings.  
 All areas are approximate.

**ENGINEERING NOTES**  
 MJ - Movement joint  
 MJ1 - Movement joint  
 BJR - Brick joint reinforcement  
 BJR 1 - Brick joint reinforcement

**HOUSE NUMBERS - TYPE E2**  
 H54-H55, H66 & H70  
 4 Units total



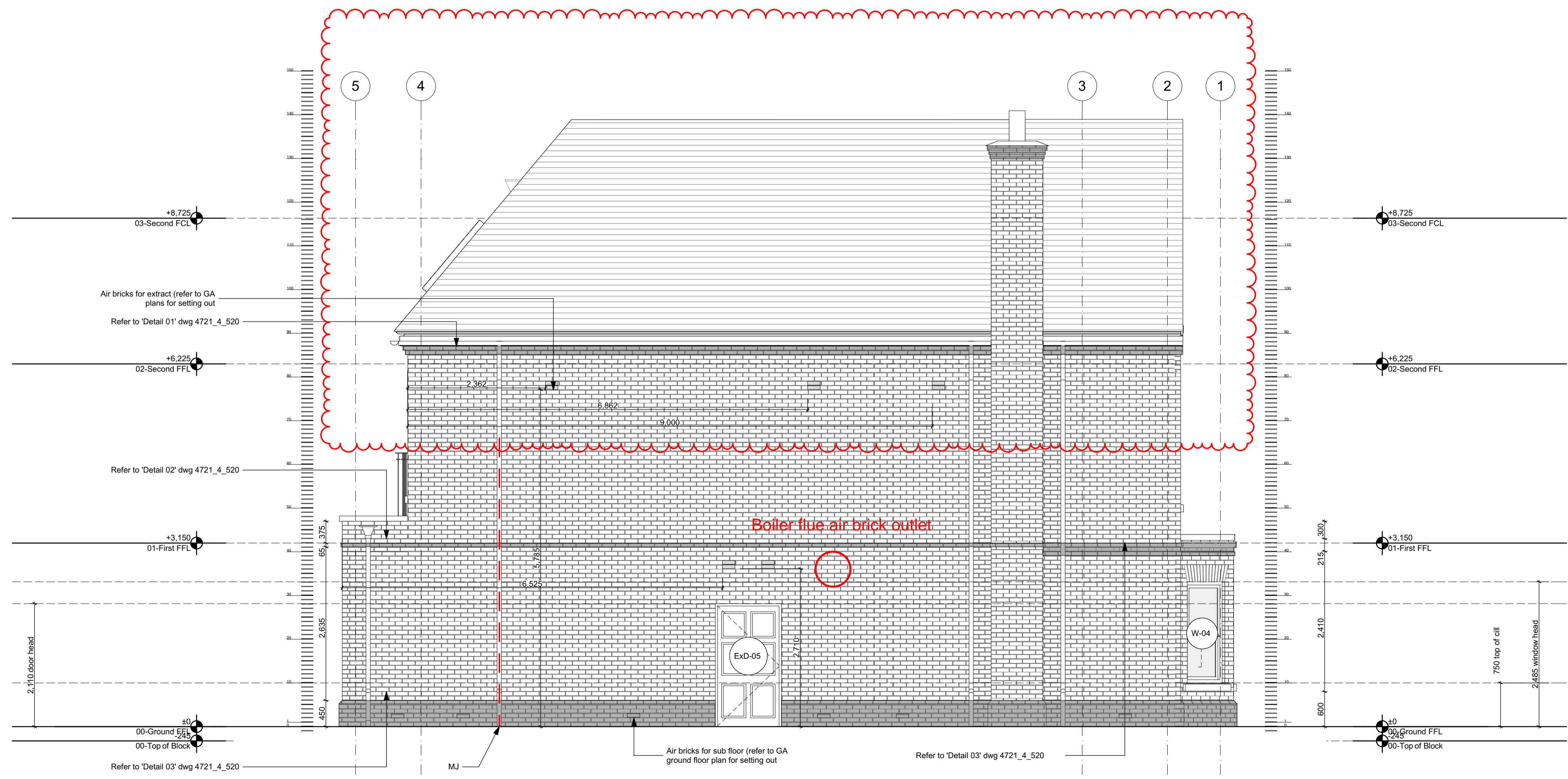
Rev	Description	Issued	Drawn	CHK
P2	M+E Updates, Pre-Plan Issue	18/03/2016	MP	SC
C1	Sections updated to show superstructure	30/09/2016	MP	SC
C3	FF window omitted	27/11/2017	MBe	TL
C4	RT-1, RT-2 updated and external electrical service removed	23/02/2018	MBe	PN

Client  
**Berkeley Homes West London**  
 Project  
**Latchmere House**  
 Church Road, Richmond TW10 5HH  
 and  
 Latchmere Lane, Kingston KT2 5NX

Drawing  
**House Type E2 Flank Elevations**

Scale	Date	Drawn	Checked
1:50 @ A1	Jan '16	MP	SC

**Brookes Architects**  
 Upstairs at The Grange, Bank Lane,  
 London SW15 5JT  
 T 020 8487 1223  
 F 020 8876 4172  
 E info@brookesarchitects.co.uk  
 www.brookesarchitects.co.uk



Drawing No.	Rev No.
4721   4   291   C4	