

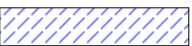
For wall type build-ups see dwg 4721_4_341
 Note: wall type IWT-3 is 75mm timber stud - where metal stud are to be substituted, set wall out to centre line

GENERAL NOTES
 Drawing to be read in conjunction with engineers and other specialist drawings.
 All dimensions are structural and must be checked on site.
 For structural, civil and sub-surface drainage information see engineer's drawings.
 For building services see mechanical and electrical drawings.
 All areas are approximate.

VENTILATION NOTES
 Sub-floor ventilation to provide a minimum of 500mm²/m² of floor area, or 1500mm²/m of external wall (whichever is greater).
 Air bricks providing 6500m² of ventilation assumed in calculation.

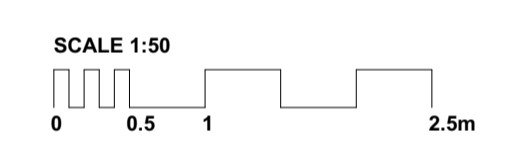
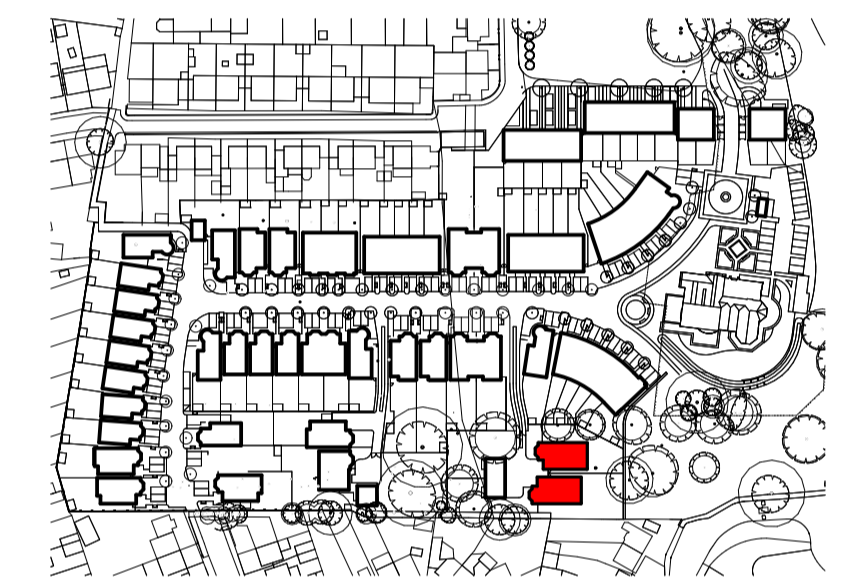
INCOMING SERVICES
 All incoming services TBC. Current assumptions provided by M+E engineer.

Electric — E — E — E —
 Fibre/data — BT — BT — BT —
 Gas — G — G — G —
 Water — W — W — W —

LIFETIME HOMES NOTES
 All units to be compliant with the Lifetime Homes Criteria
 Bathroom activity areas 
 LT - Level threshold

SETTING OUT NOTES FOR TYPE F1
 Refer to the following drawings for the general site location:
 4721 4 040
 4721 4 041
 Refer to the following drawing for the building setting out:
 4721 4 052

HOUSE NUMBERS - TYPE F1
 H64 & H65 (handed)
 2 Units total



CONSTRUCTION

C3	Notes and dimensions added	01/12/2017	MBe	TL
C2	Roof and internal layout amended	20/01/2017	MBe	NL
C1	Construction Issue	25/10/2016	SC	SC
Rev	Description	Issued	Dwn	Chk

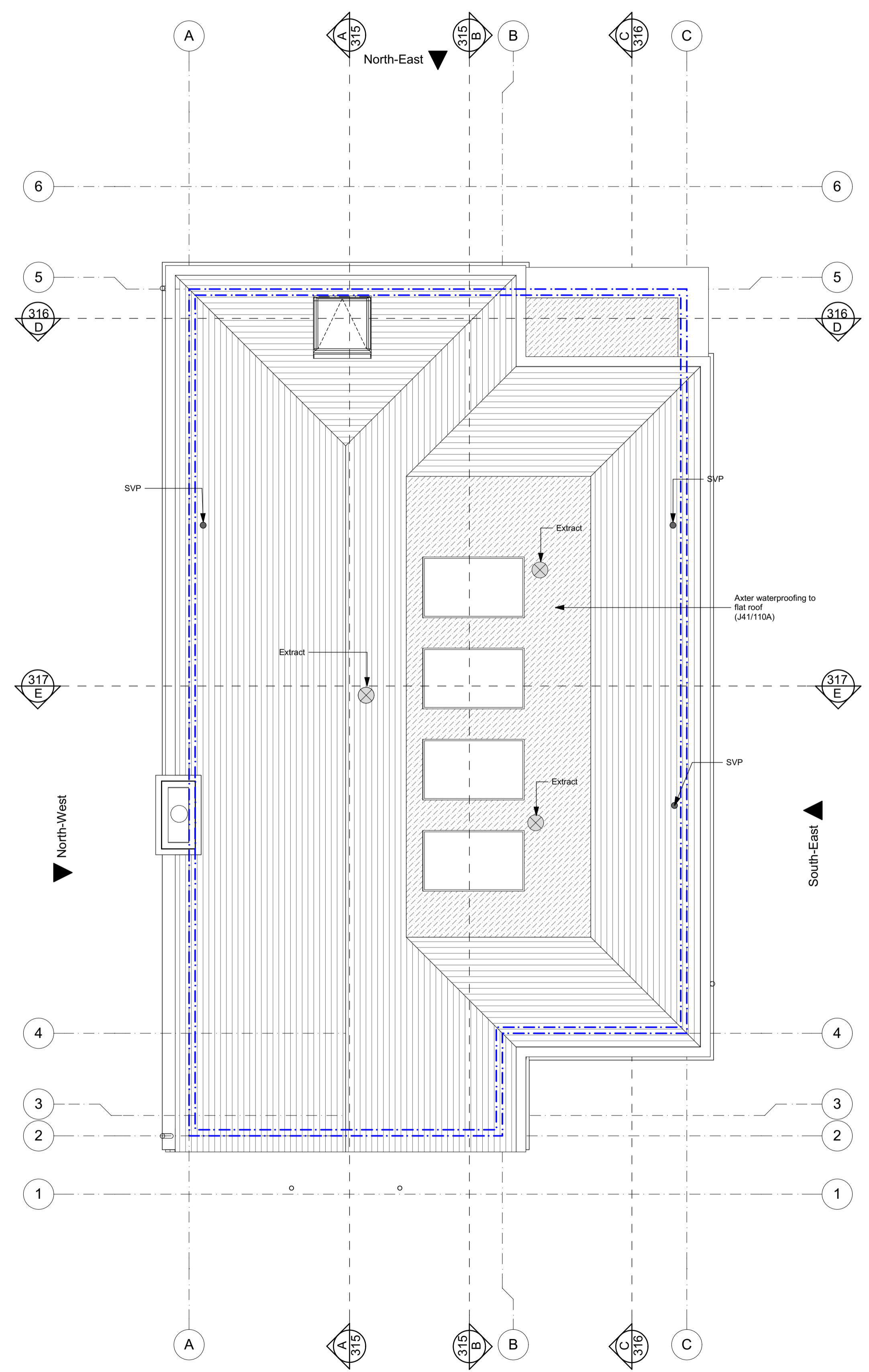
Client
Berkeley Homes West London

Project
Latchmere House
Church Road, Richmond TW10 5HH
and
Latchmere Lane, Kingston KT2 5NX

Drawing
House Type F1 Roof Plan

Scale	Date	Drawn	Checked
1:50 @ A1	Feb '16	MP	SC

Brookes Architects
 Upstairs at The Grange, Bank Lane,
 London SW15 5JT
 T 020 8487 1223
 F 020 8876 4172
 E info@brookesarchitects.co.uk
 www.brookesarchitects.co.uk



Drawing No.	Rev No.
4721 4 302	C3