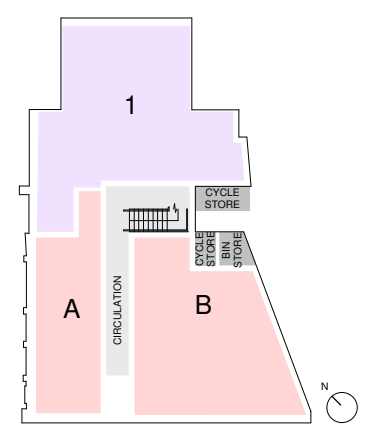


- KEY**
- APPLICATION BOUNDARY
 - ENTRANCE / ACCESS ROUTE
 - FFL 5.00 FINISH FLOOR LEVEL
 - + 5.00 SPOT HEIGHTS
 - HOPPER
 - LP LAMP POST
 - F FRIDGE FREEZER
 - WM WASHING MACHINE
 - DW DISH WASHER
 - EXISTING STRUCTURE
 - PROPOSED STRUCTURE

KEY PLAN



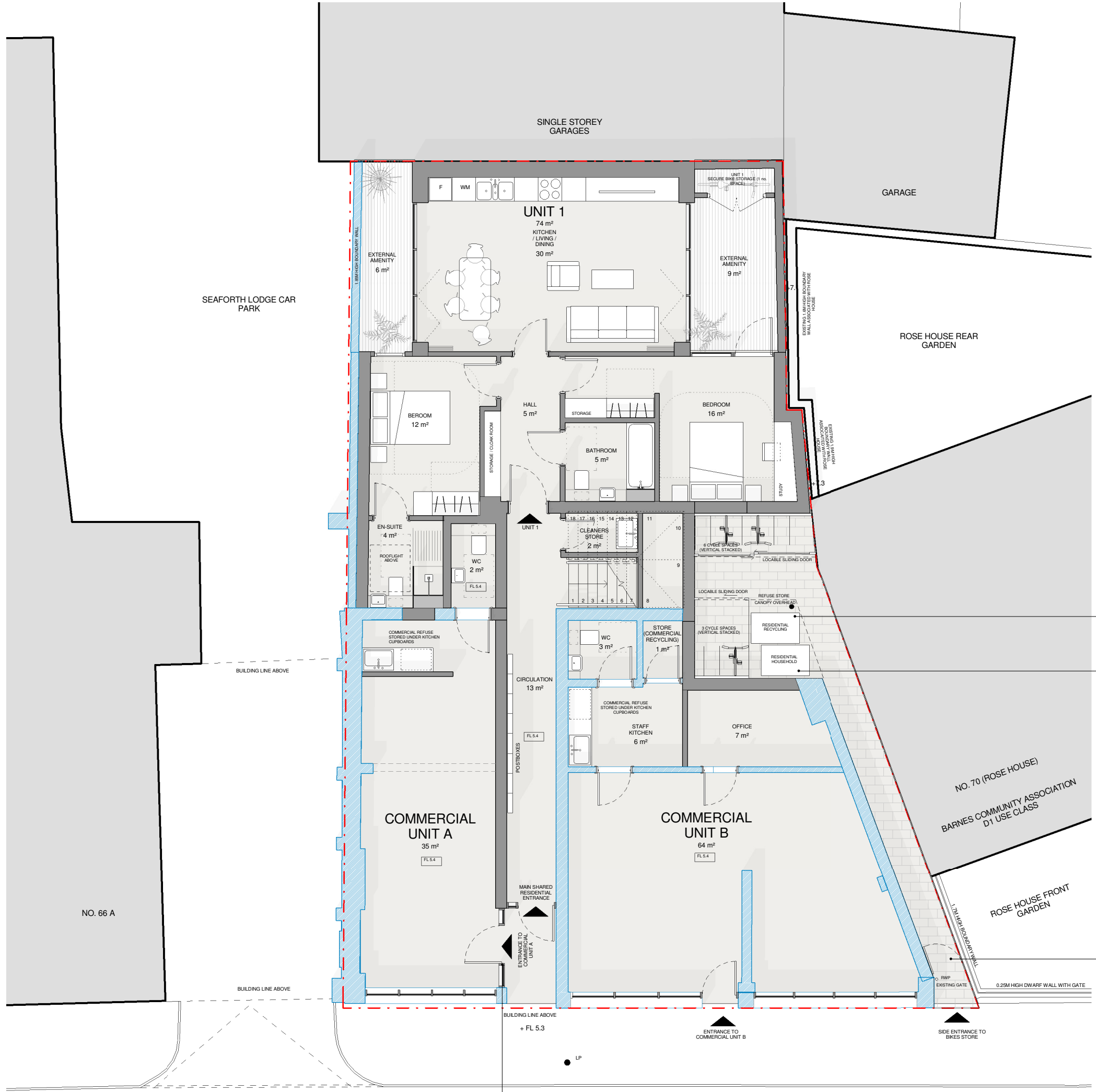
Unit Type	Name	Area	Unit Size
Residential	UNIT 1	75 m ²	2B4P

Unit Type	Name	Area	Unit size
Commercial	A	64 m ²	N/A
Commercial	B	35 m ²	N/A

COMMUNAL HOUSEHOLD WASTE REFUSE:
660 Litre - 1190 (H) X 1220 (W) X 770 (D)

COMMUNAL RECYCLING
770Litre - 1360 (H) x 1220 (W) x 770 (D)

note: These are based on policy 1.3.2, 1.4.2 and 3.2 of the refuse and recycling storage requirements SPD



NO. 70 (ROSE HOUSE)
BARNES COMMUNITY ASSOCIATION
D1 USE CLASS

ROSE HOUSE FRONT GARDEN

EXISTING GATE TO ACCOMMODATE WIDTH OF WHEELIE BINS MIN 770MM

BARNES HIGH STREET

REVISION	NOTE	DATE	DRAWN
A	DRAWING UPDATED FOLLOWING COMMENTS	20/03/18	JH



PROJECT	67-69 BARNES HIGH STREET
DRAWING TITLE	PROPOSED LEVEL 0 FLOOR PLAN
DATE	SEPT 17
SCALE	1:100 @A3
DRAWN	JR
CHECK	CS
STATUS	PLANNING
JOB NUMBER	AI - 2296
DRAWING NUMBER	BRN - 100
REV	A