

IMPERMEABLE brick PAVING

PERMEABLE brick PAVING

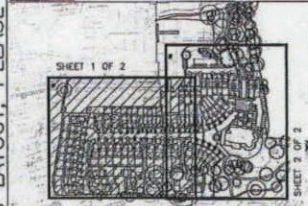
TARMA C

COPYRIGHT RESERVED

GENERAL NOTES
 1. THIS DRAWING IS TO BE READ IN CONJUNCTION WITH THE ARCHITECTS, SPECIALISTS AND ENGINEERS DRAWINGS AND SPECIFICATIONS. ANY DISCREPANCIES ARE TO BE REPORTED TO THE ARCHITECT/ENGINEER IMMEDIATELY.

- KEY:
- 100-1 IMPERMEABLE VEHICULAR ACCESS DENSE BITUMINOUS MACADAM
 - 100-2 IMPERMEABLE VEHICULAR ACCESS 200x100x20mm TEGULA MARSHALLS PENNANT GREY, KERBSIDE BOND
 - 100-3 PERMEABLE FINISH VEHICULAR ACCESS 200x100x20mm TEGULA MARSHALLS PENNANT GREY, KERBSIDE BOND
 - 100-4 IMPERMEABLE VEHICULAR ACCESS 200x100x20mm TEGULA MARSHALLS PENNANT GREY, KERBSIDE BOND
 - 100-5 IMPERMEABLE FINISH PAVEMENT 100x100x20mm TEGULA MARSHALLS PENNANT GREY, KERBSIDE BOND
 - 100-6 GRANULE STRECH - GRANITE SILEX 100x100x20mm, STACK BONDED L16 DARK GREY
 - 100-7 IMPERMEABLE FOOTWAY DENSE SURFACE COURSE MACADAM
 - 100-8 IMPERMEABLE SURFACE FINISH BASIS 200x100x20mm STRETCHER BOND
 - 100-9 IMPERMEABLE FINISH FOOTWAYS SURFACE FINISH BASIS 400x100x100mm, OFFSET STRETCHER BOND
 - 100-10 IMPERMEABLE GARDEN PATIOS 400x100x20mm PERFECTION MARSHALLS BUFF STACK BOND
 - 100-11 SELF-DRAINING GRANITE SILIX SILEX CLASS 1 SURFACE SILIX 100mm

TENDER ISSUE



LATEST REVISIONS ARE 'TAGGED' WITH THIS INDICATOR. HOWEVER, ALL USERS OF THIS DRAWING MUST VERIFY THEMSELVES OF ALL REVISIONS TO ANY PREVIOUS EDITIONS, BY COMPARISON OF THIS DRAWING AGAINST OTHER EDITIONS, AS IT CANNOT BE GUARANTEED THAT EVERY ITEM OF REVISION HAS BEEN 'TAGGED'.

Rev	Date	Description	By	Checked
A	27.05.16	EXTERNAL FINISHES LAYOUT REVISION FOR PHASE 1 (SEE CLOSER FOR CLARITY)	RM	JCH
Revisions				
Date	05.02.16	FIRST ISSUE	AZA	SC

FOR CONTINUATION OF EXTERNAL FINISHES LAYOUT, PLEASE SEE DRAWING No 1509/03/04

LATCHMERE HOUSE

Title
EXTERNAL FINISHES LAYOUT
 SHEET 1 OF 2

Client
BERKELEY HOMES (WEST LONDON) LIMITED

Architect
BROOKES ARCHITECTS

RLT
 RLT CONSULTANTS
 CONSULTANTS LTD
 11, GILDED TOWER
 11 GILDED TOWER
 11 GILDED TOWER
 11 GILDED TOWER
 11 GILDED TOWER

Dwg No. 1509/03/03 Scales: 1:250 @ A1 Rev: A