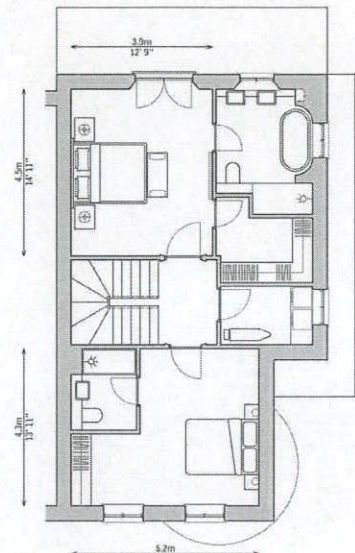
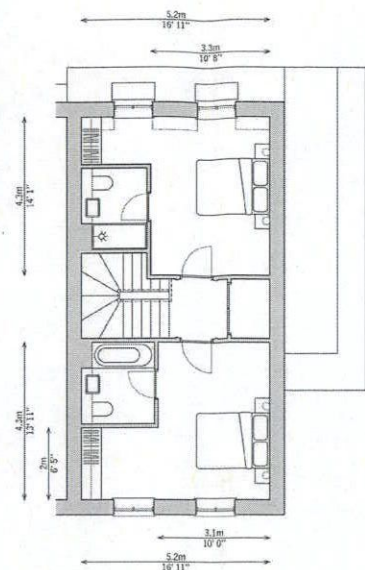


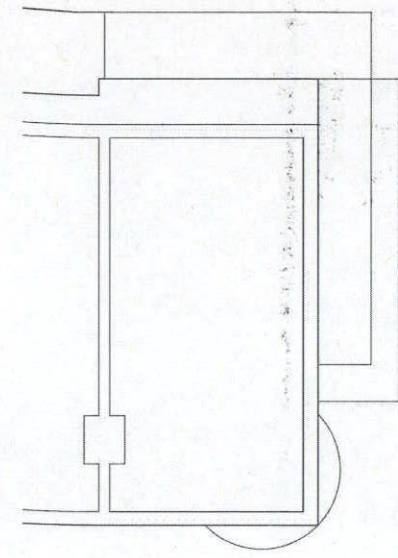
GROUND FLOOR PLAN



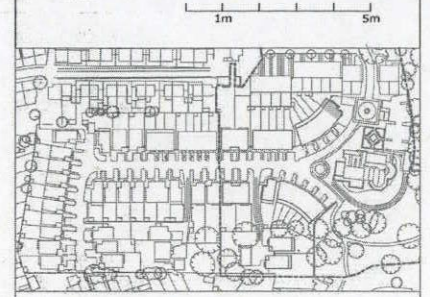
FIRST FLOOR PLAN



SECOND FLOOR PLAN



ROOF PLAN



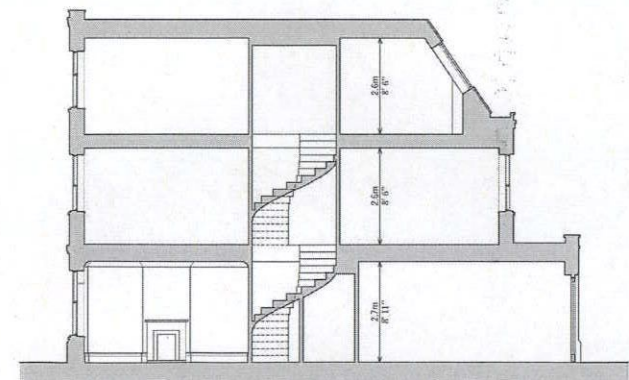
Brookes Architects mark up of agreed planning drawing submission to reflect materials to satisfy planning condition NS04

Roof tiles - Redland plain tile - slate grey
Windows - White finished timber



REAR ELEVATION

Soffits and Fascia - White finished timber



SECTION

Window cills - Cast stone - portland



STREET ELEVATION

Facing brickwork - Freshfield lane, rural facing multi

Joint colour - natural
Joint type - bucket handle



SIDE ELEVATION

LATCHMERE HOUSE	1:100 @A1 1:200 @A3 JAN 2016
PLANS, SECTIONS AND ELEVATIONS	drawing no. rev.
HOUSE TYPE B3	BKH04-P-201 01