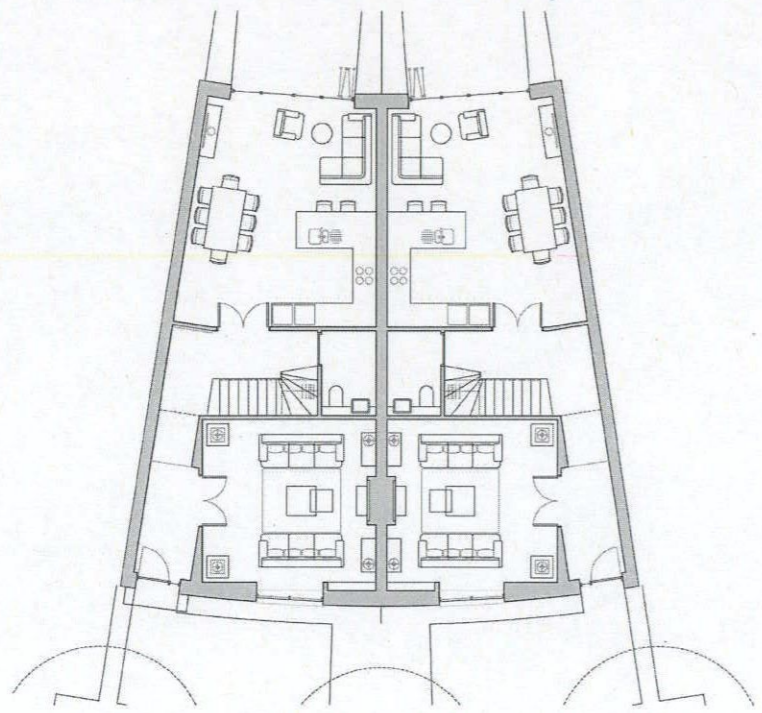
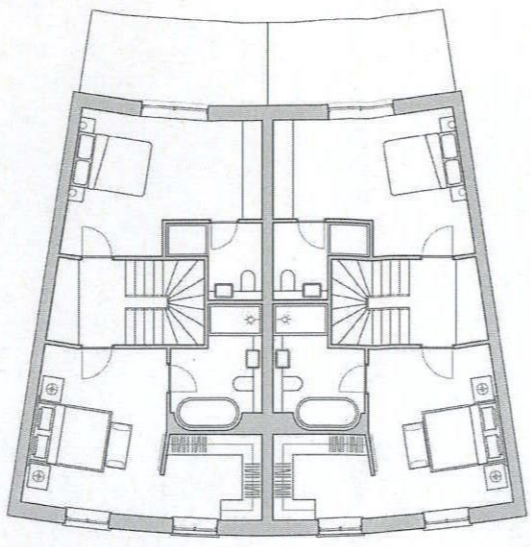


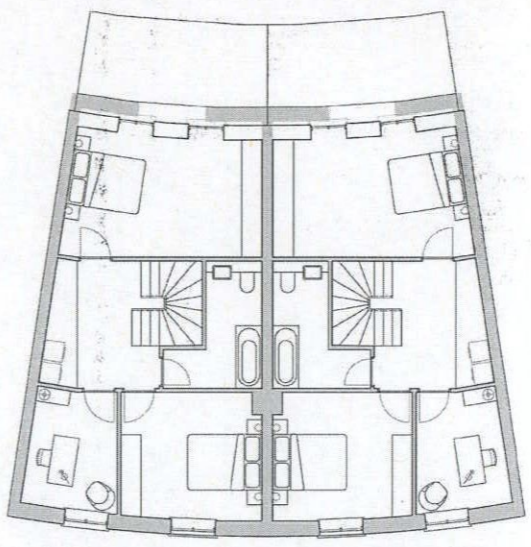
Brookes Architects mark up of agreed planning drawing submission to reflect materials to satisfy planning condition NS04



GROUND FLOOR PLAN



FIRST FLOOR PLAN

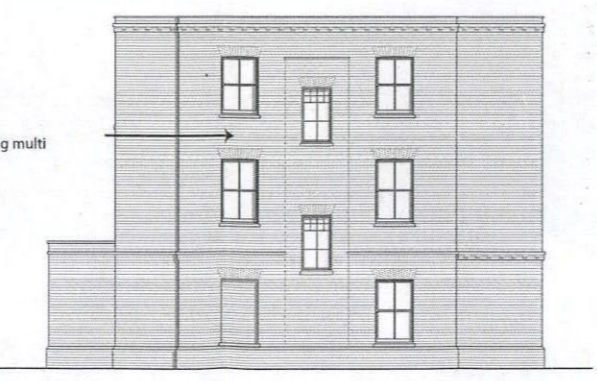


SECOND FLOOR PLAN



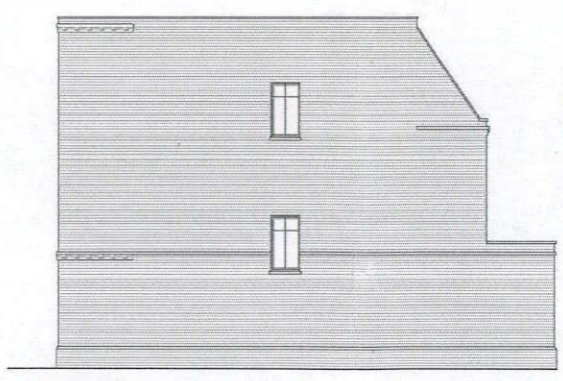
Plot H.60
REAR ELEVATION

Roof tiles - Redland plain tile - slate grey
Soffits and Fascia - White finished timber



SIDE ELEVATION (Plot H.60)

Facing brickwork - Freshfield lane, rural facing multi



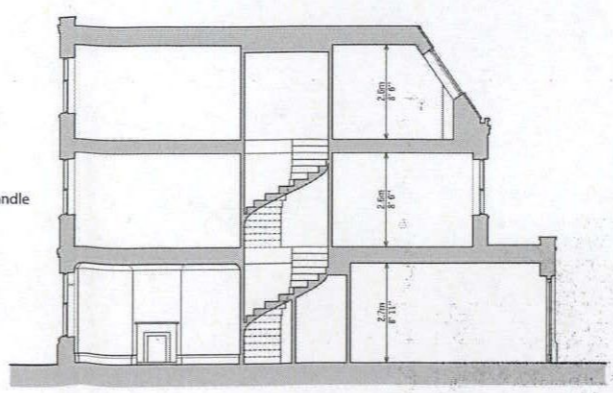
SIDE ELEVATION (typical)



Plot H.60
STREET ELEVATION

Windows - White finished timber
Window cils - Cast stone - portland

Joint colour - natural
Joint type - bucket handle



SECTION

LATCHMERE HOUSE	1:100 @A1 1:200 @A3 JAN 2016
PLANS, SECTIONS AND ELEVATIONS	drawing no. REV.
HOUSE TYPE B4	BKH04-P-201 01