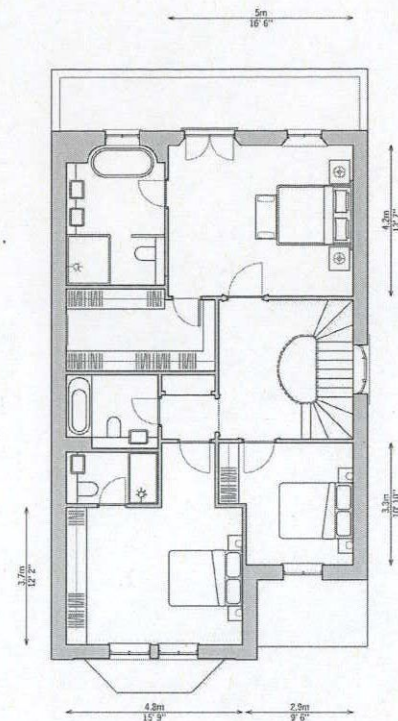
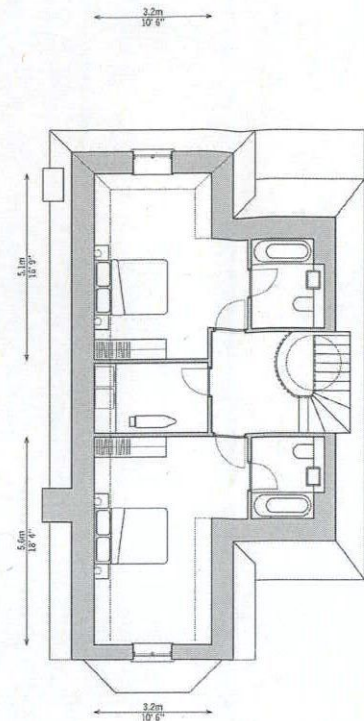


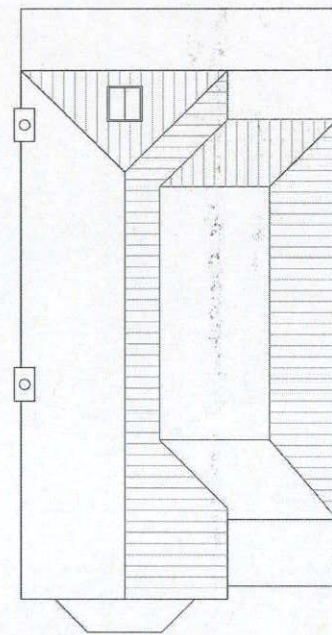
GROUND FLOOR PLAN



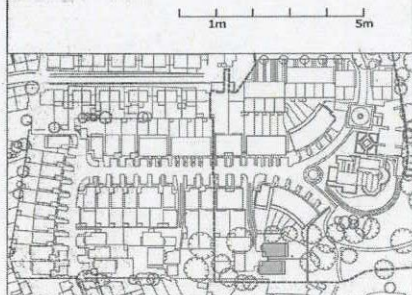
FIRST FLOOR PLAN



SECOND FLOOR PLAN



ROOF PLAN

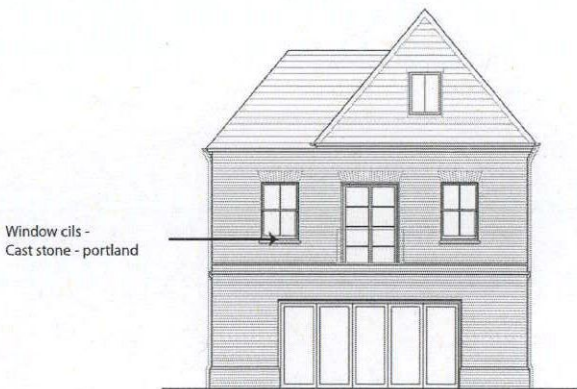


Brookes Architects mark up of agreed planning drawing submission to reflect materials to satisfy planning condition NS04



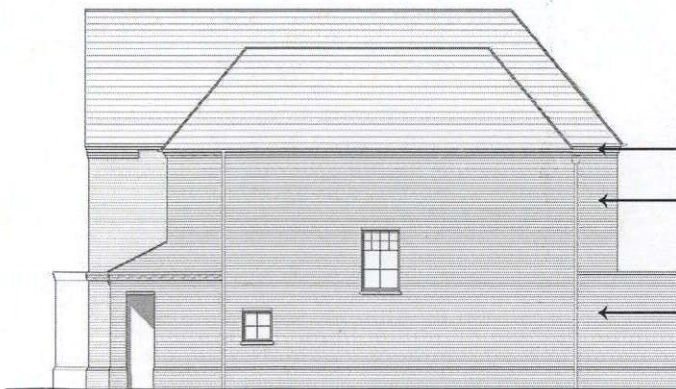
STREET ELEVATION

Windows - White finished timber



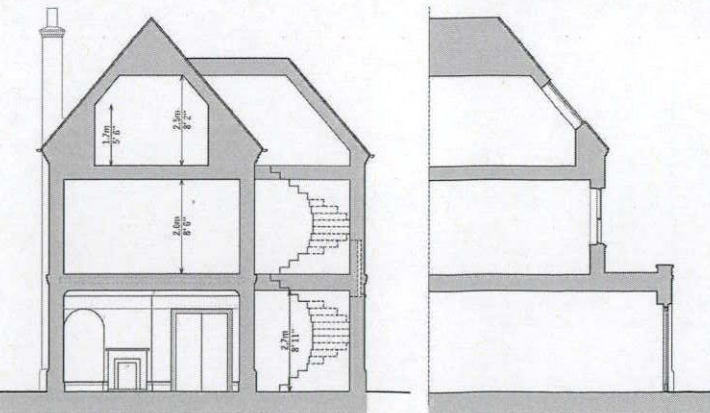
REAR ELEVATION

Window cills - Cast stone - portland



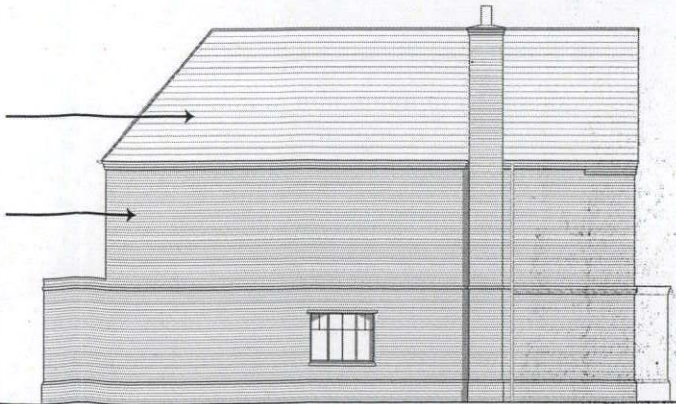
SIDE ELEVATION

Soffits and Fascia - White finished timber
 Joint type - bucket handle
 Joint colour - natural



SECTION

Roof tiles - Redland plain tile - slate grey
 Facing brickwork - Freshfield lane, rural facing multi



SIDE ELEVATION

LATCHMERE HOUSE	1:100 @A1 1:200 @A3 JAN 2016
PLANS, SECTIONS AND ELEVATIONS	drawing no. rev.
HOUSE TYPE F1	BKH04-P-208 01