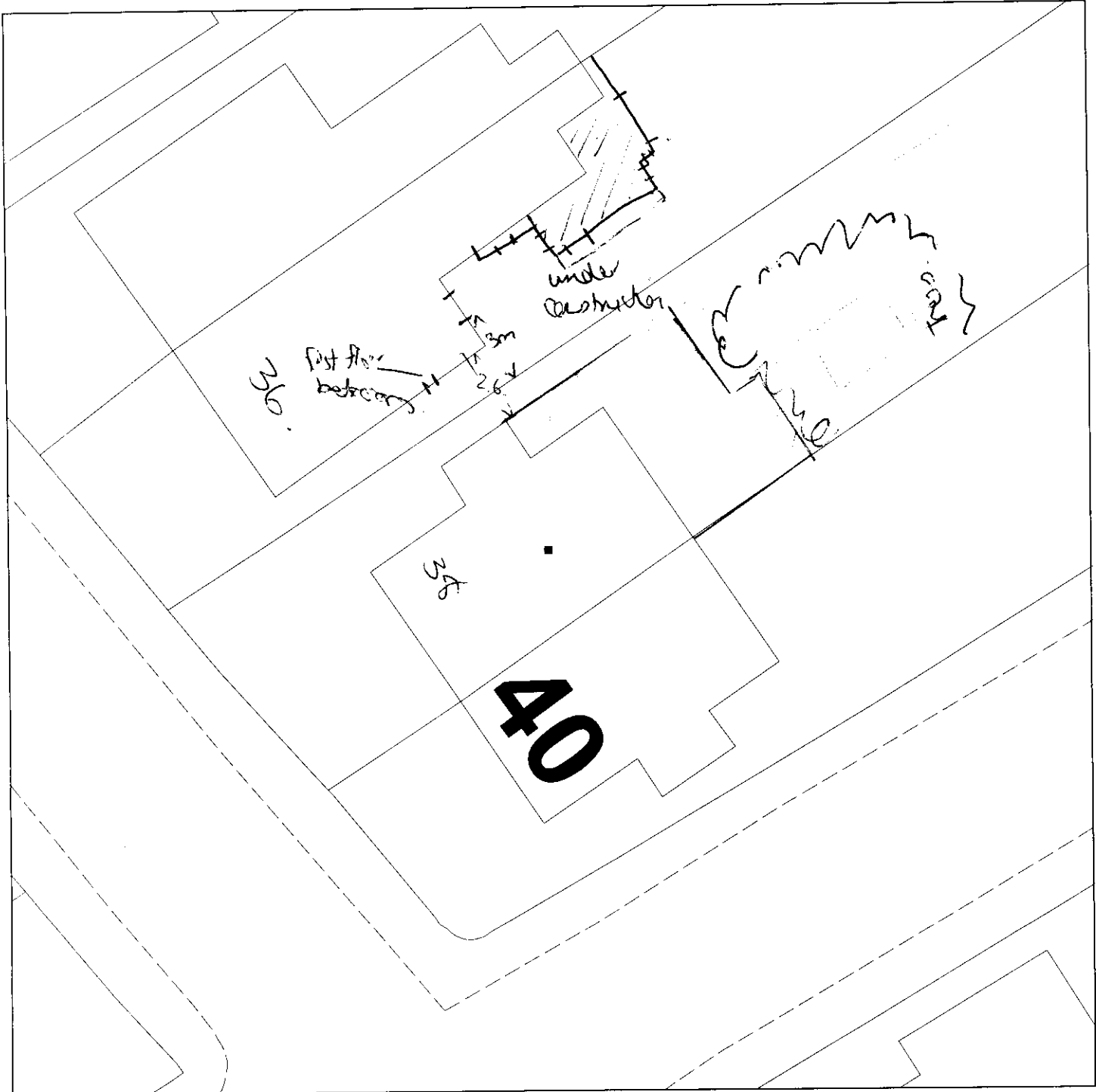


# 38 Mount Ararat Road

06/2105/HOT



GIS by ESRI (UK)



Scale : 1:200

Reproduced from the Ordnance Survey map with the permission of the Controller of Her Majesty's Stationery Office © Crown Copyright 2000.

Unauthorised reproduction infringes Crown Copyright and may lead to prosecution or civil proceedings.

Produced using ESRI (UK)'s MapExplorer 2.0 - <http://www.esriuk.com>

<b>Organisation</b>	London Borough of Richmond Upon Thames
<b>Department</b>	Development control
<b>Comments</b>	
<b>Date</b>	30 June 2006
<b>SLA Number</b>	