

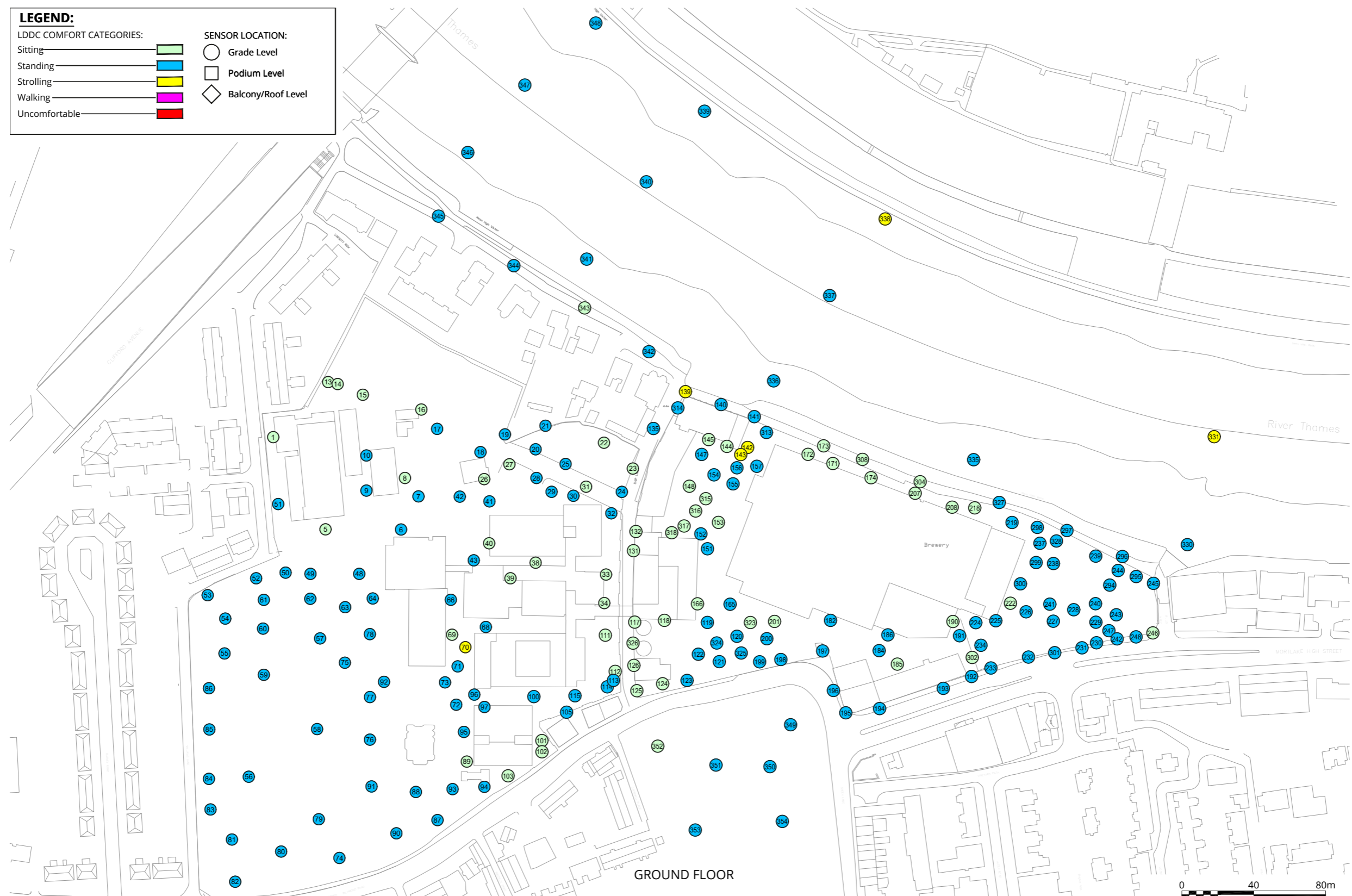
**LEGEND:**

**LDDC COMFORT CATEGORIES:**

- Sitting
- Standing
- Strolling
- Walking
- Uncomfortable

**SENSOR LOCATION:**

- Grade Level
- Podium Level
- Balcony/Roof Level



<b>Project Details</b>	WIE10667-101: Stag Brewery, Mortlake
<b>Figure Title</b>	Figure 17.3: Configuration 1 - Existing Site with existing surrounding buildings (Ground Floor, Windiest Season)
<b>Figure Ref</b>	WIE10667-101_GR_ES_17.3A
<b>Date</b>	2018
<b>File Location</b>	\\s-inc\wiel\projects\wie10667\101\graphics\es\issued figures

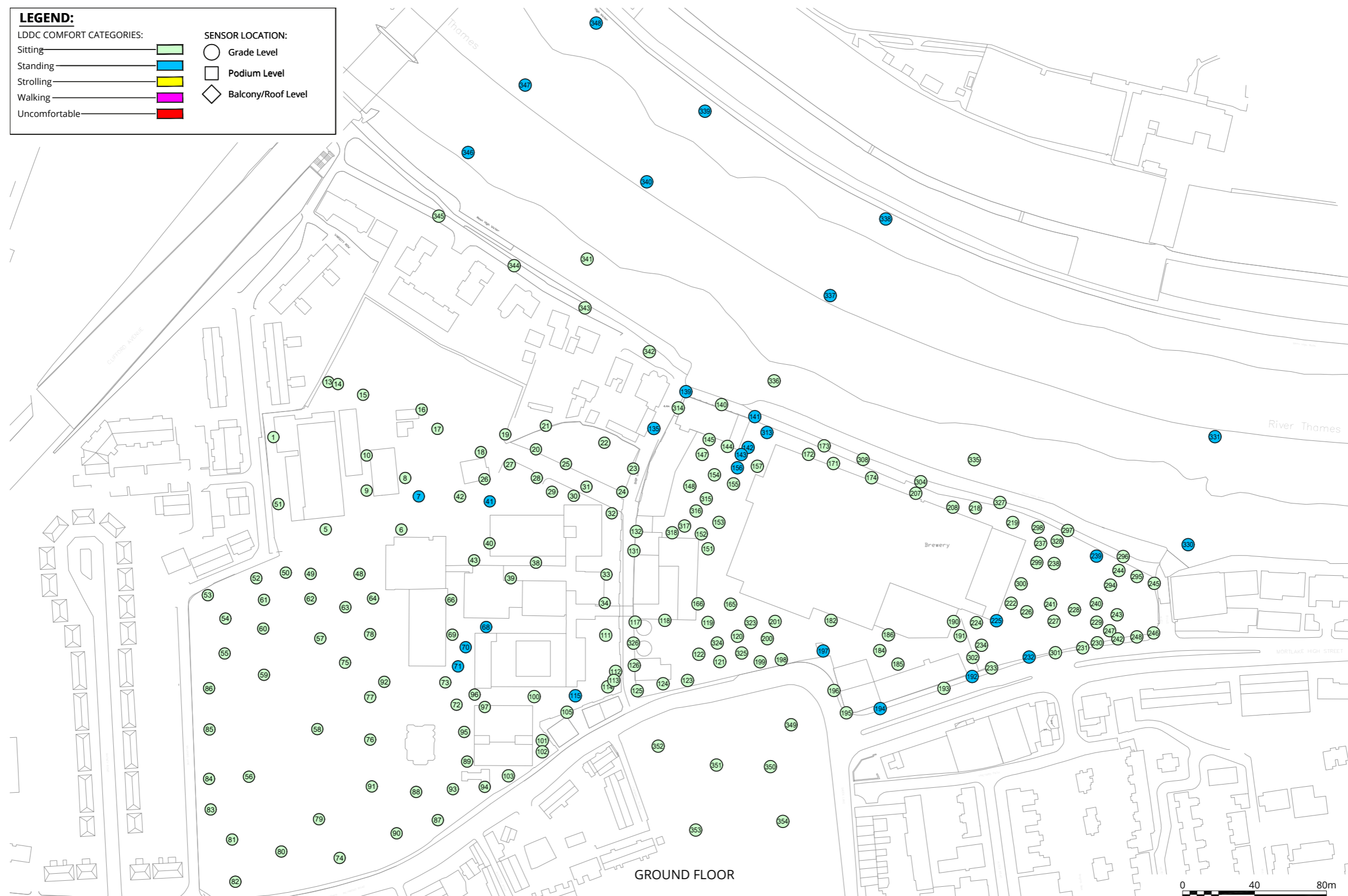
**LEGEND:**

**LDDC COMFORT CATEGORIES:**

- Sitting
- Standing
- Strolling
- Walking
- Uncomfortable

**SENSOR LOCATION:**

- Grade Level
- Podium Level
- Balcony/Roof Level



<b>Project Details</b>	WIE10667-101: Stag Brewery, Mortlake
<b>Figure Title</b>	Figure 17.4: Configuration 1 - Existing Site with existing surrounding buildings (Ground Floor, Summer Season)
<b>Figure Ref</b>	WIE10667-101_GR_ES_17.4A
<b>Date</b>	2018
<b>File Location</b>	\\s-inc\wiel\projects\wiel10667\101\graphics\es\issued figures

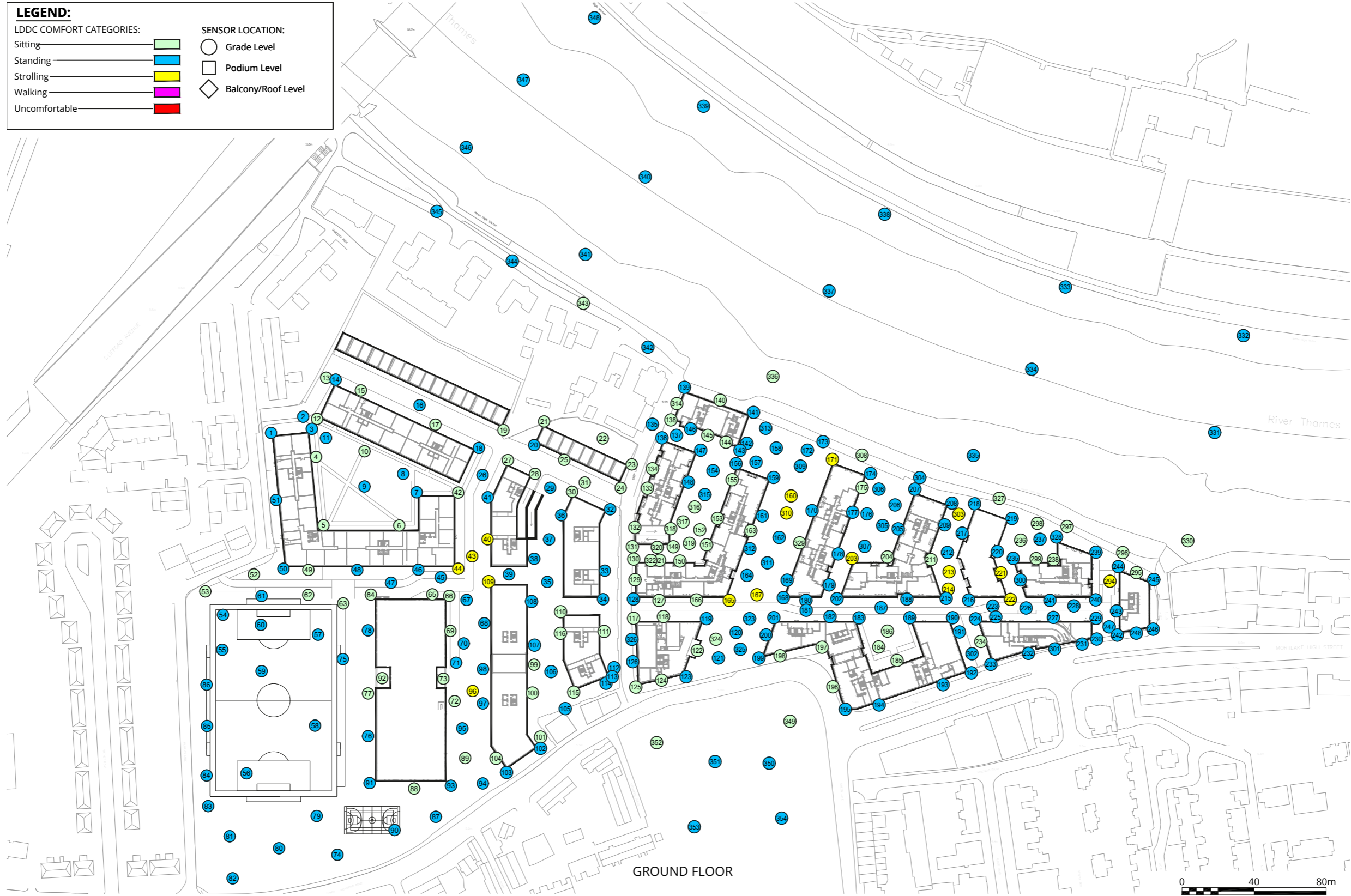
**LEGEND:**

**LDDC COMFORT CATEGORIES:**

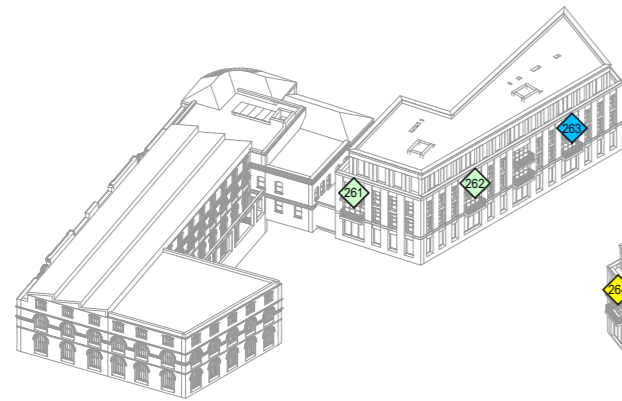
- Sitting
- Standing
- Strolling
- Walking
- Uncomfortable

**SENSOR LOCATION:**

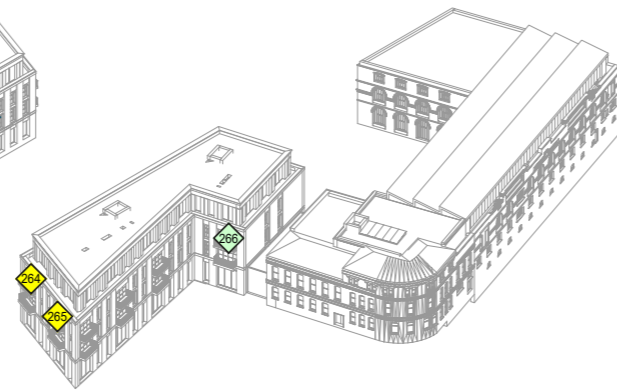
- Grade Level
- Podium Level
- Balcony/Roof Level



<b>Project Details</b>	WIE10667-101: Stag Brewery, Mortlake
<b>Figure Title</b>	Figure 17.5: Configuration 2 - The Development with existing surrounding buildings (Ground Floor, Windiest Season)
<b>Figure Ref</b>	WIE10667-101_GR_ES_17.5A
<b>Date</b>	2018
<b>File Location</b>	\\s-incs\wiel\projects\wie10667\101\graphics\es\issued figures



BLOCK 05/06 NORTH EAST



BLOCK 05/06 SOUTH WEST



BLOCK 11/12 SOUTH EAST



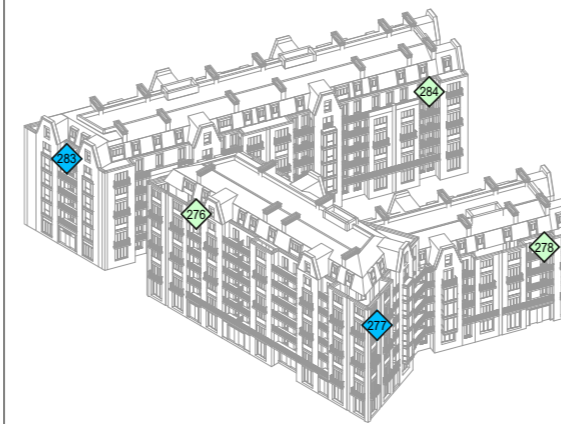
BLOCK 11/12 NORTH WEST



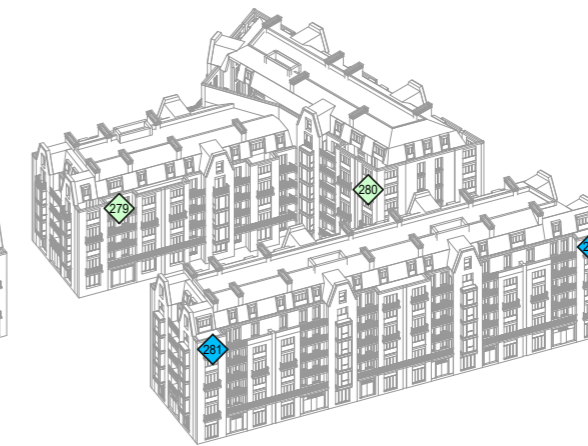
BLOCK 02/03 SOUTH EAST



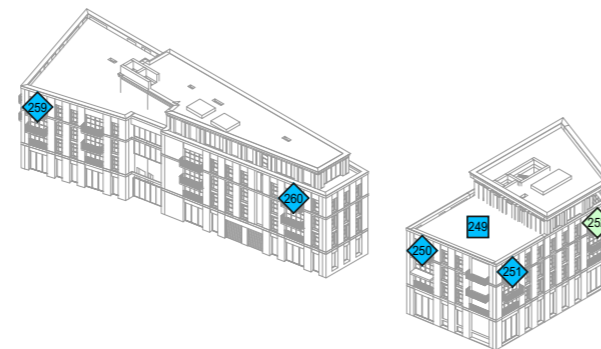
BLOCK 02/03 NORTH WEST



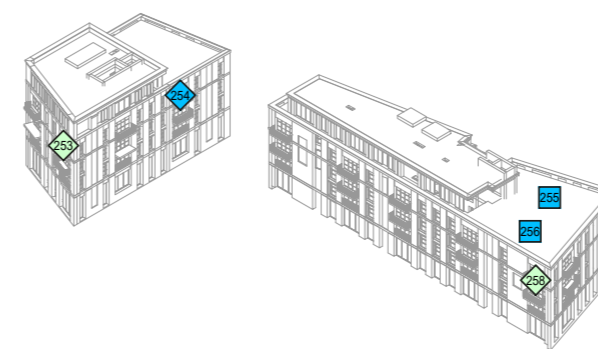
BLOCK 07/08 SOUTH EAST



BLOCK 07/08 NORTH WEST



BLOCK 09/10 SOUTH EAST



BLOCK 09/10 NORTH WEST

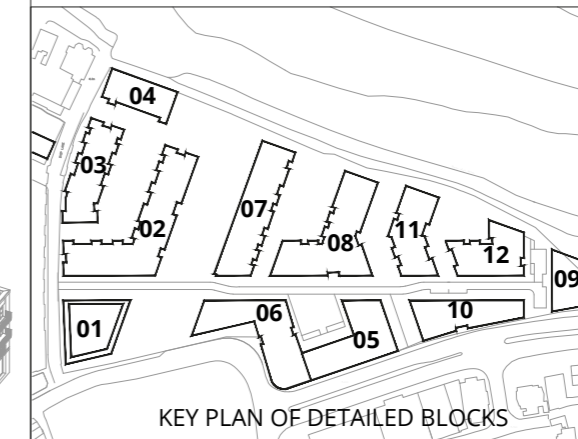
**LEGEND:**

**LDDC COMFORT CATEGORIES:**

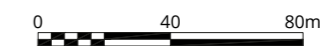
- Sitting —
- Standing —
- Strolling —
- Walking —
- Uncomfortable —

**SENSOR LOCATION:**

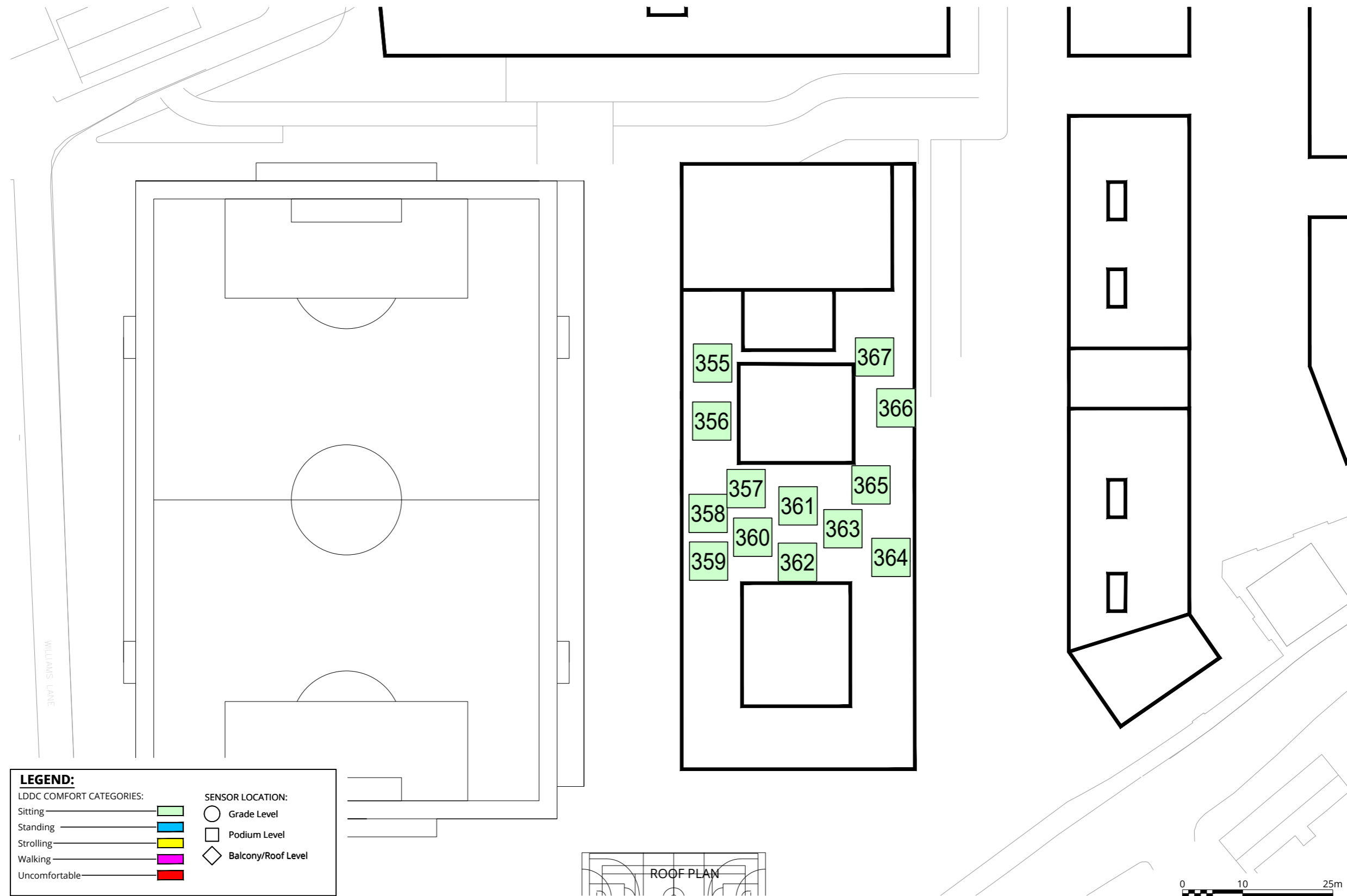
- Grade Level
- Podium Level
- Balcony/Roof Level



KEY PLAN OF DETAILED BLOCKS



Project Details	WIE10667-101: Stag Brewery, Mortlake
Figure Title	Figure 17.6: Configuration 2 - The Development with existing surrounding buildings (Balconies and Roof View, Windiest Season)
Figure Ref	WIE10667-101_GR_ES_17.6A
Date	2018
File Location	\\s-inc\wiel\projects\wie10667\101\graphics\es\issued figures



**LEGEND:**

<b>LDDC COMFORT CATEGORIES:</b>		<b>SENSOR LOCATION:</b>	
Sitting		○ Grade Level	
Standing		□ Podium Level	
Strolling		◇ Balcony/Roof Level	
Walking			
Uncomfortable			

<b>Project Details</b>	WIE10667-101: Stag Brewery, Mortlake
<b>Figure Title</b>	Figure 17.7: Configuration 2 - The Development with existing surrounding buildings (School Roof, Windiest Season)
<b>Figure Ref</b>	WIE10667-101_GR_ES_17.7A
<b>Date</b>	2018
<b>File Location</b>	\\s-Incs\wie\projects\wie10667\101\graphics\es\issued figures
	<a href="http://www.watermangroup.com">www.watermangroup.com</a>

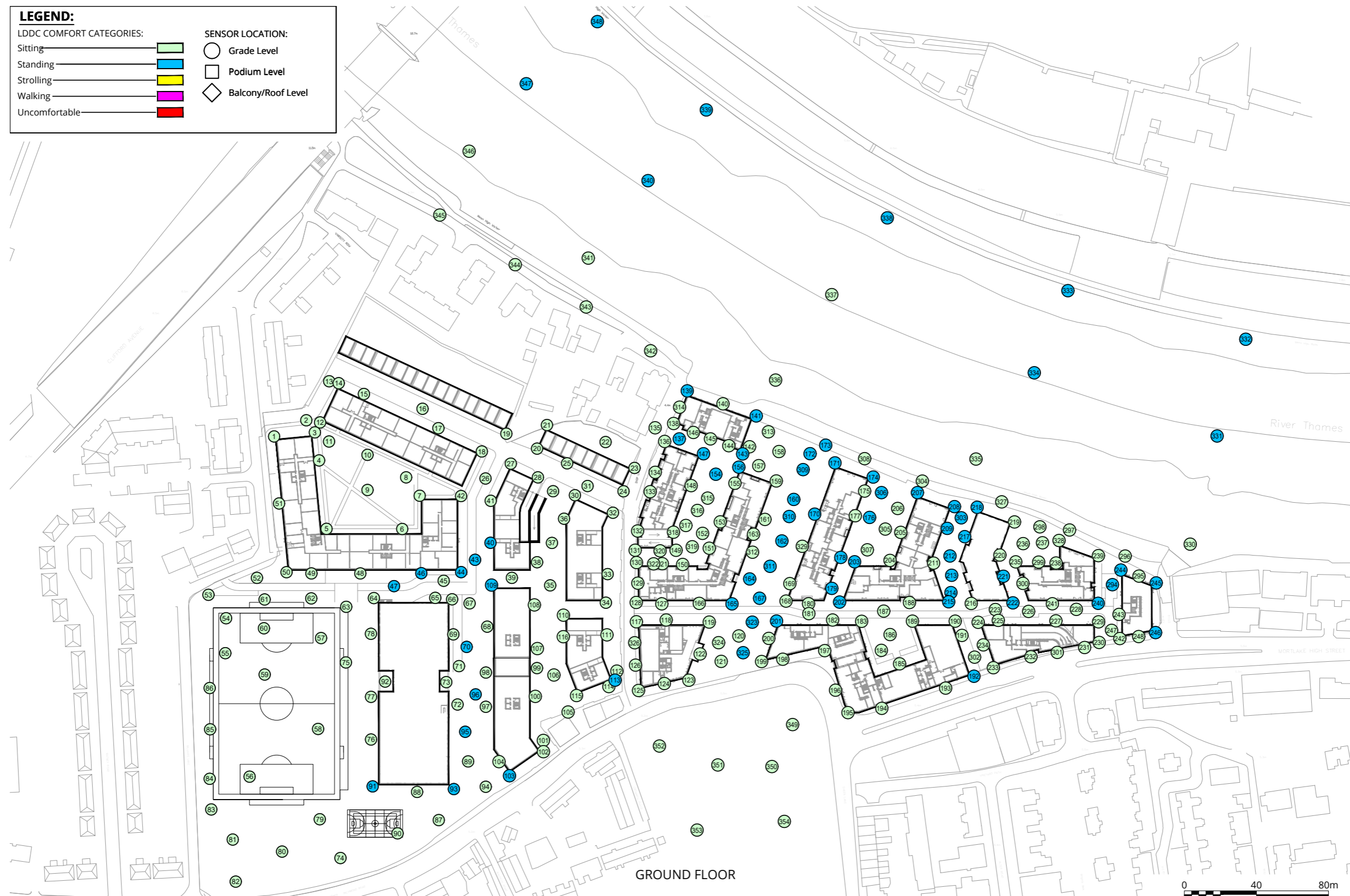
**LEGEND:**

LDDC COMFORT CATEGORIES:

- Sitting
- Standing
- Strolling
- Walking
- Uncomfortable

SENSOR LOCATION:

- Grade Level
- Podium Level
- Balcony/Roof Level



Project Details	WIE10667-101: Stag Brewery, Mortlake
Figure Title	Figure 17.8: Configuration 2 - The Development with existing surrounding buildings (Ground Floor, Summer Season)
Figure Ref	WIE10667-101_GR_ES_17.8A
Date	2018
File Location	\\s-inc\wiel\projects\wie10667\101\graphics\es\issued figures