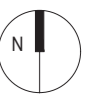


rev	details	by	date
D00	Issued for Planning	RJ	02.02.2018
D01	Issued for Planning	RJ	09.02.2018

Notes

- 1.0 All dimensions in millimeters.
- 1.2 Use only dimensions shown.



- Primary (Quiet Route)
- Secondary
- Tertiary
- Towpath
- Site Application Boundary
- School Application Boundary

© copyright GILLESPIES LLP, all rights reserved

Project
STAG BREWERY

Drawing
Proposed Site Wide Circulation Plan - Pedestrian

Date	Scale	Drawn	Checked
02.02.18	1:2500 @ A3	RC	RJ

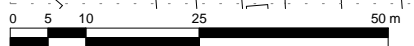
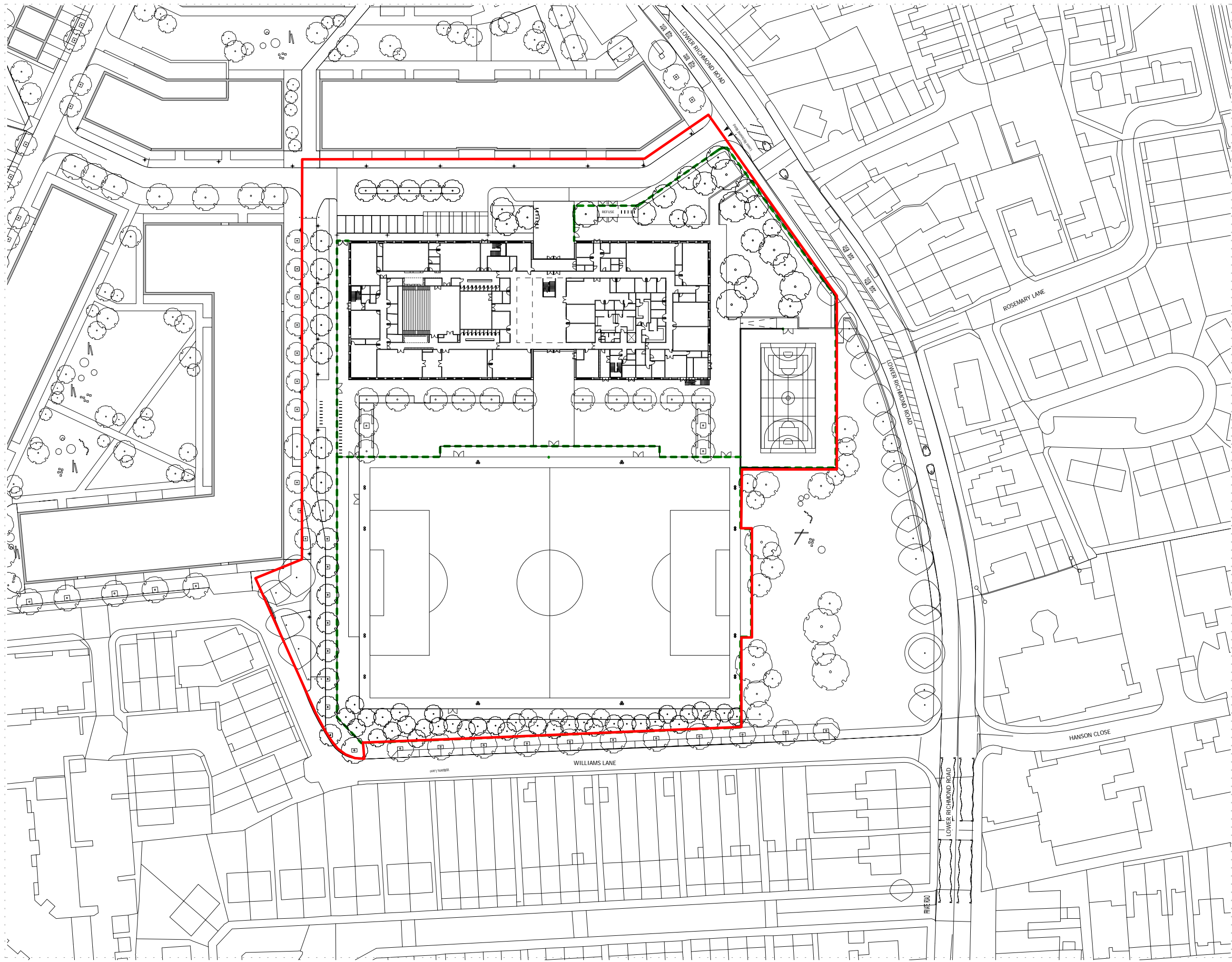
Drawing status	Revision
DESIGN	D01

Drawing number
P10736-00-001 - 109

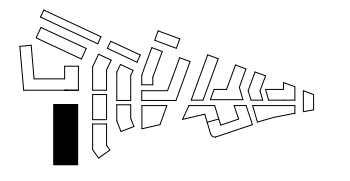
client
DARTMOUTH CAPITAL
Alameda House, 90-100 Sydney Street, London SW3 6NJ
P: xxxx xxx xxx

GILLESPIES

1 St John's Square, London EC1M 4DH
P: 0207 2532929 E: design.london@gillespies.co.uk



NOTES:
 DO NOT SCALE FROM THIS DRAWING. ALL DIMENSIONS TO BE CHECKED ON SITE. ALL OMISSIONS AND DISCREPANCIES TO BE REPORTED TO THE ARCHITECT IMMEDIATELY.
 ALL RIGHTS RESERVED. THIS WORK IS COPYRIGHT AND CANNOT BE REPRODUCED OR COPIED OR MODIFIED IN ANY FORM OR BY ANY MEANS, GRAPHIC ELECTRONIC OR MECHANICAL, INCLUDING PHOTOCOPYING WITHOUT THE WRITTEN PERMISSION OF SQUIRE AND PARTNERS ARCHITECTS.



— SCHOOL APPLICATION BOUNDARY
 - - - SCHOOL FENCE LINES

PLANNING APPLICATION	12/02/18	BJ
Revision description	Date	Check Rev

SQUIRE & PARTNERS

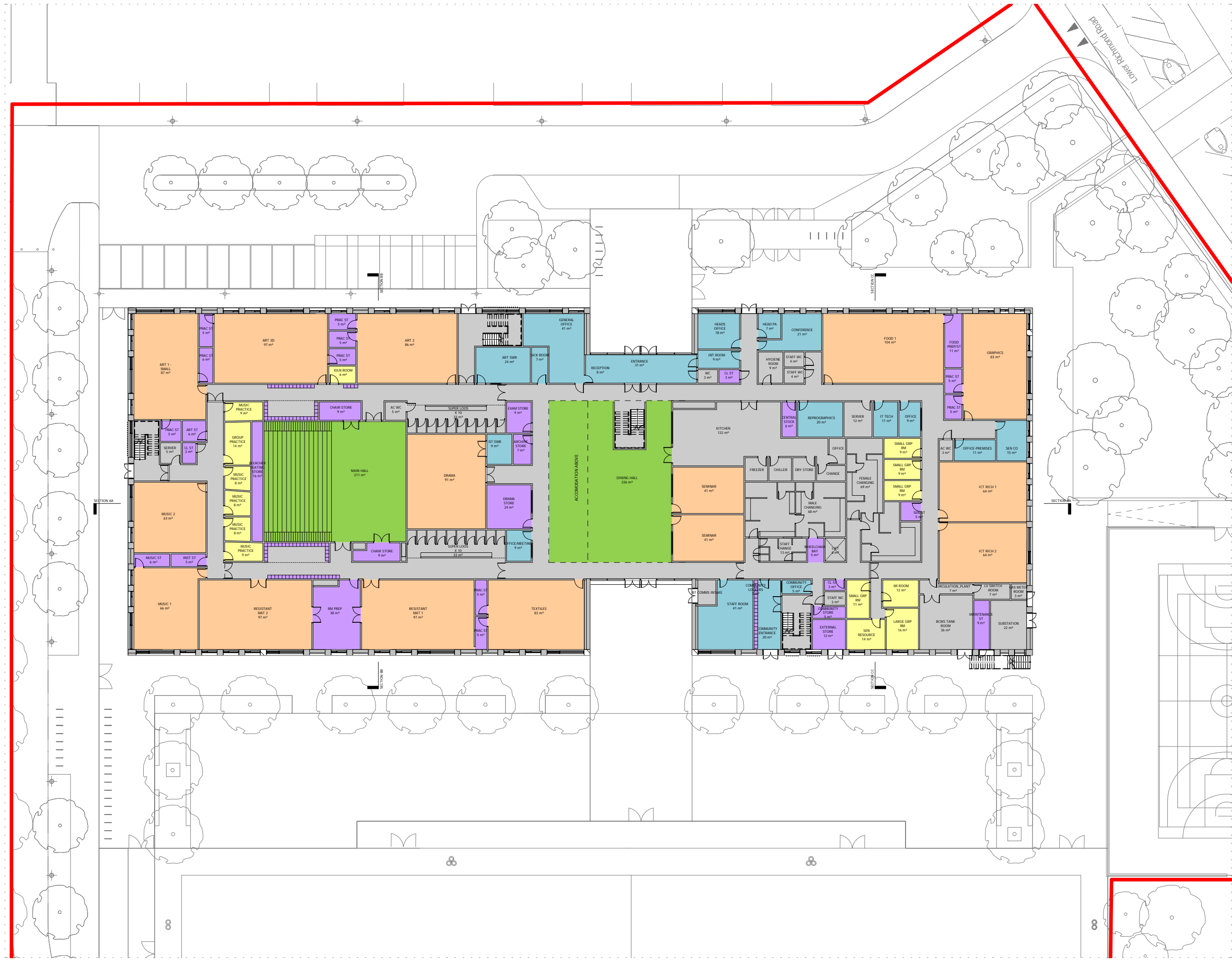
The Department Store
 248 Ferndale Road London SW9 8FR
 T: 020 7278 5555 F: 020 7239 0495

info@squireandpartners.com
 www.squireandpartners.com

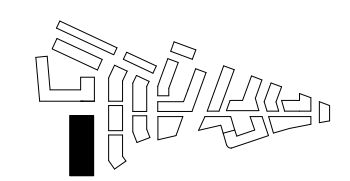
Project
Stag Brewery
 Richmond

Drawing
Z3 SCHOOL -PROPOSED SITE PLAN

Drawn	Date	Scale
RKL	01/17/18	1 : 500 @ A1 1 : 1000 @ A3
Job Number	Drawing number	Revision
16019	C645_Z3_P_AL_001	-



NOTES:
DO NOT SCALE FROM THIS DRAWING. ALL DIMENSIONS TO BE CHECKED ON SITE. ALL OMISSIONS AND DISCREPANCIES TO BE REPORTED TO THE ARCHITECT IMMEDIATELY.
ALL RIGHTS RESERVED. THIS WORK IS COPYRIGHT AND CANNOT BE REPRODUCED OR COPIED OR MODIFIED IN ANY FORM OR BY ANY MEANS, GRAPHIC ELECTRONIC OR MECHANICAL, INCLUDING PHOTOCOPYING WITHOUT THE WRITTEN PERMISSION OF SQUIRE AND PARTNERS ARCHITECTS.



- BASIC TEACHING AREA
- LARGE SPACE
- LEARNING RESOURCE AREA
- NON-NET AREA
- STAFF AND ADMINISTRATION AREA
- STORAGE



PLANNING APPLICATION	12/02/18	BJ	
Revision description	Date	Check	Rev

SQUIRE & PARTNERS
The Department Store
248 Ferndale Road London SW9 8FR
T: 020 7278 5555 F: 020 7239 0495

info@squireandpartners.com
www.squireandpartners.com

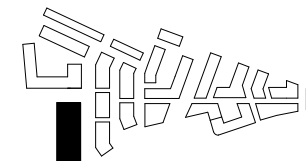
Project
Stag Brewery
Richmond

Drawing
Z3 SCHOOL - PROPOSED GROUND FLOOR PLAN

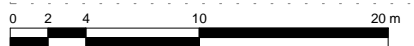
Drawn	Date	Scale
RKL	01/17/18	1 : 200 @ A1 1 : 400 @ A3
Job Number	Drawing number	Revision
16019	C645_Z3_P_00_001	-

NOTES:
DO NOT SCALE FROM THIS DRAWING. ALL DIMENSIONS TO BE CHECKED ON SITE. ALL OMISSIONS AND DISCREPANCIES TO BE REPORTED TO THE ARCHITECT IMMEDIATELY.

ALL RIGHTS RESERVED. THIS WORK IS COPYRIGHT AND CANNOT BE REPRODUCED OR COPIED OR MODIFIED IN ANY FORM OR BY ANY MEANS, GRAPHIC ELECTRONIC OR MECHANICAL, INCLUDING PHOTOCOPYING WITHOUT THE WRITTEN PERMISSION OF SQUIRE AND PARTNERS ARCHITECTS.



- BASIC TEACHING AREA
- LARGE SPACE
- LEARNING RESOURCE AREA
- NON-NET AREA
- STAFF AND ADMINISTRATION AREA
- STORAGE



Revision description	Date	Check	Rev
PLANNING APPLICATION	12/02/18	BJ	-

SQUIRE & PARTNERS

The Department Store
248 Ferndale Road London SW9 8FR
T: 020 7278 5555 F: 020 7239 0495

info@squireandpartners.com
www.squireandpartners.com

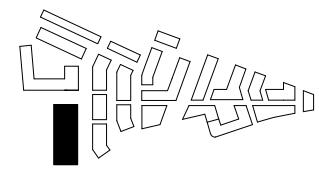
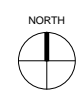
Project
Stag Brewery
Richmond

Drawing
Z3 SCHOOL - PROPOSED FIRST FLOOR PLAN

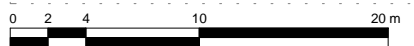
Drawn	Date	Scale
RKL	01/17/18	1 : 200 @ A1 1 : 400 @ A3
Job Number	Drawing number	Revision
16019	C645_Z3_P_01_001	-

NOTES:
DO NOT SCALE FROM THIS DRAWING. ALL DIMENSIONS TO BE CHECKED ON SITE. ALL OMISSIONS AND DISCREPANCIES TO BE REPORTED TO THE ARCHITECT IMMEDIATELY.

ALL RIGHTS RESERVED. THIS WORK IS COPYRIGHT AND CANNOT BE REPRODUCED OR COPIED OR MODIFIED IN ANY FORM OR BY ANY MEANS, GRAPHIC ELECTRONIC OR MECHANICAL, INCLUDING PHOTOCOPYING WITHOUT THE WRITTEN PERMISSION OF SQUIRE AND PARTNERS ARCHITECTS.



- BASIC TEACHING AREA
- LARGE SPACE
- LEARNING RESOURCE AREA
- NON-NET AREA
- STAFF AND ADMINISTRATION AREA
- STORAGE



Revision description	Date	Check	Rev
PLANNING APPLICATION	12/02/18	BJ	-

SQUIRE & PARTNERS

The Department Store
248 Ferndale Road London SW9 8FR
T: 020 7278 5555 F: 020 7239 0495

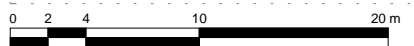
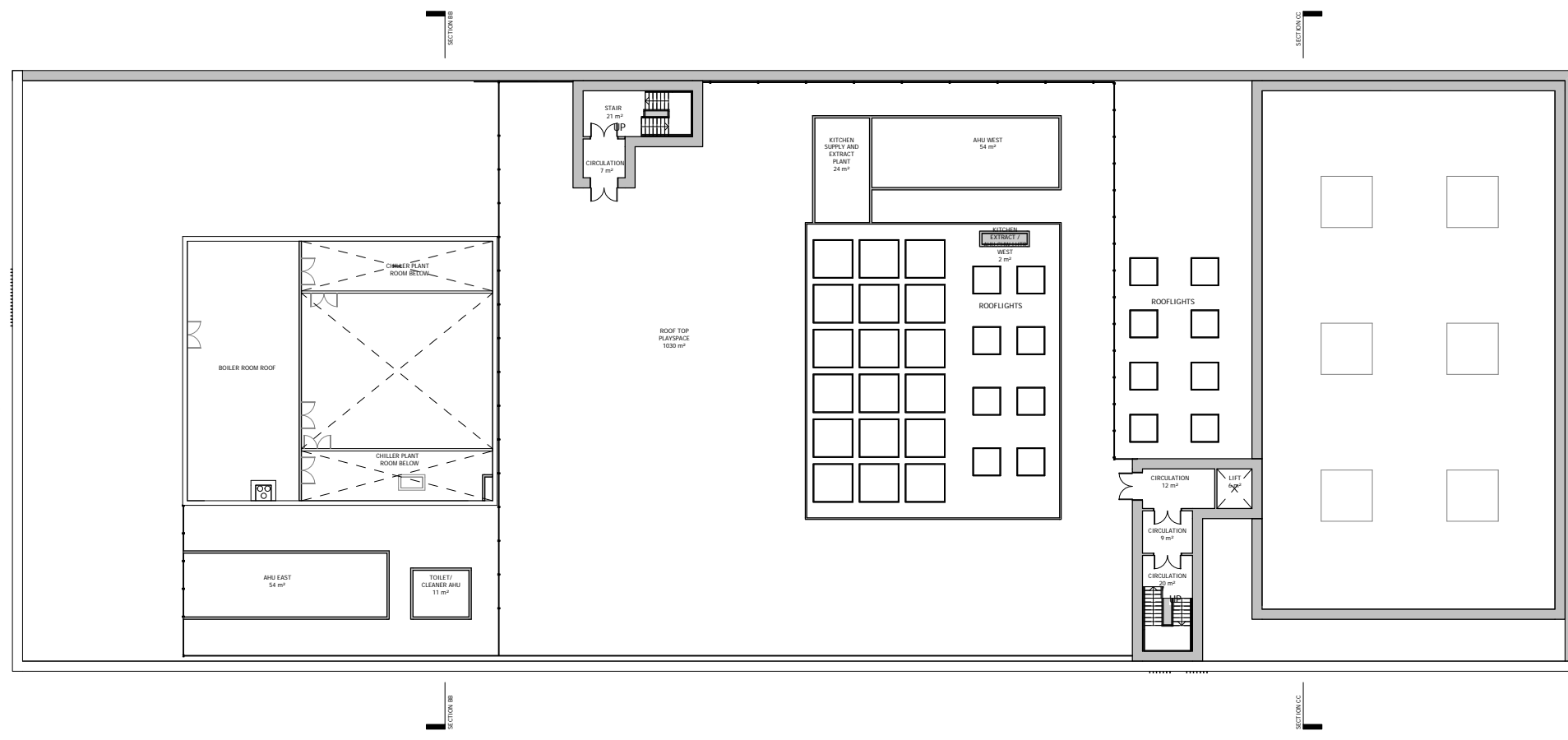
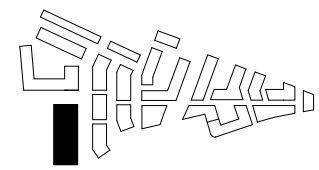
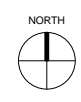
info@squireandpartners.com
www.squireandpartners.com

Project
Stag Brewery
Richmond

Drawing
Z3 SCHOOL - PROPOSED SECOND FLOOR PLAN

Drawn	Date	Scale	@ A1
RKL	01/17/18	1 : 200	@ A1
Job Number	Drawing number	Revision	
16019	C645_Z3_P_02_001	-	

NOTES:
 DO NOT SCALE FROM THIS DRAWING. ALL DIMENSIONS TO BE CHECKED ON SITE. ALL OMISSIONS AND DISCREPANCIES TO BE REPORTED TO THE ARCHITECT IMMEDIATELY.
 ALL RIGHTS RESERVED. THIS WORK IS COPYRIGHT AND CANNOT BE REPRODUCED OR COPIED OR MODIFIED IN ANY FORM OR BY ANY MEANS, GRAPHIC ELECTRONIC OR MECHANICAL, INCLUDING PHOTOCOPYING WITHOUT THE WRITTEN PERMISSION OF SQUIRE AND PARTNERS ARCHITECTS.



PLANNING APPLICATION	12/02/18	BJ	-
Revision description	Date	Check	Rev

SQUIRE & PARTNERS

The Department Store
 248 Ferndale Road London SW9 8FR
 T: 020 7278 5555 F: 020 7239 0495

info@squireandpartners.com
 www.squireandpartners.com

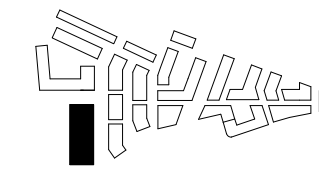
Project
Stag Brewery
 Richmond

Drawing
Z3 SCHOOL - PROPOSED ROOF PLAN

Drawn	Date	Scale
RKL	01/17/18	1 : 200 @ A1 1 : 400 @ A3
Job Number	Drawing number	Revision
16019	C645_Z3_P_RF_001	-

NOTES:
DO NOT SCALE FROM THIS DRAWING. ALL DIMENSIONS TO BE CHECKED ON SITE. ALL OMISSIONS AND DISCREPANCIES TO BE REPORTED TO THE ARCHITECT IMMEDIATELY.

ALL RIGHTS RESERVED. THIS WORK IS COPYRIGHT AND CANNOT BE REPRODUCED OR COPIED OR MODIFIED IN ANY FORM OR BY ANY MEANS, GRAPHIC ELECTRONIC OR MECHANICAL, INCLUDING PHOTOCOPYING WITHOUT THE WRITTEN PERMISSION OF SQUIRE AND PARTNERS ARCHITECTS.

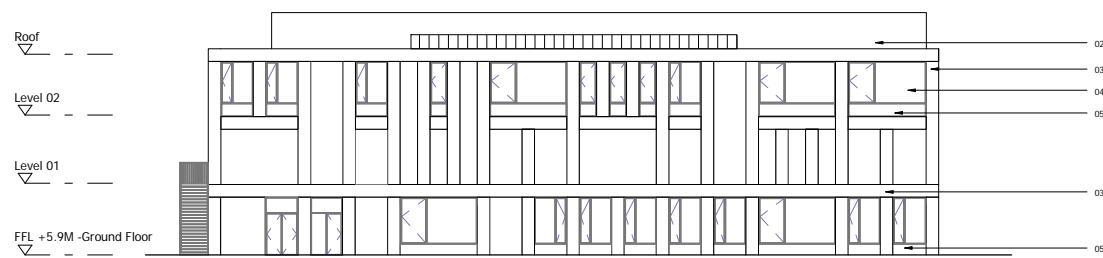


MATERIALS KEY

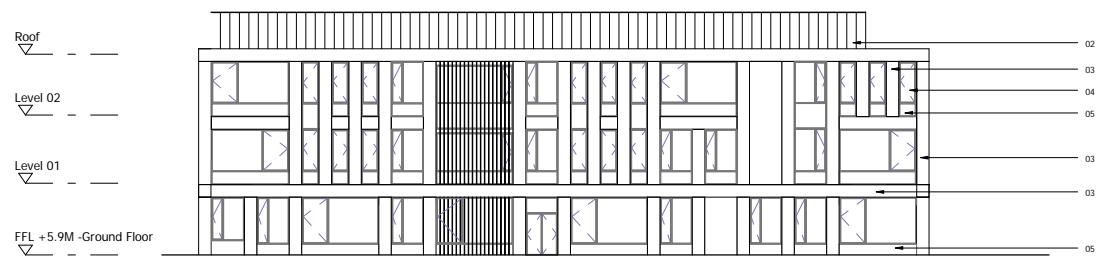
- 01. PPC METAL FLASHING
- 02. PPC METAL CLADDING
- 03. BRICK WALLPIER
- 04. CLEAR GLAZING WITH PPC ALUMINIUM FRAME
- 05. PPC METAL SPANDREL PANEL



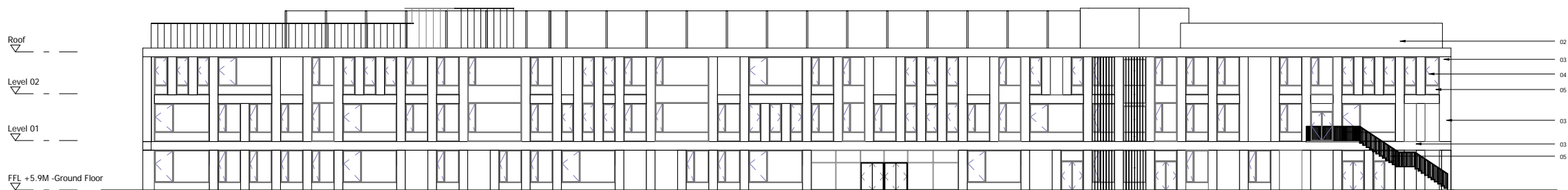
2 PROPOSED EAST ELEVATION
1 : 200



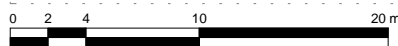
3 PROPOSED SOUTH ELEVATION
1 : 200



4 PROPOSED NORTH ELEVATION
1 : 200



1 PROPOSED WEST ELEVATION
1 : 200



PLANNING APPLICATION	12/02/18	BJ	-
Revision description	Date	Check	Rev

SQUIRE & PARTNERS

The Department Store
248 Ferndale Road London SW9 8FR
T: 020 7278 5555 F: 020 7239 0495

info@squireandpartners.com
www.squireandpartners.com

Project
Stag Brewery
Richmond

Drawing
Z3 SCHOOL - PROPOSED ELEVATIONS

Drawn	Date	Scale	@ A1
NRH	01/17/18	1 : 200	@ A3
Job Number	Drawing number	Revision	
16019	C645_Z3_E_AL_001	-	



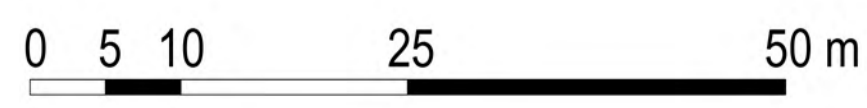
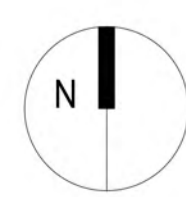
- LEGEND**
- GENERAL**
- Site Planning Application Boundary
 - School Planning Application Boundary
- PAVING**
- Paving Type 1: Stone slabs for footpath
 - Paving Type 2: Stone paving for shared surface
 - Paving Type 5: Stone flag paving for patios and entrances
 - Paving Type 8: Resin bound gravel
 - Paving Type 9: Artificial Stone flag paving
 - Paving Type 10: School road asphalt paving with 300mm granite kerb
 - Paving Type 11: Macadam MUGA surfacing
 - Paving Type 12: 3D artificial grass
 - Paving Type 13: Artificial permeable surfacing
- STRUCTURES**
- Fence Type 1: 1.2m high fence for school
 - Fence Type 2: 2.0m high fence for school
 - Fence Type 3: 4.5m high fence for school
 - Gate Type 1: Double door gate for school
- FURNITURE**
- Seat Type 1: Concrete bench
 - Cycle Stand Type 1: Galvalume cycle rack - galvanneal steel
 - Retaining Wall: Retaining wall with fence
 - Tree Surround Type 1: Resin bound gravel
- PLANTING**
- Short Mown Grass
 - Planting Mix: Mixed perennial and evergreen planting
 - Hedge Type 1: 1.5m high hedge
 - Existing Trees to be Retained: Protected during all works
 - Proposed Trees
 - Meadow Planting: Mixed meadow planting
- LIGHTING**
- Lighting Column: To lighting designer's details
 - Lighting Column: To lighting designer's details
 - Sports Lighting Column: To lighting designer's details
 - Sports Lighting Column: To lighting designer's details

rev	details	by	date
D00	Issue for Planning	RJ	02.02.2018
D01	Issue for Planning	RJ	09.02.2018
D02	Issue for Planning	RJ	14.02.2018

rev	details	by	date

Notes

- Do not scale from drawing, use figured dimensions only
- All dimensions to be checked onsite
- This drawing to be read in conjunction with all other Gillespies drawings and specifications



Project title
STAG BREWERY

Drawing title
School Rendered Masterplan (Interim)

Drawing number
P10736-00-001-130

Drawing Status
DESIGN

Date
02.02.18

Scale
1:500 @ A1

Revision
D02

Drawn
RJ

Checked
RC

Client
DARTMOUTH CAPITAL

Alameda House, 90-100 Sydney Street, London SW3 6JH

P: 0207 629 6239

GILLESPIES

1 St John's Square, London EC1A 4EH
P: 020 7253 2929 F: 020 7253 3900 E: design.london@gillespies.co.uk

© copyright GILLESPIES LLP, all rights reserved



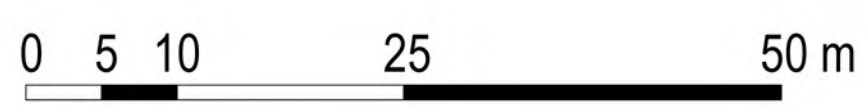
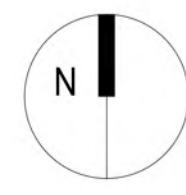
- LEGEND**
- GENERAL**
- Site Planning Application Boundary
 - School Planning Application Boundary
- PAVING**
- Paving Type 1: Stone slabs for footpath
 - Paving Type 2: Stone paving for shared surface
 - Paving Type 5: Stone flag paving for grass and entrances
 - Paving Type 8: Resin bound gravel
 - Paving Type 9: Artificial Stone flag paving
 - Paving Type 10: School road asphalt paving with 300mm granite kerb
 - Paving Type 11: Macadam MUGA surfacing
 - Paving Type 12: 3D artificial grass
 - Paving Type 13: Artificial permeable surfacing
- STRUCTURES**
- Fence Type 1: 1.2m high fence for school
 - Fence Type 2: 2.0m high fence for school
 - Fence Type 3: 4.5m high fence for school
 - Gate Type 1: Double door gate for school
- FURNITURE**
- Seat Type 1: Concrete bench
 - Cycle Stand Type 1: Painted cycle rack - galvanneal steel
 - Retaining Wall: Retaining wall with fence
 - Tree Surround Type 1: Resin bound gravel
- PLANTING**
- Short Mown Grass
 - Planting Mix: Mixed perennial and evergreen planting
 - Hedge Type 1: 1.5m high hedge
 - Existing Trees to be Retained: Protected during all works
 - Proposed Trees
 - Meadow Planting: Mixed meadow planting
- LIGHTING**
- Lighting Column: To lighting designer's details
 - Sports Lighting Column: To lighting designer's details

rev	details	by	date
D00	Issue for Planning	RJ	02.02.2018
D01	Issue for Planning	RJ	09.02.2018
D02	Issue for Planning	RJ	14.02.2018

rev	details	by	date

Notes

- Do not scale from drawing, use figured dimensions only
- All dimensions to be checked onsite
- This drawing to be read in conjunction with all other Gillespies drawings and specifications



Project title
STAG BREWERY

Drawing title
School Rendered Masterplan (Final)

Drawing number
P10736-00-001-131

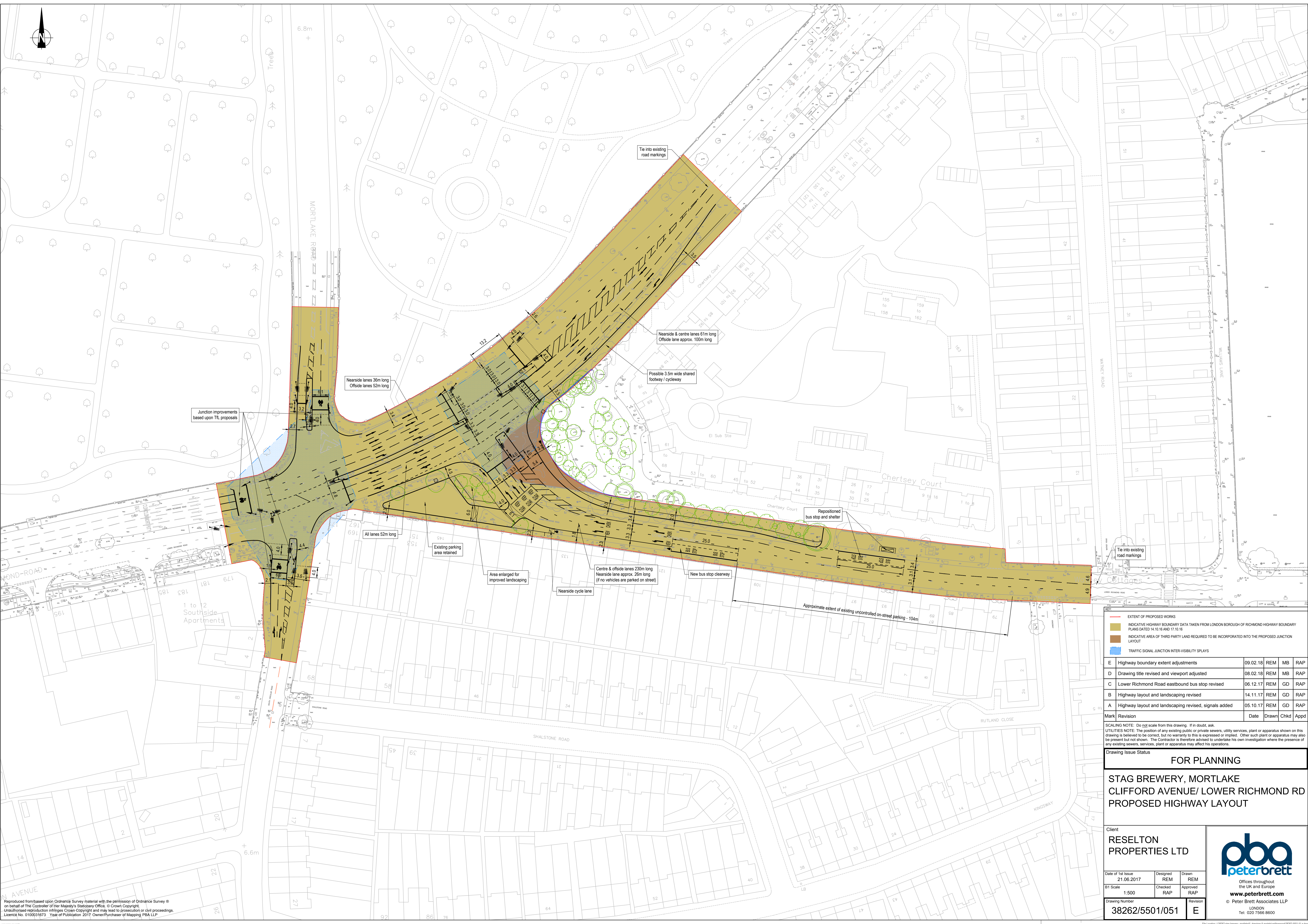
Drawing Status: **DESIGN** Revision: **D02**

Date	Scale	Drawn	Checked
02.02.18	1:500 @ A1	RJ	RC

© copyright GILLESPIES LLP, all rights reserved

Client
DARTMOUTH CAPITAL
Alameda House, 90-100 Sydney Street, London SW13 6JU
P: 0207 629 0239

GILLESPIES
1 St John's Square, London EC3M 4EH
P: 020 7253 2629 F: 020 7253 3900 E: design.london@gillespies.co.uk



	EXTENT OF PROPOSED WORKS
	INDICATIVE HIGHWAY BOUNDARY DATA TAKEN FROM LONDON BOROUGH OF RICHMOND HIGHWAY BOUNDARY PLANS DATED 14.10.16 AND 17.10.16
	INDICATIVE AREA OF THIRD PARTY LAND REQUIRED TO BE INCORPORATED INTO THE PROPOSED JUNCTION LAYOUT
	TRAFFIC SIGNAL JUNCTION INTER-VISIBILITY SPLAYS

E	Highway boundary revised adjustments	09.02.18	REM	MB	RAP
D	Drawing title revised and viewport adjusted	08.02.18	REM	MB	RAP
C	Lower Richmond Road eastbound bus stop revised	06.12.17	REM	GD	RAP
B	Highway layout and landscaping revised	14.11.17	REM	GD	RAP
A	Highway layout and landscaping revised, signals added	05.10.17	REM	GD	RAP
Mark	Revision	Date	Drawn	Chkd	Appd

SCALING NOTE: Do not scale from this drawing. If in doubt, ask.
 UTILITIES NOTE: The position of any existing public or private sewers, utility services, plant or apparatus shown on this drawing is believed to be correct, but no warranty to this is expressed or implied. Other such plant or apparatus may also be present but not shown. The Contractor is therefore advised to undertake his own investigation where the presence of any existing sewers, services, plant or apparatus may affect his operations.

Drawing Issue Status **FOR PLANNING**

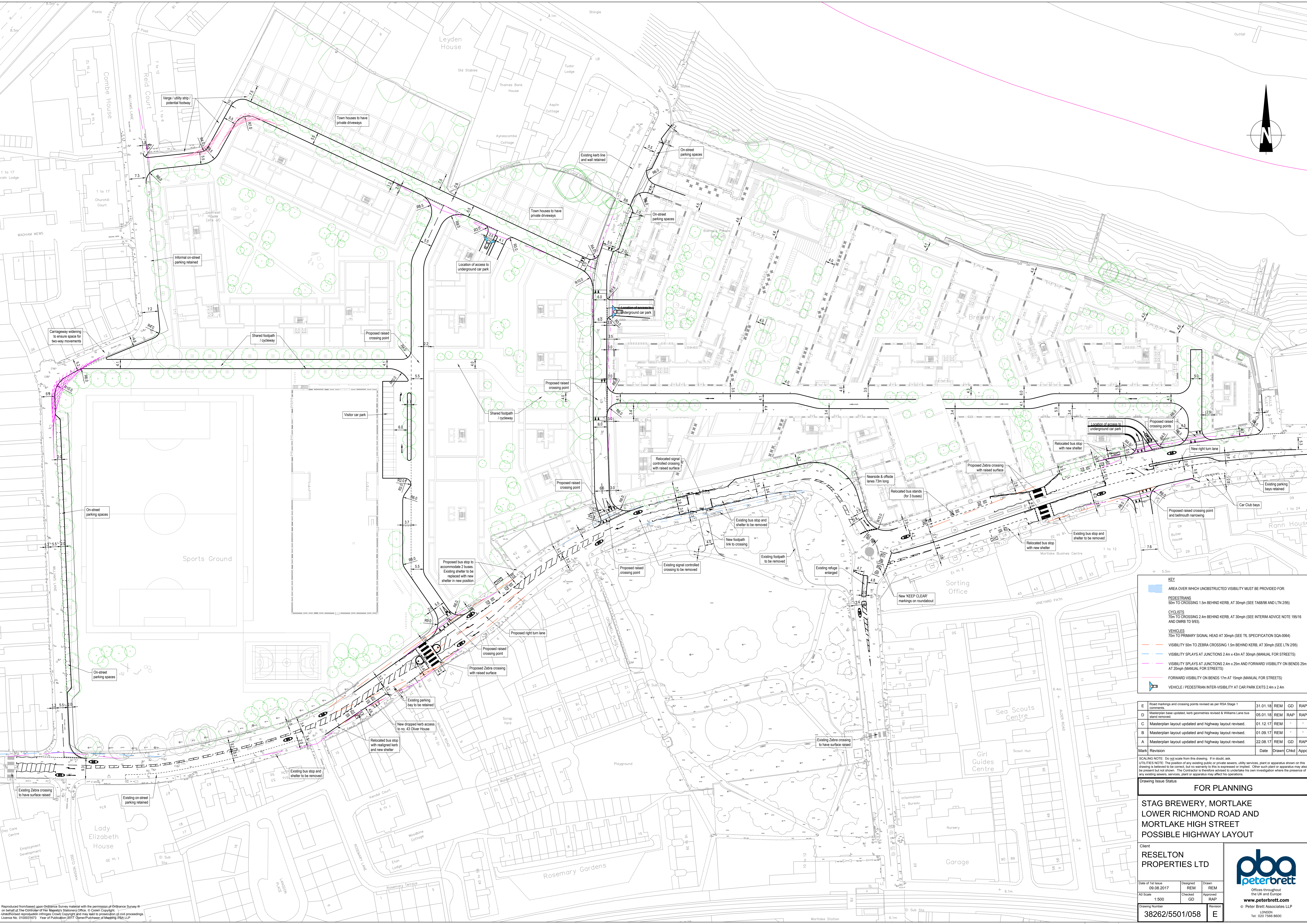
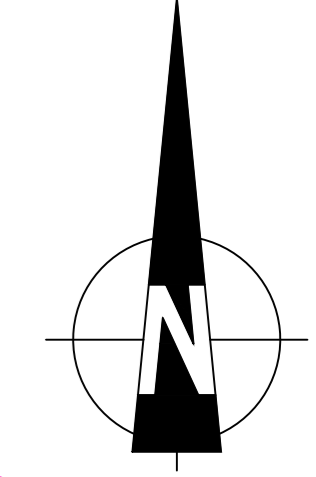
**STAG BREWERY, MORTLAKE
 CLIFFORD AVENUE/ LOWER RICHMOND RD
 PROPOSED HIGHWAY LAYOUT**

Client
**RESELTON
 PROPERTIES LTD**

Date of 1st Issue	Designed	Drawn
21.06.2017	REM	REM
B1 Scale	Checked	Approved
1:500	RAP	RAP
Drawing Number	Revision	
38262/5501/051	E	

Offices throughout the UK and Europe
www.peterbrett.com
 © Peter Brett Associates LLP
 LONDON
 Tel: 020 7566 8600

Reproduced from based upon Ordnance Survey material with the permission of Ordnance Survey © on behalf of the Controller of Her Majesty's Stationery Office. © Crown Copyright. Unauthorised reproduction infringes Crown Copyright and may lead to prosecution or civil proceedings. Licence No. 0100031673 Year of Publication 2017 Owner/Purchaser of Mapping PBA LLP



KEY

AREA OVER WHICH UNOBSTRUCTED VISIBILITY MUST BE PROVIDED FOR:

PEDESTRIANS
50m TO CROSSING 1.5m BEHIND KERB, AT 30mph (SEE TA6898 AND LTN 2/95)

CYCLISTS
70m TO CROSSING 2.4m BEHIND KERB, AT 30mph (SEE INTERIM ADVICE NOTE 195/16 AND DMRB TD 9/93)

VEHICLES
70m TO PRIMARY SIGNAL HEAD AT 30mph (SEE TL SPECIFICATION SQA-0064)

VEHICLE VISIBILITY SPLAYS AT JUNCTIONS 2.4m x 43m AT 30mph (SEE LTN 2/95)

VEHICLE VISIBILITY SPLAYS AT JUNCTIONS 2.4m x 25m AND FORWARD VISIBILITY ON BENDS 25m AT 20mph (MANUAL FOR STREETS)

FORWARD VISIBILITY ON BENDS 17m AT 15mph (MANUAL FOR STREETS)

VEHICLE / PEDESTRIAN INTER-VISIBILITY AT CAR PARK EXITS 2.4m x 2.4m

Mark	Revision	Date	Drawn	Chkd	Appd
E	Road markings and crossing points revised as per RSA Stage 1 comments.	31.01.18	REM	GD	RAP
D	Masterplan base updated, kerb geometries revised & Williams Lane bus stand removed.	05.01.18	REM	RAP	RAP
C	Masterplan layout updated and highway layout revised.	01.12.17	REM	-	-
B	Masterplan layout updated and highway layout revised.	01.09.17	REM	-	-
A	Masterplan layout updated and highway layout revised.	22.08.17	REM	GD	RAP

SCALING NOTE: Do not scale from this drawing. If in doubt, ask.
 UTILITIES NOTE: The position of any existing public or private sewers, utility services, plant or apparatus shown on this drawing is believed to be correct, but no warranty is made in this respect or implied. Other such plant or apparatus may also be present but not shown. The Contractor is therefore advised to undertake his own investigation where the presence of any existing sewers, services, plant or apparatus may affect his operations.

FOR PLANNING

STAG BREWERY, MORTLAKE LOWER RICHMOND ROAD AND MORTLAKE HIGH STREET POSSIBLE HIGHWAY LAYOUT

Client
RESELTON PROPERTIES LTD

Date of 1st Issue: 09.08.2017
 A0 Scale: 1:500

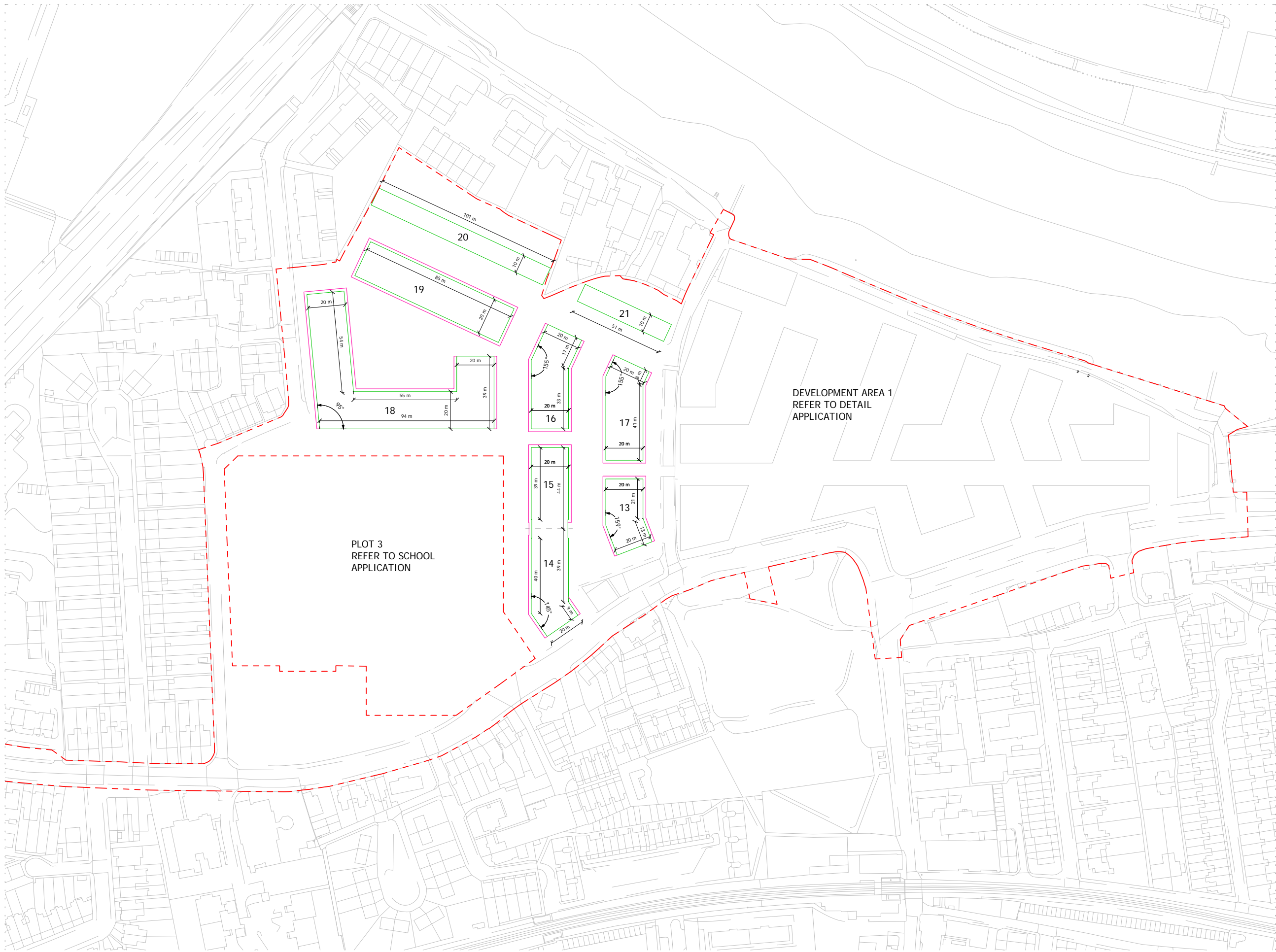
Designed	Checked	Drawn
REM	GD	REM
GD	Approved	RAP

Drawing Number: **38262/5501/058**

Scale: 1:500

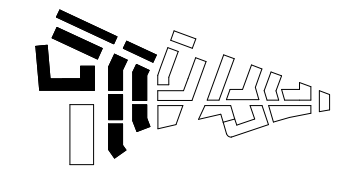
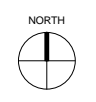
© Peter Brett Associates LLP
 LONDON
 Tel: 020 7566 8600

Reproduced from based upon Ordnance Survey material with the permission of Ordnance Survey on behalf of the Controller of Her Majesty's Stationery Office. © Crown Copyright. Unauthorised reproduction infringes Crown Copyright and may lead to prosecution of civil proceedings. Licence No. 010001873 Year of Publication: 2017. OpenStreetMap contributors, CC-BY, Imagery © Mapbox

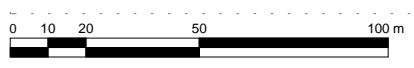


NOTES:
DO NOT SCALE FROM THIS DRAWING. ALL DIMENSIONS TO BE CHECKED ON SITE. ALL OMISSIONS AND DISCREPANCIES TO BE REPORTED TO THE ARCHITECT IMMEDIATELY.

ALL RIGHTS RESERVED. THIS WORK IS COPYRIGHT AND CANNOT BE REPRODUCED OR COPIED OR MODIFIED IN ANY FORM OR BY ANY MEANS, GRAPHIC ELECTRONIC OR MECHANICAL, INCLUDING PHOTOCOPYING WITHOUT THE WRITTEN PERMISSION OF SQUIRE AND PARTNERS ARCHITECTS.



- HORIZONTAL LIMITS OF DEVIATION
- MINIMUM BLOCK FOOTPRINT
 - +1.5M FROM MINIMUM BLOCK FOOTPRINT
 - BLOCKS BELOW
 - 13-21** BLOCK NUMBER
 - PLANNING APPLICATION BOUNDARY



FINAL DRAFT PLANNING APPLICATION	18/01/18	BJ	
Revision description	Date	Check	Rev

SQUIRE & PARTNERS

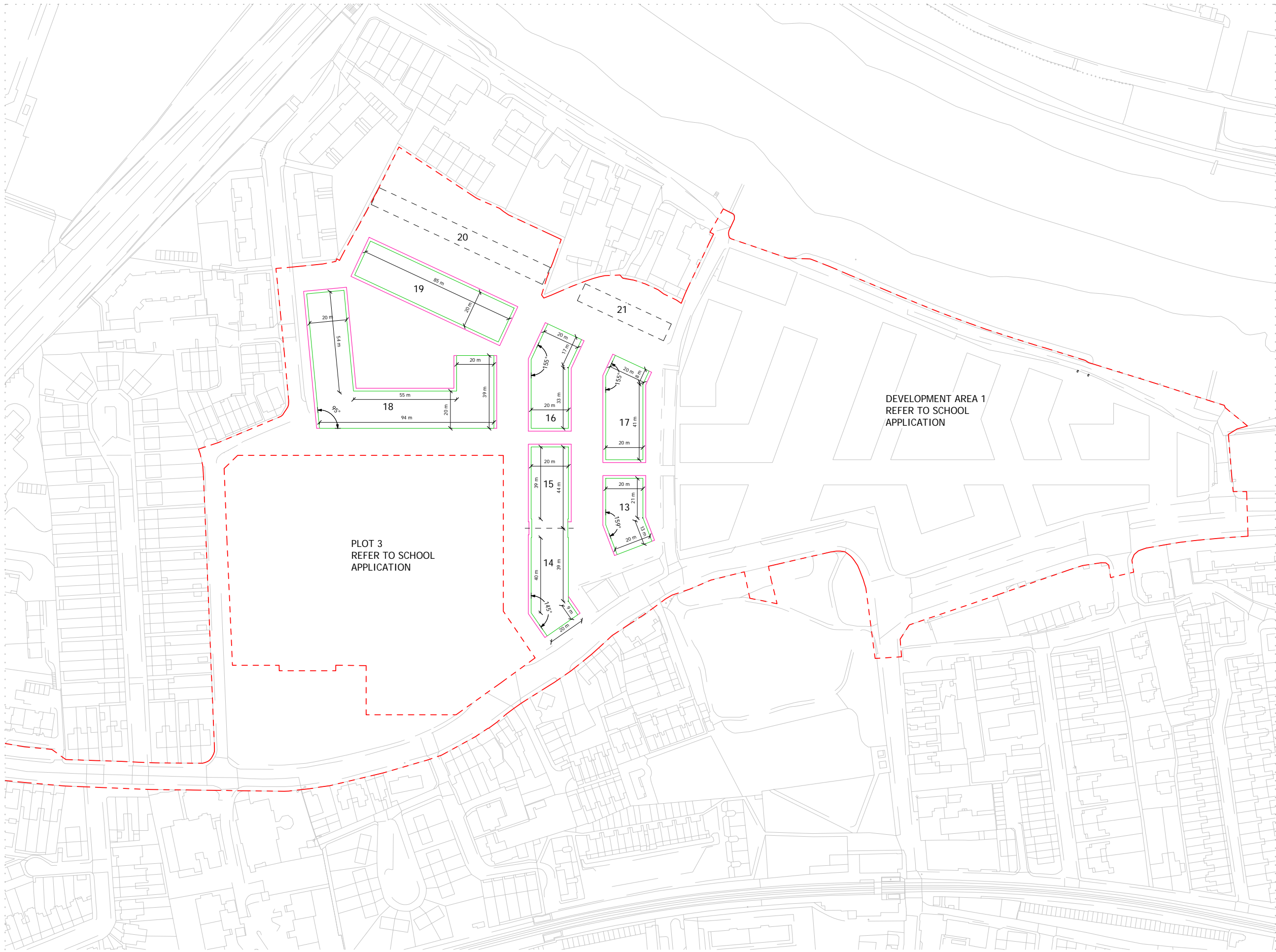
The Department Store
248 Ferndale Road London SW9 8FR
T: 020 7278 5555 F: 020 7239 0495

info@squireandpartners.com
www.squireandpartners.com

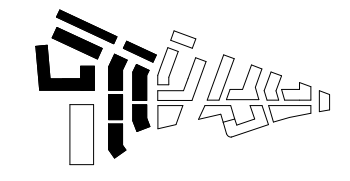
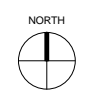
Project
Stag Brewery
Richmond

Drawing
**BLOCK FOOTPRINT AND
HORIZONTAL LINES OF DEVIATION
GROUND TO SECOND FLOOR**

Drawn	Date	Scale
KHO	01/18/18	1 : 1000 @ A1 1 : 2000 @ A3
Job Number	Drawing number	Revision
16019	C645_Z2_P_PR_001	-



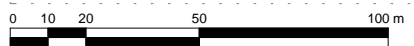
NOTES:
 DO NOT SCALE FROM THIS DRAWING. ALL DIMENSIONS TO BE CHECKED ON SITE. ALL OMISSIONS AND DISCREPANCIES TO BE REPORTED TO THE ARCHITECT IMMEDIATELY.
 ALL RIGHTS RESERVED. THIS WORK IS COPYRIGHT AND CANNOT BE REPRODUCED OR COPIED OR MODIFIED IN ANY FORM OR BY ANY MEANS, GRAPHIC ELECTRONIC OR MECHANICAL, INCLUDING PHOTOCOPIING WITHOUT THE WRITTEN PERMISSION OF SQUIRE AND PARTNERS ARCHITECTS.



- HORIZONTAL LIMITS OF DEVIATION
- MINIMUM BLOCK FOOTPRINT
 - +1.5M FROM MINIMUM BLOCK FOOTPRINT
 - - - BLOCKS BELOW
 - 13-21** BLOCK NUMBER
 - - - - PLANNING APPLICATION BOUNDARY

DEVELOPMENT AREA 1
 REFER TO SCHOOL
 APPLICATION

PLOT 3
 REFER TO SCHOOL
 APPLICATION



Revision description	Date	Check	Rev
FINAL DRAFT PLANNING APPLICATION	18/01/18	BJ	-

SQUIRE & PARTNERS

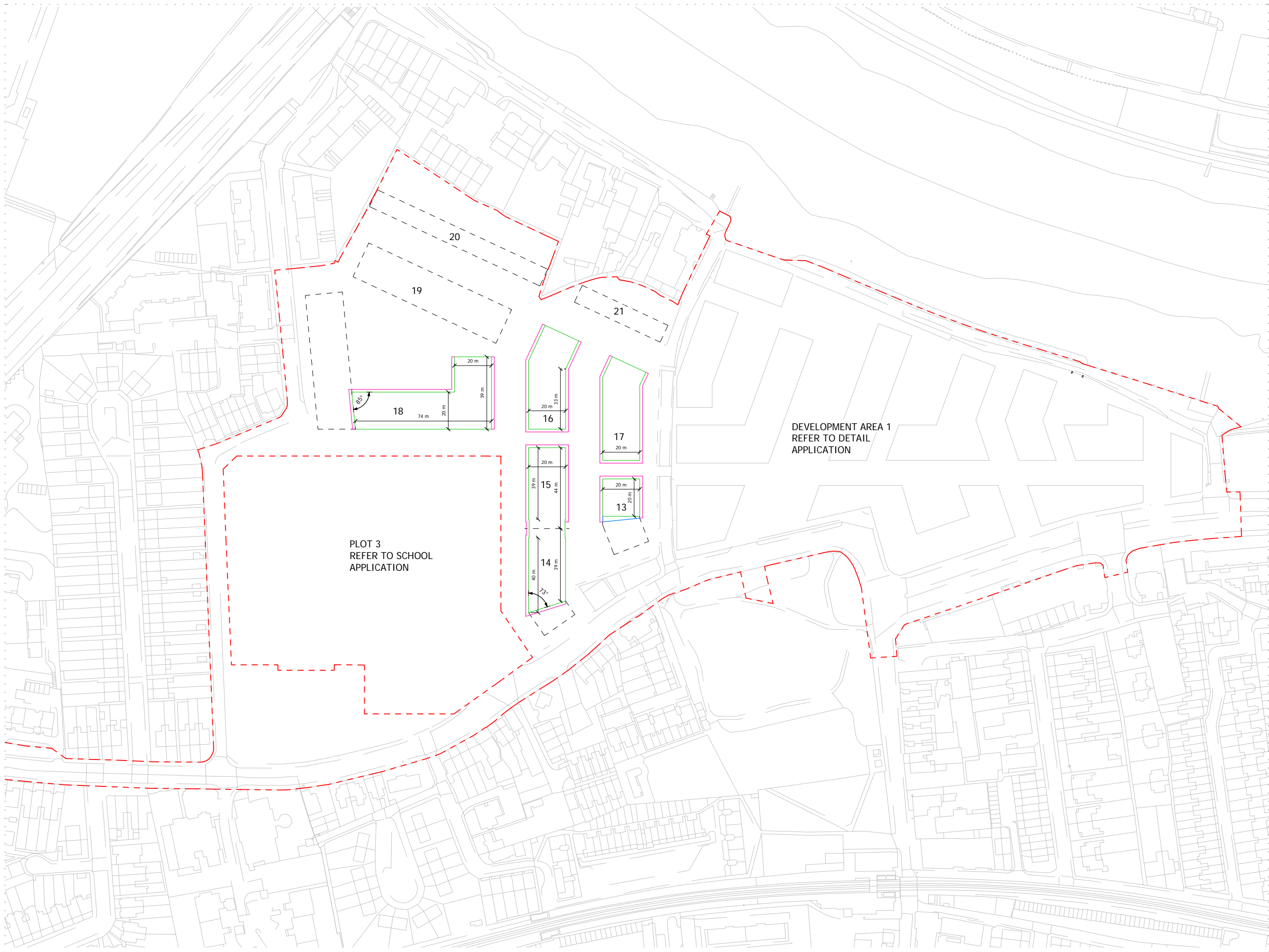
The Department Store
 248 Ferndale Road London SW9 8FR
 T: 020 7278 5555 F: 020 7239 0495

info@squireandpartners.com
 www.squireandpartners.com

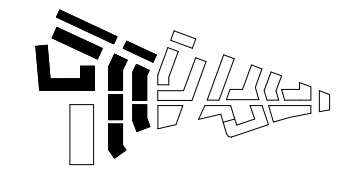
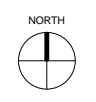
Project
Stag Brewery
 Richmond

Drawing
**BLOCK FOOTPRINT AND
 HORIZONTAL LINES OF DEVIATION
 THIRD FLOOR**

Drawn	Date	Scale
KHO	01/18/18	1 : 1000 @ A1 1 : 2000 @ A3
Job Number	Drawing number	Revision
16019	C645_Z2_P_PR_002	-



NOTES:
 DO NOT SCALE FROM THIS DRAWING. ALL DIMENSIONS TO BE CHECKED ON SITE. ALL OMISSIONS AND DISCREPANCIES TO BE REPORTED TO THE ARCHITECT IMMEDIATELY.
 ALL RIGHTS RESERVED. THIS WORK IS COPYRIGHT AND CANNOT BE REPRODUCED OR COPIED OR MODIFIED IN ANY FORM OR BY ANY MEANS, GRAPHIC ELECTRONIC OR MECHANICAL, INCLUDING PHOTOCOPIING WITHOUT THE WRITTEN PERMISSION OF SQUIRE AND PARTNERS ARCHITECTS.



- HORIZONTAL LIMITS OF DEVIATION
- MINIMUM BLOCK FOOTPRINT
 - +1.5M FROM MINIMUM BLOCK FOOTPRINT
 - +3.0M FROM MINIMUM BLOCK FOOTPRINT
 - BLOCKS BELOW
 - 13-21 BLOCK NUMBER
 - PLANNING APPLICATION BOUNDARY

DEVELOPMENT AREA 1
 REFER TO DETAIL APPLICATION

PLOT 3
 REFER TO SCHOOL APPLICATION

Revision description	Date	Check	Rev
FINAL DRAFT PLANNING APPLICATION	18/01/18	BJ	-

SQUIRE & PARTNERS

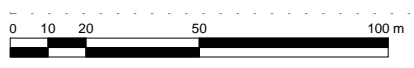
The Department Store
 248 Ferndale Road London SW9 8FR
 T: 020 7278 5555 F: 020 7239 0495

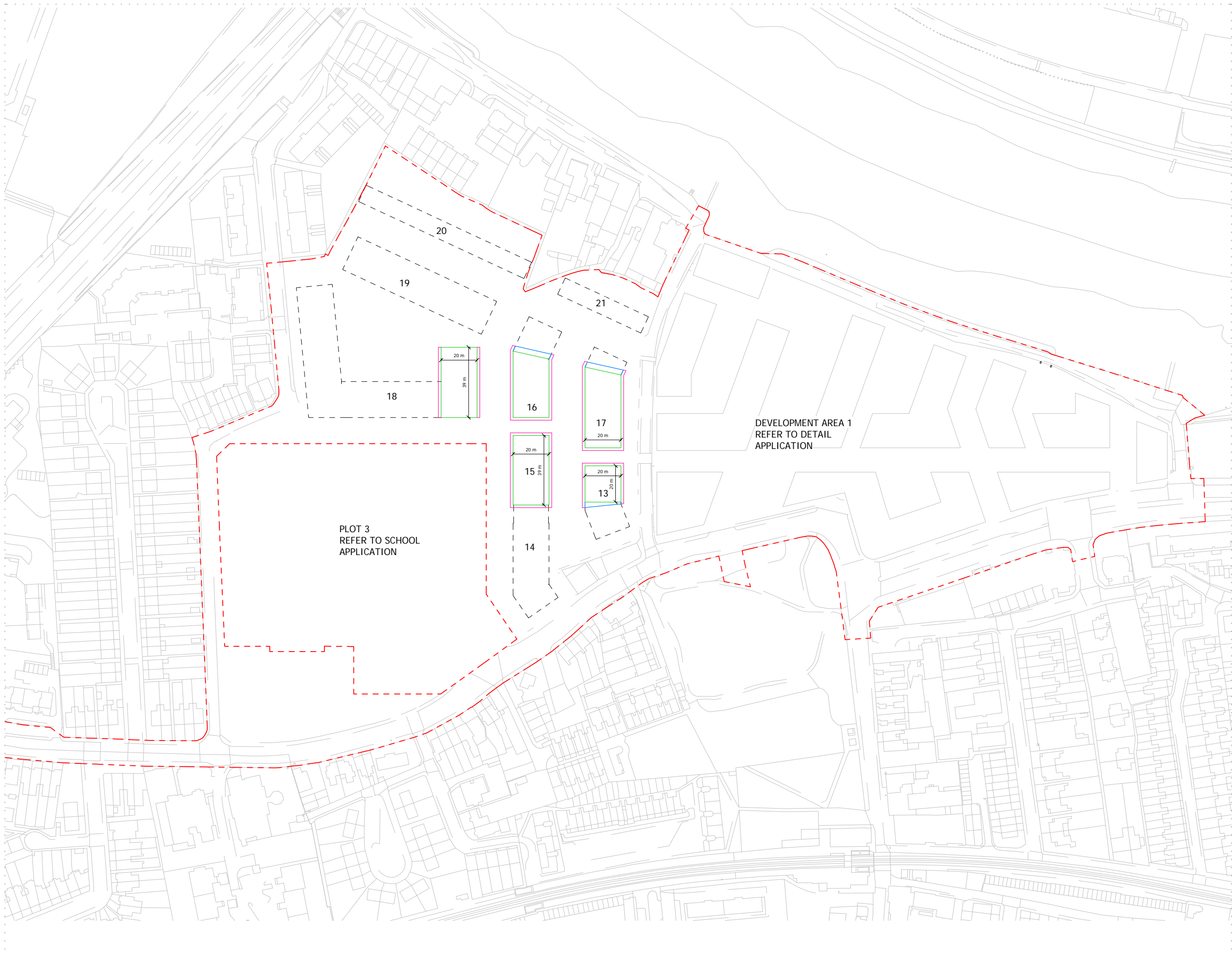
info@squireandpartners.com
 www.squireandpartners.com

Project
Stag Brewery
 Richmond

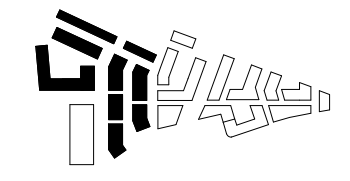
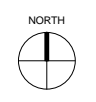
Drawing
BLOCK FOOTPRINT AND HORIZONTAL LINES OF DEVIATION
FOURTH FLOOR

Drawn	Date	Scale
KHO	01/18/18	1 : 1000 @ A1 1 : 2000 @ A3
Job Number	Drawing number	Revision
16019	C645_Z2_P_PR_003	-

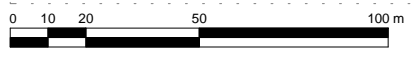




NOTES:
 DO NOT SCALE FROM THIS DRAWING. ALL DIMENSIONS TO BE CHECKED ON SITE. ALL OMISSIONS AND DISCREPANCIES TO BE REPORTED TO THE ARCHITECT IMMEDIATELY.
 ALL RIGHTS RESERVED. THIS WORK IS COPYRIGHT AND CANNOT BE REPRODUCED OR COPIED OR MODIFIED IN ANY FORM OR BY ANY MEANS, GRAPHIC ELECTRONIC OR MECHANICAL, INCLUDING PHOTOCOPIING WITHOUT THE WRITTEN PERMISSION OF SQUIRE AND PARTNERS ARCHITECTS.



- HORIZONTAL LIMITS OF DEVIATION
- MINIMUM BLOCK FOOTPRINT
 - +1.5M FROM MINIMUM BLOCK FOOTPRINT
 - +3.0M FROM MINIMUM BLOCK FOOTPRINT
 - - - BLOCKS BELOW
 - 13-21 BLOCK NUMBER
 - - - PLANNING APPLICATION BOUNDARY



Revision description	Date	Check	Rev
FINAL DRAFT PLANNING APPLICATION	18/01/18	BJ	-

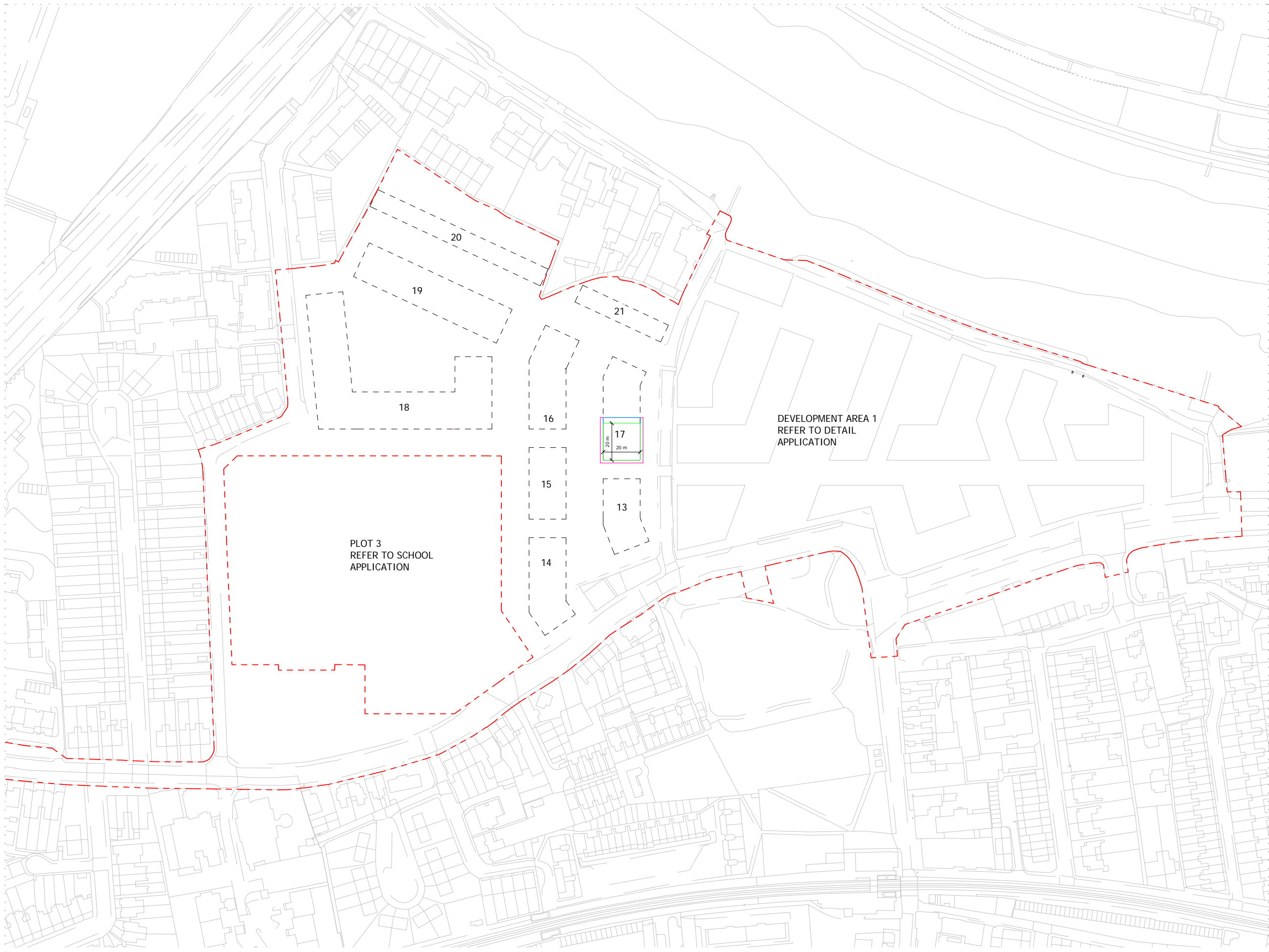
SQUIRE & PARTNERS
 The Department Store
 248 Ferndale Road London SW9 8FR
 T: 020 7278 5555 F: 020 7239 0495

info@squireandpartners.com
 www.squireandpartners.com

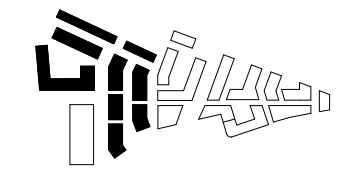
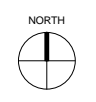
Project
Stag Brewery
 Richmond

Drawing
BLOCK FOOTPRINT AND HORIZONTAL LINES OF DEVIATION FIFTH FLOOR

Drawn	Date	Scale
KHO	01/18/18	1 : 1000 @ A1 1 : 2000 @ A3
Job Number	Drawing number	Revision
16019	C645_Z2_P_PR_004	-



NOTES:
 DO NOT SCALE FROM THIS DRAWING. ALL DIMENSIONS TO BE CHECKED ON SITE. ALL OMISSIONS AND DISCREPANCIES TO BE REPORTED TO THE ARCHITECT IMMEDIATELY.
 ALL RIGHTS RESERVED. THIS WORK IS COPYRIGHT AND CANNOT BE REPRODUCED OR COPIED OR MODIFIED IN ANY FORM OR BY ANY MEANS, GRAPHIC ELECTRONIC OR MECHANICAL, INCLUDING PHOTOCOPIING WITHOUT THE WRITTEN PERMISSION OF SQUIRE AND PARTNERS ARCHITECTS.

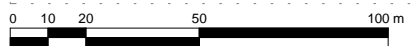


- HORIZONTAL LIMITS OF DEVIATION
- MINIMUM BLOCK FOOTPRINT
 - +1.5M FROM MINIMUM BLOCK FOOTPRINT
 - +3.0M FROM MINIMUM BLOCK FOOTPRINT
 - - - BLOCKS BELOW
 - 13-21 BLOCK NUMBER
 - - - PLANNING APPLICATION BOUNDARY

DEVELOPMENT AREA 1
 REFER TO DETAIL
 APPLICATION

PLOT 3
 REFER TO SCHOOL
 APPLICATION

20m
 20m
 17



Revision description	Date	Check	Rev
FINAL DRAFT PLANNING APPLICATION	18/01/18	BJ	-

SQUIRE & PARTNERS

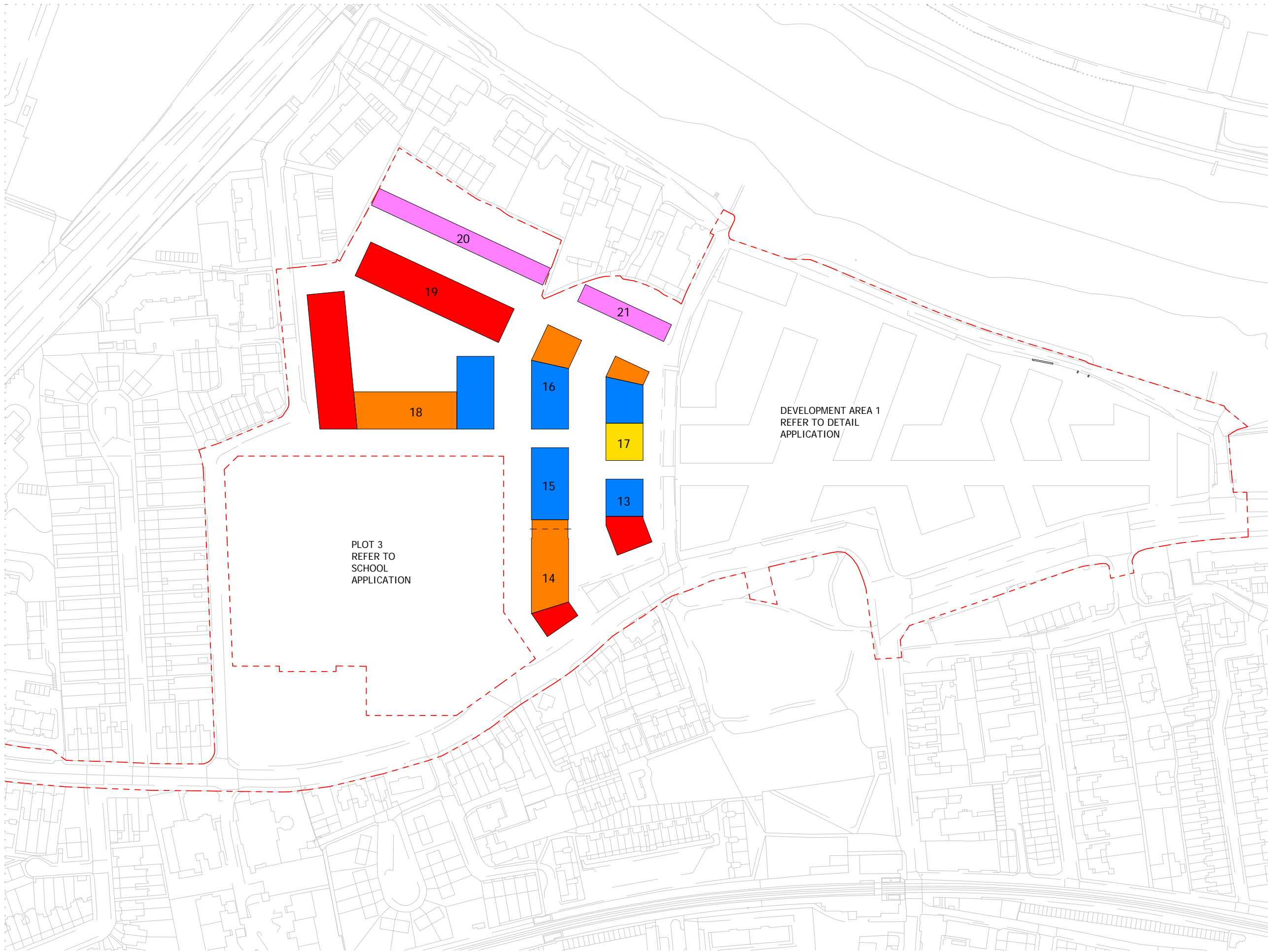
The Department Store
 248 Ferndale Road London SW9 8FR
 T: 020 7278 5555 F: 020 7239 0495

info@squireandpartners.com
 www.squireandpartners.com

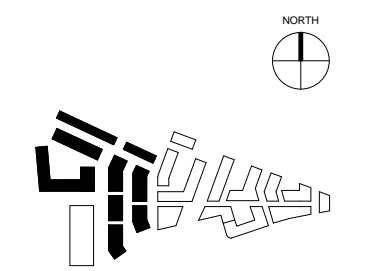
Project
Stag Brewery
 Richmond

Drawing BLOCK FOOTPRINT AND HORIZONTAL LINES OF DEVIATION SIXTH FLOOR

Drawn	Date	Scale
KHO	01/18/18	1 : 1000 @ A1 1 : 2000 @ A3
Job Number	Drawing number	Revision
16019	C645_Z2_P_PR_005	-



NOTES:
 DO NOT SCALE FROM THIS DRAWING. ALL DIMENSIONS TO BE CHECKED ON SITE. ALL OMISSIONS AND DISCREPANCIES TO BE REPORTED TO THE ARCHITECT IMMEDIATELY.
 ALL RIGHTS RESERVED. THIS WORK IS COPYRIGHT AND CANNOT BE REPRODUCED OR COPIED OR MODIFIED IN ANY FORM OR BY ANY MEANS, GRAPHIC ELECTRONIC OR MECHANICAL, INCLUDING PHOTOCOPIING WITHOUT THE WRITTEN PERMISSION OF SQUIRE AND PARTNERS ARCHITECTS.



- VERTICAL LIMITS OF DEVIATION - ABOVE SITE DATUM
- 3 STOREYS
UP TO 12 m FROM BLOCK DATUM TO PARAPET
 - 4 STOREYS
UP TO 16 m FROM BLOCK DATUM TO PARAPET
 - 5 STOREYS
UP TO 19 m FROM BLOCK DATUM TO PARAPET
 - 6 STOREYS
UP TO 22 m FROM BLOCK DATUM TO PARAPET
 - 7 STOREYS
UP TO 26 m FROM BLOCK DATUM TO PARAPET

13-21 BLOCK NUMBER
 --- PLANNING APPLICATION BOUNDARY

NOTE:
 THIS PLAN IS TO BE READ IN CONJUNCTION WITH:
 - BLOCK FOOTPRINT AND HORIZONTAL LINES OF DEVIATION: G100_P_PR_001, 002, 003, 004 & 005
 - DESIGN CODE

PLOT 3
 REFER TO
 SCHOOL
 APPLICATION

DEVELOPMENT AREA 1
 REFER TO DETAIL
 APPLICATION

Revision description	Date	Check	Rev
FINAL DRAFT PLANNING APPLICATION	18/01/18	BJ	-

SQUIRE & PARTNERS
 The Department Store
 248 Ferndale Road London SW9 8FR
 T: 020 7278 5555 F: 020 7239 0495

info@squireandpartners.com
 www.squireandpartners.com
 Project
Stag Brewery
 Richmond

Drawing
**PROPOSED BLOCK HEIGHTS AND
 VERTICAL LINES OF DEVIATION**

Drawn	Date	Scale
KHO	01/18/18	1 : 1000 @ A1 1 : 2000 @ A3
Job Number	Drawing number	Revision
16019	C645_Z2_P_PR_006	-

