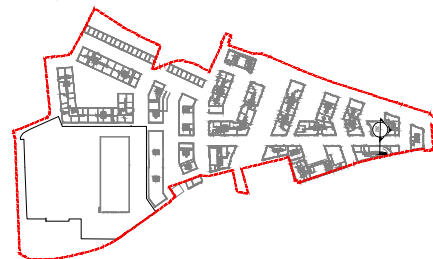


| rev | details | by | date |
|-----|---------------------|----|------------|
| D00 | Issued for Planning | CC | 03.11.2017 |
| D01 | Issued for Planning | RJ | 01.02.2018 |
| D02 | Issued for Planning | RJ | 09.02.2018 |
| | | | |
| | | | |
| | | | |

Notes

- 1.0 All dimensions in millimeters.
- 1.2 Use only dimensions shown.



© copyright GILLESPIES LLP, all rights reserved

STAG BREWERY

Drawing
Proposed Thames Street
Section

| | |
|-------------------------------------|---------------------|
| Drawing number P10736-00-001-202 | |
| Revision D02 | |
| drawing status DESIGN | |
| Date 03.11.17 | Scale 1:100 @ A3 |
| Drawn CC | Checked RC |

Client
DARTMOUTH CAPITAL
Alameda House, 90-100 Sydney Street, London SW3 6NJ
P: 0207 629 0239
F: xxxxxx xxx xxx

GILLESPIES
1 St John's Square, London EC1M 4DH
P 0207 2532929 F 0207 2533900 E design.london@gillespies.co.uk