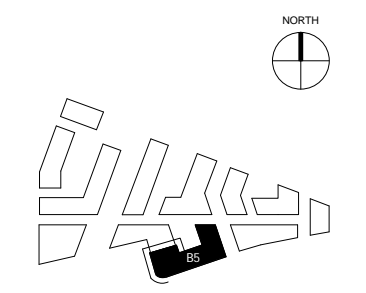
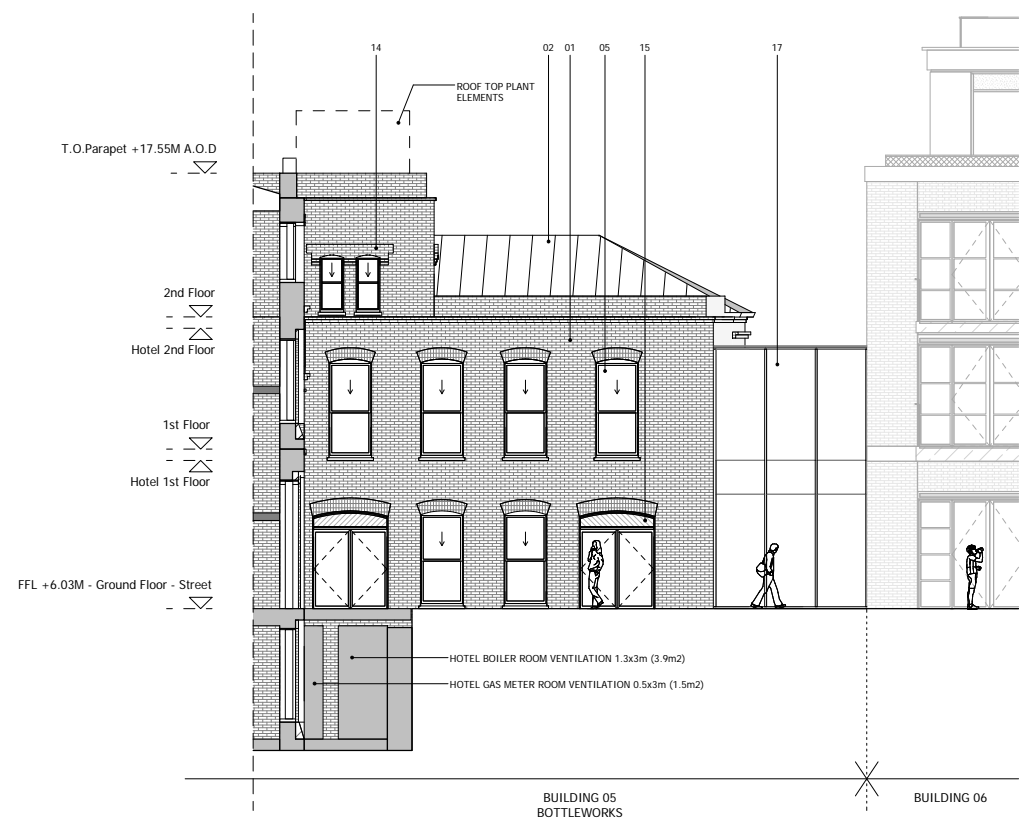


NOTES:
DO NOT SCALE FROM THIS DRAWING. ALL DIMENSIONS TO BE CHECKED ON SITE. ALL OMISSIONS AND DISCREPANCIES TO BE REPORTED TO THE ARCHITECT IMMEDIATELY.
ALL RIGHTS RESERVED. THIS WORK IS COPYRIGHT AND CANNOT BE REPRODUCED OR COPIED OR MODIFIED IN ANY FORM OR BY ANY MEANS, GRAPHIC ELECTRONIC OR MECHANICAL, INCLUDING PHOTOCOPIING WITHOUT THE WRITTEN PERMISSION OF SQUIRE AND PARTNERS ARCHITECTS.



- KEY**
- 01. BRICK WALLS
 - 02. METAL CLAD ROOF
 - 03. HORIZONTAL CONCRETE BAND
 - 04. CLEAR GLAZING WITH GREY PPC ALUMINIUM FRAMES
 - 05. CLEAR GLAZING WITH BRONZE ANODIZED ALUMINIUM FRAMES
 - 06. GLASS BALUSTRADE
 - 07. METAL BALUSTRADE
 - 08. TEXTURED BRICK DETAIL
 - 09. PROFILED METAL CLADDING
 - 10. BRONZE ANODIZED ALUMINIUM PROFILE
 - 11. COLOURED MOSAIC TILES
 - 12. CURTAIN WALL
 - 13. PRE-CAST CONCRETE CLADDING
 - 14. DECORATIVE FRIEZE
 - 15. FASCIA SIGNAGE
 - 16. OBSCURE GLAZING
 - 17. STRUCTURAL GLAZED ROOF

1 PROPOSED HOTEL WEST ELEVATION
1 : 100



3 PROPOSED HOTEL EAST ELEVATION
1 : 100



2 PROPOSED HOTEL NORTH
1 : 100

PLANNING APPLICATION	12/02/18	BJ	-
Revision description	Date	Check	Rev

SQUIRE & PARTNERS
The Department Store
248 Ferndale Road London SW9 8FR
T: 020 7278 5555 F: 020 7239 0495
info@squireandpartners.com
www.squireandpartners.com
Project
Stag Brewery
Richmond

Drawn	Date	Scale
NLe	17/01/18	1 : 100 @ A1 1 : 200 @ A3
Job Number	Drawing number	Revision
16019	C645_B05_E_H_001	-

