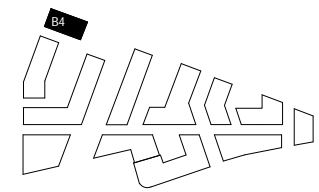




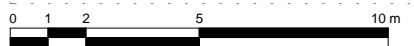
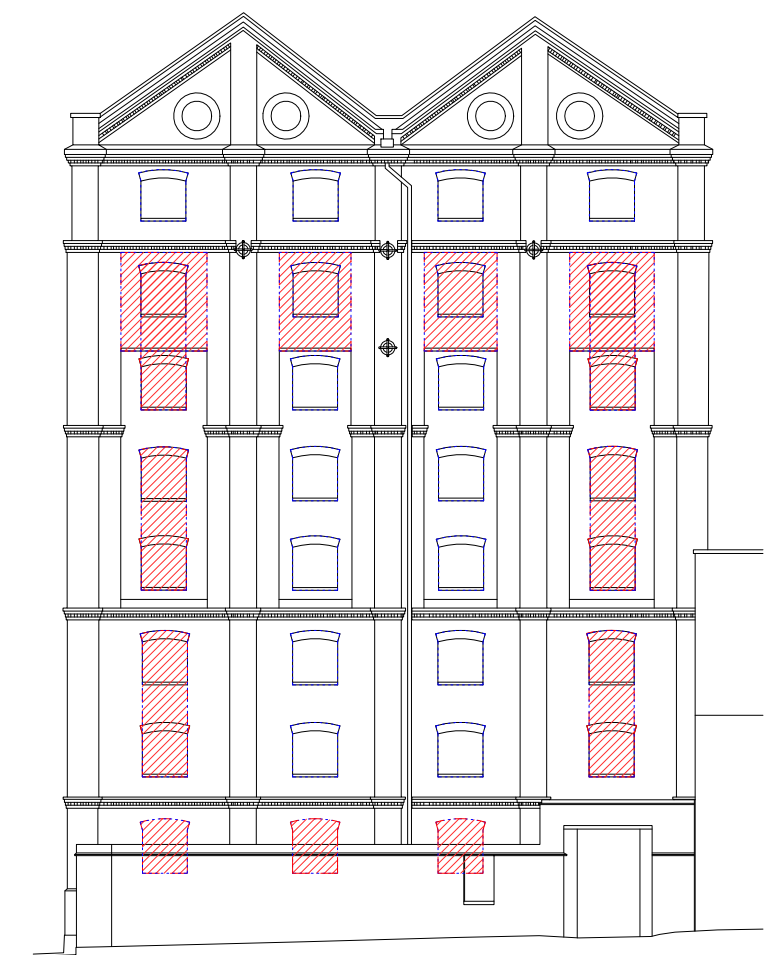
NOTES:  
DO NOT SCALE FROM THIS DRAWING. ALL DIMENSIONS TO BE CHECKED ON SITE. ALL OMISSIONS AND DISCREPANCIES TO BE REPORTED TO THE ARCHITECT IMMEDIATELY.

ALL RIGHTS RESERVED. THIS WORK IS COPYRIGHT AND CANNOT BE REPRODUCED OR COPIED OR MODIFIED IN ANY FORM OR BY ANY MEANS, GRAPHIC ELECTRONIC OR MECHANICAL, INCLUDING PHOTOCOPYING WITHOUT THE WRITTEN PERMISSION OF SQUIRE AND PARTNERS ARCHITECTS.



KEY:-  
 MATERIAL TO BE REPLACED  
 TO BE DEMOLISHED

FFL +5.53M - Ground Floor - Proposed Entrance  
 FFL +4.74M - Ground Floor - Path  
 - -



Revision description	Date	Check	Rev
PLANNING APPLICATION	12/02/18	BJ	-

## SQUIRE & PARTNERS

The Department Store  
 248 Ferndale Road London SW9 8FR  
 T: 020 7278 5555 F: 020 7239 0495

info@squireandpartners.com  
 www.squireandpartners.com

Project  
**Stag Brewery**  
 Richmond

Drawing  
**FORMER MALTINGS BUILDING -  
 EXISTING WEST ELEVATION  
 DEMOLITION**

Drawn	Date	Scale	@ A1
KHO	25/01/18	1 : 100	@ A1
Job Number	Drawing number	Revision	
16019	JA12_B4_E_W_002	-	