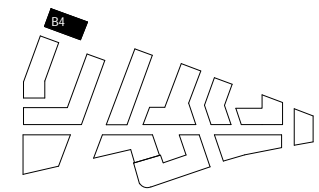
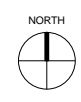
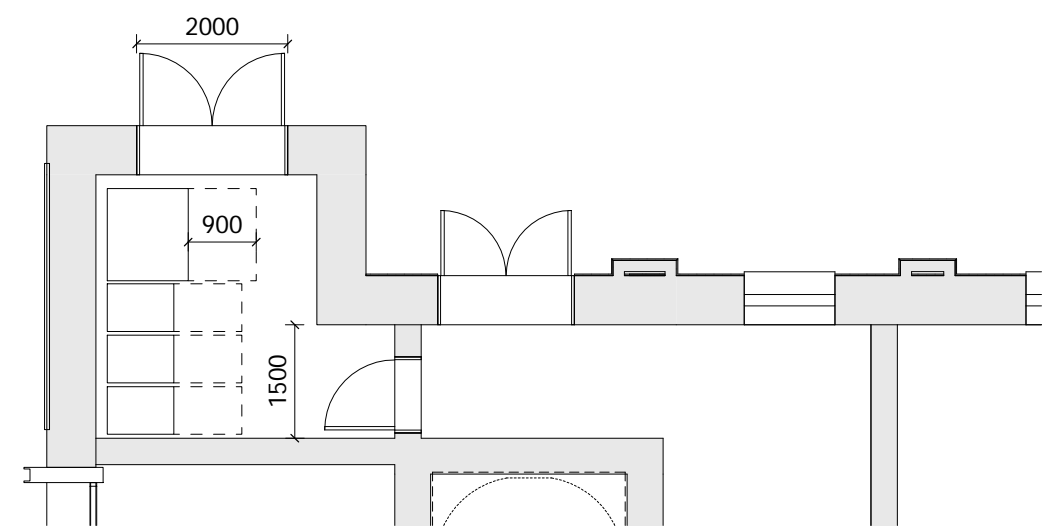


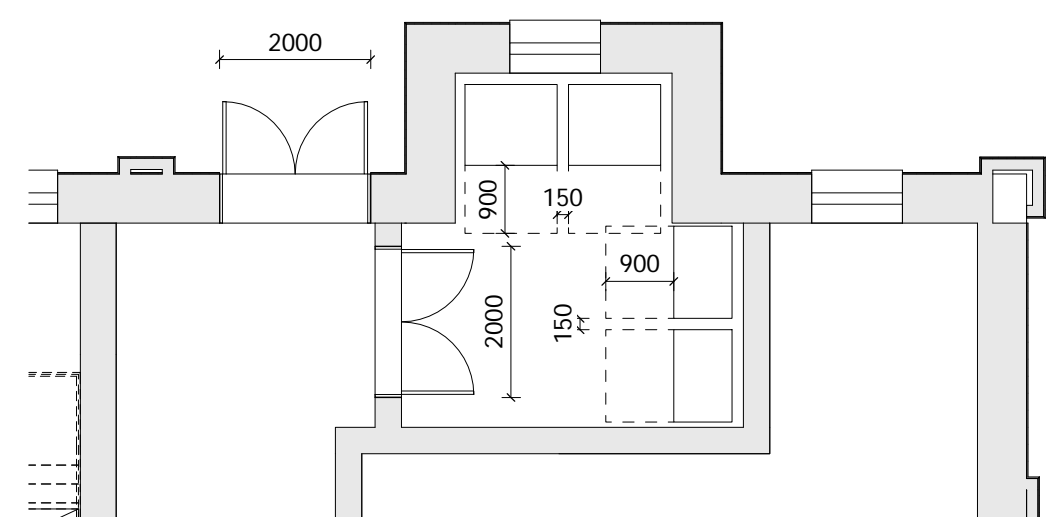
NOTES:  
 DO NOT SCALE FROM THIS DRAWING. ALL DIMENSIONS TO BE CHECKED ON SITE. ALL OMISSIONS AND DISCREPANCIES TO BE REPORTED TO THE ARCHITECT IMMEDIATELY.  
 ALL RIGHTS RESERVED. THIS WORK IS COPYRIGHT AND CANNOT BE REPRODUCED OR COPIED OR MODIFIED IN ANY FORM OR BY ANY MEANS, GRAPHIC ELECTRONIC OR MECHANICAL, INCLUDING PHOTOCOPYING WITHOUT THE WRITTEN PERMISSION OF SQUIRE AND PARTNERS ARCHITECTS.



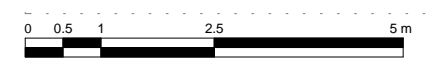
NOTE:-  
 Building 04 refuse store contains 5 Eurobins at 1100 Litres each. This is to serve building 04 only.



1 BLOCK 04 - REFUSE STORE 1  
 1 : 50



2 BLOCK 04 - REFUSE STORE 2  
 1 : 50



Revision description	Date	Check	Rev
PLANNING APPLICATION	12/02/18	BJ	-

## SQUIRE & PARTNERS

The Department Store  
 248 Ferndale Road London SW9 8FR  
 T: 020 7278 5555 F: 020 7239 0495

info@squireandpartners.com  
 www.squireandpartners.com

Project  
 Stag Brewery  
 Richmond

Drawing  
 BUILDING 04 - GROUND FLOOR  
 LEVEL REFUSE STORE PLAN

Drawn	Date	Scale	@ A1
KHO	16/01/18	1 : 50	@ A1
Job Number	Drawing number	Revision	
16019	C645_B04_P_00_002	-	