

DO NOT SCALE

SAFETY, HEALTH AND ENVIRONMENTAL INFORMATION

In addition to the hazards/risks normally associated with the types of work detailed on this drawing, note the following:

CONSTRUCTION

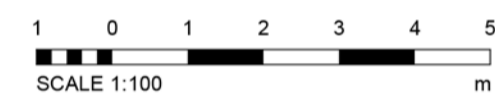
MAINTENANCE/CLEANING

DECOMMISSIONING/DEMOLITION

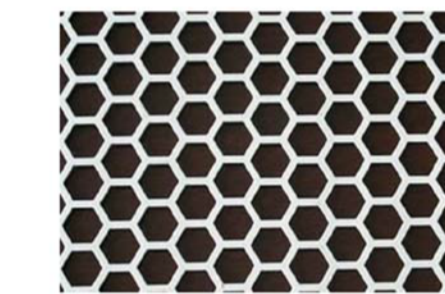
It is assumed that all works will be carried out by a competent contractor working, where appropriate, to an approved method statement



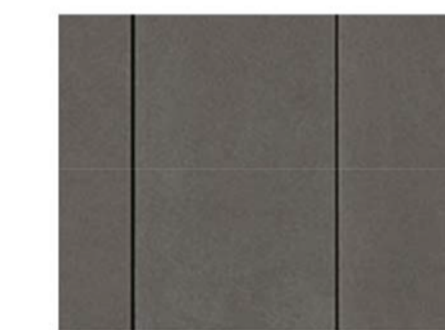
3 EAST ELEVATION
1 : 100



Insulated Metal Panel - Painted Champagne Metallic - Kingspan



Perforated Metal Panel - Painted Champagne Metallic - Kingspan



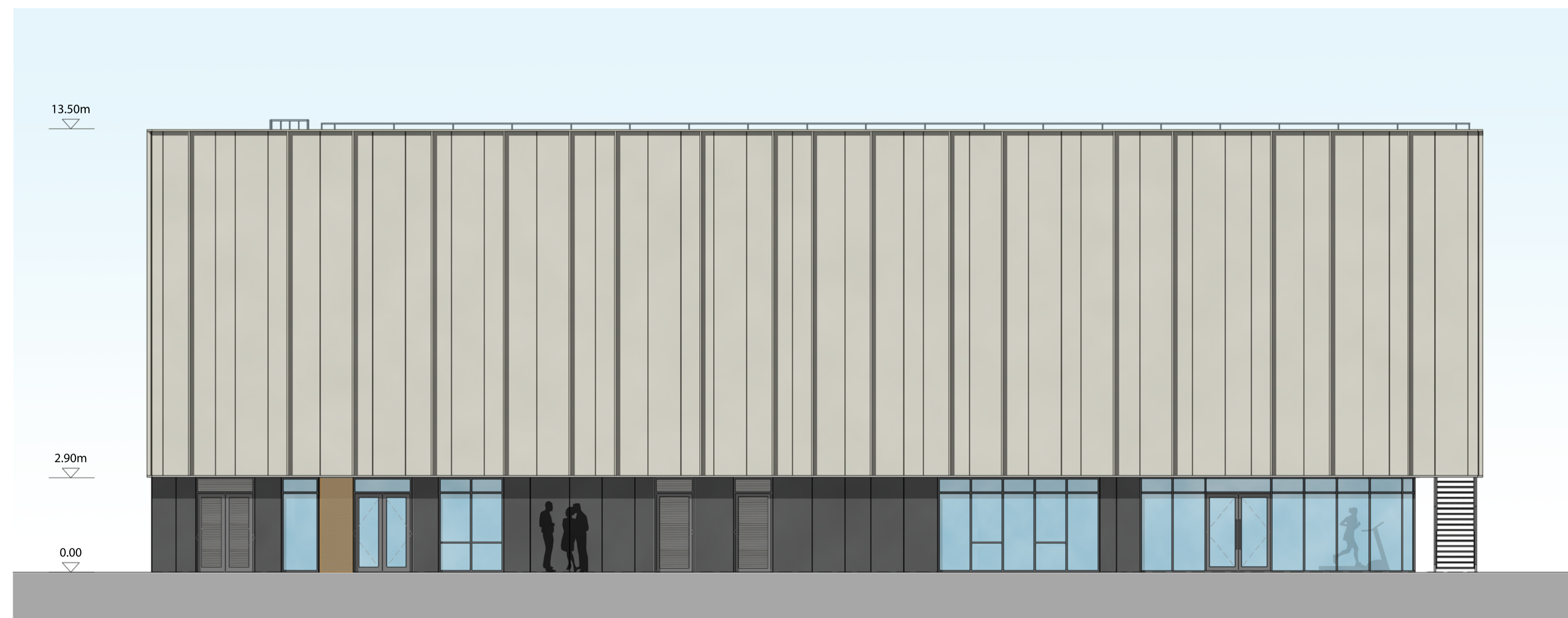
Fibre Cement Panel - Dark Grey - Marley Eternit



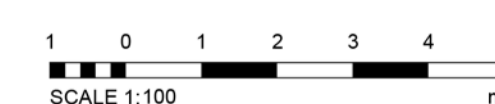
PPC Aluminium Curtain Walling, External Windows and Doors - Grey



Perforated Metal Panel - Painted Grey Illuminated from behind



4 WEST ELEVATION
1 : 100



Rev.	Date	Description	By	Chk'd	App'd
P-1	21/03/2018	WINDOW ARRANGEMENT UPDATED		KD	KH

Drawing Status: **PLANNING** Submittal: **SO**

ATKINS
Euston Road
285 Euston Road
London
NW1 3AT
Tel: +44 (0) 207 121 2000
Fax: +44 (0) 207 121 2111
www.atkinsglobal.com
Copyright © Atkins Limited (2013)

Client:
Richmond upon Thames College
Building Futures ♦ Achieving Ambitions
The Richmond upon Thames School

Project Title:
**RICHMOND UPON THAMES COLLEGE
THE RICHMOND UPON THAMES SCHOOL
SPORTS FACILITY**

Drawing Title:
EAST & WEST ELEVATIONS

Scale	Designed	Drawn	Checked	Authorised
1 : 100	KD	SR	KD	CW
Original Size	Date	Date	Date	Date
A1	16/03/2018	16/03/2018	16/03/2018	16/03/2018
Drawing Number	Revision			
5137894-ATK-SP-ZZ-DR-A-2001	P-1			