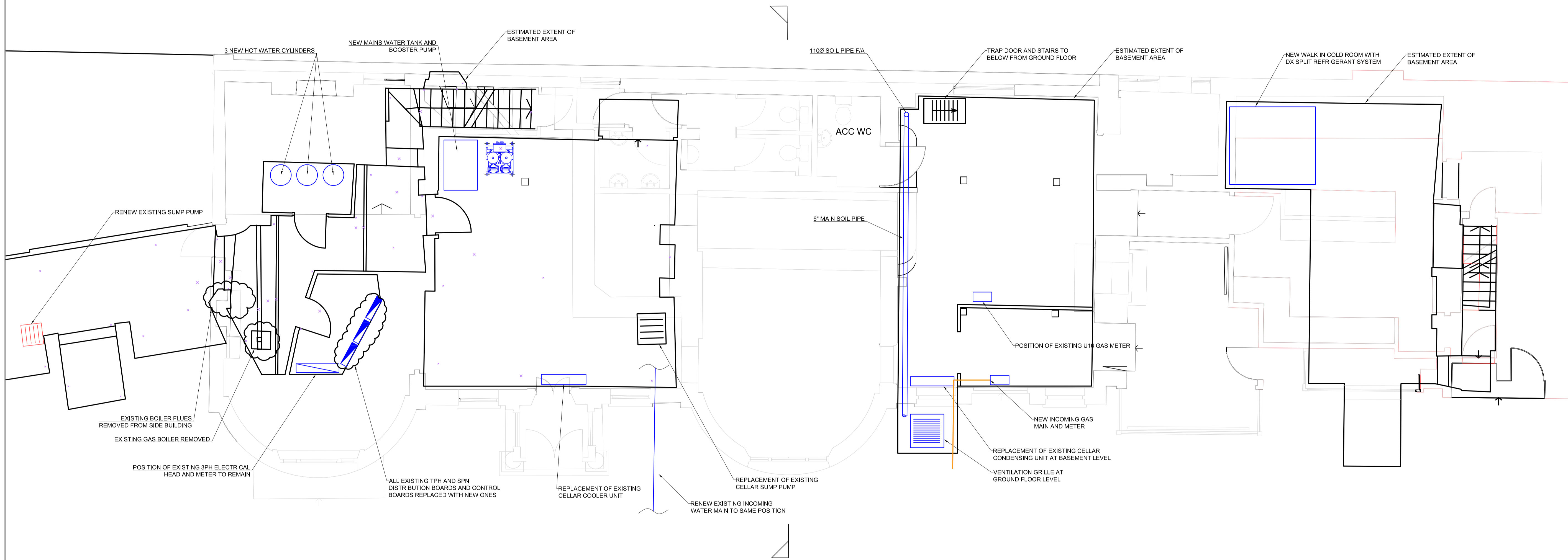


NOTES

- 1) DRAWINGS TO BE READ IN CONJUNCTION WITH SPECIFICATION, ARCHITECT DRAWINGS AND SPECIFICATION AND STRUCTURAL ENGINEERS DRAWINGS
- 2) DO NOT SCALE FROM THIS DRAWING - ALL DIMENSIONS TO BE CHECKED ON SITE.



**PLANNING INFORMATION
BASEMENT WORKS**

- 1) SERVICES AND EQUIPMENT INSTALLATION OR REPLACEMENT AS ABOVE
- 2) REPLACEMENT OF EXISTING ELECTRICAL WIRING THROUGHOUT
- 3) REPLACEMENT OF ALL EXISTING HEATING LTHW, DHWS, CWS, MCWS PIPEWORK
- 4) NEW SUMP PUMPS TO EXISTING GRAVITY SYSTEM AS BEFORE

REV	DESCRIPTION	ISSUED	DATE	BY	CHECKED	DATE	BY
INITIAL ISSUE		23.03	2018				



**MECHANICAL & ELECTRICAL
DESIGN SERVICES**

12 Grosvenor Rise East
London, E17 9LB
Telephone: 020 8520 8862
078 0873 4505
e-mail: INFO@WERNINCK.CO.UK

Project Title
**PLANNING INFORMATION
KINGS ARMS
LONDON**

Drawing Title
**BASEMENT
PLANNING INFORMATION
M&E NOTES FOR PLANNING**

Scale	1:50@A1	Date	APR.2018
Drawing No.	WBS.KA.P01	Revision	0