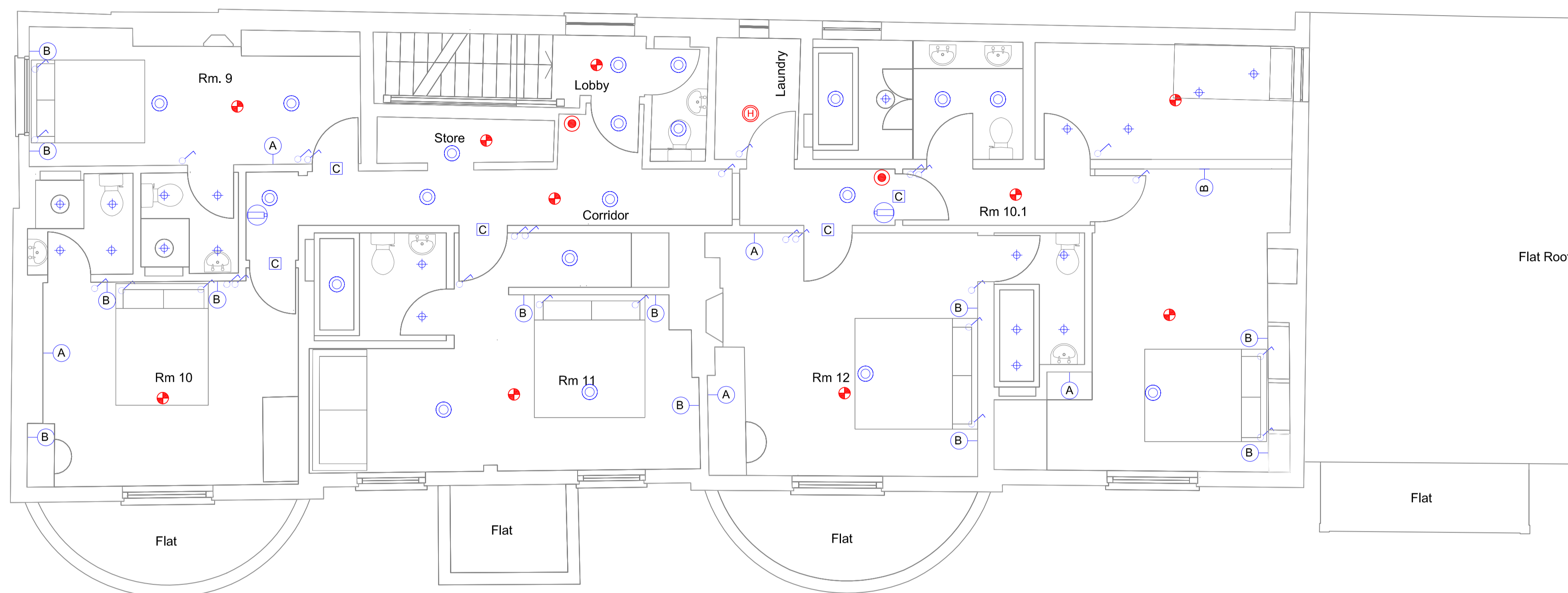


NOTES

- 1) DRAWINGS TO BE READ IN CONJUNCTION WITH SPECIFICATION, ARCHITECT DRAWINGS AND SPECIFICATION AND STRUCTURAL ENGINEERS DRAWINGS
- 2) DO NOT SCALE FROM THIS DRAWING - ALL DIMENSIONS TO BE CHECKED ON SITE.



SECOND FLOOR

Notes and Key

1. The contractor shall ensure that the electrical installation is designed and installed in compliance with BS 7671:2008+A3:2015 and Building Regulations.
2. Fire alarm cables shall be red sheathed Draka Firetuff or similar installed within metal or plastic cable containment.
3. There shall be energy efficient lighting to provide the design criteria throughout the building controlled by local switches. There shall be emergency lighting installed throughout the building that shall comply with BS5266 with key operated test switches. In plant rooms the Contractor shall install new self-contained battery emergency lighting with 3 hour battery packs in the plantrooms to achieve 15 lux. All luminaires shall be connected via a proprietary lighting plug and socket arrangement
4. The contractor shall ascertain the supply capacity is adequate for the proposed installed load and shall determine the Ze at the incomer to ensure protective devices will disconnect in earth fault and phase fault conditions within the required disconnection times.
5. All cables shall be designated as zero halogen low smoke and fume LSF and all cables shall be concealed in walls, partitions or ceiling voids and cables shall not be installed surface.
6. All final circuits supplying socket outlets and fused connection units shall be protected with RCBO type circuit protective devices that combine the features of a miniature circuit breaker with a 30mA residual current device. The RCBO protective devices shall only occupy one single way in the distribution boards.
7. Final circuits shall be connected to distribution boards. The distribution boards shall be located in the ELECTRICAL CUPBOARDS. All power data and lighting positions will be finalised on site to suit layouts.

- Surface mounted linear light fitting suitable for kitchens
- Pendant
- Wall light
- Switched Wall Light
- Downlight
- Smoke detector with combined base sounder and beacon;
- Heat detector with combined base sounder and beacon;
- Manual breakglass call point;
- Fire Alarm Panel
- Wall light switch
- Single switched socket outlet
- Twin switched socket outlet
- Shaver Socket
- Single 13A unswitched fused connection unit for towel rails and fans
- TV point
- New Distribution Boards (one for each floor)
- Blank Point
- Keycard door handle
- Alarm Face
- Internal Dome Camera

REV.	DESCRIPTION	ISSUED BY	CHECKED BY	DATE
1	REVISED SECOND FLOOR LAYOUT			05.07.2018
-	INITIAL ISSUE			27.03.2018

**MECHANICAL & ELECTRICAL DESIGN SERVICES**

5 SYON COURT, THE AVENUE  
London, E11 2EE

Telephone: 0203 719 5418  
078 0873 4505

e-mail: ROD@WERNINCK.CO.UK

Project Title		PLANNING INFORMATION KINGS ARMS LONDON	
Drawing Title		SECOND FLOOR - RCP03 PLANNING INFORMATION ELECTRICAL SERVICES	
Scale	1:50@A1	Date	JUL.2018
Drawing No.	WBS.KA.RCP03	Revision	1