

Surrey

Published 1920

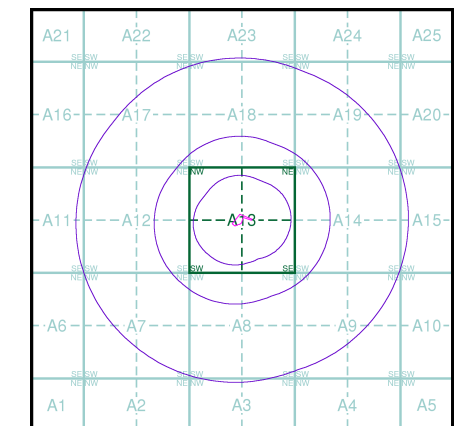
Source map scale - 1:10,560

The historical maps shown were reproduced from maps predominantly held at the scale adopted for England, Wales and Scotland in the 1840's. In 1854 the 1:2,500 scale was adopted for mapping urban areas; these maps were used to update the 1:10,560 maps. The published date given therefore is often some years later than the surveyed date. Before 1938, all OS maps were based on the Cassini Projection, with independent surveys of a single county or group of counties, giving rise to significant inaccuracies in outlying areas. In the late 1940's, a Provisional Edition was produced, which updated the 1:10,560 mapping from a number of sources. The maps appear unfinished - with all military camps and other strategic sites removed. These maps were initially overprinted with the National Grid. In 1970, the first 1:10,000 maps were produced using the Transverse Mercator Projection. The revision process continued until recently, with new editions appearing every 10 years or so for urban areas.

Map Name(s) and Date(s)

001SE	1920	1:10,560
006NE	1920	1:10,560

Historical Map - Slice A

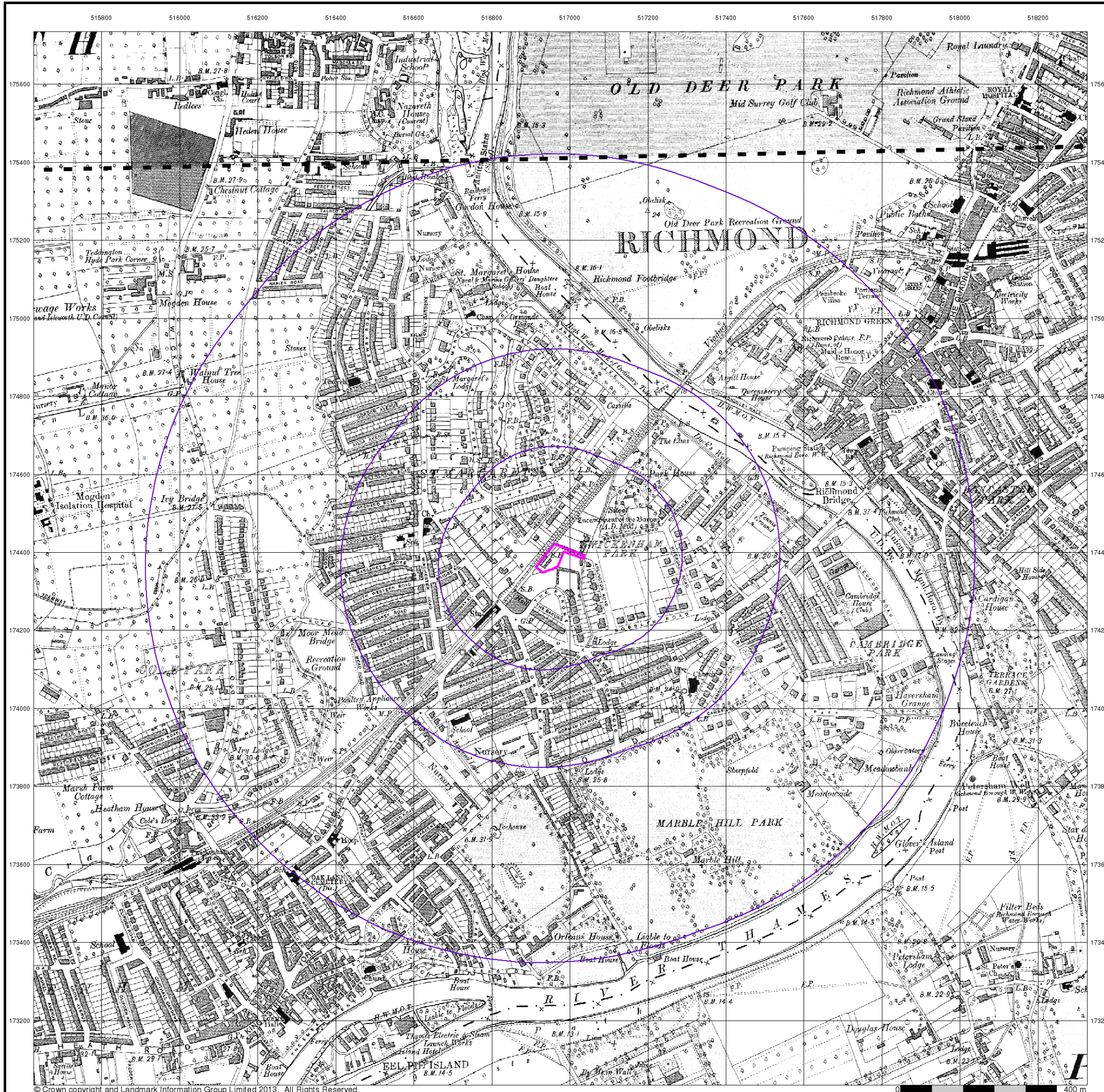


Order Details

Order Number:	62647315_1_1
Customer Ref:	LP851
National Grid Reference:	516970, 174380
Slice:	A
Site Area (Ha):	0.33
Search Buffer (m):	1000

Site Details

Sharpe Refinery Services, Arlington Works, 23 Arlington Road, TWICKENHAM, TW1 2BB



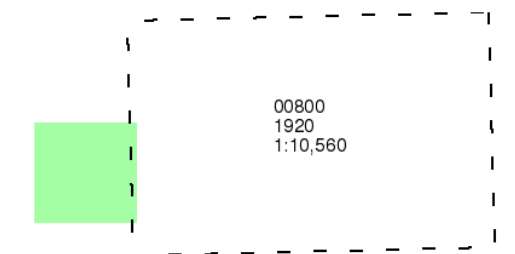
London

Published 1920

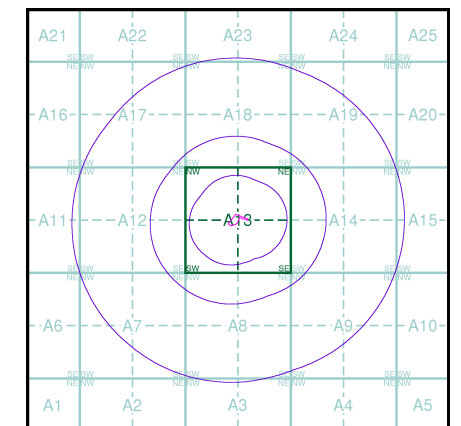
Source map scale - 1:10,560

The historical maps shown were reproduced from maps predominantly held at the scale adopted for England, Wales and Scotland in the 1840's. In 1854 the 1:2,500 scale was adopted for mapping urban areas; these maps were used to update the 1:10,560 maps. The published date given therefore is often some years later than the surveyed date. Before 1938, all OS maps were based on the Cassini Projection, with independent surveys of a single county or group of counties, giving rise to significant inaccuracies in outlying areas. In the late 1940's, a Provisional Edition was produced, which updated the 1:10,560 mapping from a number of sources. The maps appear unfinished - with all military camps and other strategic sites removed. These maps were initially overprinted with the National Grid. In 1970, the first 1:10,000 maps were produced using the Transverse Mercator Projection. The revision process continued until recently, with new editions appearing every 10 years or so for urban areas.

Map Name(s) and Date(s)



Historical Map - Slice A

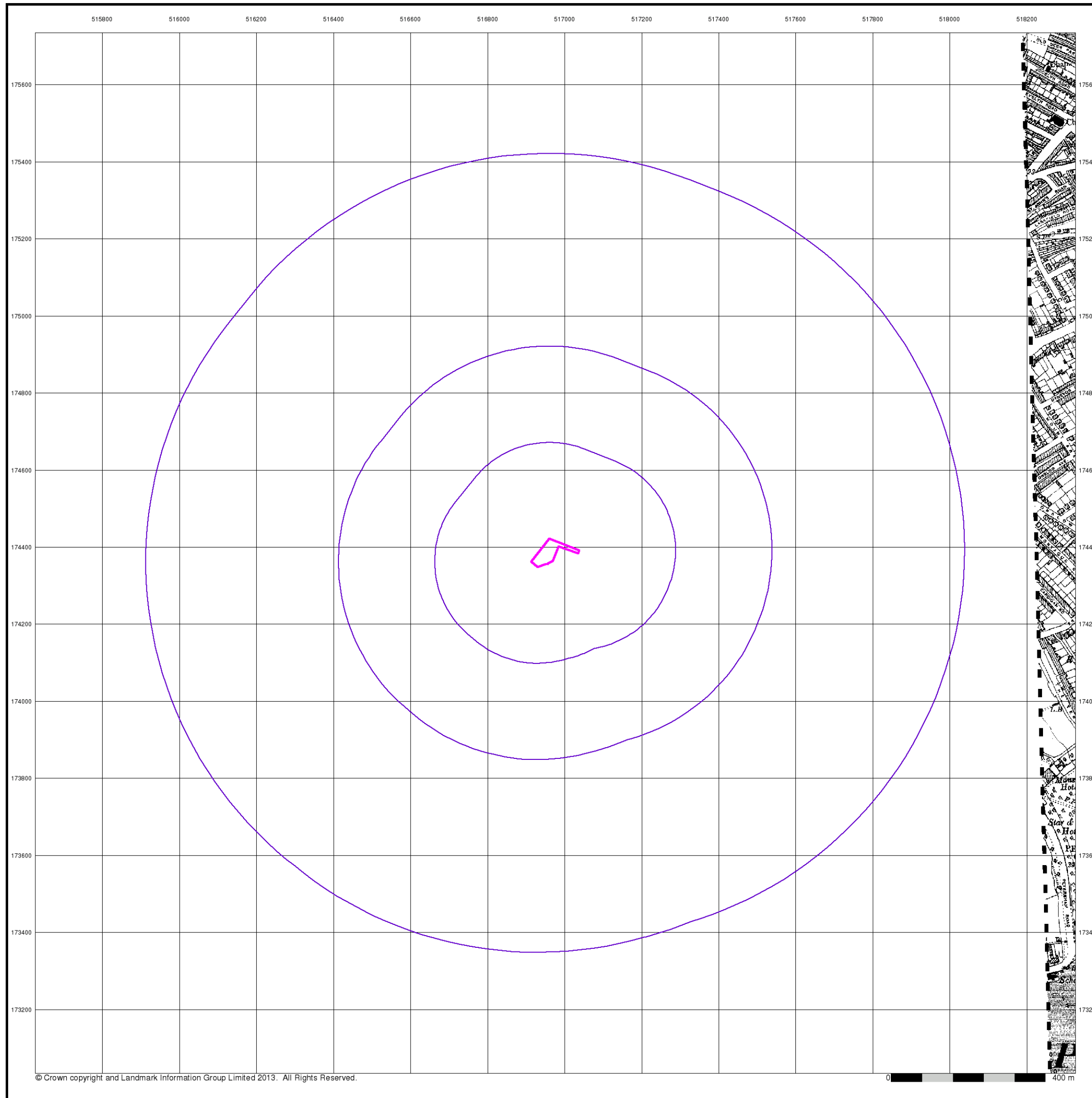


Order Details

Order Number: 62647315_1_1
 Customer Ref: LP851
 National Grid Reference: 516970, 174380
 Slice: A
 Site Area (Ha): 0.33
 Search Buffer (m): 1000

Site Details

Sharpe Refinery Services, Arlington Works, 23 Arlington Road, TWICKENHAM, TW1 2BB



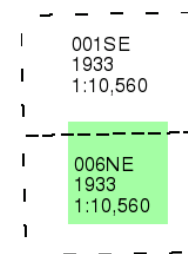
Surrey

Published 1933

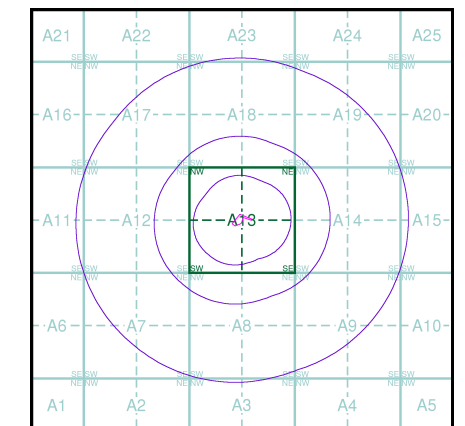
Source map scale - 1:10,560

The historical maps shown were reproduced from maps predominantly held at the scale adopted for England, Wales and Scotland in the 1840's. In 1854 the 1:2,500 scale was adopted for mapping urban areas; these maps were used to update the 1:10,560 maps. The published date given therefore is often some years later than the surveyed date. Before 1938, all OS maps were based on the Cassini Projection, with independent surveys of a single county or group of counties, giving rise to significant inaccuracies in outlying areas. In the late 1940's, a Provisional Edition was produced, which updated the 1:10,560 mapping from a number of sources. The maps appear unfinished - with all military camps and other strategic sites removed. These maps were initially overprinted with the National Grid. In 1970, the first 1:10,000 maps were produced using the Transverse Mercator Projection. The revision process continued until recently, with new editions appearing every 10 years or so for urban areas.

Map Name(s) and Date(s)



Historical Map - Slice A

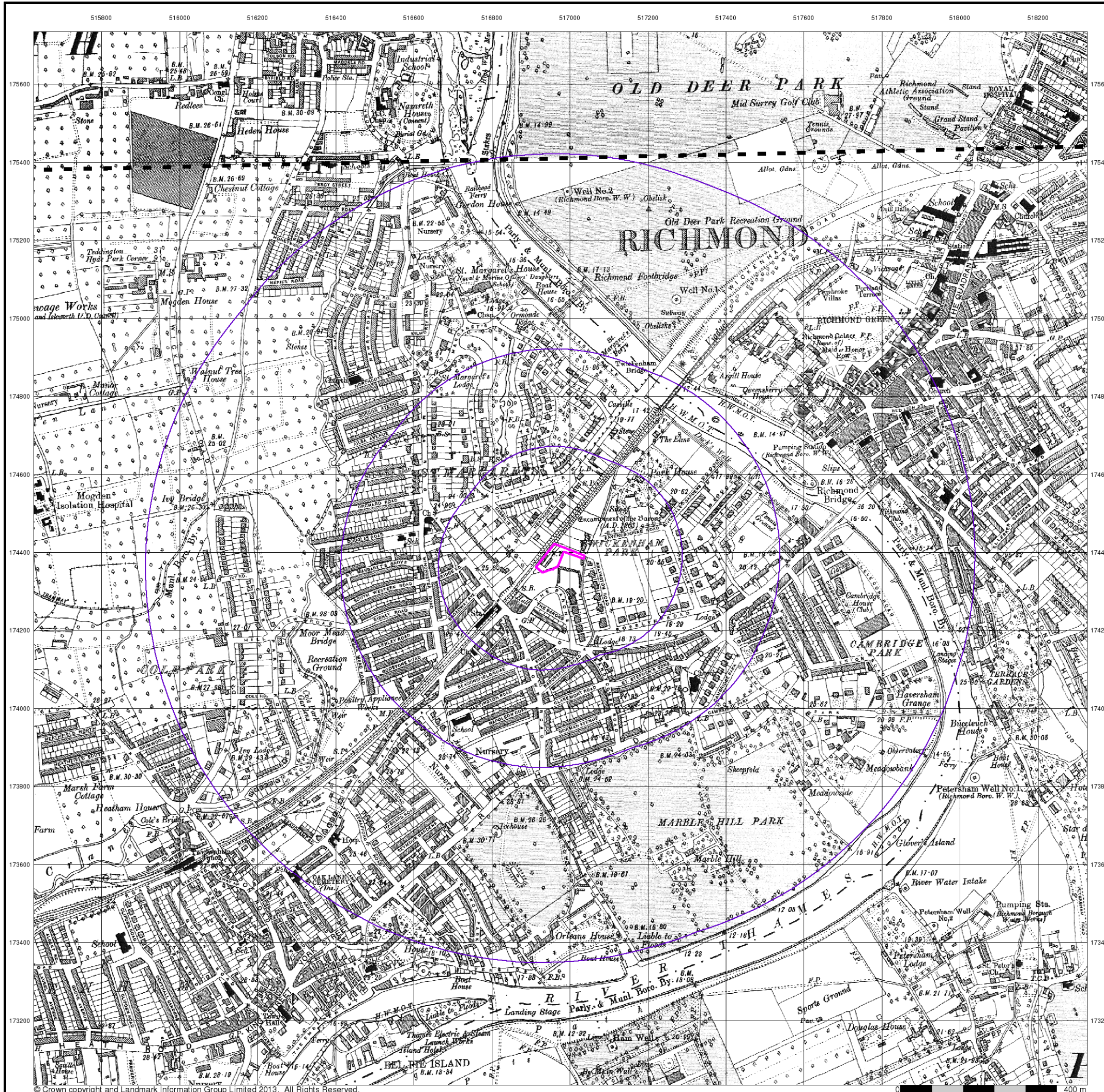


Order Details

Order Number: 62647315_1_1
 Customer Ref: LP851
 National Grid Reference: 516970, 174380
 Slice: A
 Site Area (Ha): 0.33
 Search Buffer (m): 1000

Site Details

Sharpe Refinery Services, Arlington Works, 23 Arlington Road, TWICKENHAM, TW1 2BB



Middlesex

Published 1935

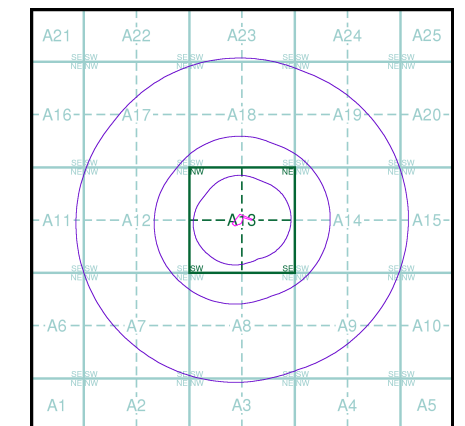
Source map scale - 1:10,560

The historical maps shown were reproduced from maps predominantly held at the scale adopted for England, Wales and Scotland in the 1840's. In 1854 the 1:2,500 scale was adopted for mapping urban areas; these maps were used to update the 1:10,560 maps. The published date given therefore is often some years later than the surveyed date. Before 1938, all OS maps were based on the Cassini Projection, with independent surveys of a single county or group of counties, giving rise to significant inaccuracies in outlying areas. In the late 1940's, a Provisional Edition was produced, which updated the 1:10,560 mapping from a number of sources. The maps appear unfinished - with all military camps and other strategic sites removed. These maps were initially overprinted with the National Grid. In 1970, the first 1:10,000 maps were produced using the Transverse Mercator Projection. The revision process continued until recently, with new editions appearing every 10 years or so for urban areas.

Map Name(s) and Date(s)

020NE	1935	1:10,560
020SE	1935	1:10,560

Historical Map - Slice A



Order Details

Order Number: 62647315_1_1
 Customer Ref: LP851
 National Grid Reference: 516970, 174380
 Slice: A
 Site Area (Ha): 0.33
 Search Buffer (m): 1000

Site Details

Sharpe Refinery Services, Arlington Works, 23 Arlington Road, TWICKENHAM, TW1 2BB

