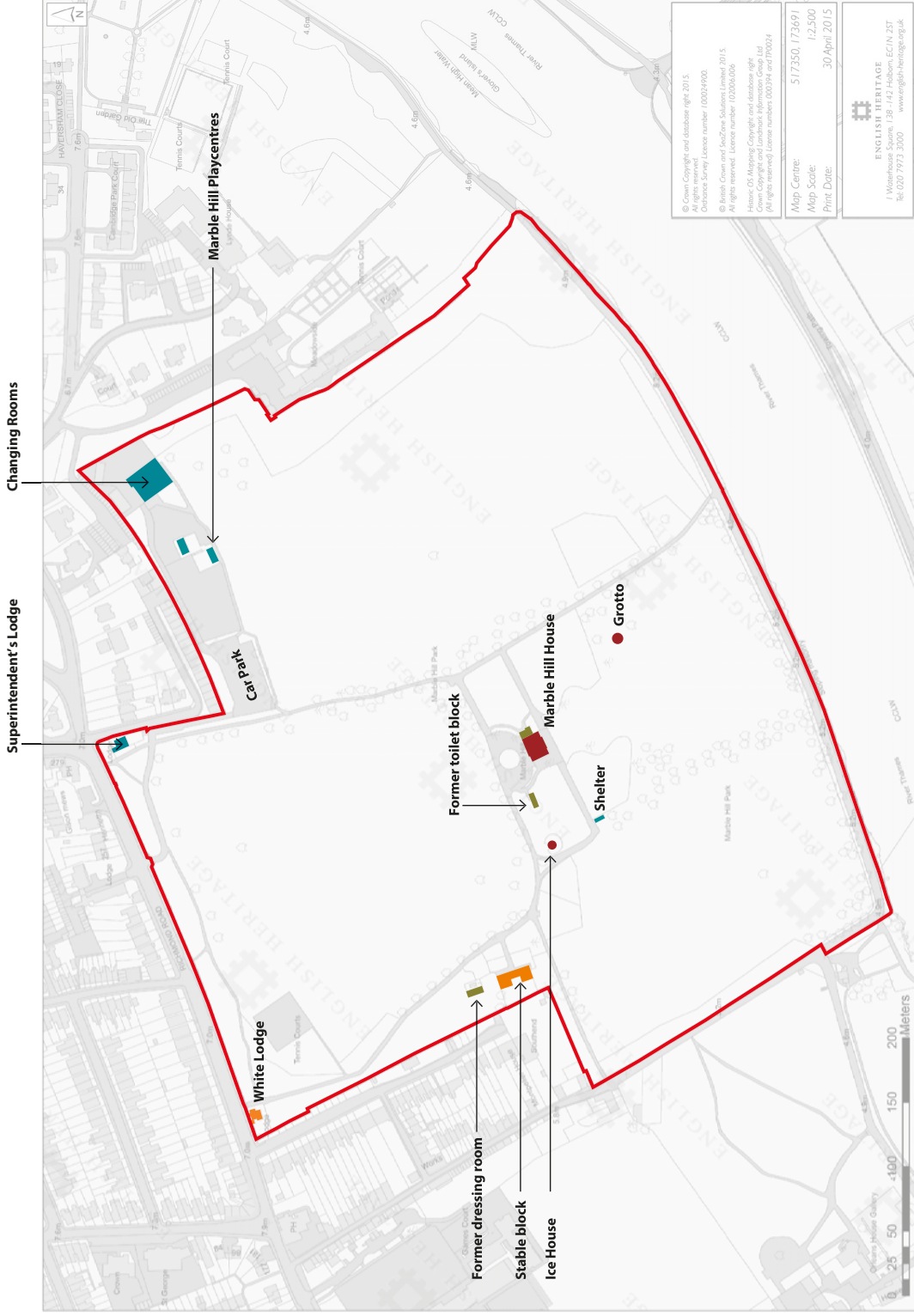


# Marble Hill Site Phasing



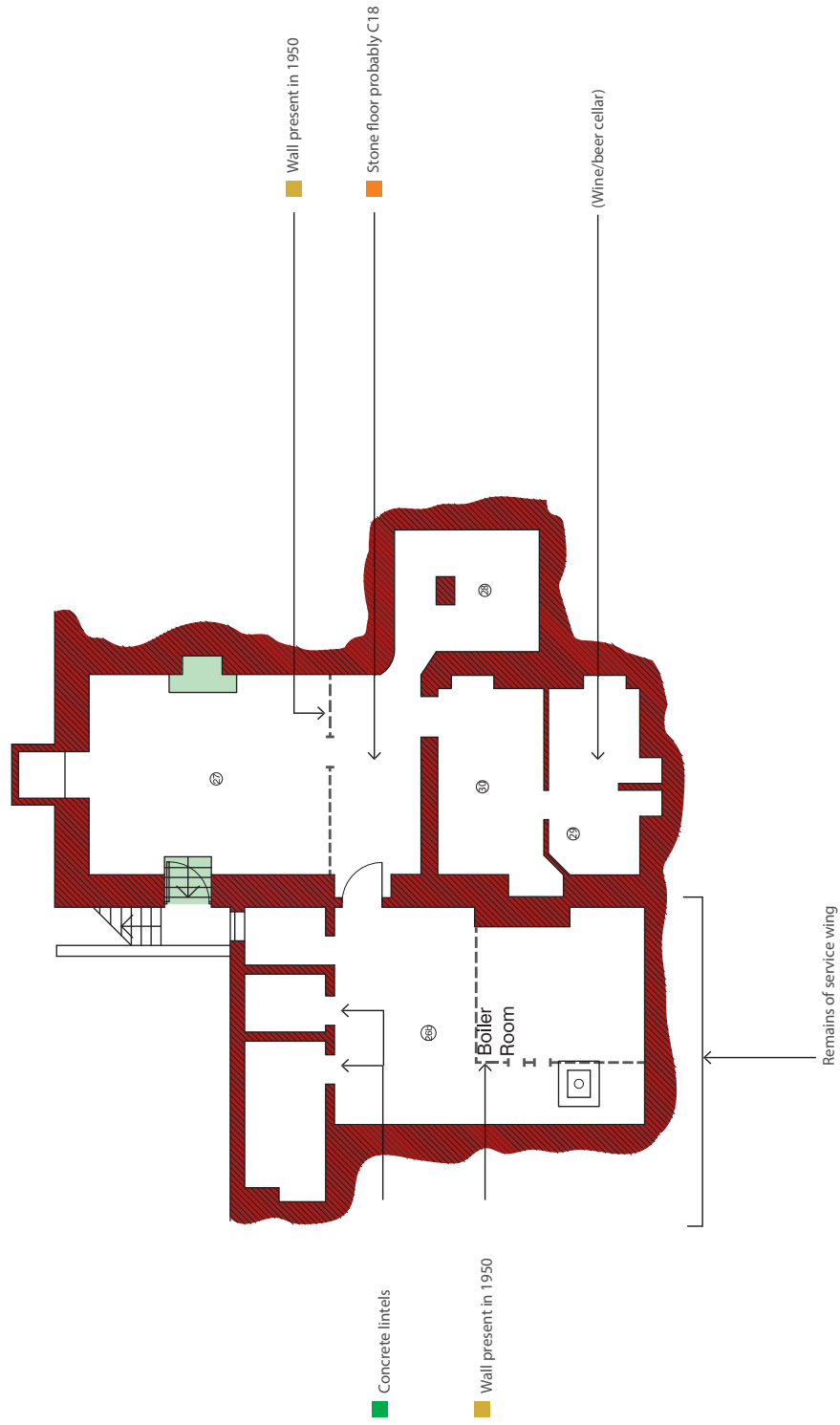
- █ Guardianship boundary
- █ 1720s-40s Henretta Howard
- █ 1825-27 Jonathan Peel
- █ 1900-1930s
- █ 1950s-1970s



# Marble Hill Basement Phasing



- 1720s-1740s Henrietta Howard
- 1750 Alterations
- 1767-1815 Earl of Buckingham/Henrietta Hotham
- 1900-1910 LCC
- 1950s GLC restoration of house
- 1964-1966 GLC restoration of house
- 1970 onward
- Date unknown





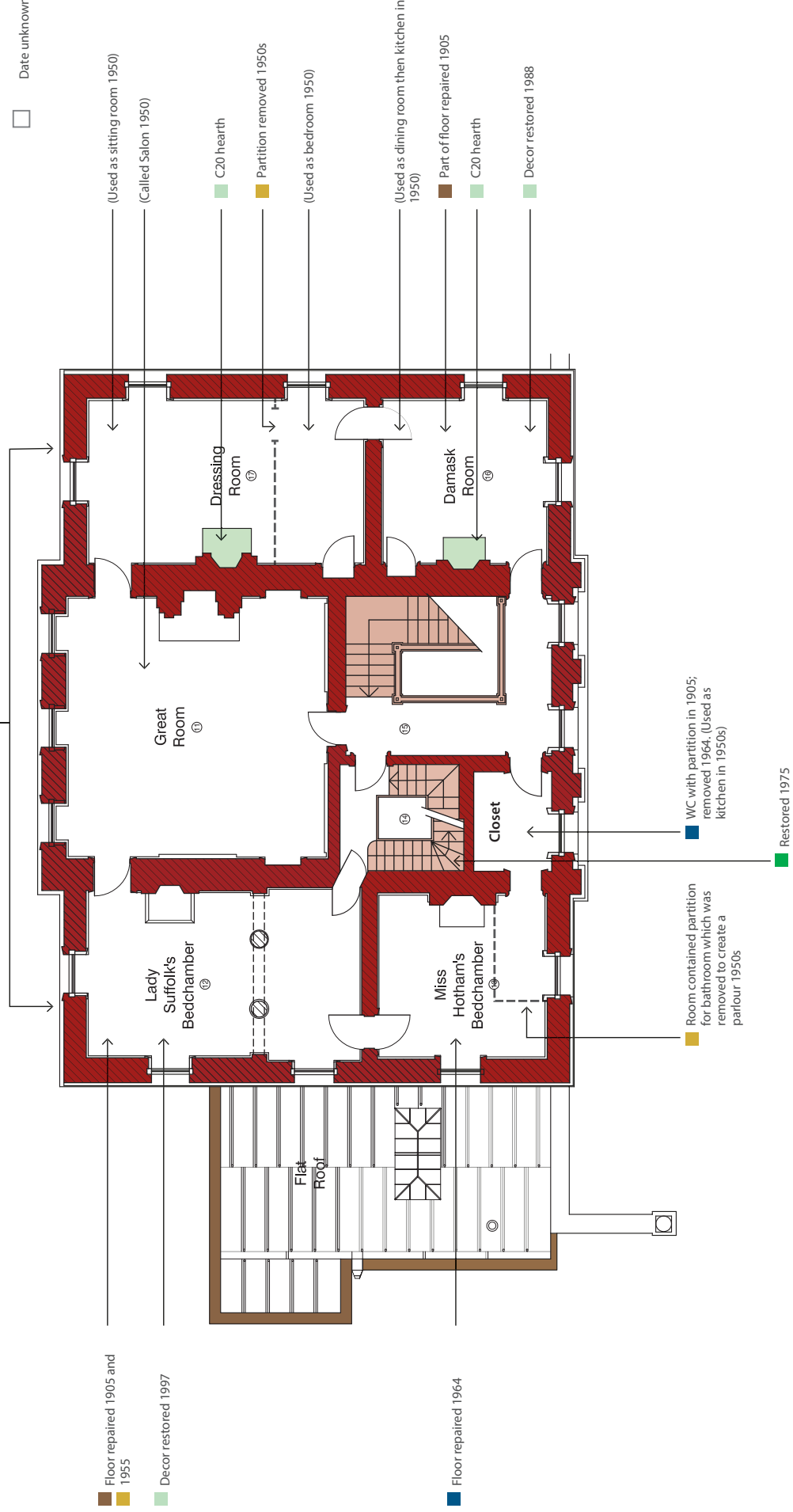
# Marble Hill First Floor Phasing



- 1955 All ceilings apart from Great Room repaired following dry rot
- 1965 Modillions & pediment cartouches replaced in fibreglass

- 1750 replacement of balconied doors with windows; remodelled again 1767-1815; again in 1964-5 when they were reduced in height and had new sashes

- 1720s-1740s Henrietta Howard
- 1750 Alterations
- 1767-1815 Earl of Buckingham/Henrietta Hotham
- 1900-1910 LCC
- 1950s GLC restoration of house
- 1964-1966 GLC restoration of house
- 1970 onward
- Date unknown



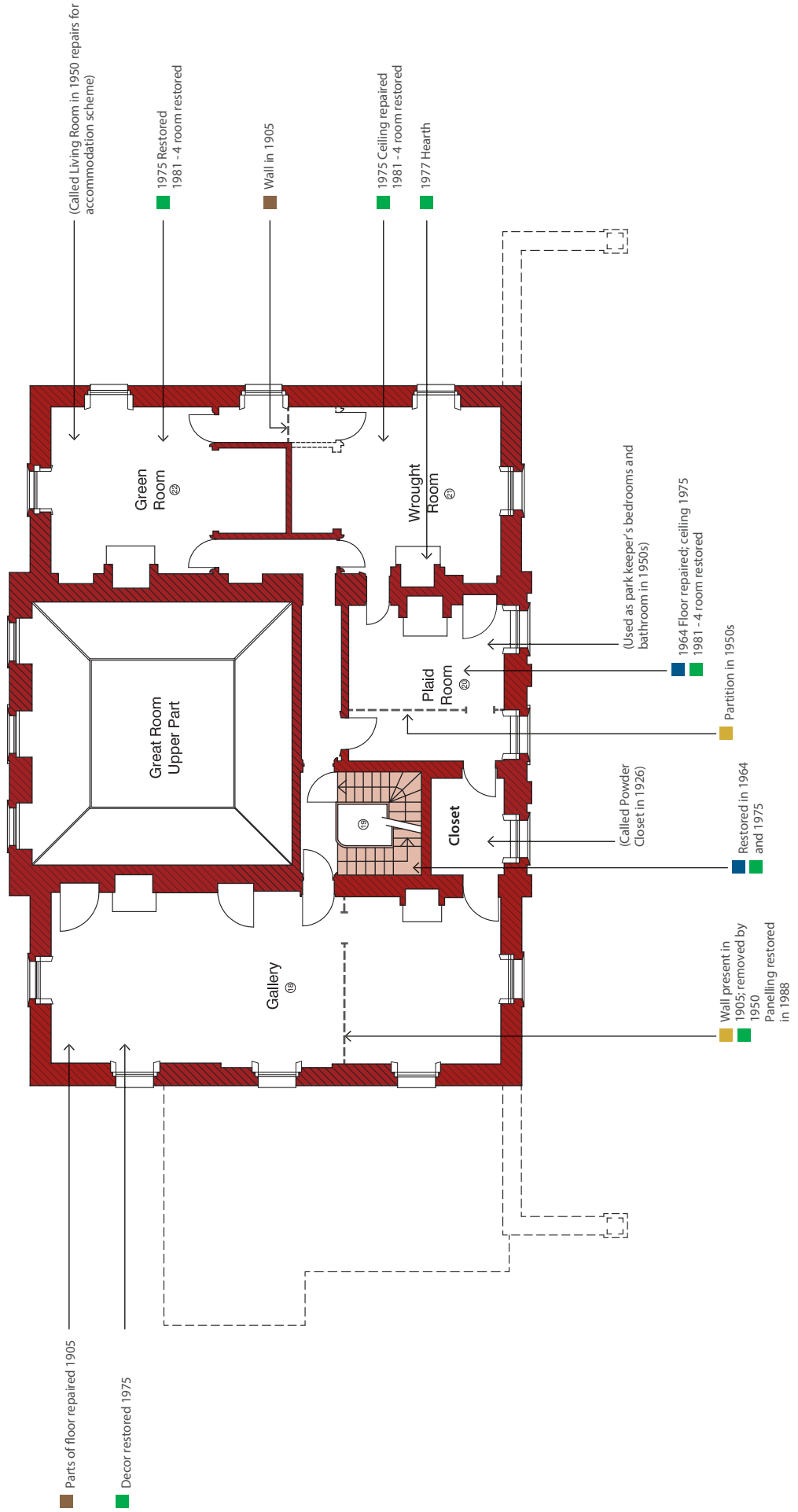
- Floor repaired 1905 and 1955
- Decor restored 1997

- Floor repaired 1964

# Marble Hill Second Floor Phasing



- 1720s-1740s Henrietta Howard
- 1750 Alterations
- 1767-1815 Earl of Buckingham/Henrietta Hotham
- 1900-1910 LCC
- 1950s GLC restoration of house
- 1964-1966 GLC restoration of house
- 1970 onward
- Date unknown



# Marble Hill Third Floor Phasing

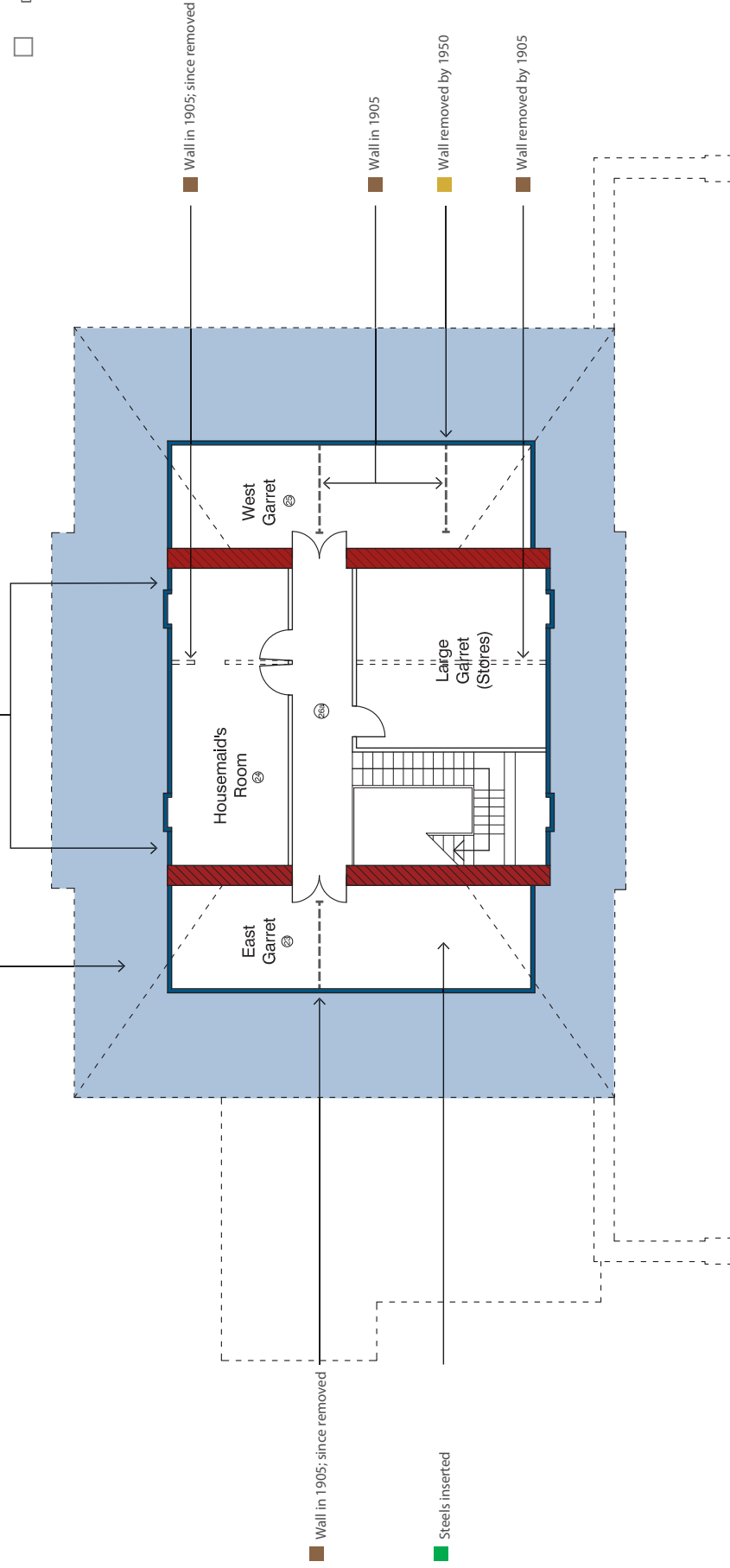


1964 All floorboards replaced

1965 Roof retiled and chimneys rebuilt

1964 All dormer casements removed and replaced with sashes

- 1720s-1740s Henrietta Howard
- 1750 Alterations
- 1767-1815 Earl of Buckingham/Henrietta Hotham
- 1900-1910 LCC
- 1950s GLC restoration of house
- 1964-1966 GLC restoration of house
- 1970 onward
- Date unknown

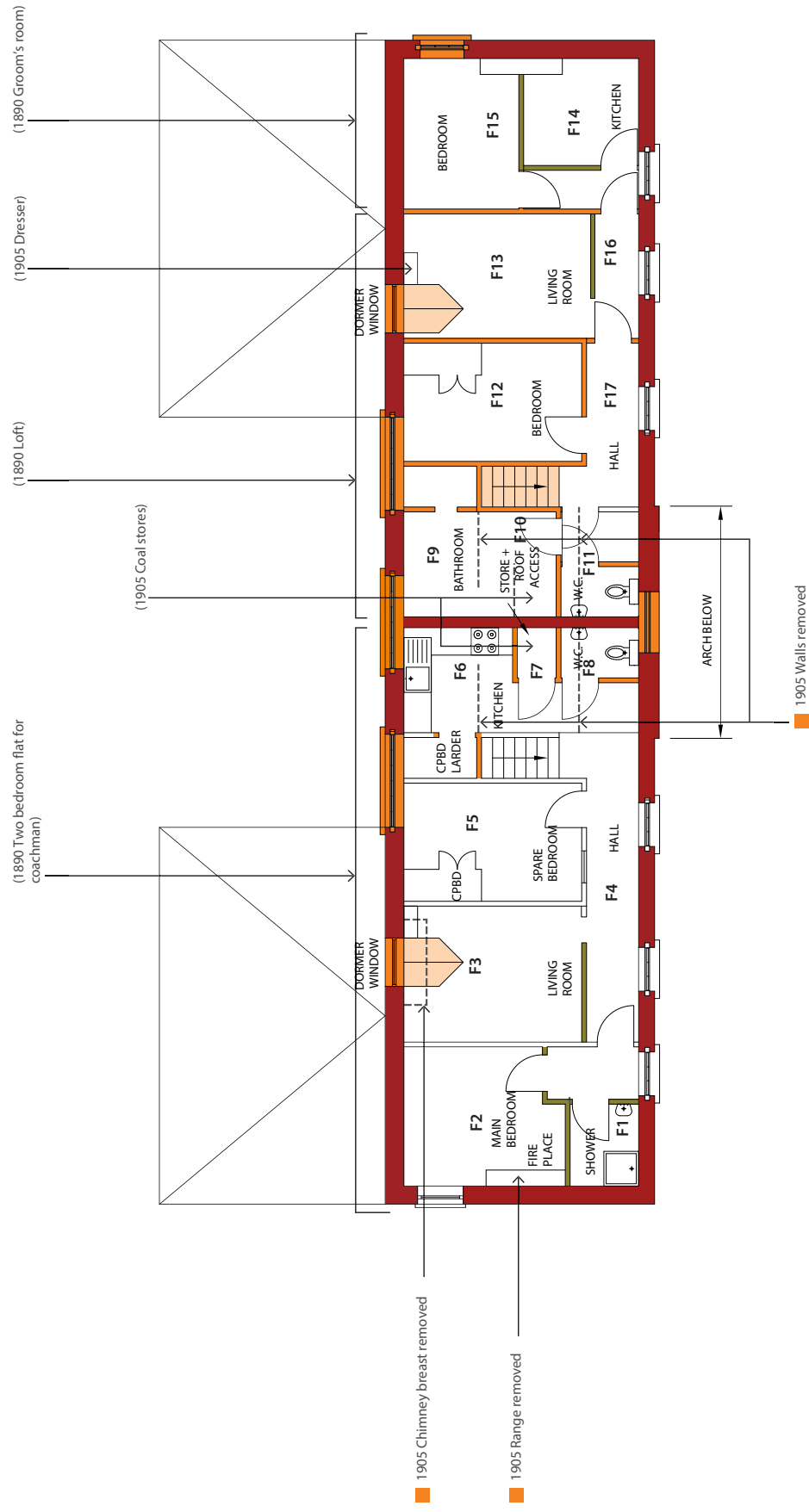




# Marble Hill Stable Block – First Floor Phasing



- 1825-27 Jonathan Peel constructs Stable Block
- 1905 - New office, bothy and tenements
- Post 1952 (first floor only)
- 1964-65 GLC put in cafe
- Post 1964-65 (ground floor only)
- Date unknown





## 2.4 History of the Collections

The original collections were assembled at Marble Hill from 1729, when the structure of the house was completed, until 1767, when Henrietta Howard died and the first inventory of the contents was drawn up. Some of these furnishings came from the royal residences, as George II permitted Henrietta to remove the contents of her apartments when she retired from Court in 1734, while other pieces were specially commissioned for the house.

The furniture and furnishings comprised silk damask and needlework hangings and upholstery; mahogany and walnut furniture; large quantities of 'Chinoiserie' porcelain and lacquer furniture. The paintings included 18<sup>th</sup>-century Italian 'capriccio', copies after Van Dyck and Rubens, royal and family portraits. Henrietta also had a collection of books, as the accounts show payments in 1750-51 to joiners for making mahogany frames with wire fronts. It is not known however where in the house she kept her library, although a list of Howard's books survives (the library is marked on early 20th century plans as being located below the China Room, however there is no known evidence to corroborate this).

Henrietta stipulated in her will that the house and contents should remain together after her death. However, her collection began to be broken up following the death of her great-niece and heir Henrietta Hotham in 1816. With the sale of Marble Hill House in 1824, most of the original contents were dispersed at auction. Photographs of the Great Room from about 1900 show the paintings still in situ but by the time that the property came into public ownership in 1902 only the two pier glasses remained.

A number of pieces from Henrietta Howard's collections were acquired by English Heritage between 1984 and 1991 and returned to their original positions in the Great Room where they remain today. These included all five of the 'Roman Landscapes' painted by Giovanni Paolo Panini in 1738; one of the four marble-topped pier tables carved with peacock motifs made in about 1730; and a Chinese lacquer screen.

Since the house re-opened to the public in 1966, after a major restoration project, a collection of 18<sup>th</sup>-century furniture and paintings, as well as prints and paintings depicting Marble Hill, has been formed. In 1988 the collections were supplemented by the Rosemary and Monty Lazenby Bequest of late 18<sup>th</sup>-century 'Chinoiserie' paintings and furniture displayed on the second floor of the house.



English Heritage

**Fig 83** Table in the style of William Kent, made for the Great Room



English Heritage

**Fig 84** Chinese lacquer screen

## 2.5 The site today

Marble Hill is situated on the north bank of the River Thames (National Grid Reference: NGR TQ 17353 73651), c. 1km upstream from Richmond Bridge and on the opposite bank to Ham House. Richmond town is c. 2km to the north-east, and Twickenham c. 1km to the south-west. The park is separated by iron railings from Warren Path, an asphalted footpath which runs alongside the river to Richmond. Richmond Road and the backs of houses in Cambridge Park provide the boundary to the north and east, Montpelier Road and Orleans Road the boundary to the west.

### 2.5.1 The assets

#### **Marble Hill House**

The house is rectangular in plan, with the main elevations facing north and south. It is stucco faced with stone dressings. It has three main storeys with the lowest treated as an architectural basement. The lead-covered blocking course pyramidal roof has a modillion cornice and is covered with blue-black pantiles and with a lead-covered ball finial at the apex. The north and south fronts are of five-bays with the centre three bays projecting and crowned by pediments. The principal floor is marked by the projecting plain string course and a sill band. On the north front, the projecting centre is enriched with a rusticated ground floor and a pilastered giant Ionic order, tetra-style and with stepped architrave and pulvinated frieze. There is a cartouche in the tympanum of the pediment. Low and curved wing walls flanked the north front and that on the west has once screened the service wing demolished in the early 20<sup>th</sup> century. The south front is more plainly treated with a rusticated arched door at the centre. The house boasts fine interiors including the Great Room (a cube of 24 ft) and a mahogany staircase.

#### **Collection**

Currently there are 435 objects on display in the house comprising ceramics, furniture, paintings (including mirror paintings), prints, sculpture (busts and reliefs), books and light fittings. The majority of the objects on display are part of English Heritage's permanent collections. The items on loan comprise 11 paintings, 15 items of furniture and a set of novels. They are on loan from private collections, the Marble Hill Society, Orleans House Gallery and Victoria and Albert Museum. Notable loans include the mahogany 'Barrington Bed' (c.1740) and the 'Glemham Hall' suite of settees, stools and side chairs (c.1722), on loan from the V&A, and the three 18<sup>th</sup>-century painted views of the local landscape (Richmond Hill) on loan from Orleans House Gallery.

#### **Landscape**

Marble Hill Park is an important historic landscape (grade II\* on the English Heritage Register of Parks and Gardens of Historic Interest) and a popular local park. It forms part of the "Arcadia in the City" as one of a string of important gardens strung along the Thames and is a key part of the famous view from Richmond Hill, which is the only landscape view within England to be protected by an Act of Parliament.

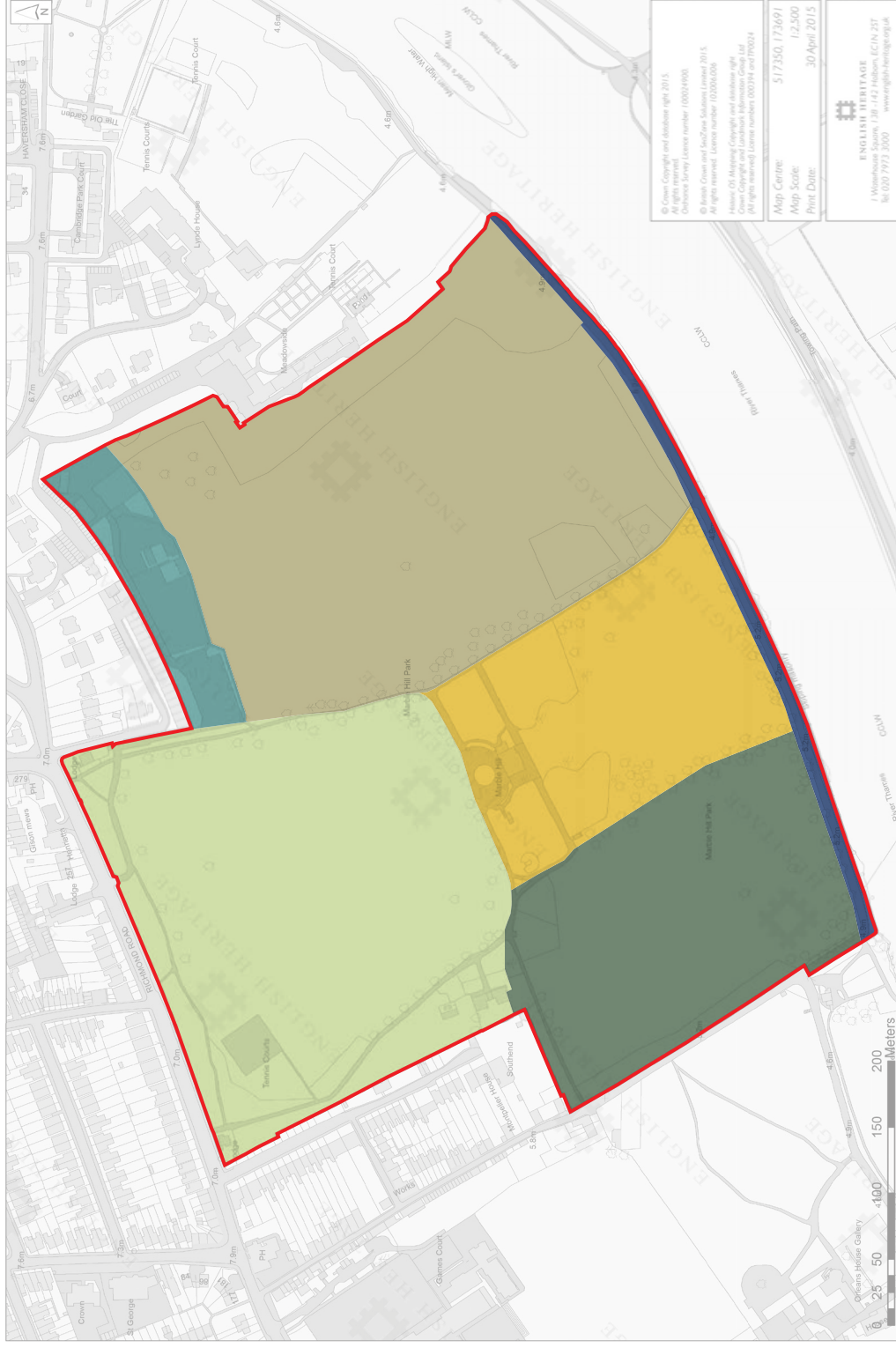
The park can be divided in character areas reflecting their historical evolution, as shown on the plan below. The detailed description of these areas is in the Landscape Conservation Management Plan (see Appendix 2).

# Marble Hill Site

## Character Areas



- █ Guardianship boundary
- █ Pleasure Ground
- █ Great Lawn and Sweet Walk
- █ West Meadow
- █ East Meadow
- █ Car park, playground and works area
- █ River Terrace



## 2.5.2 Designation and Legislative Information

Heritage designations:

- Marble Hill House, Grade I
- White Lodge to Marble Hill Park, Grade II
- Stable Block to Marble Hill, Grade II
- Ice House to west of Marble Hill House Grade II
- Registered Grade II\* on the English Heritage *Register of Parks and Gardens of Special Historic Interest*
- Situated in Twickenham Riverside Conservation Area

The description of each asset is included in the Appendix.

Other designations:

- Marble Hill is included in the Richmond Hill view (protected by Act of Parliament)
- SSSI Impact Risk Zone
- National Character Area - Thames Valley
- Woodpasture and parkland BAP priority habitat (England)

Local designations by London Borough of Richmond upon Thames:

- Metropolitan Open Lands Designation
- Thames Policy Area (including Thames Landscape Strategy)
- Protected vista from Marble Hill House to the Thames Site of Local Importance for Nature Conservation
- Marble Hill House is an Arts Council England Accredited Museum