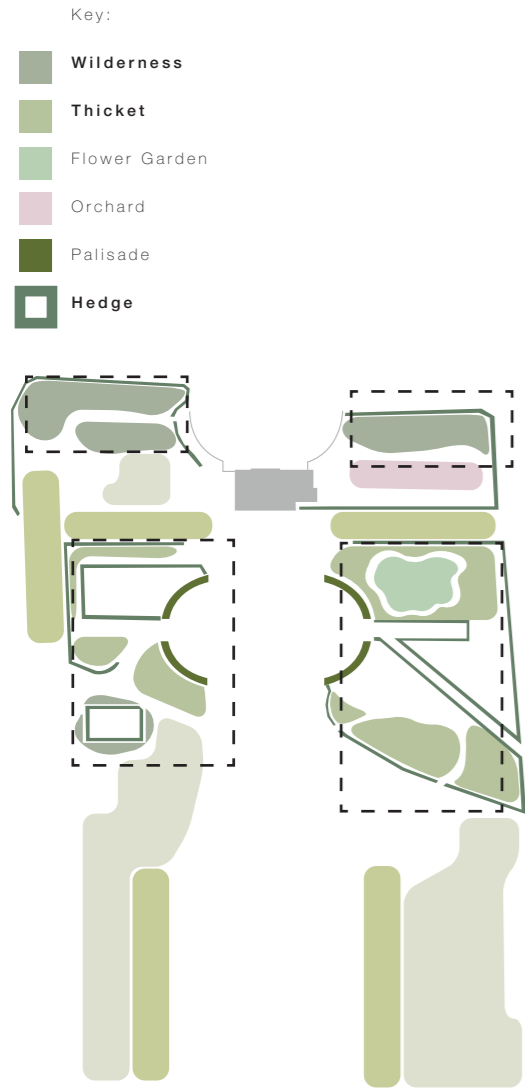


### 3.9 PLEASURE GROUNDS - WILDERNESS, THICKET & HEDGES

One of the primary aims of the proposals for the woodland quarters is to re-introduce a diverse understory layer of shrubs and ground cover. Many of the species which would have been planted contemporary with the c.1749 plan are still relevant today, offering a wide range of fruiting and flowering shrubs to provide foraging habitat for birds and small mammals and a long source of nectar for insects. Early spring bulbs proposed at the gradated woodland edges provide a nectar source for emergent insects. The thickets and wildernesses contain a mix of deciduous and evergreen shrubs, such as *Viburnum tinus* which flowers through the winter to provide a food source for hibernating insects that wake up unseasonably early.



#### SHRUBS



*Buxus sempervirens*  
Box



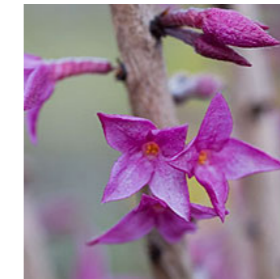
*Calycanthus floridus*  
Carolina allspice



*Crataegus monogyna*  
Hawthorn



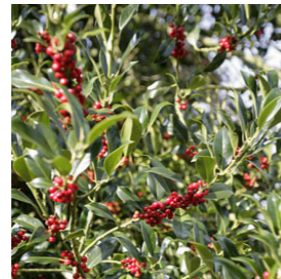
*Cytisus x spachianus*  
Sweet broom



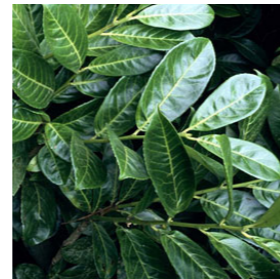
*Daphne mezereum*  
February daphne



*Elaeagnus ebbingei*  
Silverberry



*Ilex aquifolium*  
Common holly



*Prunus laurocerasus*  
Laurel



*Prunus lusitanica*  
Portuguese laurel



*Ruscus aculeatus*  
Butcher's broom



*Taxus baccata*  
Yew  
Evergreen



*Viburnum tinus*  
Laurustinus

#### GROUNDCOVER & PERENNIALS



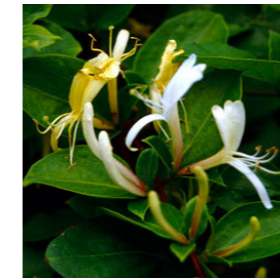
*Dryopteris filix-mas*  
Male fern



*Geranium sanguineum*  
Geranium



*Hedera helix*  
Ivy  
Evergreen



*Lonicera japonica* Halliana  
Honeysuckle



*Lonicera periclymenum*  
Honeysuckle

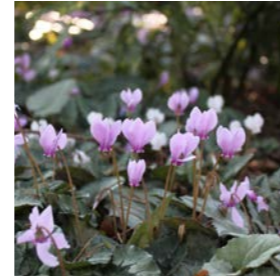


*Primula veris*  
Cowslip

#### BULBS



*Arum italicum*  
Italian Lords and Ladies



*Cyclamen* spp.



*Eranthis hyemalis*  
Winter aconite



*Hyacinthoides non-scripta*  
Bluebells

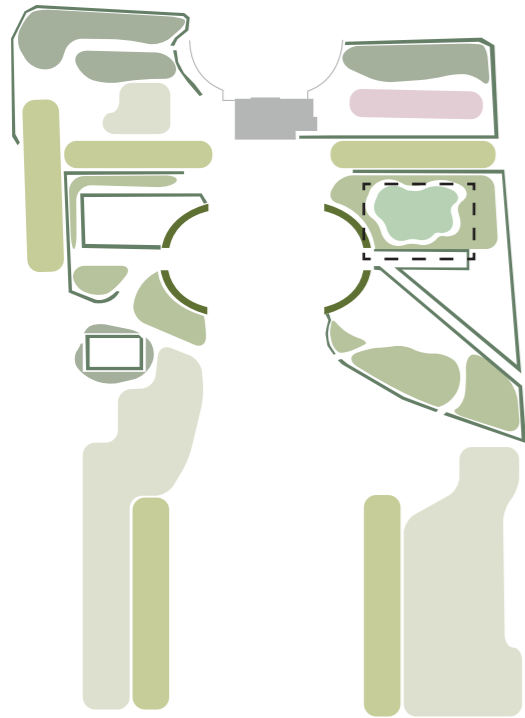


*Narcissus pseudonarcissus*  
Daffodil

### 3.10 PLEASURE GROUNDS - FLOWER GARDEN

The flower garden is an opportunity to create an entirely new habitat typology in Marble Hill Park which references the c.1749 plan and benefits wildlife. The flower garden is intended to be a bright seasonal display of bulbs, herbaceous perennials and annuals with a structure of flowering shrubs. Spring bulbs provide a good early nectar source for emerging insects. Leaving the seed heads on herbaceous perennials well into the autumn will provide a late source of seed for birds. The garden will create an ever changing display for visitors and rich foraging source for wildlife all year round.

- Key:
- Wilderness
  - Thicket
  - Flower Garden**
  - Orchard
  - Palisade
  - Hedge



#### SHRUBS



*Rosa rubiginosa*  
Sweet briar



*Viburnum opulus*  
Guelder rose

#### GROUNDCOVER & PERENNIALS



*Antirrhinum majus*  
Snapdragon



*Dianthus caryophyllus*  
Carnation



*Dictamnus albus*  
Dittany



*Erysimum cheiri*  
Wallflower



*Polemonium caeruleum*  
Jacob's ladder



*Pulmonaria officinalis*  
Lungwort



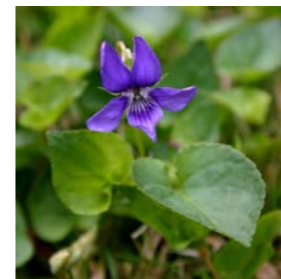
*Saxifraga* spp.  
Saxifrage



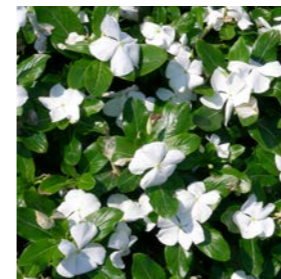
*Silene viscaria*  
Clammy campion



*Valeriana officinalis*  
Valerian



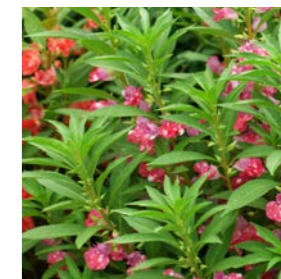
*Viola* spp.  
Violets



*Vinca* spp.



*Centaurea moschata*  
Sultan flower



*Impatiens balsamina*  
Impatiens

#### BULBS



*Asphodelus albus*  
White asphodel



*Crocus vernus*



*Erythronium* spp.



*Muscari armeniacum*  
Grape hyacinth



*Ornithogalum umbellatum*  
The Garden star of Bethlehem



*Tulipa sylvestris*  
Wild tulip