

4.3 PLEASURE GROUNDS PROPOSALS

The Pleasure Grounds represent the most significant opportunity to reinterpret and rediscover the lost landscape design influenced by the ideas of Alexander Pope, with advice from Charles Bridgeman. These proposals seek to reintegrate the design of House and Landscape conserving the integrity of important key elements of the core historic landscape. It will restore and reframe important views and vistas between the house and River Thames.

The overall strategy for this area is to restore the Pleasure Grounds to the layout created by Henrietta Howard between 1724 and 1767. The reintroduction of heritage features will create a diversity of spatial character and habitats within the park which it currently does not offer. The existing timber palisade fencing will be removed to promote access into the Woodland Quarters.

The Pleasure Grounds are subdivided into five areas each with their own special character and landscape features.

1.1 Carriage Circle, Southern Terrace and House Representation

Key considerations and opportunities for this area:

- Restore the formal planting along the curved walls to the north of Marble Hill House according to the historic pattern to enhance the presentation of the house.
- As part of long term tree management strategy remove the Holm Oak encroaching on the house to the north west.

1.2 Avenues

Key considerations and opportunities for this area:

- Restore the avenues to follow quincunx arrangement shown on the c.1749 plan, review species mix to avoid a mono-culture that may be susceptible to biosecurity risks. Plant large species trees.
- Deliver opportunities for managed extensive volunteer tree planting projects.
- Avenues will provide sheltered flight lines for bats, linking the Woodland Quarters with the River Thames.

1.3 The Woodland Quarters

Refer to the following pages for more information

1.4 Planted Palisade and Oval Lawn

Key considerations and opportunities for this area:

- Restore the palisade cut into an arcade on the oval lawn in front of the villa on the c.1749 plan. Accommodate existing tree species of note where appropriate.
- Enhance views and vistas to and from the House and the River Thames.



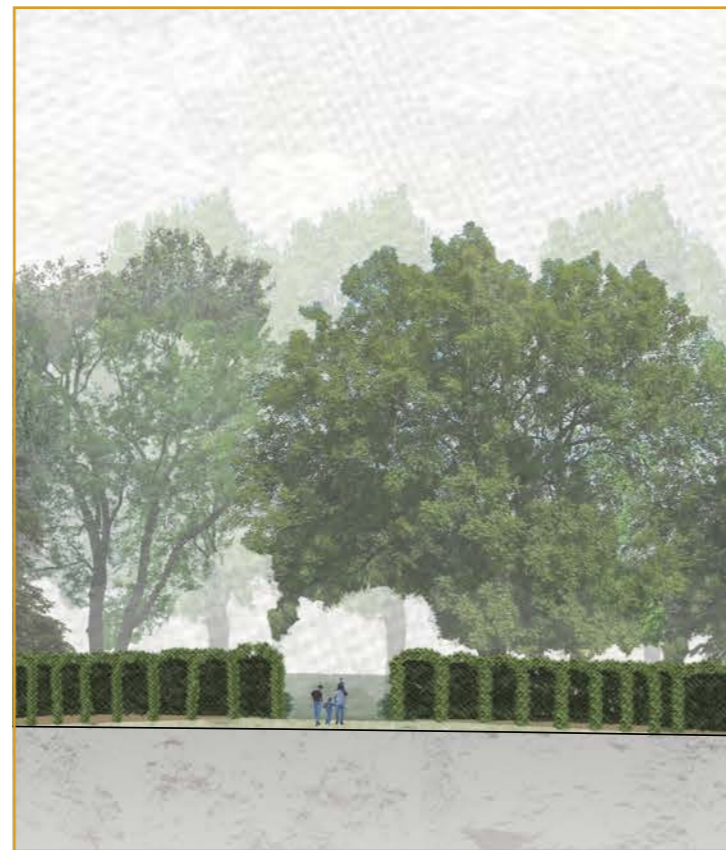
Planometric of the proposed Pleasure Grounds reinterpretation - Ref. 581_PL_L_03_E



Key

- 01 Carriage drive
- 02 Marble Hill House
- 03 Planted palisade
- 04 Woodland Quarters with proposed planting
- 05 Pleasure Grounds
- 06 Oval lawn
- 07 Terraces
- 08 Avenue enhancement
- 09 Riverside walkway
- 10 River Thames

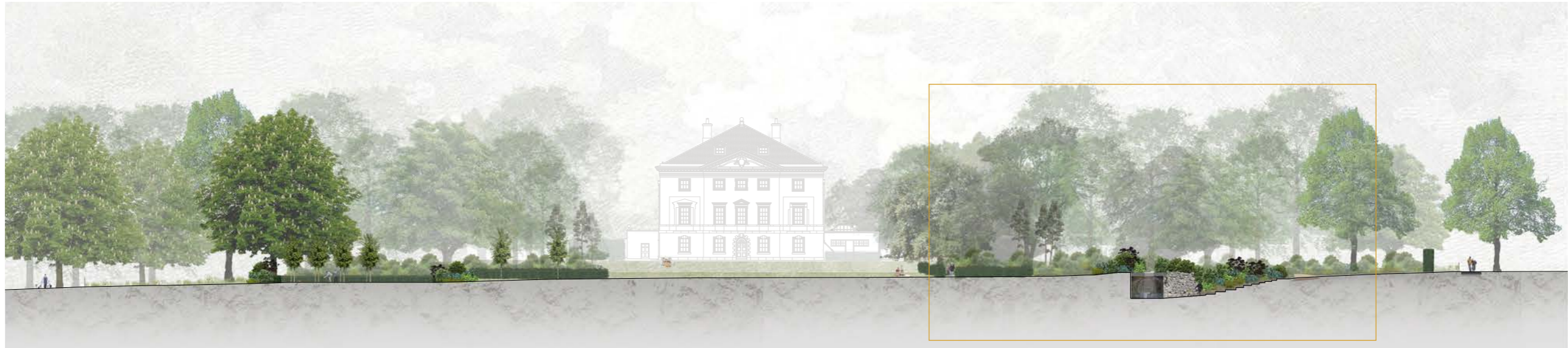
A' - A' North South proposed landscape section through the Pleasure Grounds Ref. 581_PL_L_05_B



Detail of north-south proposed landscape section through the Pleasure Grounds including planted palisade



Detail of north-south proposed landscape section through the Pleasure Grounds



B' - B'

02

03

01

04

05

06

02

Key

- 01 Marble Hill House
- 02 Woodland Quarters with proposed planting
- 03 Pleasure Grounds
- 04 Oval lawn
- 05 Terraces
- 06 Grotto



B' - B' East West proposed landscape section through the Pleasure Grounds Ref. 581_PL_L_06_B

Detail of East West proposed landscape section through the Pleasure Grounds