




KEY:

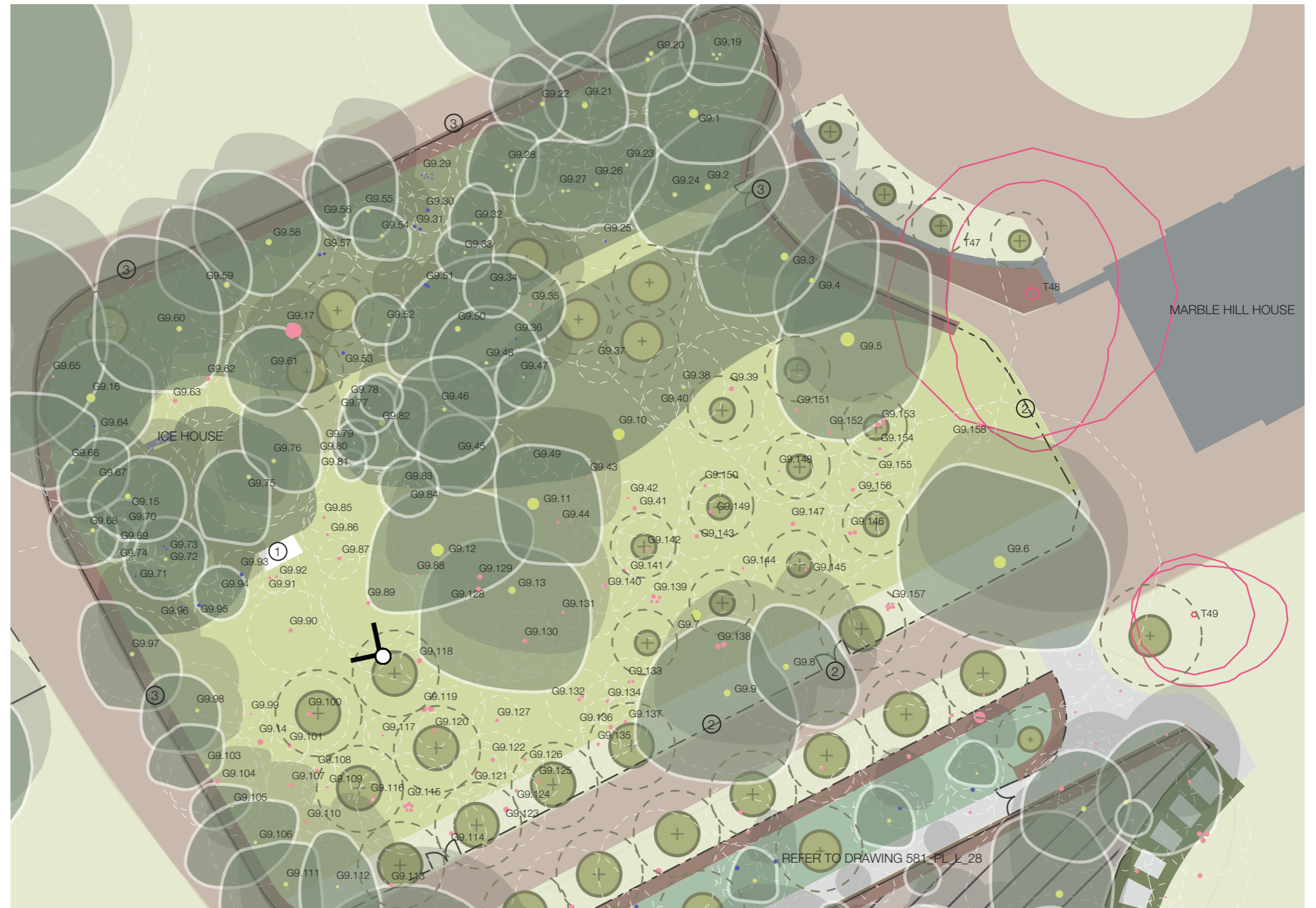
-  Existing retained tree and approximate canopy cover
-  Proposed Specimen Tree Removal
-  Proposed new large-specie tree planting (size shown at time of planting)
-  Tree canopy projection - 10 years post planting
-  Lawn
-  Woodland meadow & bulb mix
-  Thicket - shrub screen planting
-  'Wilderness' - shrub and herbaceous planting
-  Hedges
-  Self-binding gravel paths
-  Existing asphalt surface
-  Area of Woodland Quarters set aside with no works proposed
-  Tree Root Protection Area

TREE WORKS PROPOSALS:

Woodland Quarter Group Works:

-  Retain tree
-  Retain and coppice
-  Remove

1. Ice House Seat
2. Estate railings and gates
3. Post & wire fence set within hedge



North-west Woodland Quarter proposal plan. Ref. 581_PL_L_26_E



Visualisation viewpoint location

