


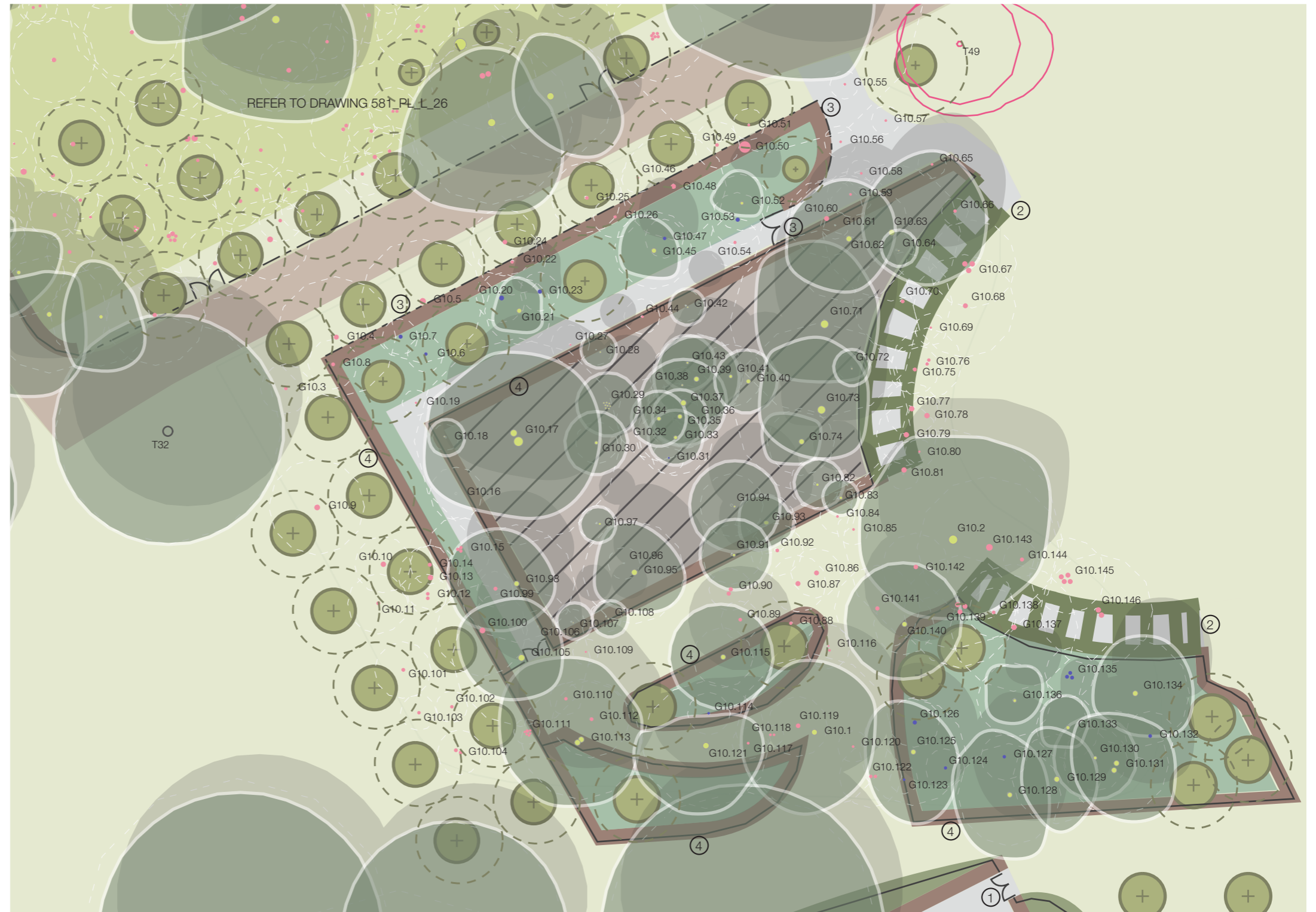


KEY:

-  Existing retained tree and approximate canopy cover
-  Proposed Specimen Tree Removal
-  Proposed new large-specie tree planting (size shown at time of planting)
-  Tree canopy projection - 10 years post planting
-  Lawn
-  Woodland meadow & bulb mix
-  Thicket - shrub screen planting
-  "Wilderness" - shrub and herbaceous planting
-  Hedges
-  Self-binding gravel paths
-  Existing asphalt surface
-  Area of Woodland Quarters set aside with no works proposed
-  Tree Root Protection Area

TREE WORKS PROPOSALS:

- Woodland Quarter Group Works:
-  Retain tree
 -  Retain and coppice
 -  Remove
1. Ninepin alley
 2. Planted palisade
 3. Estate railings and gates
 4. Post & wire fence set within hedge



South-west Woodland Quarter proposal plan. Ref. 581_PL_L_28_E

