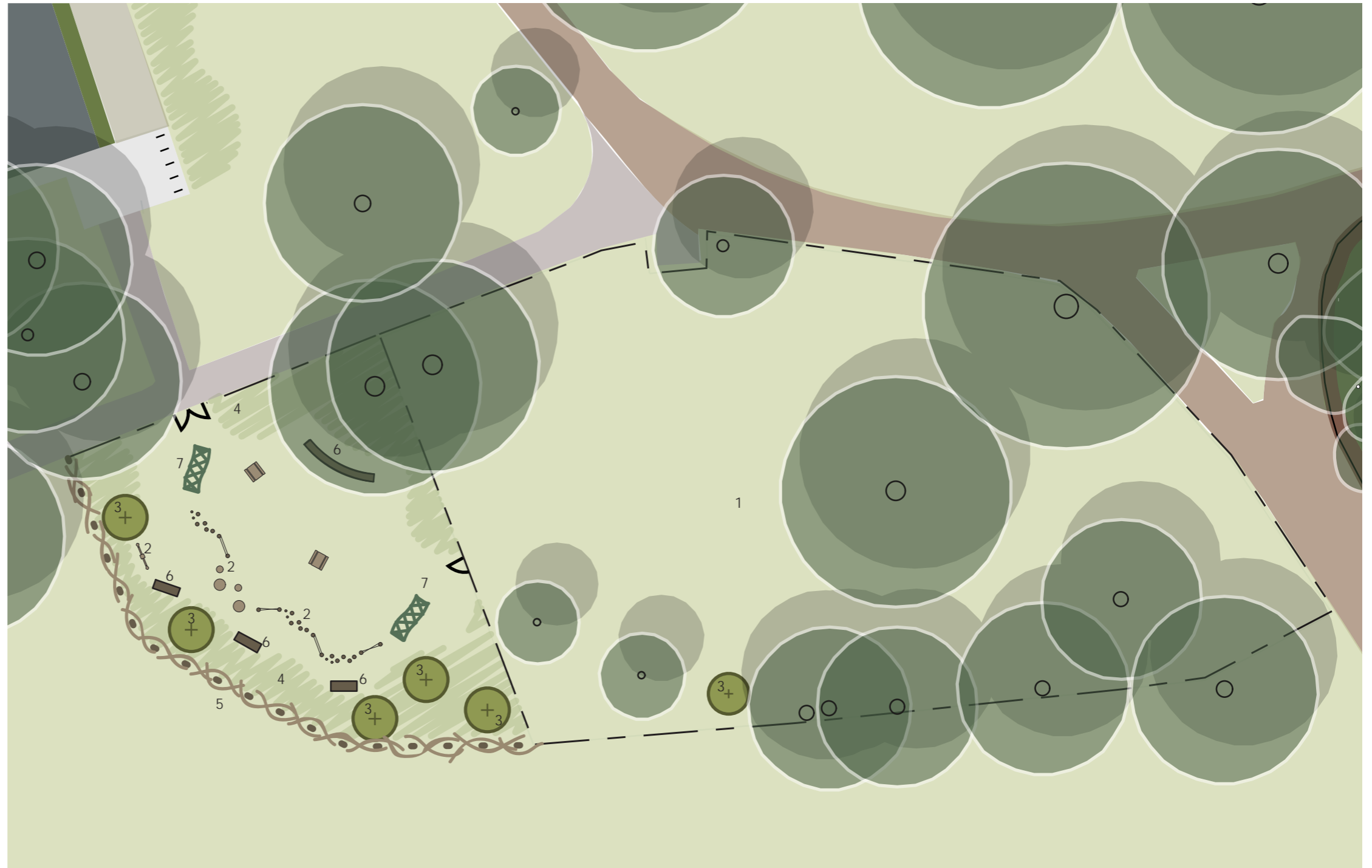


## NEW PLAY AREA

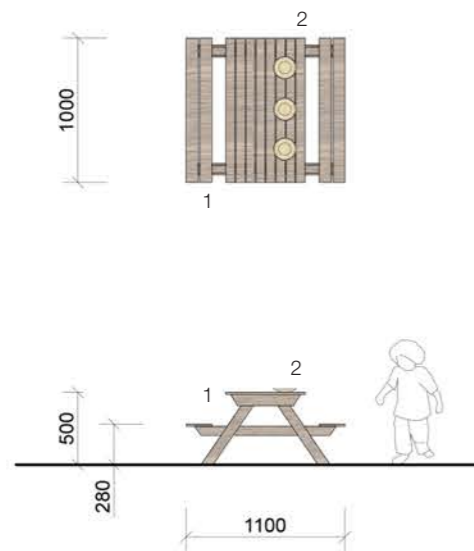
The new play area is proposed as an extension to the existing fenced free-play or dog-free area at Marble Hill Park, opposite the Stables cafe. The existing area will remain unchanged. The new area adjacent will have its own separate gated entry with an additional gate connecting the two areas. A natural 'dead hedge' boundary is proposed around the perimeter of the new play area as a more sympathetic solution to a traditional fence. New play features will be low-lying and natural in style, such as stepping logs, low wobble boards and barefoot paths. New tree planting is proposed to provide shade with a meadow understorey to create enclosure. A long curved timber bench will sit below an existing tree and could be used for outdoor lessons and activities. Additional benches are provided to ensure plenty of places for parents and carers to sit.

1. Existing dog-free area to remain unchanged
2. New low-level play equipment
3. New tree planting
4. Meadow grasses
5. Dead hedge boundary
6. Bench
7. Willow tunnel



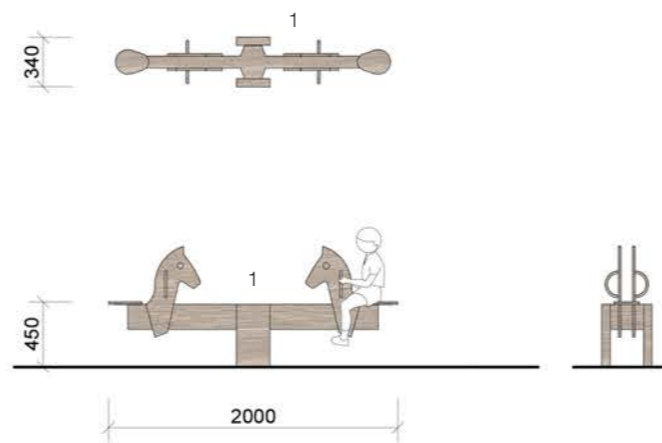
Play area general arrangement





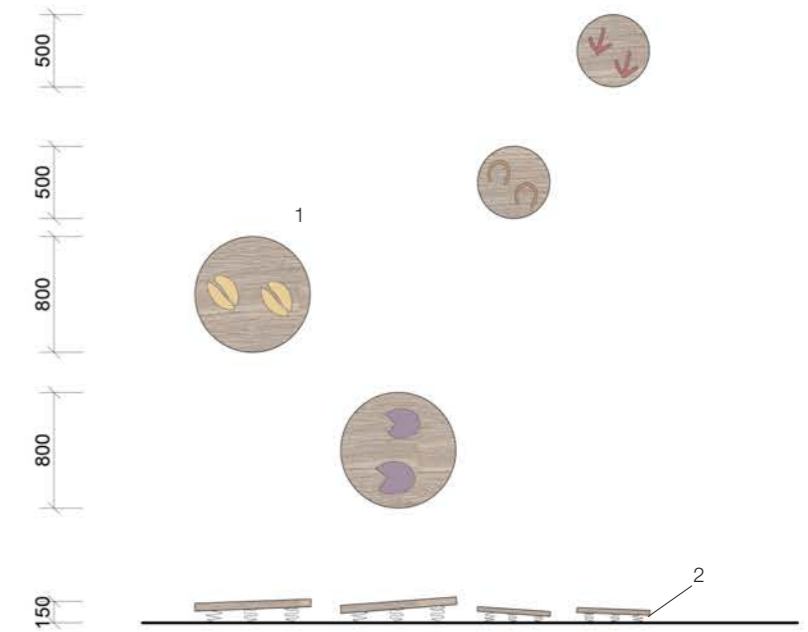
WORKERS REST STOP

- 1. Small child-size picnic table
- 2. Carved timber cups/plates, cooking tools, fixed to table



HORSE SEE-SAW

- 1. Wooden see-saw with carved horse seats



WOBBLE BOARDS

- 1. Low timber wobbling boards with animal footprints carved into the surface
- 2. Springs

## 4.8 INTERACTIVE PLAY INCIDENT PROPOSALS

### Brief

#### Activities and types of play:

Locomotive - balance / agility / weaving  
 Social - role play

#### Features:

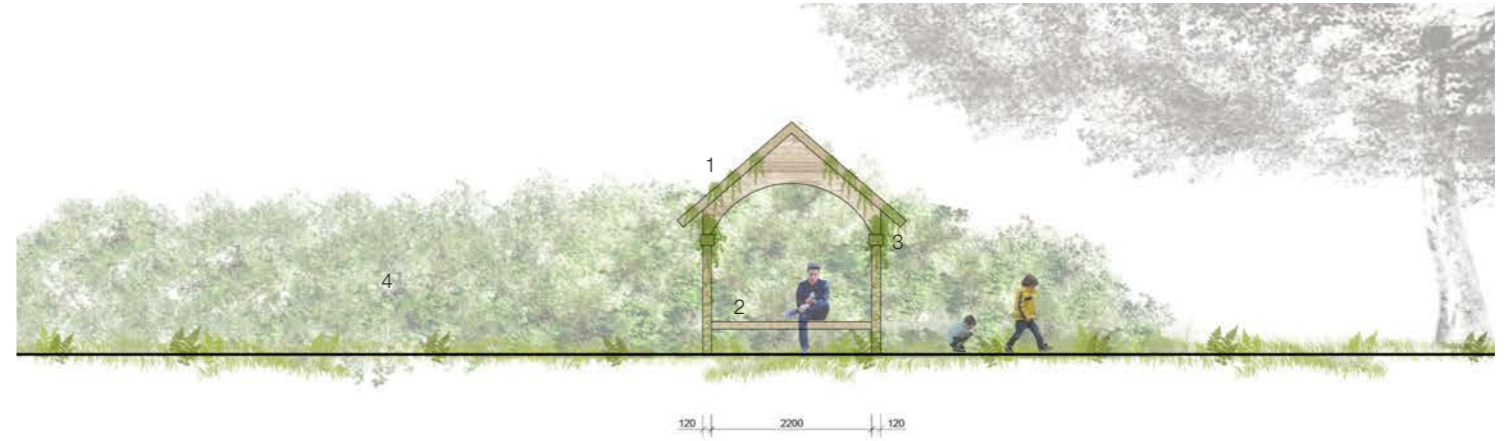
- Ice house seat
- Bee hives
- Grove play

#### Conditions:

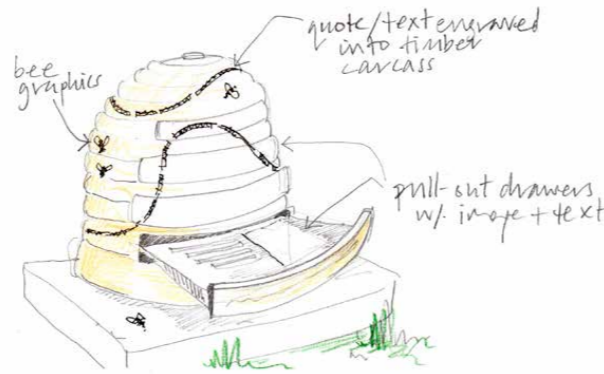
- Inspire curiosity and spark connection to the site
- Suitable for children up to 12 years
- Allow for ground surface to be retained wherever possible



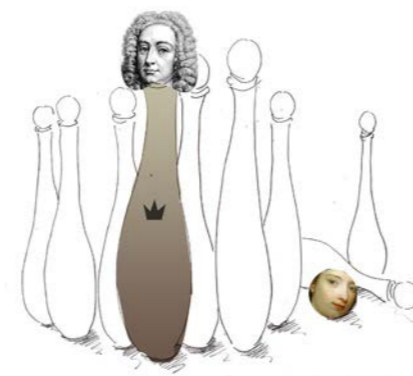
Reference: Wrest Park seat



Ice House Seat: Timber frame structure containing a bench, taking reference from the c.1749 plan. Ref. 581\_PL\_L\_18\_B



Beehives: Two timber beehive sculptures with pull out drawers and carved text. Ref. 581\_PL\_L\_20\_A



Ninepin Alley: The restored Ninepin alley will provide an opportunity for multiple games, such as quoits, skittles and petanque. Carved wooden skittles could provide interpretive elements in the form of characters in Henrietta's life. Ref. 581\_PL\_L\_19\_A