

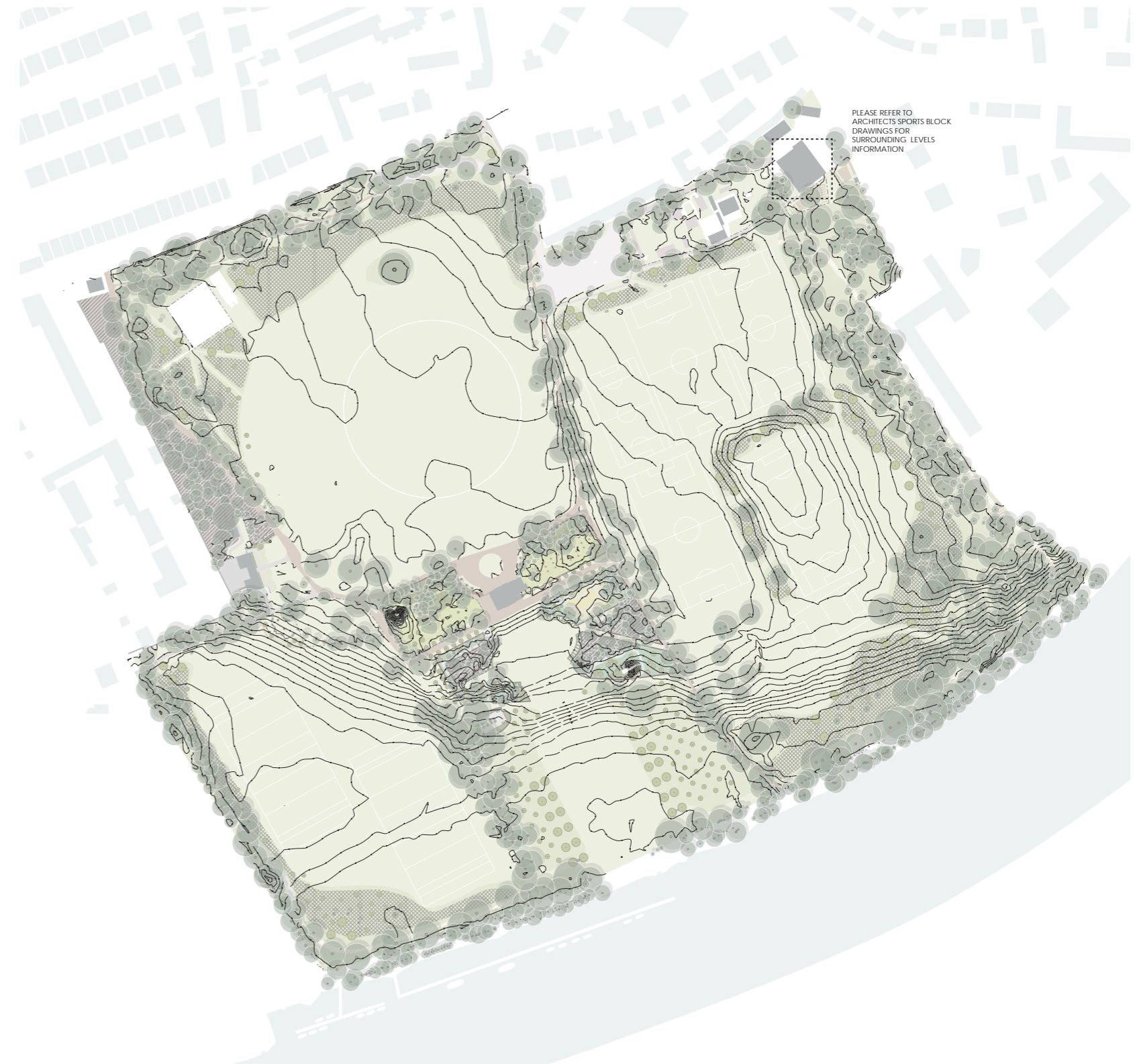
3.3 SITE DRAINAGE & LEVELS

The site wide landscape proposals seek to improve the infiltration of surface water across the park.

The following measures have been used to make these improvements:

- New path networks constructed from permeable paving materials
- New areas of non-permeable hard standing drain into soft landscape
- Pitch surface water infiltration improved by sand slitting (see Chapter 2.9)

Please refer to chapter 2.10 for a summary of the Flood Risk Assessment which concludes the future users of the proposed development will be safe from flooding and there will be no detrimental impact on third parties.



Sitewide Contour Plan - Ref. 581_PL_L_21_F

