

First Floor Plan Shutter Repair Notes

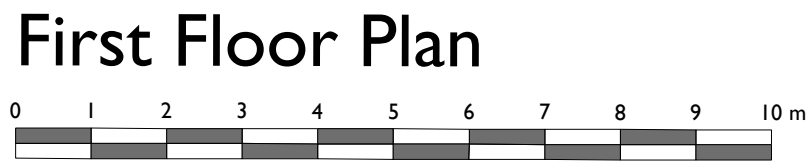
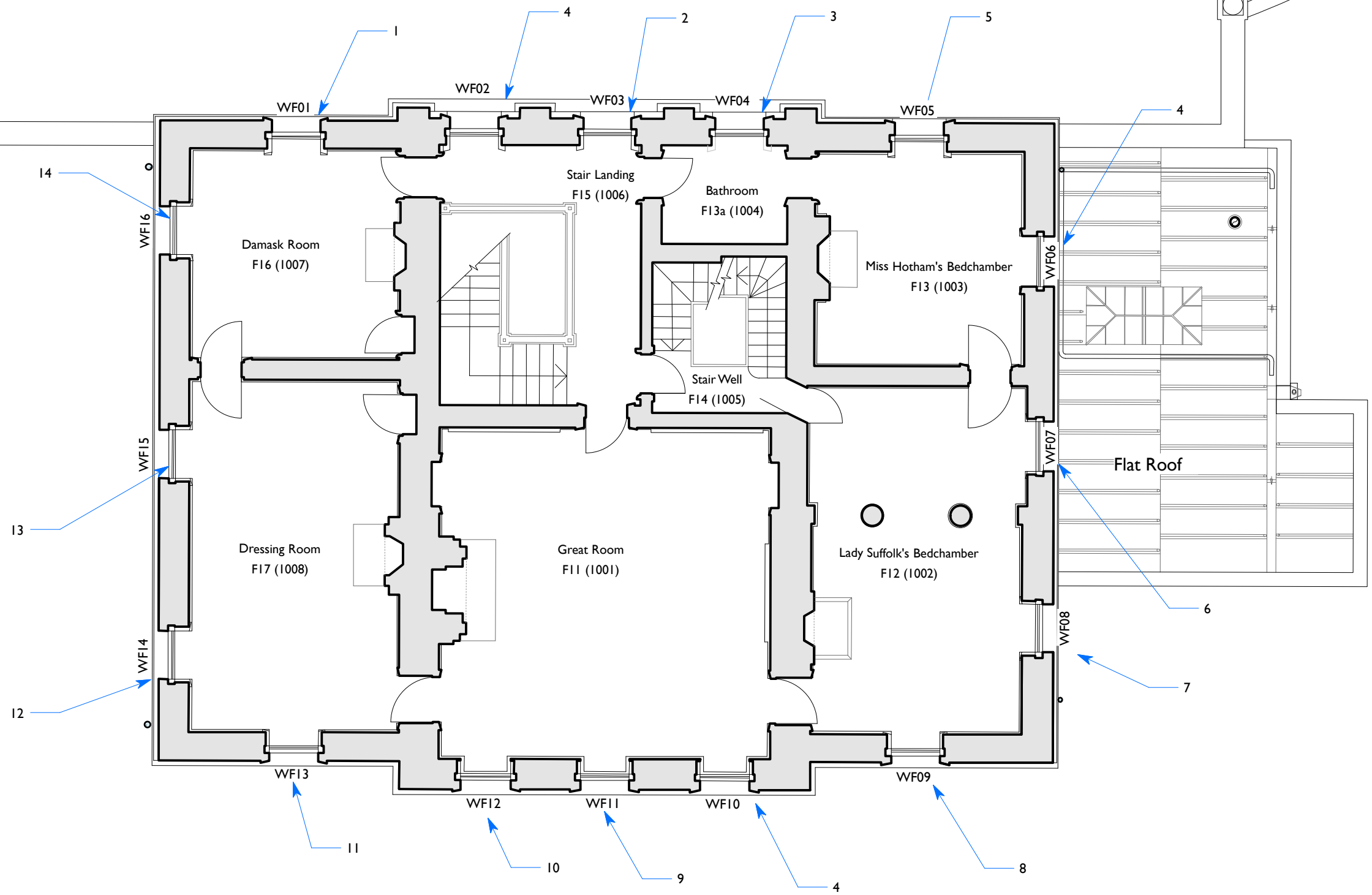
1. WF01 'bar retaining hook' loose, allow to refix with a new fixing, allow to reinforce the timber where it may have been damaged with a new timber insert.
2. WF03 'Bar Catch' spring broken, allow for mechanism to be refurbished replacing the spring.
3. WF04; screws to shutter bar pivot loose, allow to refix and to reinforce the possibly damaged timber with a new timber insert. Refurbish 'plate locking mechanism'
4. Window shutters and ironmongery no repair work proposed.
5. WF05; refurbish 'plate locking mechanism'
6. WF07; refix the LH 'bar plate' screw an additional steel plate to the shutter bar to prevent buckling.
7. WF08; 2no missing Type A 'bar plates'; replace with new. Allow to repair/reinforce the damaged timber lining with a new timber insert; this may require the window to be partially dismantled.

8. WF09; 1no missing Type A 'bar plates' to the LH side; replace with new. Refix the RH 'bar plate'. Allow to repair/reinforce the damaged timber lining with a new timber insert; this may require the window to be partially dismantled.
9. WF11; LH 'Bar Catch' is loose, refix mechanism. Allow to repair/reinforce the damaged timber lining with a new timber insert; this may require the window to be partially dismantled.
10. WF12; LH 'plate locking mechanism' is missing, replace with a new replica item. Allow to repair/reinforce the damaged timber lining with a new timber insert; this may require the window to be partially dismantled.
11. WF13; refix RH loose 'bar plates' using new screws. Allow to repair/reinforce the damaged timber lining with a new timber insert; this may require the window to be partially dismantled.
12. WF14; refurbish LH 'Bar Catch'. Refix the RH inner 'H' hinge to the shutter using new screws. Allow to reinforce the timber of the shutter with a new timber to repair damaged screw holes.
13. WF15; refix the RH hinge to the shutter using new screws. Allow to reinforce the timber of the shutter with a new timber to repair damaged screw holes. The RH inner shutter leaf has split, carry out a joinery repair to remedy.
14. WF16; refix both LH & RH loose 'bar plates' using new screws. Allow to repair/reinforce the damaged timber lining with new timber; this may require the window to be partially dismantled.

DO NOT SCALE THIS DRAWING USE DIMENSIONS ONLY
 VERIFY ALL DIMENSIONS ON SITE BEFORE COMMENCING ANY WORK OR SHOP DRAWINGS

INFORM THE ARCHITECT BEFORE ANY WORK STARTS IF THIS DRAWING EXCEEDS THE QUANTITIES IN ANY WAY

Revision	Date	Notes
A	1 st August 2017	Minor amendments
B	5 th September 2017	Notes amended for planning submission



DRAWING ISSUE STATUS	REVISION N°	DATE	SIGNED
RISK ASSESSMENT UNDERTAKEN			
PLANNING APPLICATION N° 1			
PLANNING APPLICATION N° 2			
PLANNING CONSENT			
LISTED BLDG APPLICATION			
LISTED BLDG CONSENT			
DAC APPROVAL			
BLDG CONTROL APPLICATION			
BLDG CONTROL APPROVAL			
TENDER DOCUMENT			
CONTRACT DOCUMENT			

CLIENT
English Heritage

PROJECT
Marble Hill House

TITLE
Main House:
First Floor Plan; repairs to shutters



Acanthus Clews
architects

SCALE
1:100 @ A3

DATE
April 2017

JOB N°
16_132

DRAWN
HS

DRAWING N°
281 B

Acanthus House
57 Hightown Road
Banbury • Oxfordshire
OX16 9BE
Tel: 01295 702600
Fax: 01295 702601
architects@acanthusclews.co.uk
www.acanthusclews.co.uk