

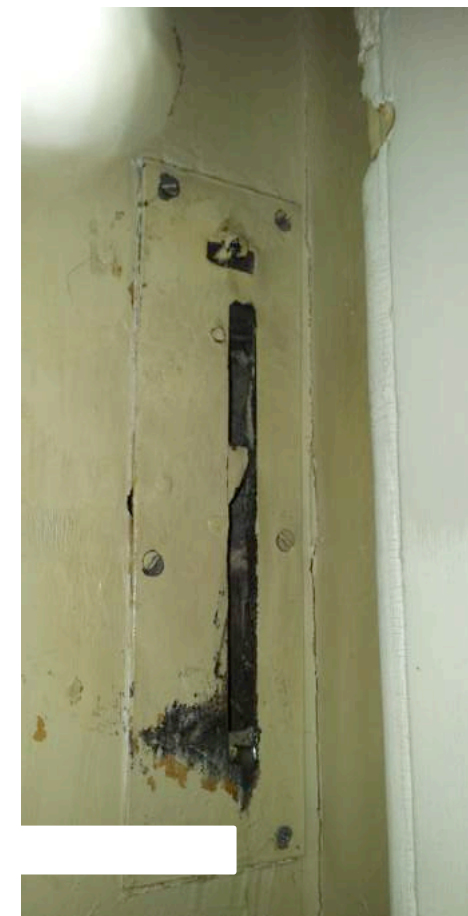


This Drawing is for information and ease of reference.

A typical shutter bar 'pin'. This is approximately 50 mm long, formed from iron rod with the end formed into an eye and hung from a chain. Where the pin is missing, assume to replace the pin chain, the pin and the fixing eye. All these should be bespoke blacksmith made from iron.



A typical shutter 'bar plate'. This is a housing for the shutter bar, see right hand image (where plate is missing). There are of two types: Type A, this is rectangular with an approximate size of 50 x 105 x 3 mm. Type B, this is a more elongated rectangle and is used with a 'plate locking mechanism' size approximately 65 x 250 x 4 mm with a 20 mm wide slot. Both types are formed in iron and should be bespoke blacksmith made from iron.



A 'Bar Catch', this is complicated locking mechanism, many of those that survive are in need of refurbishment, this will require the item's removal and easing by a blacksmith. Where new items are required, these should be bespoke blacksmith made from iron.

DO NOT SCALE THIS DRAWING USE DIMENSIONS ONLY
 VERIFY ALL DIMENSIONS ON SITE BEFORE COMMENCING ANY WORK OR SHOP DRAWINGS
 INFORM THE ARCHITECT BEFORE ANY WORK STARTS IF THIS DRAWING EXCEEDS THE QUANTITIES IN ANY WAY

Revision	Date	Description
A	1st August 2017	Minor amendments
B	5th September 2017	Notes amended for planning submission



When fixing or refixing ironmongery use traditional wood screws to match existing. These should be unplated countersunk traditional pattern slotted woodscrews made from mild steel. Such products are available from www.screwsline.co.uk



A typical 'sliding sash shutter' these are found on the second floor and are formed from two vertically sliding shutters, one going up, the other down. Both are fitted and equipped like a conventional sash window would be with weights, cord and a pulley.



Sash Weights; where required assume all new sash weights should be round lead weights from 'The Leadweight Company.' Weight diameters from 25 - 50 mm are available, size to suit sash lining. The weights should be fitted with eyelet fixings.

Sash Pulleys; where new are required are to match existing in size, material and style. A range of sizes and types are available from www.traditionalironmongerycompany.co.uk.

DRAWING ISSUE STATUS	REVISION N°	DATE	SIGNED
RISK ASSESSMENT UNDERTAKEN			
PLANNING APPLICATION N° 1			
PLANNING APPLICATION N° 2			
PLANNING CONSENT			
LISTED BLDG APPLICATION			
LISTED BLDG CONSENT			
DAC APPROVAL			
BLDG CONTROL APPLICATION			
BLDG CONTROL APPROVAL			
TENDER DOCUMENT			
CONTRACT DOCUMENT			

CLIENT English Heritage	
PROJECT Marble Hill House	
TITLE Main House: Shutter Ironmongery Types & Terminology	Acanthus Clews architects
SCALE Not to Scale @ A3	Acanthus House 57 Hightown Road Banbury • Oxfordshire OX16 9BE
DATE April 2017	Drawn HS
JOB N° 16_132	DRAWING N° 283 B
	Tel: 01295 702600 Fax: 01295 702601 architects@acanthusclews.co.uk www.acanthusclews.co.uk