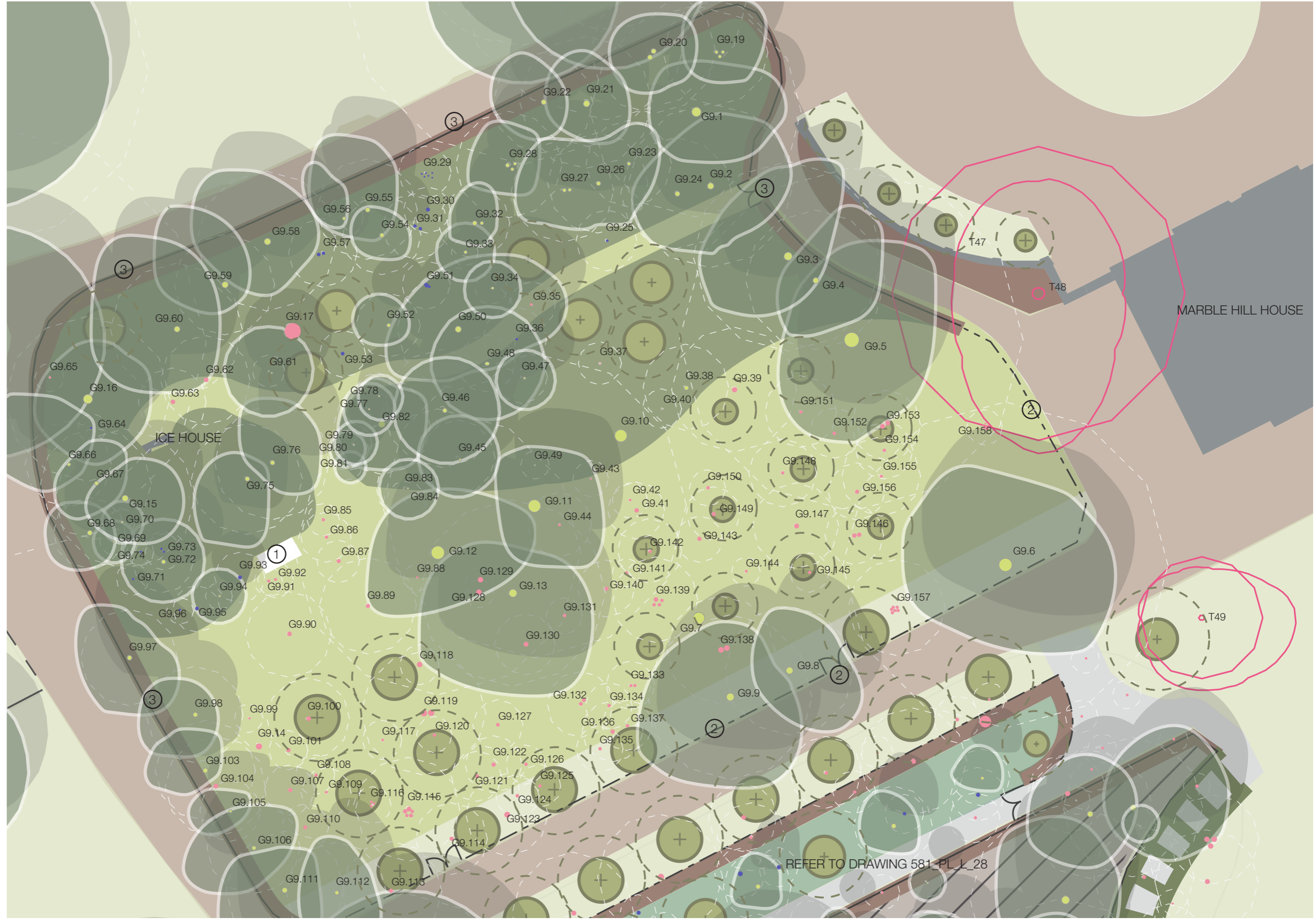


KEY:

- Existing retained tree and approximate canopy cover
- Proposed Specimen Tree Removal
- Proposed new large-specie tree planting (size shown at time of planting)
- Tree canopy projection - 10 years post planting
- Lawn
- Woodland meadow & bulb mix
- Thicket - shrub screen planting
- 'Wilderness' - shrub and herbaceous planting
- Hedges
- Self-binding gravel paths
- Existing asphalt surface
- Area of Woodland Quarters set aside with no works proposed
- Tree Root Protection Area



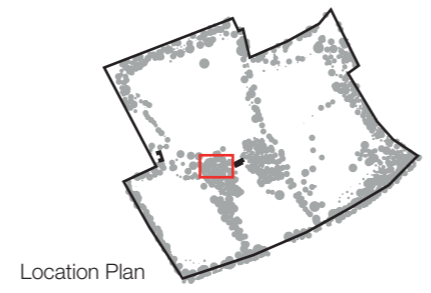
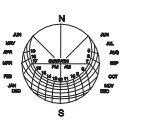
TREE WORKS PROPOSALS:

Woodland Quarter Group Works:

- Retain tree
- Retain and coppice
- Remove

- Ice House Seat
- Estate railings and gates
- Post & wire fence set within hedge

REFER TO DRAWING 581_PL_L_28



Rev	Date	Initials	Description
E	09.08.18	VB	Update
D	21.07.17	VB	Update
C	26.07.17	VB	Update
B	12.07.17	VB	Update
A	18.05.17	VB	Update
-	10.05.17	VB	Update

J & L GIBBONS
 LANDSCAPE ARCHITECTURE
 URBAN DESIGN
 19 SWAN YARD,
 LONDON N1 1SD
 T: 020 7226 1345

Project: MARBLE HILL REVIVED		
Date: 09_05_17	Scale: 1:250 @ A3	Status: Planning
Drawn: VB	Checked: ND	Approved: ND

Drawing title:
PROPOSED LANDSCAPE PLAN
NW WOODLAND QUARTER

Drawing number: 581_PL_L_26 E