

# soiltechnics

environmental and geotechnical consultants

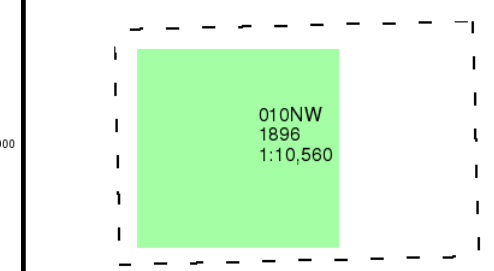
London

Published 1896

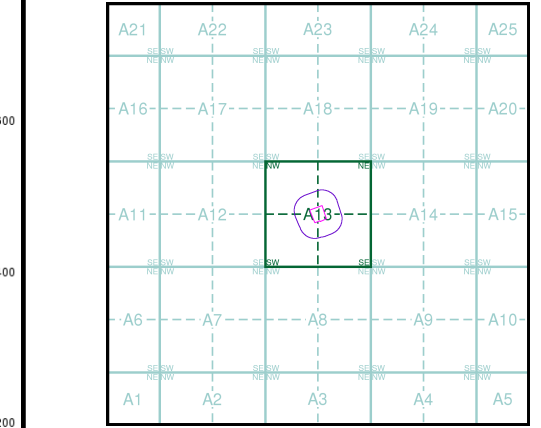
Source map scale - 1:10,560

The historical maps shown were reproduced from maps predominantly held at the scale adopted for England, Wales and Scotland in the 1840's. In 1854 the 1:2,500 scale was adopted for mapping urban areas; these maps were used to update the 1:10,560 maps. The published date given therefore is often some years later than the surveyed date. Before 1938, all OS maps were based on the Cassini Projection, with independent surveys of a single county or group of counties, giving rise to significant inaccuracies in outlying areas. In the late 1940's, a Provisional Edition was produced, which updated the 1:10,560 mapping from a number of sources. The maps appear unfinished - with all military camps and other strategic sites removed. These maps were initially overprinted with the National Grid. In 1970, the first 1:10,000 maps were produced using the Transverse Mercator Projection. The revision process continued until recently, with new editions appearing every 10 years or so for urban areas.

## Map Name(s) and Date(s)



## Historical Map - Slice A



## Order Details

Order Number: 157075076\_1\_1  
Customer Ref: STQ4343  
National Grid Reference: 519780, 176920  
Slice: A  
Site Area (Ha): 0.73  
Search Buffer (m): 1000

## Site Details

Mellis Avenue

**Landmark**  
INFORMATION GROUP

Tel: 0844 844 9952  
Fax: 0844 844 9951  
Web: [www.envirocheck.co.uk](http://www.envirocheck.co.uk)





© Crown copyright and Landmark Information Group Limited 2018. All Rights Reserved.

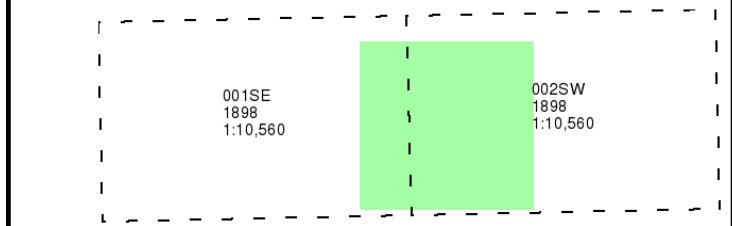
# soiltechnics

environmental and geotechnical consultants

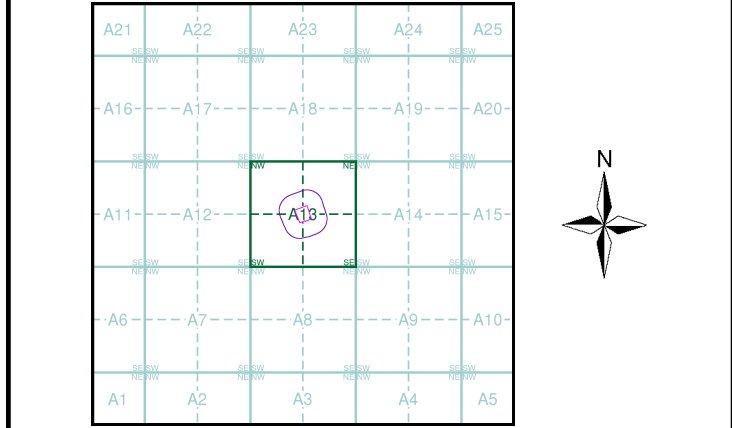
**Surrey**  
**Published 1898**  
**Source map scale - 1:10,560**

The historical maps shown were reproduced from maps predominantly held at the scale adopted for England, Wales and Scotland in the 1840's. In 1854 the 1:2,500 scale was adopted for mapping urban areas; these maps were used to update the 1:10,560 maps. The published date given therefore is often some years later than the surveyed date. Before 1938, all OS maps were based on the Cassini Projection, with independent surveys of a single county or group of counties, giving rise to significant inaccuracies in outlying areas. In the late 1940's, a Provisional Edition was produced, which updated the 1:10,560 mapping from a number of sources. The maps appear unfinished - with all military camps and other strategic sites removed. These maps were initially overprinted with the National Grid. In 1970, the first 1:10,000 maps were produced using the Transverse Mercator Projection. The revision process continued until recently, with new editions appearing every 10 years or so for urban areas.

## Map Name(s) and Date(s)



## Historical Map - Slice A



**Order Details**  
Order Number: 157075076\_1\_1  
Customer Ref: STQ4343  
National Grid Reference: 519780, 176920  
Slice: A  
Site Area (Ha): 0.73  
Search Buffer (m): 1000

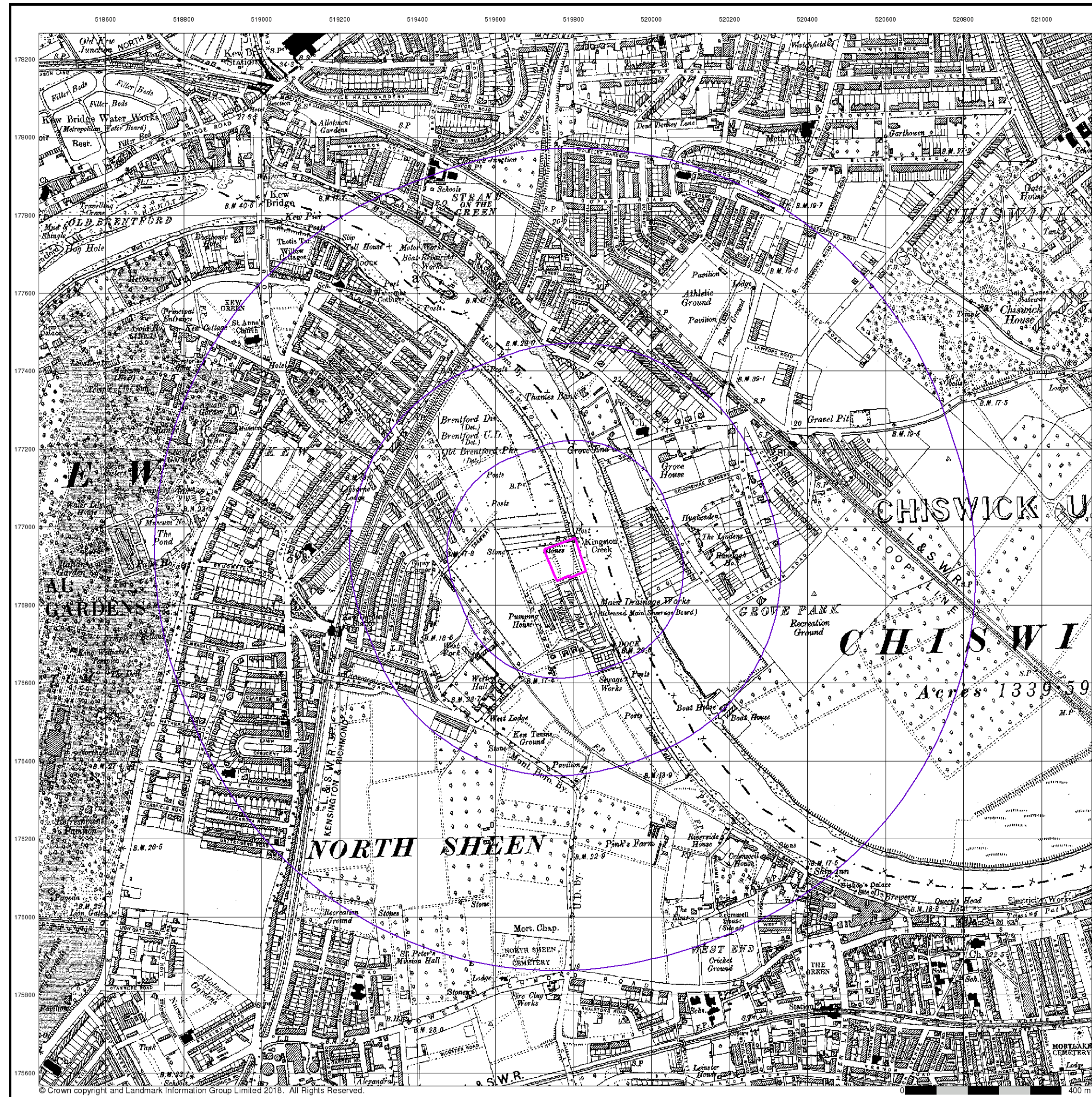
**Site Details**  
Mellis Avenue

**Landmark**  
INFORMATION GROUP  
Tel: 0844 844 9952  
Fax: 0844 844 9951  
Web: www.envirocheck.co.uk









© Crown copyright and Landmark Information Group Limited 2018. All Rights Reserved.

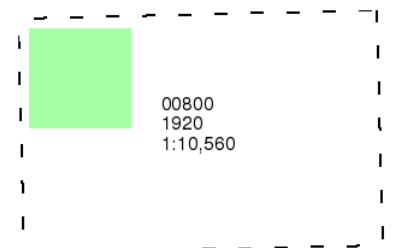
# soiltechnics

environmental and geotechnical consultants

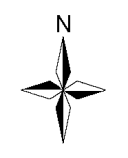
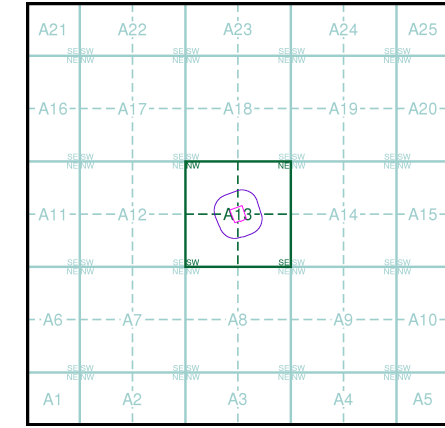
**London**  
**Published 1920**  
**Source map scale - 1:10,560**

The historical maps shown were reproduced from maps predominantly held at the scale adopted for England, Wales and Scotland in the 1840's. In 1854 the 1:2,500 scale was adopted for mapping urban areas; these maps were used to update the 1:10,560 maps. The published date given therefore is often some years later than the surveyed date. Before 1938, all OS maps were based on the Cassini Projection, with independent surveys of a single county or group of counties, giving rise to significant inaccuracies in outlying areas. In the late 1940's, a Provisional Edition was produced, which updated the 1:10,560 mapping from a number of sources. The maps appear unfinished - with all military camps and other strategic sites removed. These maps were initially overprinted with the National Grid. In 1970, the first 1:10,000 maps were produced using the Transverse Mercator Projection. The revision process continued until recently, with new editions appearing every 10 years or so for urban areas.

## Map Name(s) and Date(s)



## Historical Map - Slice A



**Order Details**  
Order Number: 157075076\_1\_1  
Customer Ref: STQ4343  
National Grid Reference: 519780, 176920  
Slice: A  
Site Area (Ha): 0.73  
Search Buffer (m): 1000

**Site Details**  
Mellis Avenue

**Landmark**  
INFORMATION GROUP  
Tel: 0844 844 9952  
Fax: 0844 844 9951  
Web: www.envirocheck.co.uk