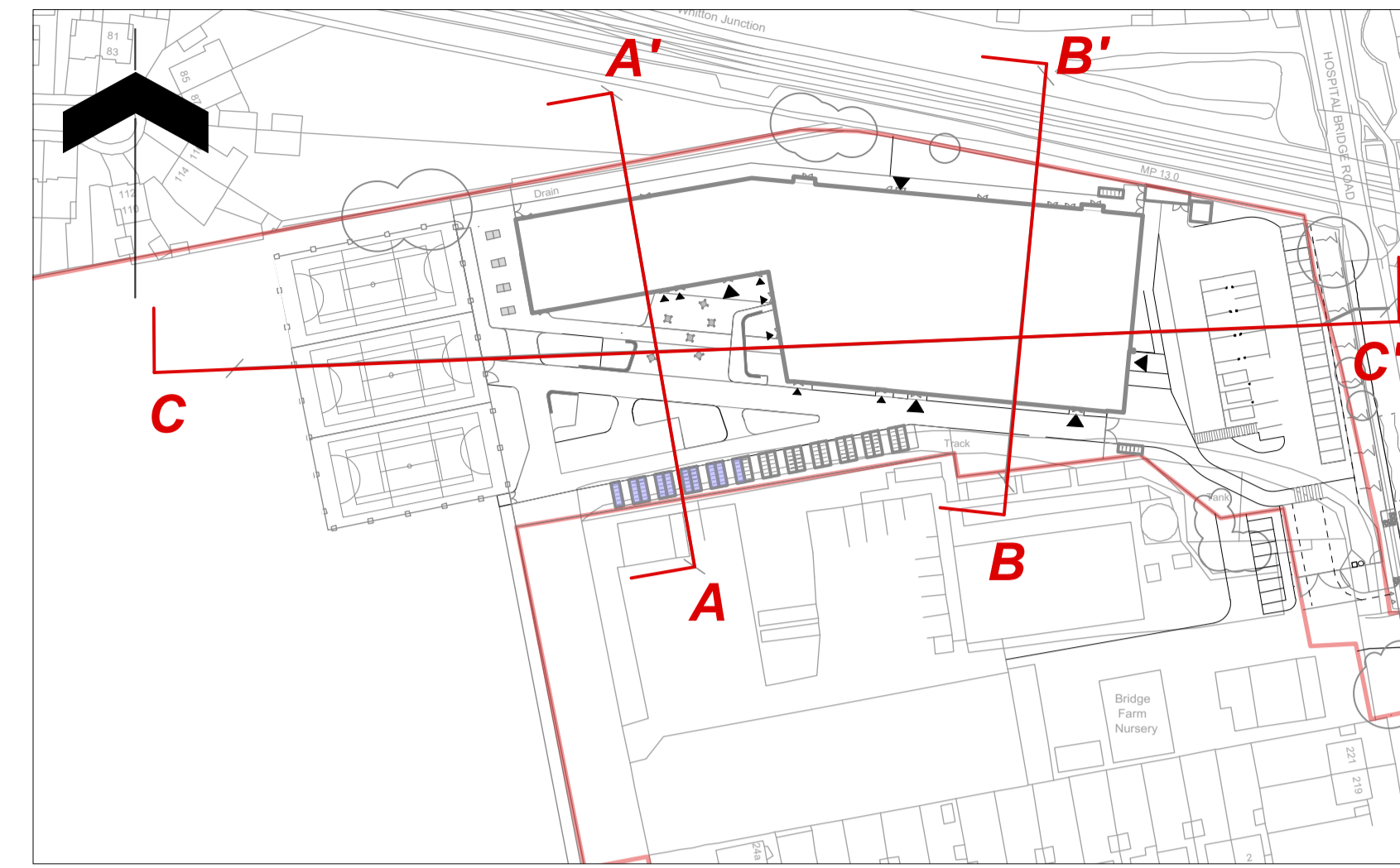
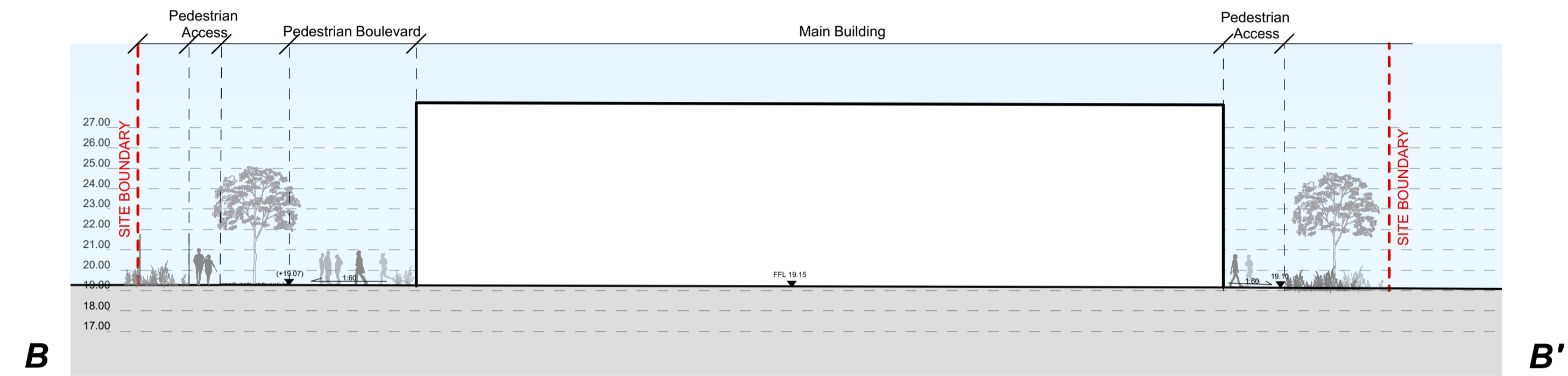


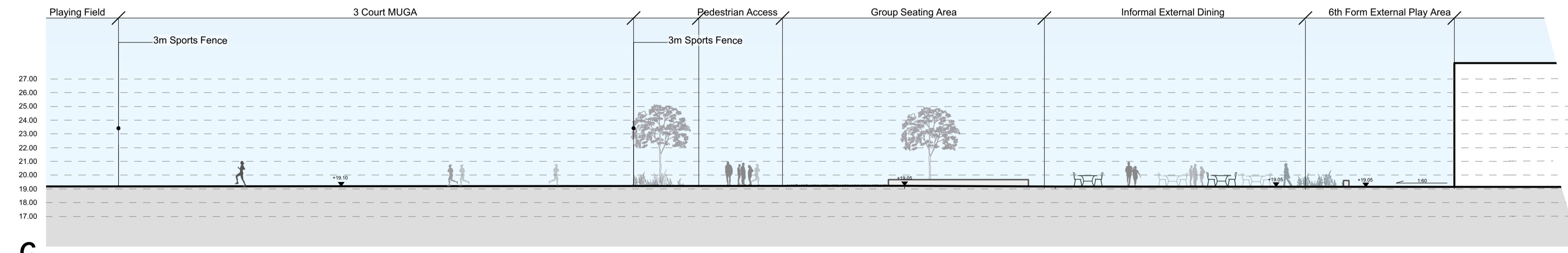
A **A'**



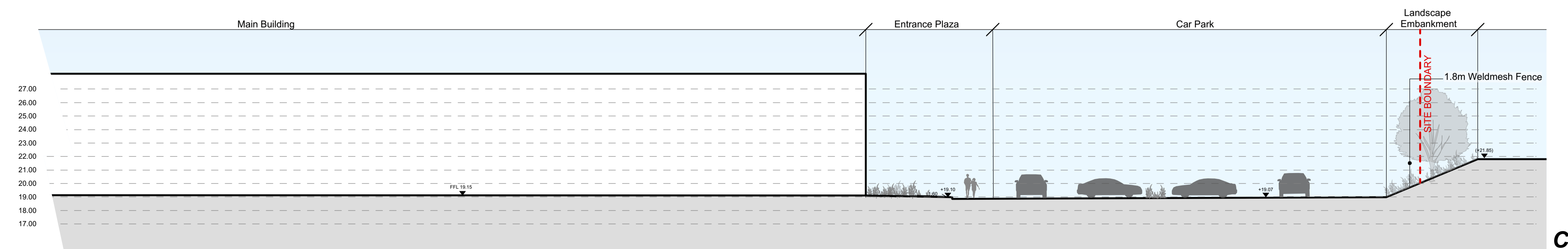
Site Location Plan



B **B'**



C **C'**



C'

Notes
 1. Drawing not to be scaled for construction or setting out purposes.
 2. To be read in conjunction with Project Risk Register REF: XXX
 3. To be read in conjunction with all other Landscape Architect's drawings

KEY

--	--	--

ID	RISK	MITIGATION	Date Mitigated
RESIDUAL PROJECT RISKS			

DATE	SUITABILITY	REV	DESCRIPTION OF REVISION	DRAWN BY	APPROVED BY
REVISIONS					

SUITABILITY
S2 - For Planning

ares
 LANDSCAPE ARCHITECTS
 Ares Landscape Architects LTD
 Gilecrashers
 51 Eyre Lane
 Sheffield
 S1 4RB
 t: 0114 276 2000
 e: hello@ares.eu.com
 w: ares.eu.com

CLIENT:
Bowmer and Kirkland

PROJECT TITLE:
Turing House School

DRAWING TITLE:
Site Sections

DRAWING SCALE: 1:200
 DRAWN BY: EC
 DRAWN DATE: 12.04.2018
 PAPER SIZE: A1
 APPROVED BY: LA

DRAWING NUMBER: EFATH-ALA-00-XX-DR-L-0008
 SUITABILITY: S2
 REVISION: P01