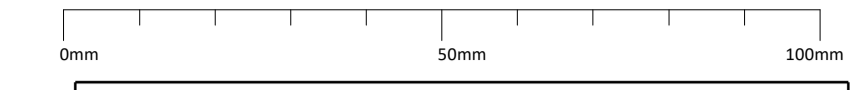


Responsibility is not accepted for errors made by others in scaling from this drawing.
All construction information should be taken from figured dimensions only.

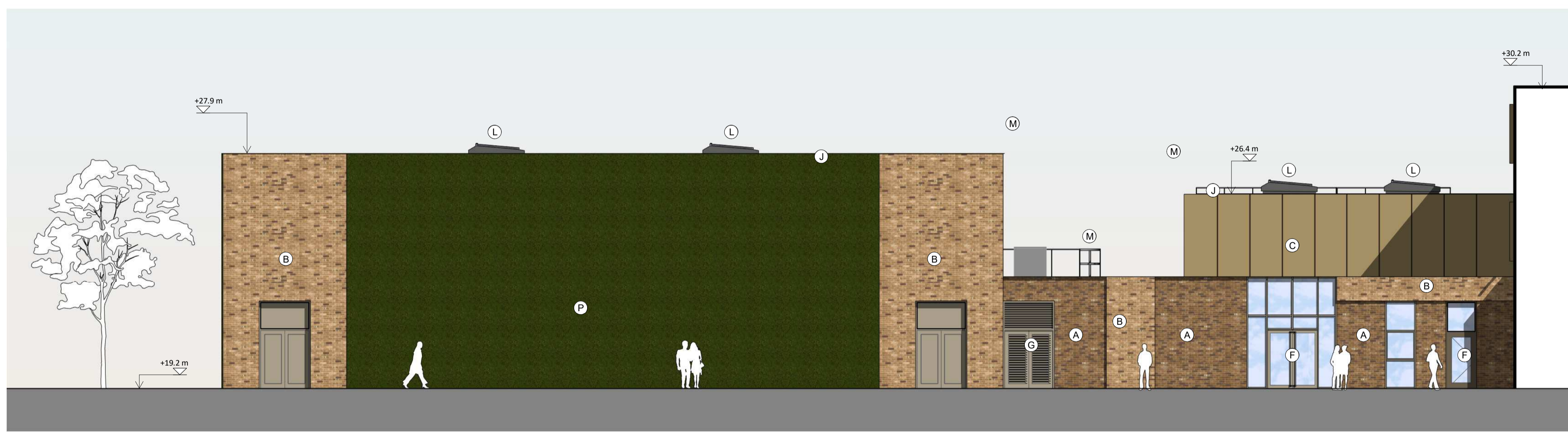


ELEVATIONS KEY

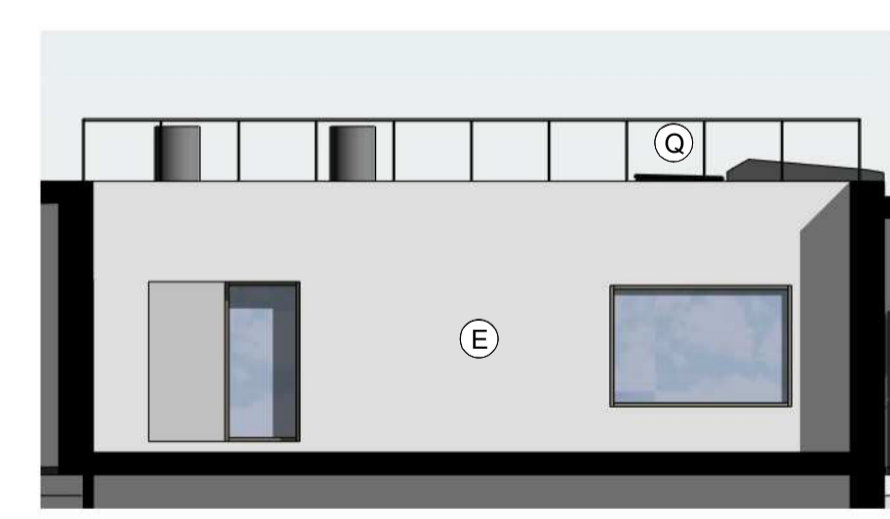
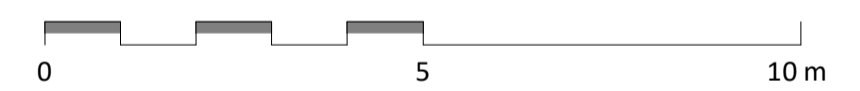
- (A) Marine Blend Dark - Recessed stretcher bond brickwork
Danehill Yellow - 50%
Lindfield Yellow Multi - 30%
Selected Dark - 20%
- (B) Marine Blend - Stretcher bond brickwork (light)
Danehill Yellow - 85%
Lindfield Yellow Multi - 10%
Selected Dark - 5%
Note: Special angle bricks required to southwest and northwest corners of main teaching block
- (C) Light coloured Composite Panel metal Cladding:
- (D) Dark coloured Composite Panel
- (E) Light beige through colour render
- (F) Aluminium dark grey framed and fully glazed door.
- (G) Aluminium dark grey louvre door with louvre over panel to plantroom.
- (H) Dark grey aluminium curtain walling with opening windows
- (J) Mid brown ppc aluminium light gauge metal roof edge trim drip detail - RAL to match cladding
- (L) Glazed rooflights
- (M) Galvanised Access Ladder
- (N) PPC aluminium stencil cut signage
Bespoke school logo and text
Colour and finish to match cladding backing
- (O) Projecting Window surround
- (P) Strained wire trellis fixed to brickwork backing 'B'
- (Q) Photovoltaic Panels



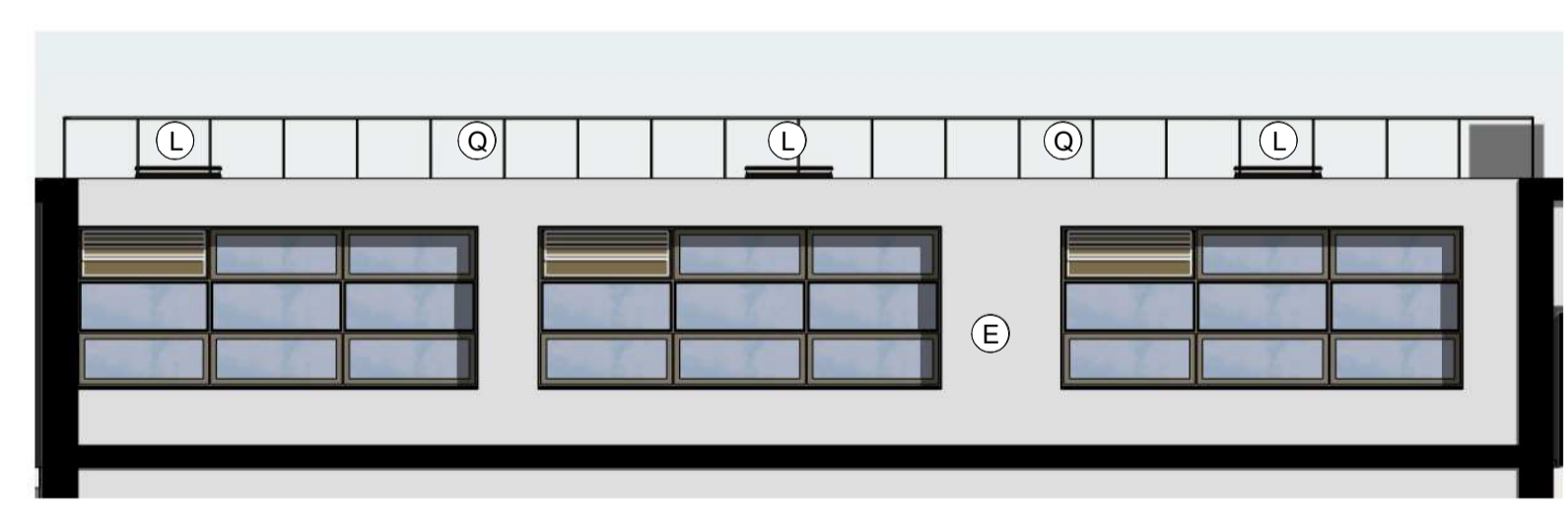
1 North West Elevation - Rear of Sports Block
1:100



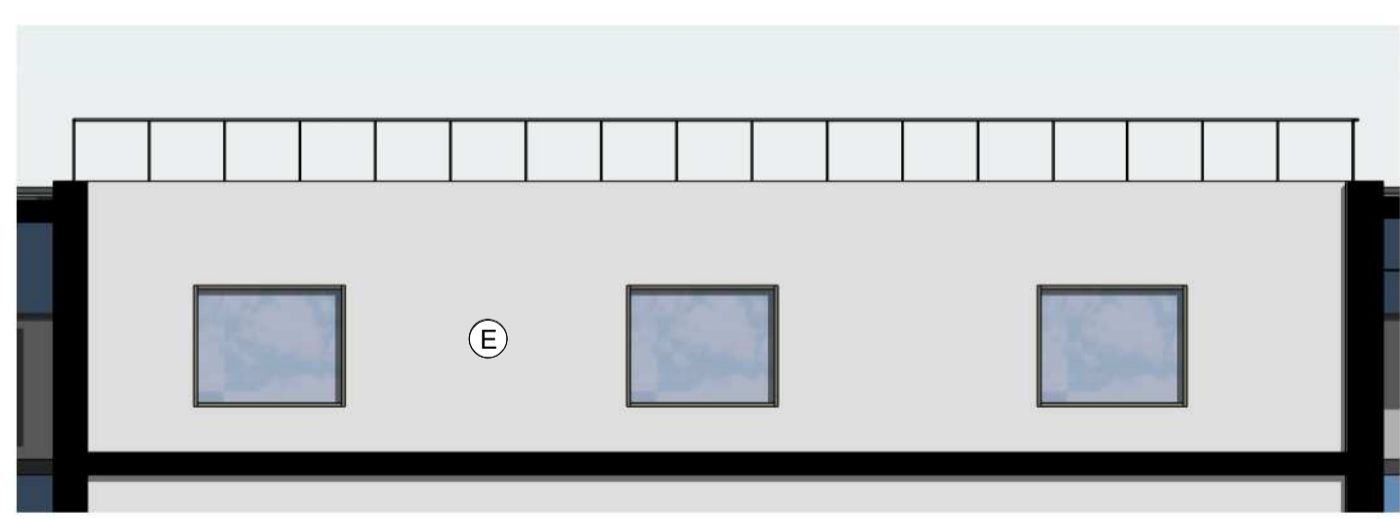
2 South East Elevation - Front of Sports Block
1:100



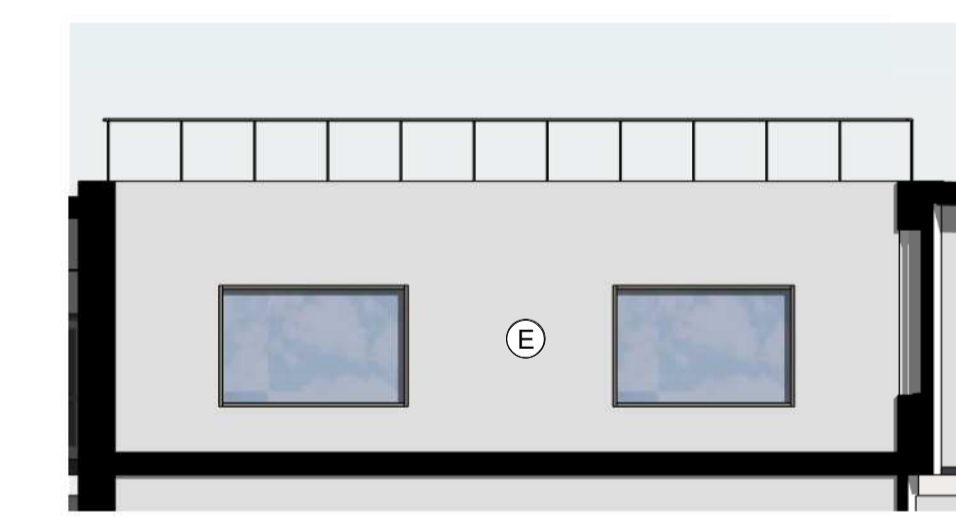
3 Dropped Roof 01 - East Elevation
1:100



4 Dropped Roof 01 - North Elevation
1:100



5 Dropped Roof 01 - South Elevation
1:100



6 Dropped Roof 01 - West Elevation
1:100

LG	CB	09.11.18	Elevations revised to reflect amended solar panel proposals
LG	CB	22.10.18	PLANNING ISSUE
LG	CB	12.10.18	Draft issue for SPM
LG	CB	05.10.18	Elevations revised to suit amended scheme - incorporating planning input
CB	CM	05.07.18	Revised to show landscape CAD
CB	CM	20.04.18	Building model FFL raised to 19.15, spot heights amended
CB	CM	17.04.18	ITT Issue
CB	CM	13.04.18	ITT Draft

AUTHOR	CHECK	DATE	DESCRIPTION	REVISED BY
				LG
				CB

CLIENT: **Bowmer & Kirkland**

ORIGINATOR NO: **151547**

CONSULTANT
STRIDE TREGLOWN
www.stride-treglown.com © Stride Treglown Limited 2016
PROJECT
**Turing House School
Twickenham**

FOR PLANNING

DRAWING TITLE
Proposed GA Elevations - Sheet 2

SUITABILITY STATUS PL : PLANNING	SCALE As indicated @ A1
PROJECT ORIGINATOR ZONE LEVEL TYPE ROLE NUMBER FS0316-STL-ZZ-XX-DR-A-0204	REVISION P08

