

7.0 Proposed Design

- 7.1 Material Strategy and Facade Principles
- 7.2 Floor Plan Schematics
- 7.3 Proposed Elevations
- 7.4 Proposed Sections
- 7.5 Proposed Vertical Bay Study
- 7.6 NHS- Healthcare Facility
- 7.7 Proposed CGIs
- 7.8 Landscape Proposal
- 7.9 Proposed Floor Plans

7.0 Proposed Design

Material Strategy & Facade Principles

The proposed scheme looks at returning the building to its original residential use respecting all of its main historical features and using sympathetic materials that respect the character of the Conservation Area and the surrounding properties.

Through the implementation of classical materials and the use of current construction standards the proposal sees to bring the building up to date with current regulations, permitting the preservation of the Listed Building and the Buildings of Townscape Merit that form part of the site.

The proposal will predominantly be clad in brickwork. Brick has been chosen as it is the leading context material and its tone, colour, texture and variation are the key attributes which have drawn the design team to it as a material. The proposal seeks to pay homage to the sites rich brick heritage.

There are many reasons for proposing a brick skin. The main aspect is its highly contextual relationship to the surrounding streets and period buildings. Brick is also highly sustainable gaining the BRE's A+ rating for sustainability. Brick has a high thermal mass, long life expectancy with low maintenance requirements and is championed by CABE.

Brick's rhythm and proportion have a significant effect on reducing the scale and mass of the proposal by virtue of its implied connection with domestic architecture & the human scale. Bronze coloured panels are proposed at upper floor level and as returning façade elements acting as accent markers alongside the predominate presence of brickwork.

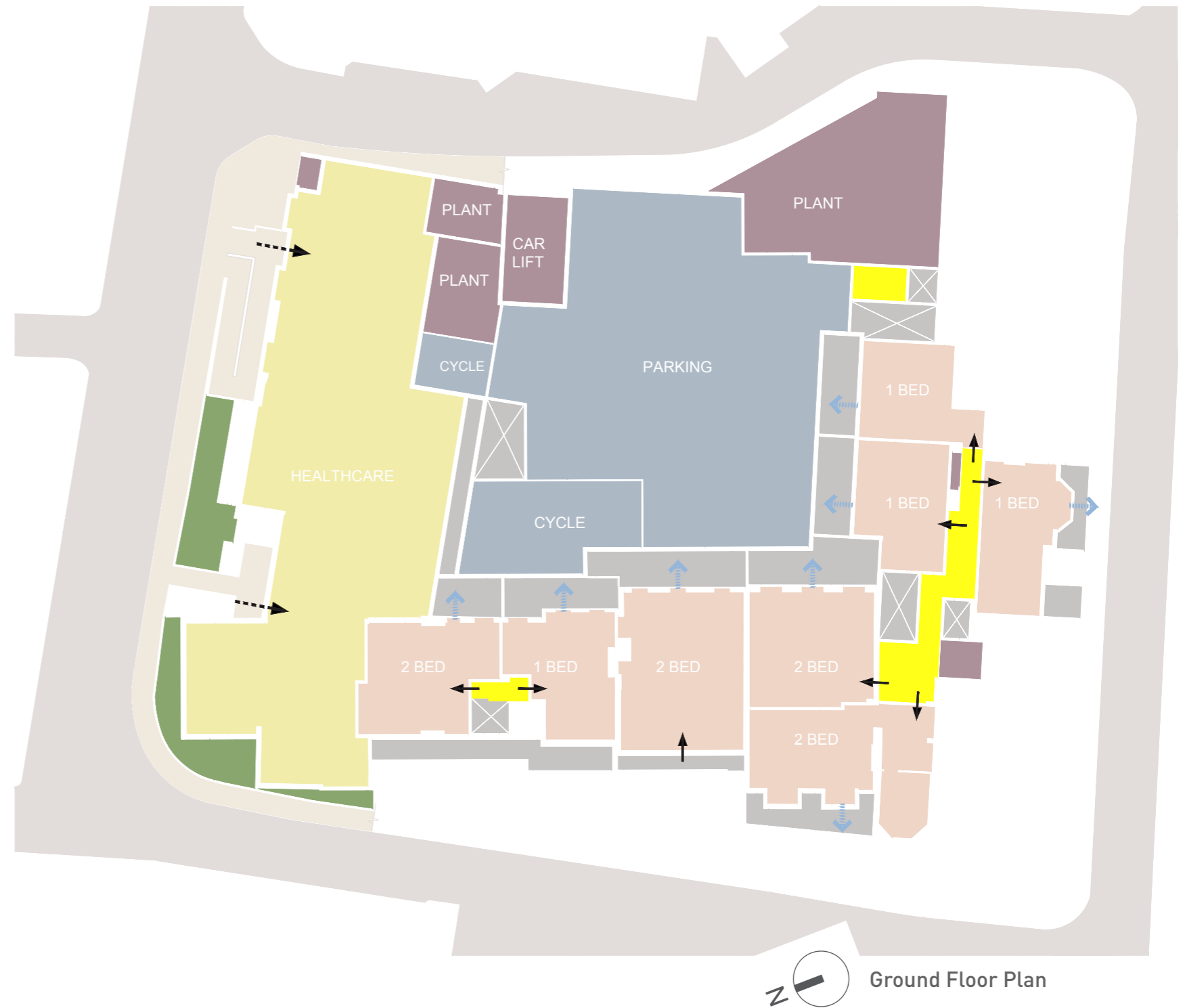
Brickwork recesses within the façade add depth and vigour, allowing the buildings envelope to be perceived as an articulated punched hole proposal as well as being framed out with inset glazing panels.



Proposed Design

Floor Plan Schematics

- Circulation
- Core
- 1, 2 & 3 Bed Apartments (Private Resident)
- 2, 3 & 4 Bed Apartments (Affordable Housing Resident)
- New Healthcare
- Plant / Refuse / Cycles
- Cycles/Parking
- Courtyard
- Principal Aspect of View from Within Apartment
- Communal Access
- Private Access



Ground Floor Plan

Proposed Design

Floor Plan Schematics

- Circulation
- Core
- 1, 2 & 3 Bed Apartments (Private Resident)
- 2, 3 & 4 Bed Apartments (Affordable Housing Resident)
- New Healthcare
- Plant / Refuse / Cycles
- Cycles/Parking
- Courtyard
- Principal Aspect of View from Within Apartment
- Communal Access
- Private Access

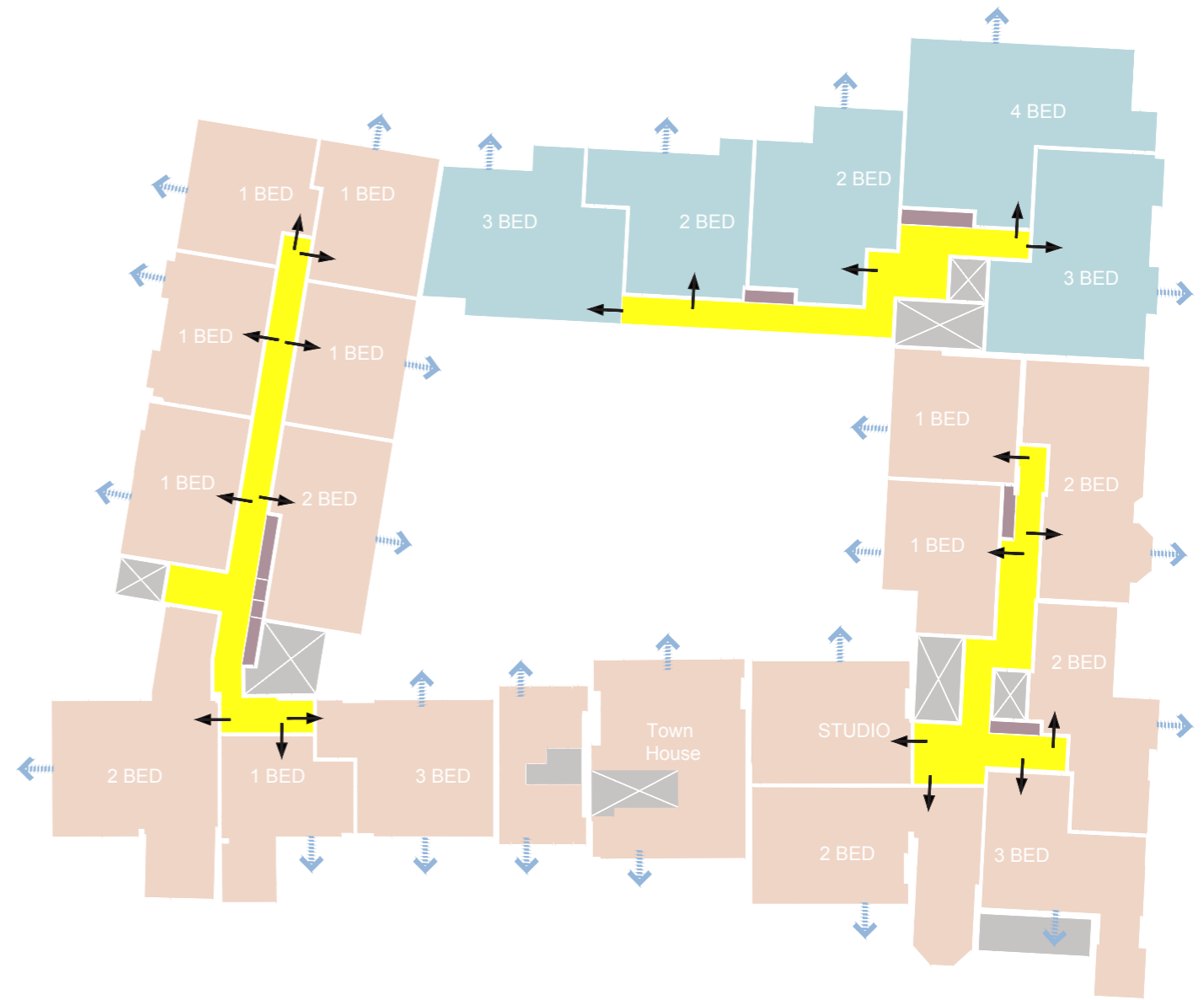


Upper Ground Floor Plan

Proposed Design

Floor Plan Schematics

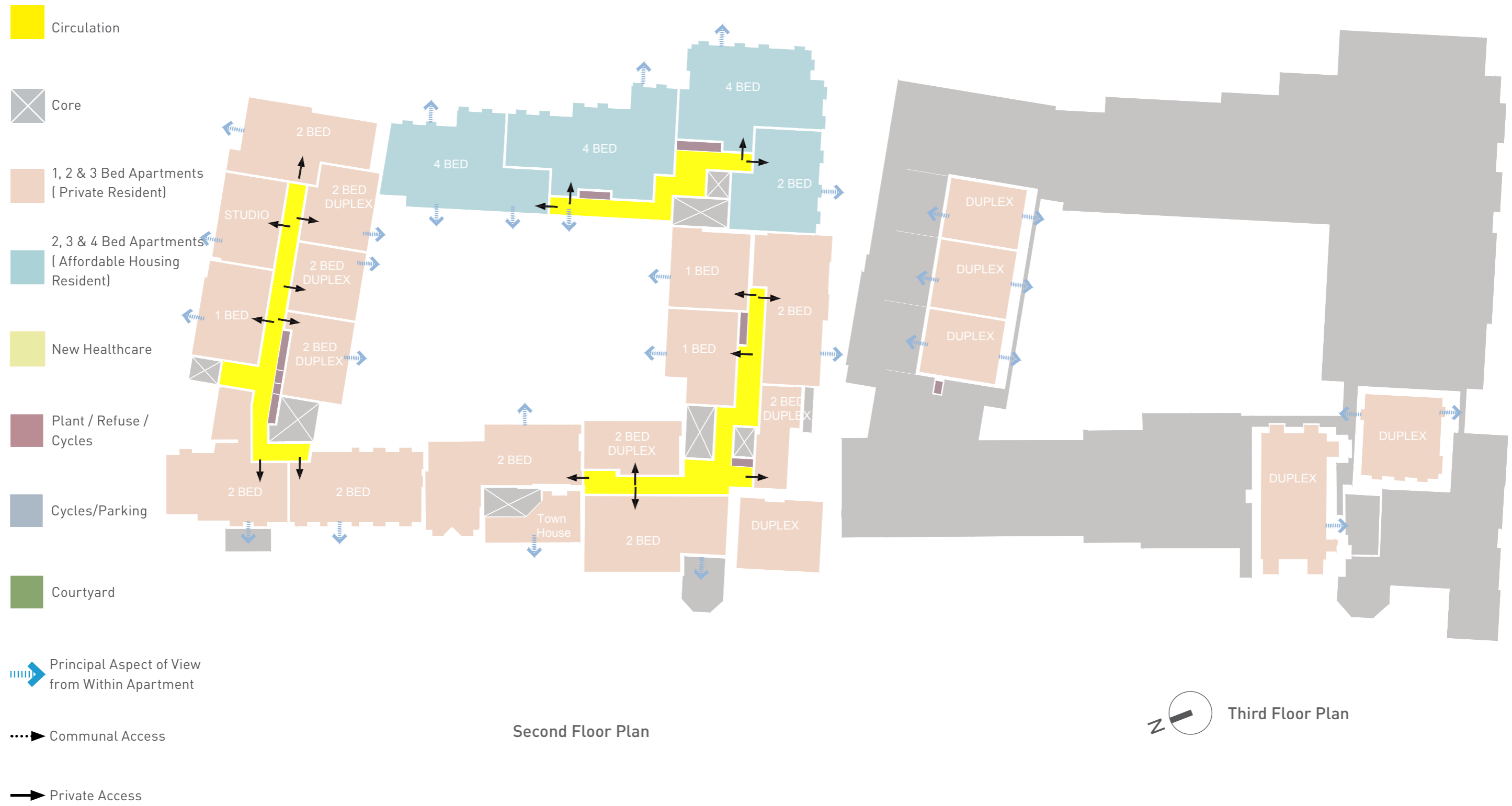
-  Circulation
-  Core
-  1, 2 & 3 Bed Apartments (Private Resident)
-  2, 3 & 4 Bed Apartments (Affordable Housing Resident)
-  New Healthcare
-  Plant / Refuse / Cycles
-  Cycles/Parking
-  Courtyard
-  Principal Aspect of View from Within Apartment
-  Communal Access
-  Private Access



 First Floor Plan

Proposed Design

Floor Plan Schematics



Proposed Design

Proposed North Elevation- Evelyn Road



Proposed West Elevation- Kew Foot Road



Proposed Design

Proposed North Elevation- Evelyn Road



Proposed West Elevation- Kew Foot Road



Proposed Design

Proposed Internal Courtyard Elevation- West



Proposed Internal Courtyard Elevation- North



Proposed Design

Proposed Internal Courtyard Elevation- East

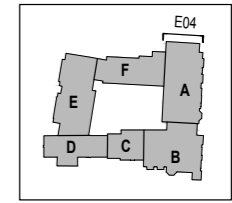


Proposed Internal Courtyard Elevation- South



Proposed Design

Elevation Detail - Building A East Elevation



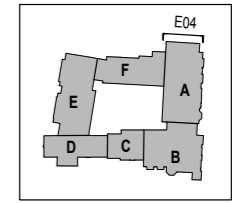
- MATERIALS KEY LEGEND:**
1. Existing retained facade
 2. Existing windows with secondary glazing behind
 3. Existing retained tiled roof
 4. Timber windows/doors to match existing
 5. Timber dormer windows
 6. Slate tiled mansard roof
 7. Replacement of existing rooflight with patent glazing
 8. Roof light
 9. Metal balustrade; black
 10. New brick wall to match existing; Richmond multi-stack
 11. New brick wall to match existing; red
 12. Natural stone band/coping and sill to match existing
 13. Aluminium cladding/ flashing
 14. Aluminium windows
 15. Metal and glass balustrade
 16. Metal louvre/louved door
 17. New brick to window head to match existing; red
 18. Zinc Roof; grey
 19. Lead dormer windows
 20. Composite window-metal external and timber internal
 21. Metal balustrade; grey
 22. Metal door
 23. Pre-cast concrete bridge with metal balustrade
 24. Glazed brick; Pewter (black & grey multi-stack)
 25. Metal gate
 26. Recessed brickwork
 27. Glazed brick; pure white
 28. Glazed brick; off white
 29. Glazed brick; yellow

I Proposed Detailed Elevation E04 – Building A
SCALE: 1:25 (A1)

A Proposed Detailed Section
SCALE: 1:25 (A1)

Proposed Design

Elevation Detail - Building F East Elevation



- MATERIALS KEY LEGEND:**
1. Existing retained facade
 2. Existing windows with secondary glazing behind
 3. Existing retained tiled roof
 4. Timber windows/doors to match existing
 5. Timber dormer windows
 6. Slate tiled mansard roof
 7. Replacement of existing rooflight with patent glazing
 8. Roof light
 9. Metal balustrade; black
 10. New brick wall to match existing; Richmond multi-stack
 11. New brick wall to match existing; red
 12. Natural stone band/coping and sill to match existing
 13. Aluminium cladding/ flashing
 14. Aluminium windows
 15. Metal and glass balustrade
 16. Metal louvre/louved door
 17. New brick to window head to match existing; red
 18. Zinc Roof; grey
 19. Lead dormer windows
 20. Composite window-metal external and timber internal
 21. Metal balustrade; grey
 22. Metal door
 23. Pre-cast concrete bridge with metal balustrade
 24. Glazed brick; Pewter (black & grey multi-stack)
 25. Metal gate
 26. Recessed brickwork
 27. Glazed brick; pure white
 28. Glazed brick; off white
 29. Glazed brick; yellow

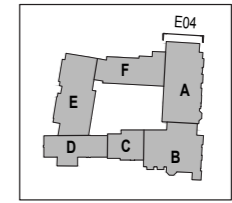
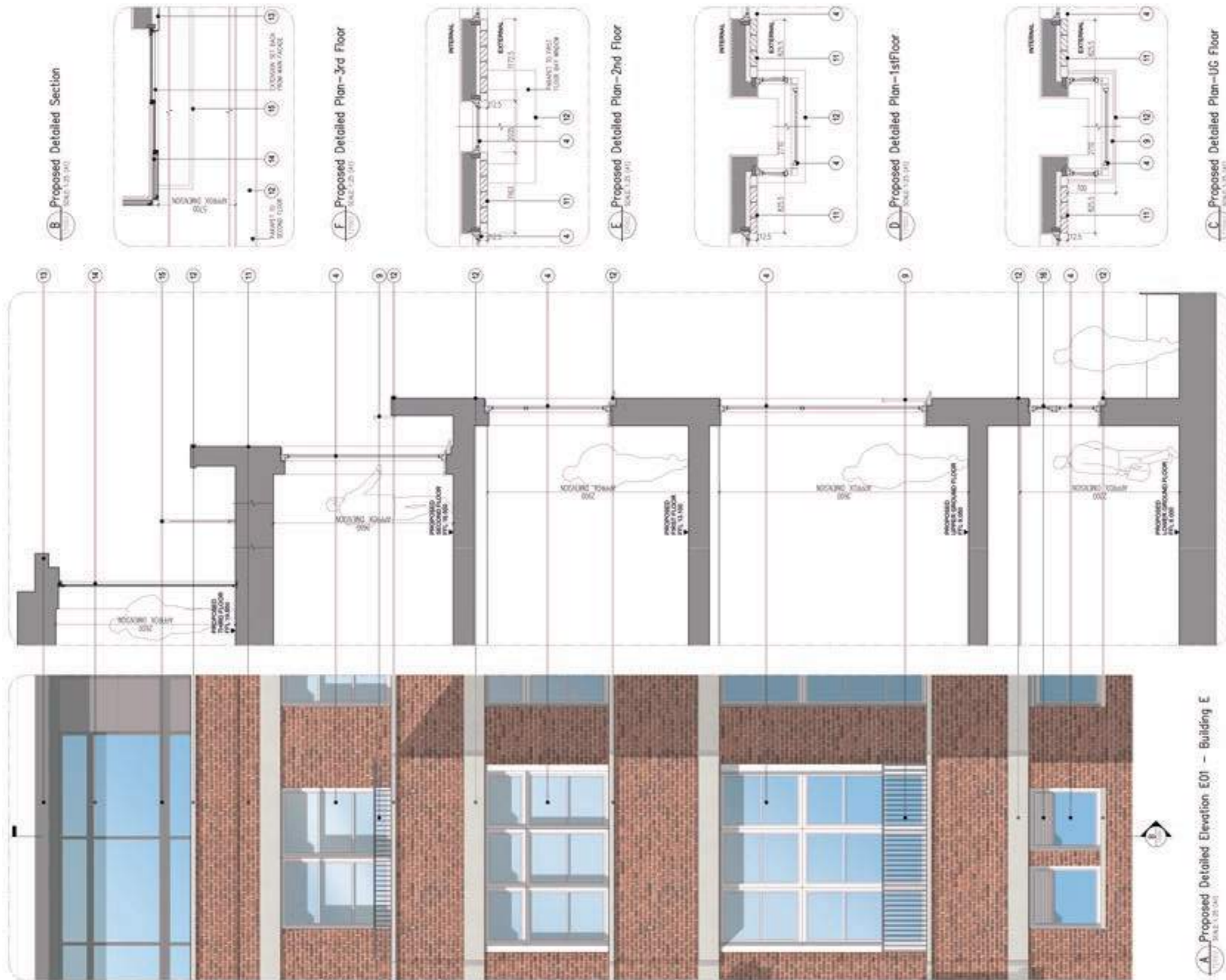
2 Proposed Detailed Elevation E04 - Building F
SCALE: 1:25 (A1)

A Proposed Detailed Section
SCALE: 1:25 (A1)

B Proposed Detailed Plan
SCALE: 1:25 (A1)

Proposed Design

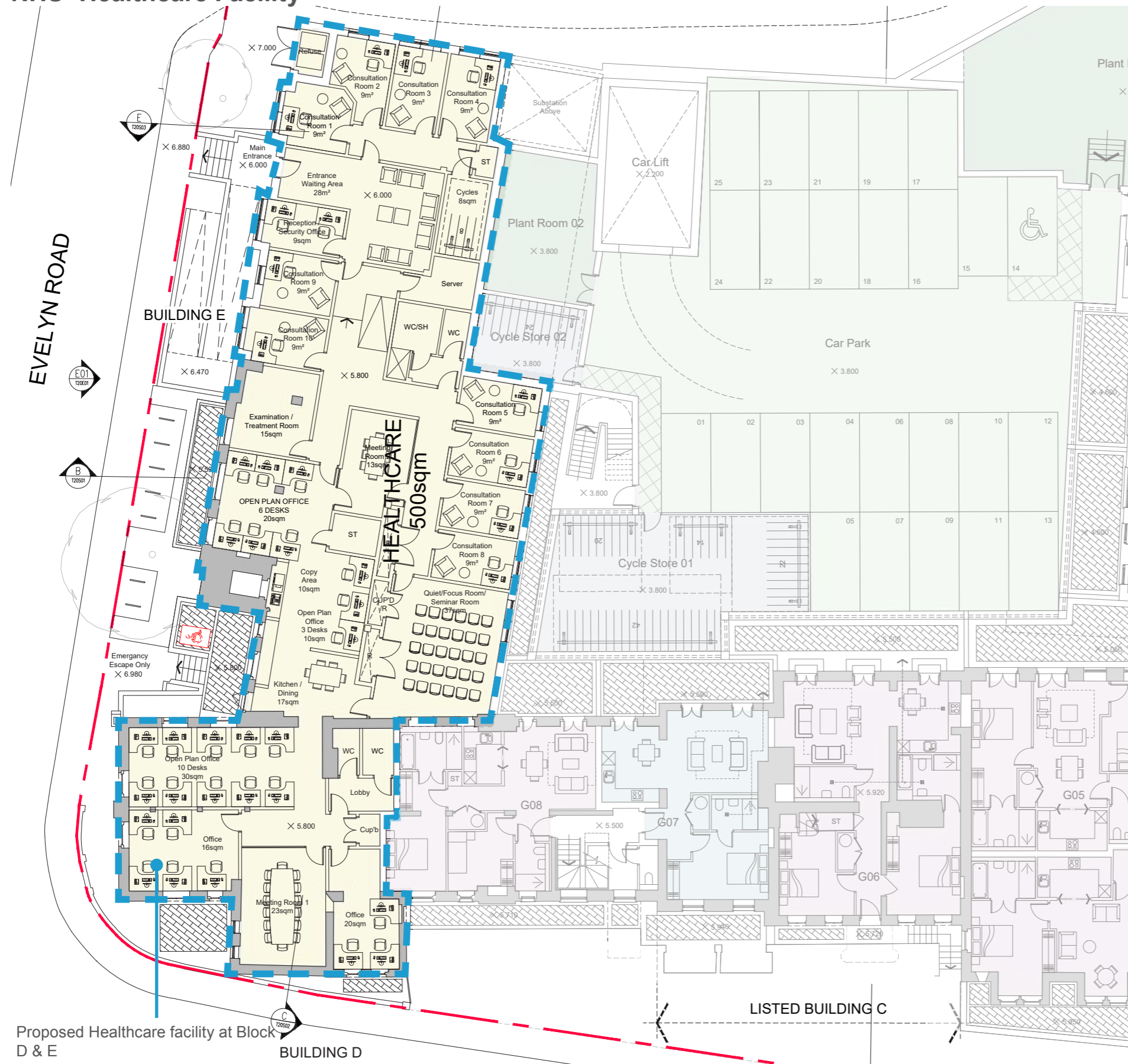
Elevation Detail - Building E North Elevation



- MATERIALS KEY LEGEND:**
1. Existing retained facade
 2. Existing windows with secondary glazing behind
 3. Existing retained tiled roof
 4. Timber windows/doors to match existing
 5. Timber dormer windows
 6. Slate tiled mansard roof
 7. Replacement of existing rooflight with patent glazing
 8. Roof light
 9. Metal balustrade; black
 10. New brick wall to match existing; Richmond multi-stack
 11. New brick wall to match existing; red
 12. Natural stone band/coping and sill to match existing
 13. Aluminium cladding/ flashing
 14. Aluminium windows
 15. Metal and glass balustrade
 16. Metal louvre/louved door
 17. New brick to window head to match existing; red
 18. Zinc Roof; grey
 19. Lead dormer windows
 20. Composite window-metal external and timber internal
 21. Metal balustrade; grey
 22. Metal door
 23. Pre-cast concrete bridge with metal balustrade
 24. Glazed brick; Pewter (black & grey multi-stack)
 25. Metal gate
 26. Recessed brickwork
 27. Glazed brick; pure white
 28. Glazed brick; off white
 29. Glazed brick; yellow

Proposed Design

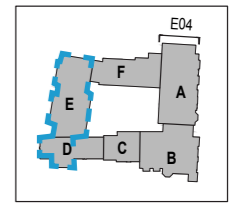
NHS- Healthcare Facility



Proposed Healthcare facility at Block D & E

BUILDING D

LISTED BUILDING C



The NHS Trust are implementing an estate modernization programme (EMP). The programme includes new hospital facilities at Springfield Hospital in Tooting and in Tolworth. They are consolidating their services into purpose built modern facilities.

As part of this programme the trust will occupy 5,000 sqft of new healthcare space on the current site.

The have worked very hard with the trust to develop space plans which are bespoke to their services. The plans include consultation rooms, office suites, meeting rooms, seminar rooms, kitchen and other ancillary facilities.



View of the new hospital at Springfield



View of the new hospital at Tolworth

Proposed Design

Proposed CGI-View from Evelyn Road



Proposed Design

Proposed CGI- View from Shaftesbury Road



Proposed Design

Proposed CGI-View from Kew Foot Road



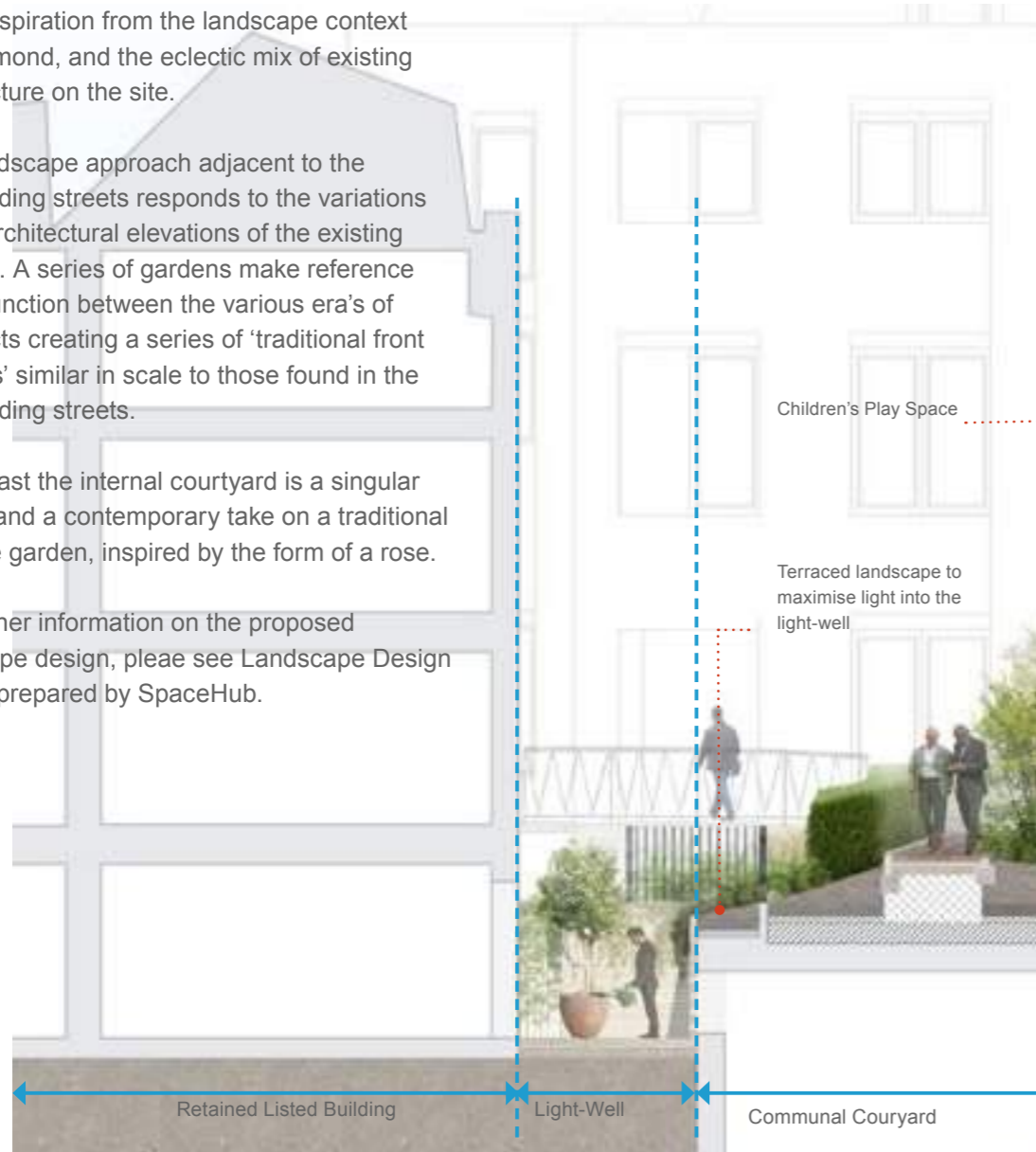
Landscape Proposal

The landscape design for the Richmond Royal takes inspiration from the landscape context of Richmond, and the eclectic mix of existing architecture on the site.

The landscape approach adjacent to the surrounding streets responds to the variations in the architectural elevations of the existing building. A series of gardens make reference to the junction between the various era's of architects creating a series of 'traditional front gardens' similar in scale to those found in the surrounding streets.

In contrast the internal courtyard is a singular space, and a contemporary take on a traditional parterre garden, inspired by the form of a rose.

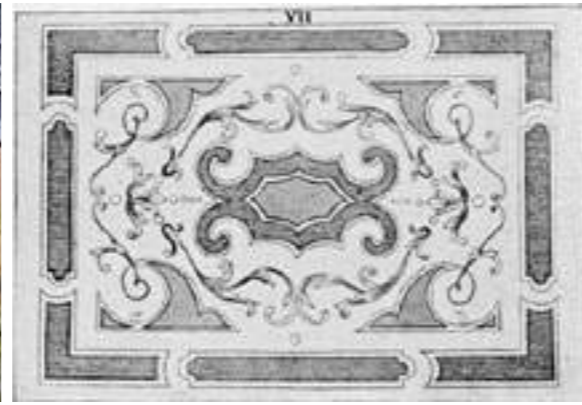
For further information on the proposed landscape design, please see Landscape Design Report prepared by SpaceHub.



- ① Site boundary
- ② Residential shared garden
- ③ 'Front' street garden
- ④ Health centre access
- ⑤ Shared surface, Parking access
- ⑥ Residents' sunken terrace
- ⑦ Residents' terrace
- ⑧ Light-well to health centre
- ⑨ Access to residential shared garden
- ⑩ Shared residents courtyard
- ⑪ Children's play space
- ⑫ Pavement (Public Highway)
- ⑬ Defensible landscape
- ⑭ Platform lift
- ⑮ NHS Cycle stand

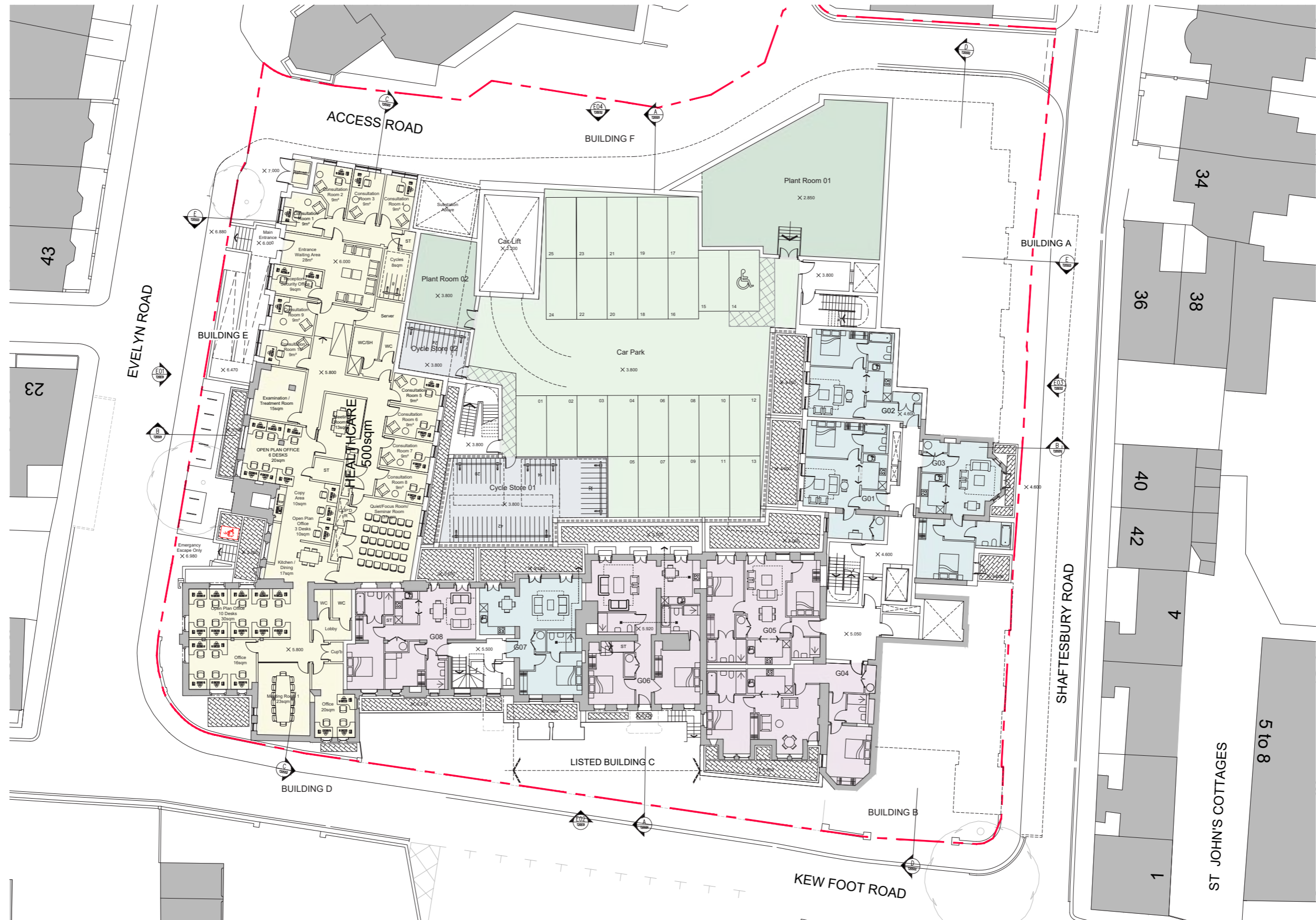
Landscape Proposal

Soft landscape material Palette



Proposed Floor Plans

Lower Ground Floor Plan



Proposed Floor Plans

Upper Ground Floor Plan



Proposed Floor Plans

First Floor Plan



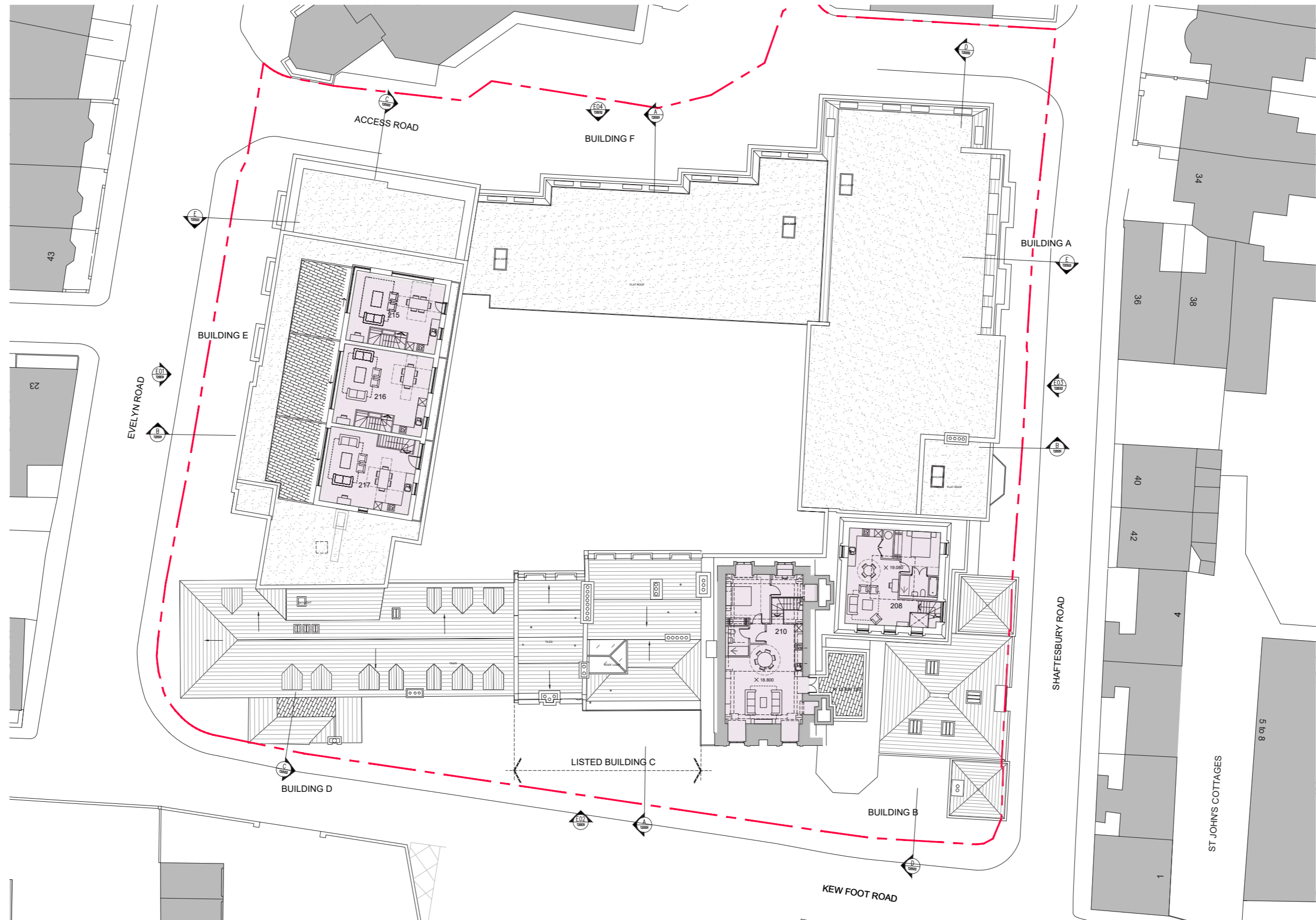
Proposed Floor Plans

Second Floor Plan



Proposed Floor Plans

Third Floor Plan



Proposed Floor Plans

Proposed Roof Plan

